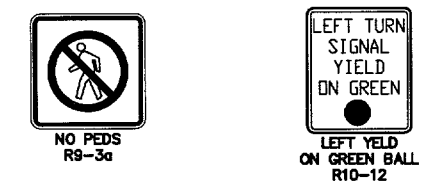


PHASE SEQUENCE
EIGHT PHASE NEMA CONTROLLER

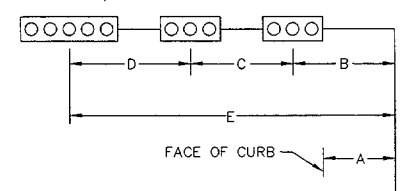
NOTES

- CONTRACTOR TO COORDINATE WITH ELECTRIC COMPANY ON INSTALLATION OF ELECTRICAL SERVICE AND ON RAISING THE POLE HEIGHT AT LEAST FIVE FEET. THE MAST ARM OF POLE T-4 MUST MAINTAIN A FOUR FOOT CLEARANCE TO THE BOTTOM OF THE LOWEST CABLE ON THE POLE.
- CONTRACTOR TO INSTALL AND SET-UP VIDEO DETECTION UNITS ON POLE T-2 FOR THE NORTHBOUND AND WESTBOUND APPROCHES AS WELL AS ON POLE T-4 FOR THE SOUTHBOUND AND EASTBOUND APPROCHES.
- LEFT TURNS Ø1 AND Ø5 ARE PROTECTED/PERMISSIVE PHASING.
- THE CONTRACTOR SHALL PROVIDED AND INSTALL A "DISPLAY PANEL" AS DEFINED IN SPECIAL SPECIFICATION 6887, PART 5.



SIGNAL HEAD & POLE PLACEMENT									
POLE # NUMBER	STATUS	A	B	C	D	E	POLE HEIGHT	FOUNDATION TYPE	LUMINAIRE
T-1	I	10	15	-	-	25	19'	30-A	N
T-2	F & I	17	11	12	-	40	19'	36-A	N
T-3	I	18	12	-	-	30	19'	36-A	N
T-4	F & I	19	12	14	-	45	19'	36-A	N

F - FURNISH; I - INSTALL



12-IN SIGNAL HEADS					
SIGNAL HEADS		BACKPLATES		VEHICLE SIGNAL SECTIONS	PED. SIGNAL SECTIONS
NO.	TYPE	3 SECT.	5 SECT.		
1, 2, 6, 7, 11, 12, 15, 16, 17	V3	9	-	27	-
5, 14	V5	-	2	10	-
3, 4, 9, 10	143C	-	-	-	4
13, 18	152A	-	-	-	2
TOTAL		9	2	37	6

TRAFFIC SIGNAL LAYOUT
MARSH LANE AT
TARGET DRIVEWAY

12700 Park Central Drive, Suite 1800
Dallas, Texas 75251
Tel. No. (972) 770-1300
Fax No. (972) 239-3820

REVISION	DATE	FED. ROAD DIV. No.	STATE AID PROJECT No.	SHEET No.
		6		
DESIGNED BY:	BKS	STATE DIST. No.	COUNTY	
DRAWN BY:	DMR	TEXAS DALLAS	DALLAS	
CHECKED BY:	WK	CONT. SECT.	JOB HIGHWAY	
APPROVED BY:	BKS	---	---	MARSH LN.

C:\IP10\Project\63543006 Addison Signal Design\CAADD\ADDsig.dwg 01/14/2003 10:35 XREF = X1117-TP-TO, XROAD, XROAD_MED, XUTIL, XPAVE, XTRAF