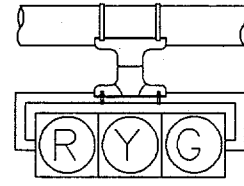
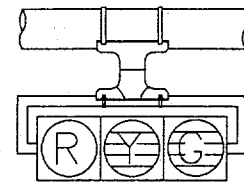


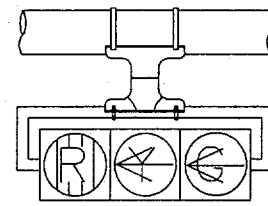
H1TA



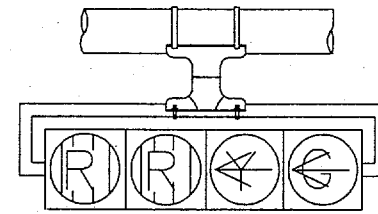
H3



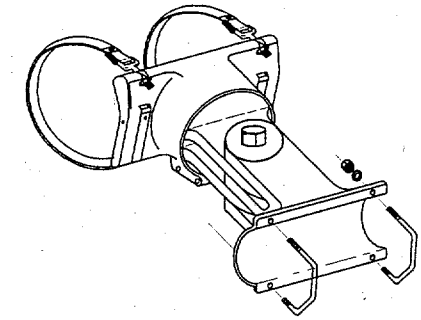
H3L



H3LLT

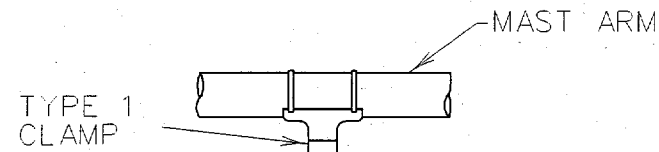


H4LLT

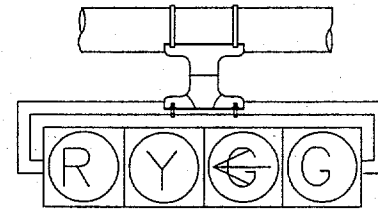


TYPE 2 CLAMP KIT

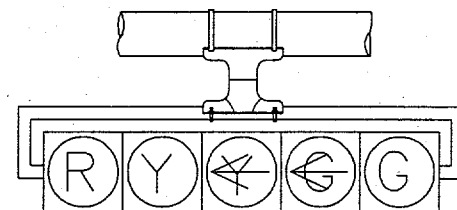
SHALL BE INSTALLED WHEN ROTATION ABOUT THE HORIZONTAL AND VERTICAL AXES ARE NEEDED.



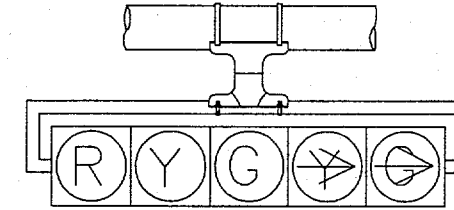
H5LLT



H4LT



H5LT



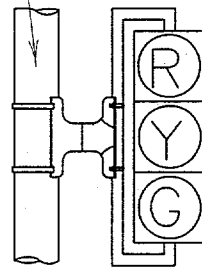
H5RT



TYPE 1 CLAMP

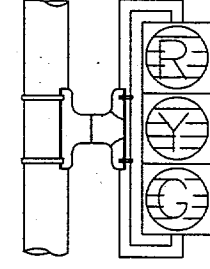
- * ONE (1) CLAMP SHALL BE USED ON SIGNS LESS THAN OR EQUAL TO 10'-0" IN LENGTH.
- * TWO (2) CLAMPS SHALL BE USED ON SIGNS GREATER THAN 10'-0" IN LENGTH.

PEDESTAL OR MAST ARM POLE



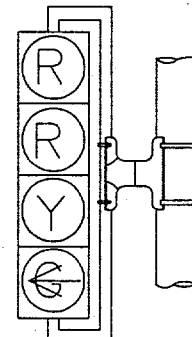
V3

LOUVER INSTALLED WITH BLADES HORIZONTAL

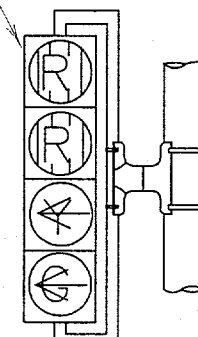


V3L

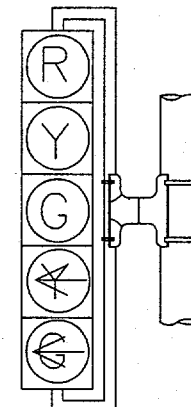
LOUVER INSTALLED WITH BLADES VERTICAL



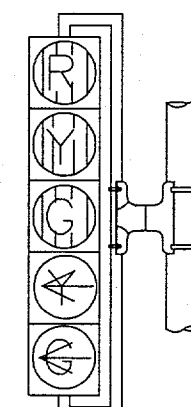
V4LT



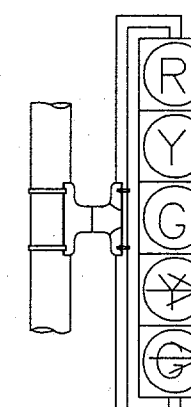
V4LLT



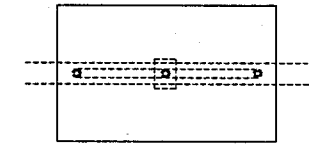
V5LT



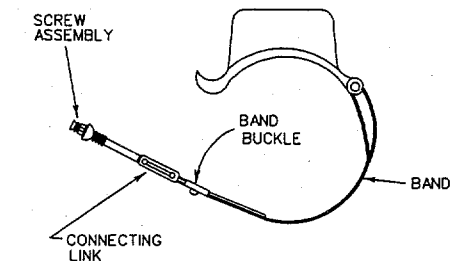
V5LLT



V5RT



SIGN OR DAMPENING DEVICE ATTACHMENT FOR MAST ARMS



NOTES:

1. VEHICLE SIGNAL HEADS SHALL BE MOUNTED WITH TYPE 1 CLAMP AND APPROPRIATE TUBING.
2. ALL POLE MOUNTED VEHICLE HEADS SHALL BE INSTALLED ON THE AWAY-FROM-TRAFFIC SIDE OF THE PEDESTAL OR MAST ARM POLE.
3. ALL DAMPING DEVICES SHALL BE 18" TO 2' WIDE BY 4' IN LENGTH.

* REVISED 3-7-97

TRAFFIC SIGNAL HEAD IDENTIFICATION

DALLAS DISTRICT STANDARD

FED. RD. DIST. NO.	STATE PROJECT NO.	SHEET NO.
6		6
STATE	STATE DIST.	COUNTY
TEXAS	18	COLLIN
COUNT.	SECT.	JOB NO.
		HIGHWAY NO.