

DISCLAIMER  
The use of this standard is governed by the "Texas Engineering Practice Act". No warranty of any kind is made by TxDOT for any purpose whatsoever. TxDOT assumes no responsibility for the conversion of this standard to other formats or for incorrect results or damages resulting from its use.

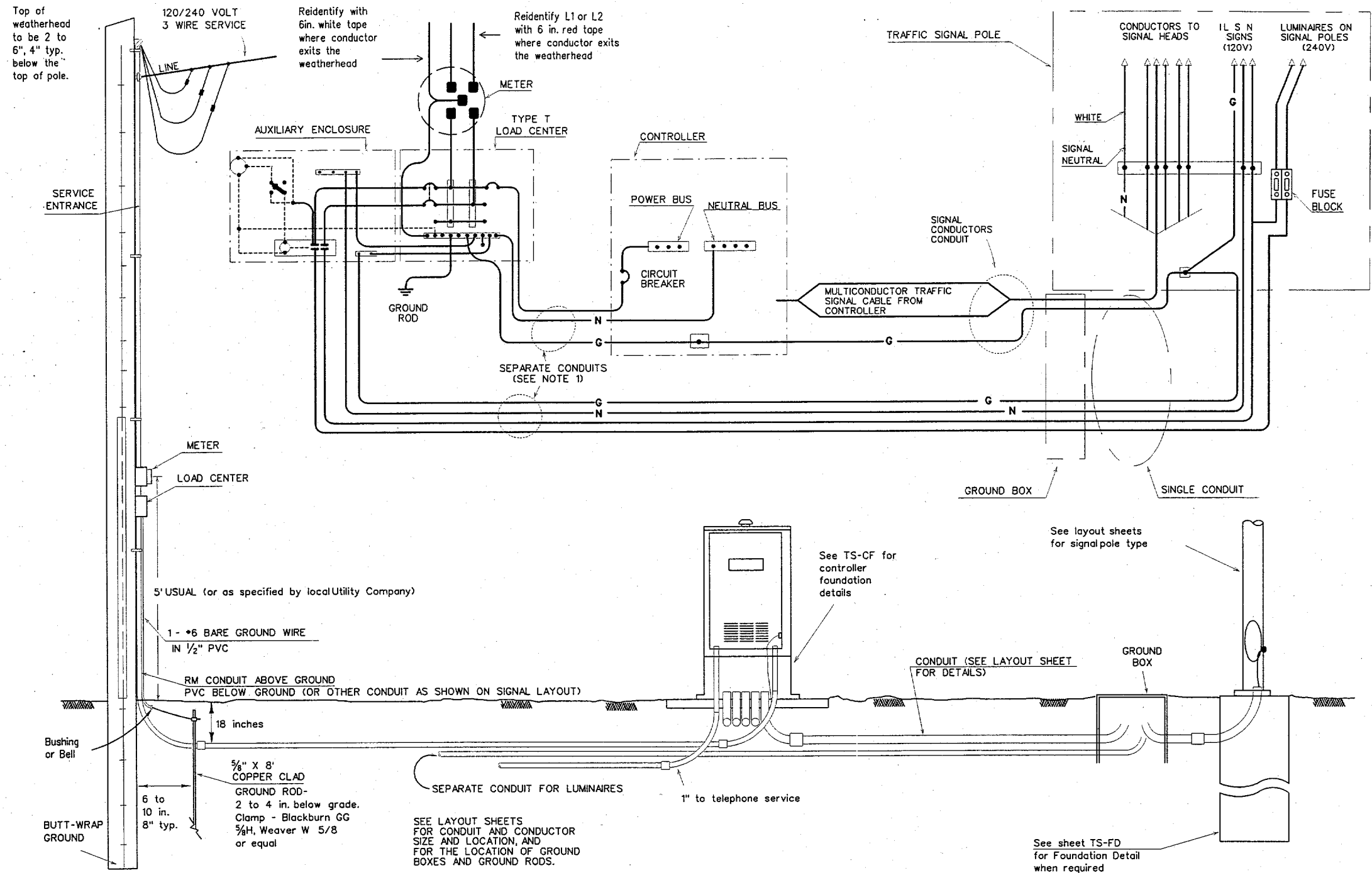
DN:LR  
CK:CW  
DV/DN  
CK:MT

DATE: \_\_\_\_\_  
ACC: d58np1c/usr/d580504  
FILE: \_\_\_\_\_

LEVELS DISPLAYED  
1 2 3 4 5 6 7 8 9 10 11 12 13 14 15  
16 17 18 19 20 21 22 23 24 25 26 27 28 29 30 31 32  
33 34 35 36 37 38 39 40 41 42 43 44 45 46 47 48  
49 50 51 52 53 54 55 56 57 58 59 60 61 62 63

**NOTES:**

- Luminaire conductors shall not be looped through controller cabinet.
- Electrical system to include an equipment grounding conductor noted here as "G". All exposed metal parts are to be bonded to grounding conductor.
- Photocell, when required, shall be mounted at top of pole or in enclosure as shown on ED(4) and ED(5) and as required by descriptive code.
- Roadway lighting fixtures, when required, shall be in accordance with the material and construction methods of the Item, "Roadway Illumination Assemblies" except for the test period for proper operation of the luminaires. Installed roadway lighting luminaires and internally lighted street name signs shall be tested for proper operation as a part of the associated traffic signal system.
- Internally lighted street name signs (ILSN), when required, shall be in accordance with the Item "Internally Lighted Street Name Signs". Because of the electrical isolation of ILSN hinges, a #12 green grounding conductor shall be run to the ILSN fixture.
- Install ground rod at alternate location when directed by the Engineer. Maintain a minimum of 8 ft in contact with the earth.
- Liquidtight flexible metal conduit, may be used when meter and service enclosure are mounted 90 to 180 degrees to each other. LFMC shall not exceed 3 ft. and shall be securely supported within one ft. of each end. Each end of LFMC must have a grounding bushing or be terminated with a grounding fitting. A neutral conductor must be installed within the LFMC. Bend in liquidtight flexible metal conduit shall not exceed 180 degrees.
- Minimum embedment depth as per item 627 Treated Timber Poles.
- Pole to be set plumb.
- Back fill thoroughly tamped in 6 in. lifts. Place 6 inches additional backfill above grade around pole base to allow for settling, as per item 627.
- Excess pole length shall be trimmed from the top at a slope to aid water run off.
- Gain pole two places for each meter, service, separate or auxiliary enclosure. See ED(4) for details.
- All illumination and power conductors to be pull tested and megged. Do not meg traffic signal cable.
- Enclosures are to be locked, and ground box covers are to be bolted before power is applied to the circuit.
- Conduits entering top of enclosures to be fitted with conduit sealing hub or threaded boss, such as meter hub. Off-set nipple, when required, shall not be zinc-die-pressure cast. All metal conduits not connected to conduit sealing hub, or threaded boss must have a grounding bushing. Terminate bonding jumper to ground bus. All conduits entering enclosures shall be sealed. Silicone shall not be allowed.



**ELECTRICAL SERVICE**

(TYPE T TIMBER POLE SHOWN AS EXAMPLE, SEE ELECTRICAL DETAILS, LAYOUT SHEETS, AND ELECTRICAL SERVICE DATA SHEET FOR SERVICE REQUIRED AND FOR DETAILS.)

Unless shown elsewhere in the plans, electrical service data for Types D and T shall be as follows.

ELECTRICAL SERVICE DESCRIPTION(SEE ED(4))	SERVICE CONDUIT SIZE (RMC)	SERVICE CONDUCTORS NO./SIZE	SAFETY SWITCH AMPS	MAIN DISCONNECT CKT. BRK. POLE/AMP	TWO-POLE CONTACTOR AMPS ***	PANELBD./LOADCENTER AMP RATING (MIN)	CIRCUIT NO.	BRANCH CKT. BRK. POLE/AMPS	KVA LOAD
TY D (120/240)070(NS)GS(E)**(*)	1/2	3/*4	N/A	2P/70	30	70	T.S. Lighting	1P/50 2P/15	<7.1
TY T (120/240)000(NS)GS(E)**(*)	1/2	3/*4	N/A	None	30	70	T.S. Lighting	1P/50 2P/15	<7.1

\*\*\* Eliminate photocell, contactor and separate enclosure if lighting, or internally lighted signs are not required by plans.  
\*\* See descriptive code in estimate for service support type.  
\* See descriptive code in estimate for overhead or underground service.

**SIGNAL CONTROLLER**

**SIGNAL POLE**

STANDARD PLANS  
TEXAS DEPARTMENT OF TRANSPORTATION  
Traffic Operations Division

**ELECTRICAL DETAILS-TYPICAL TRAFFIC SIGNAL SYSTEM DETAILS**

ED(7)-00

© TxDOT January 1992	REV: KB	CR: JW	EW: DN	CK: GC	NEG NO.
REVISIONS	STATE DISTRICT	FEDERAL REGION	FEDERAL AID PROJECT	SHEET	
5-93				16	
10-93					
4-98					
12-00					