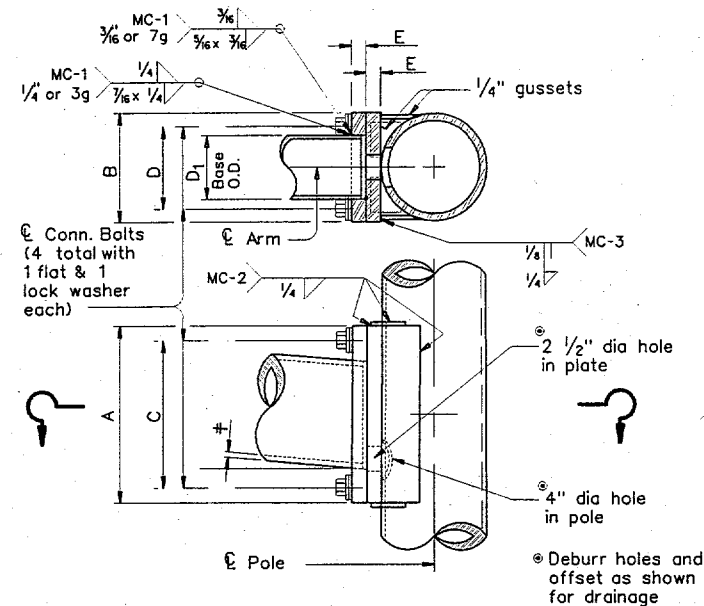


DISCLAIMER: The use of this standard is governed by the "Texas Engineering Practice Act". No warranty of any kind is made by TxDOT for any purpose whatsoever. TxDOT assumes no responsibility for the conversion of this standard to other formats or for incorrect results or damages resulting from its use.

LEVELS DISPLAYED
 1 2 3 4 5 6 7 8 9 10 11 12 13 14 15 16
 ACC: d48hplq/usr/d482517
 7 18 19 20 21 22 23 24 25 26 27 28 29 30 31 32
 33 34 35 36 37 38 39 40 41 42 43 44 45 46 47 48
 49 50 51 52 53 54 55 56 57 58 59 60
 L V.1.2 for English 1.3 for Metric

ARM SIZE		A	B	C	D	E	CONN BOLT DIA
D ₁	±	in.	in.	in.	in.	in.	in.
6.5	.179	12	9	9	6	1	1
7.5	.179	13	9	10	6	1	1
8.0	.179	14	10	11	7	1 1/4	1 1/4
9.0	.179	16	11	13	8	1 1/4	1 1/4
9.5	.179	17	12	14	9	1 1/4	1 1/4
9.5	.239	18	12	15	9	1 1/4	1 1/4
10.0	.239	18	12	15	9	1 1/4	1 1/4
10.5	.239	18	13	15	10	1 1/2	1 1/2
11.0	.239	18	13	15	10	1 1/2	1 1/2

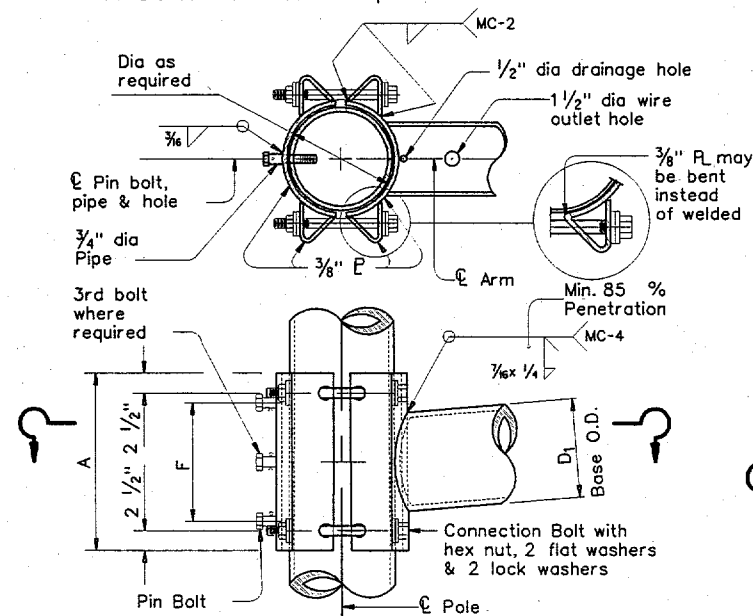
ARM SIZE		A	B	C	D	E	CONN BOLT DIA
D ₁	±	in.	in.	in.	in.	in.	in.
7.0	.179	11	11	8	8	1 1/4	1 1/4
7.5	.179	11	11	8	8	1 1/4	1 1/4
8.0	.179	11	11	8	8	1 1/4	1 1/4
9.0	.179	13	13	10	10	1 1/4	1 1/4
10.0	.179	13	13	10	10	1 1/4	1 1/4
9.5	.239	13	13	10	10	1 1/4	1 1/4
10.0	.239	14	14	11	11	1 1/2	1 1/2
11.0	.239	14	14	11	11	1 1/2	1 1/2
11.5	.239	14	14	11	11	1 1/2	1 1/2



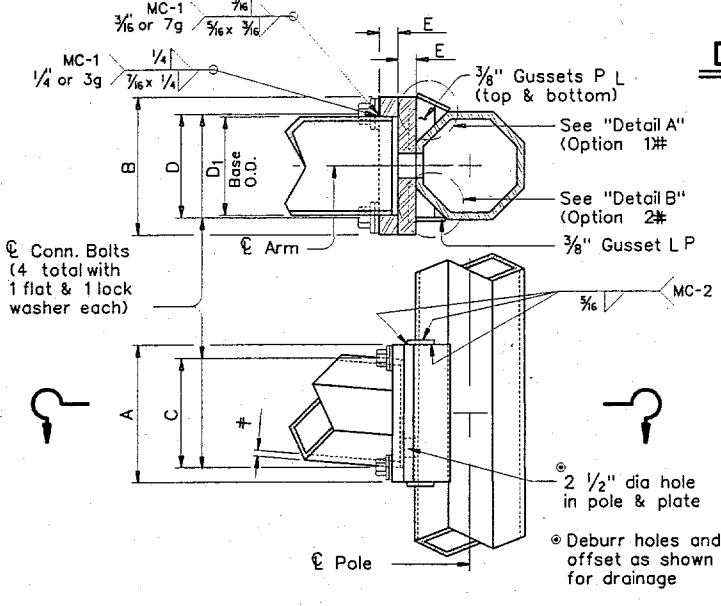
FIXED MOUNT DETAIL 1

ARM SIZE		A	F	CONN. BOLTS		PIN BOLTS	
D ₁	±	in.	in.	No.	Dia	No.	Dia
6.5	.179	12	8	4	* 7/8	2	5/8
7.5	.179	14	8	4	1	2	5/8
8.0	.179	14	8	4	1	2	5/8
9.0	.179	16	10	4	1	2	5/8
9.5	.179	18	12	4	1 1/4	3	5/8
9.5	.239	18	12	4	1 1/4	3	5/8
10.0	.239	18	12	4	1 1/4	3	5/8

*1" Dia connection bolts are permissible

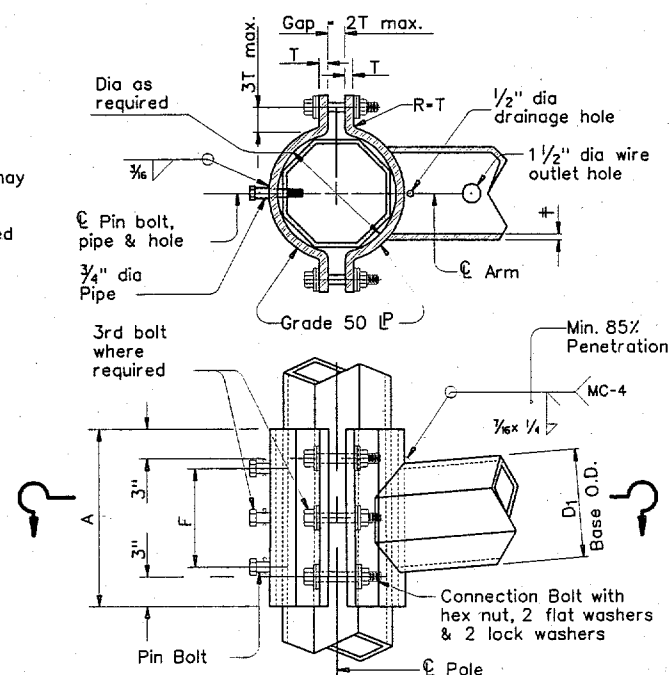


CLAMP-ON DETAIL 1

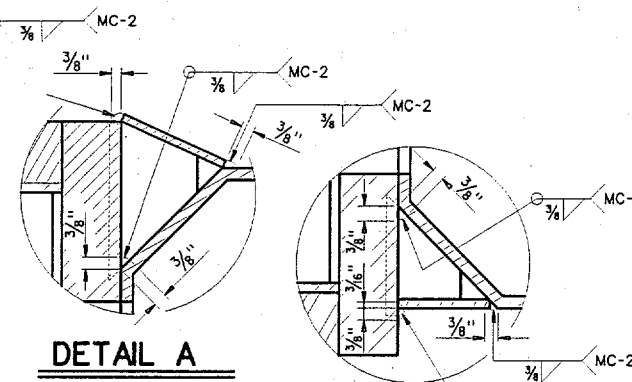


FIXED MOUNT DETAIL 2

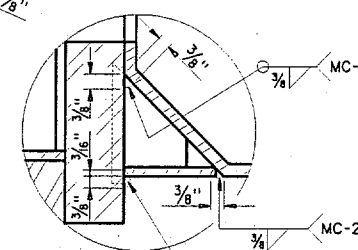
ARM SIZE		A	F	T	CONN. BOLTS		PIN BOLTS	
D ₁	±	in.	in.	in.	No.	Dia	No.	Dia
7.0	.179	12	8	3/4	4	3/4	2	5/8
7.5	.179	14	8	3/4	4	3/4	2	5/8
8.0	.179	14	8	3/4	4	3/4	2	5/8
9.0	.179	16	10	7/8	4	1	2	5/8
10.0	.179	18	10	7/8	4	1	2	5/8
9.5	.239	18	10	1	6	1	3	5/8
10.0	.239	18	10	1	6	1	3	5/8



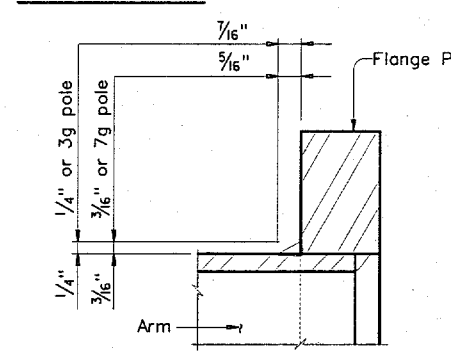
CLAMP-ON DETAIL 2



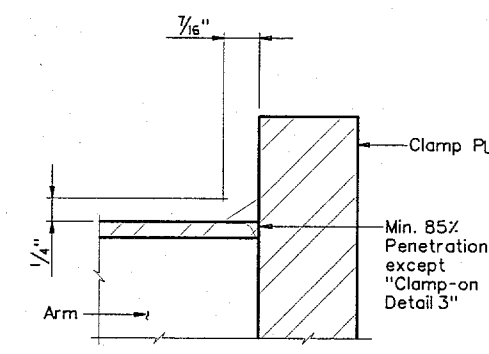
DETAIL A



DETAIL B



FIXED MOUNT ARM



CLAMP-ON ARM

ARM BASE WELD DETAILS

GENERAL NOTES:

Clamp-on details are used for the second arm on dualmast arm assemblies. A Maximum 1 1/2" wide vertical slotted hole may be cut in the front clamp plate to facilitate drainage during galvanizing. The slot shall be centered behind the arm and shall be no longer than the arm diameter minus 1"

Fixed mount details are used for single mast arm assemblies and for the first arm on dualmast arm assemblies.

Where duplicate parts occur on a detail, welds shown for one part shall apply to all similar parts on the detail.

Pin bolts are required to prevent rotation of clamp-on arms under design wind forces.

NOTE:

Pin bolts shall be A325 with threads excluded from the shear plane. Pin bolt and 3/4" dia pipe shall have 3/16" dia holes for a 1/8" dia galvanized cotter pin. Back clamp plate shall be furnished with a 3/4" dia hole for each pin bolt. An 1/16" dia hole for each pin bolt shall be field drilled through the pole after arm orientations have been approved by the Engineer.

Texas Department of Transportation
 Traffic Operations Division

**STANDARD ASSEMBLY
 FOR TRAFFIC SIGNAL
 SUPPORT STRUCTURES
 MAST ARM CONNECTIONS**

MA-C-96

FILE: MA-C.DGN	DATE: MS	CHK: JSY	DR: MMF	CR: JSY
© TxDOT August 1995	DIST: 6	FED. REG.:	FEDERAL AID PROJECT:	SHEET: 22
REVISIONS:	6	COUNTY:	CONTROL SECT:	JOB:
5-96				HIGHWAY: