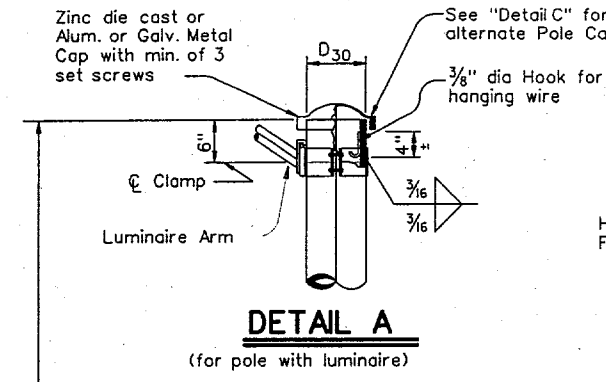
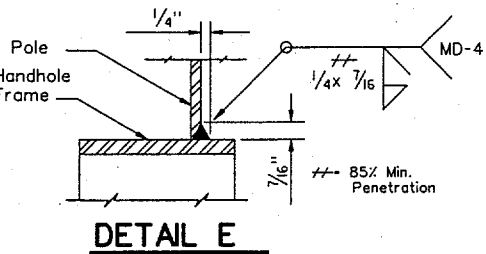


DISCLAIMER
The use of this standard is governed by the "Texas Engineering Practice Act". No warranty of any kind is made by TxDOT for any purpose whatsoever. TxDOT assumes no responsibility for the conversion of this standard to other formats or for incorrect results or damages resulting from its use.

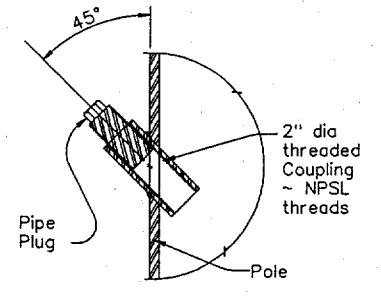
LEVELS DISPLAYED
1 2 3 4 5 6 7 8 9 10 11 12 13 14 15 16 ACC
7 8 9 10 11 12 13 14 15 16 17 18 19 20 21 22 23 24 25 26 27 28 29 30 31 32
33 34 35 36 37 38 39 40 41 42 43 44 45 46 47 48
49 50 51 52 53 54 55 56 57 58 59 60 61 62 63



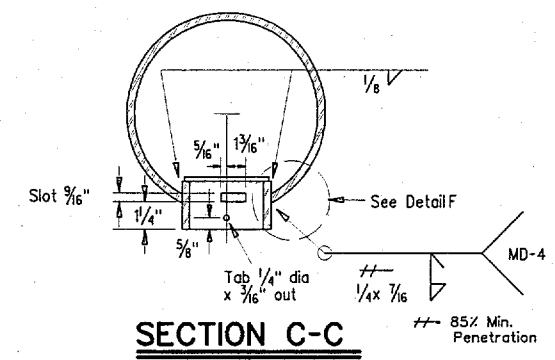
DETAIL A
(for pole with luminaire)



DETAIL E

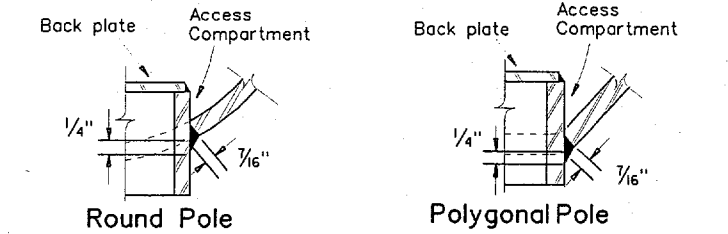


COUPLING DETAIL

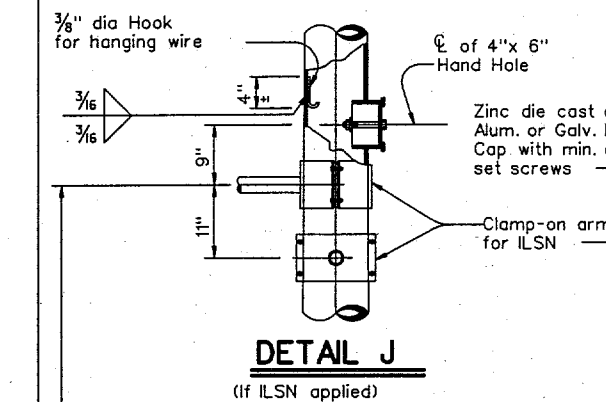


SECTION C-C

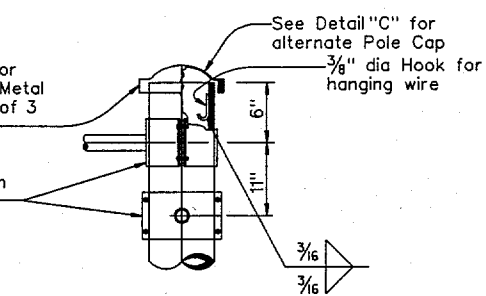
Opening for access compartment shall be no more than 1/16 inch wider than the access compartment itself.



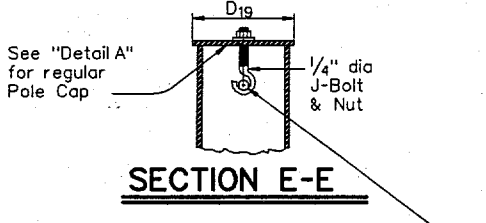
DETAIL F



DETAIL J
(if ILSN applied)



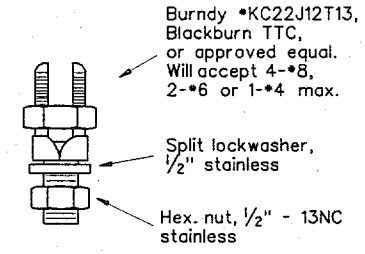
DETAIL K
(for 24\"/>



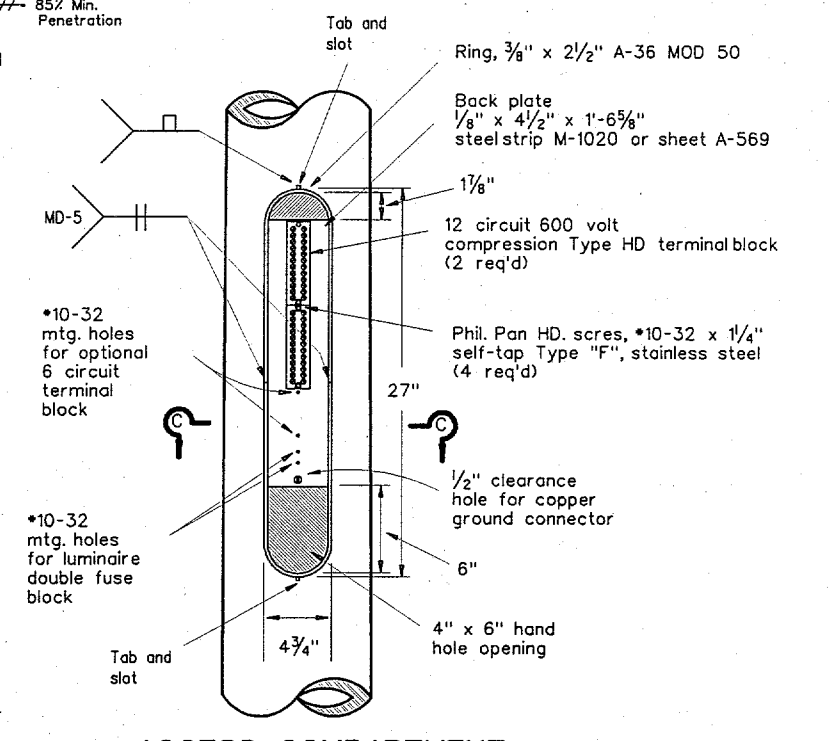
SECTION E-E

DOUBLE FUSE BLOCK

For luminaire fuses Littelfuse *L60030M-2SQ or equal, supplied and installed by field contractor when required.

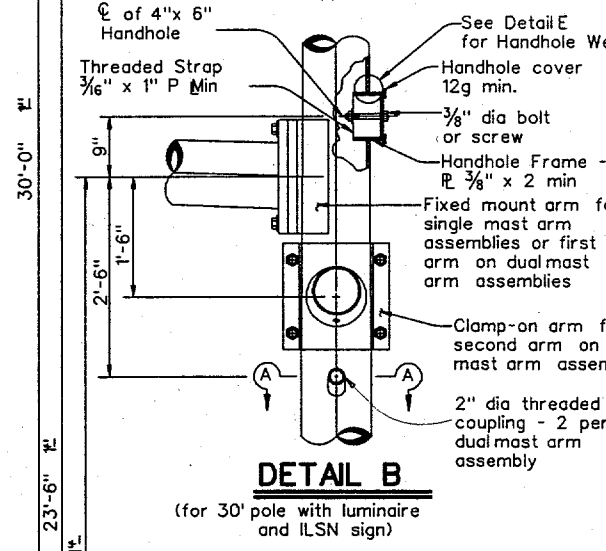


COPPER GROUND CONNECTOR

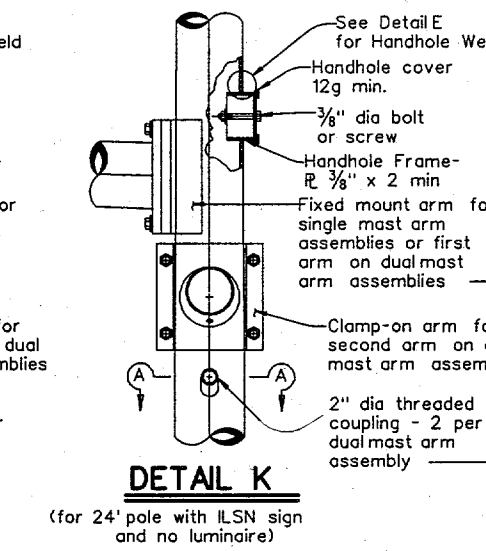


ACCESS COMPARTMENT

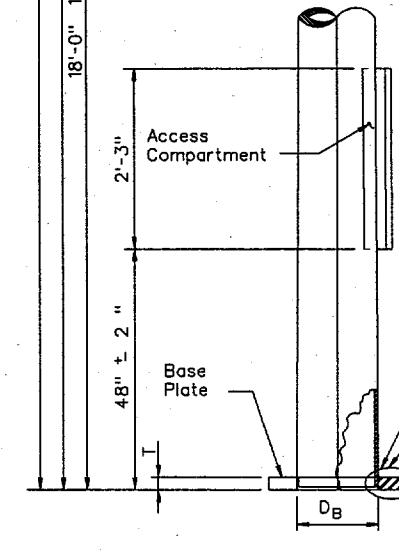
- The cover shall be one piece formed from ABS plastic, shall be a pearl gray color, and shall be suitable for exposure to harsh sunlight and extreme weather. Cover shall latch with two screw latches and shall fit tightly to the enclosure ring to create a rainproof seal. Latch screws shall be 1/4-20 stainless flat socket head screws with tamper proof feature.
- The pole manufacturer shall provide with each pole a separate kit consisting of: one cover with two latching assemblies, two terminal strips (Marathon *985GP12CU or approved equal), four *10-32 x 1/4" self tapping type "F" stainless steel pan head screws, and one ground connector (Blackburn TTC, Burndy KC22J12T13, or Ilco SSS-5). The traffic signal contractor shall install the kit items in the field.
- The screw hole spacing on the enclosure back plate shall be for two Marathon *985GP12 terminal strips, one Marathon *985GP06CU terminal strip, and one Littelfuse *L60030M-2SQ fuse block. Arrangement of the items shall be as shown in the Access Compartment detail.



DETAIL B
(for 30\"/>

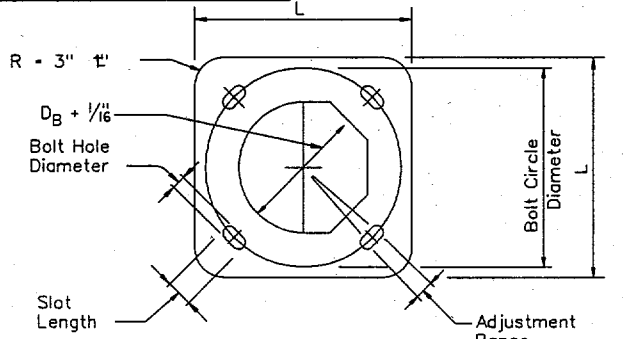


DETAIL C
(for 19\"/>

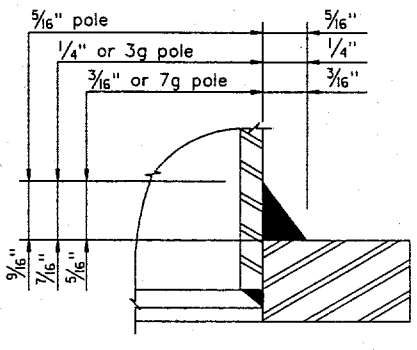


POLE ELEVATION

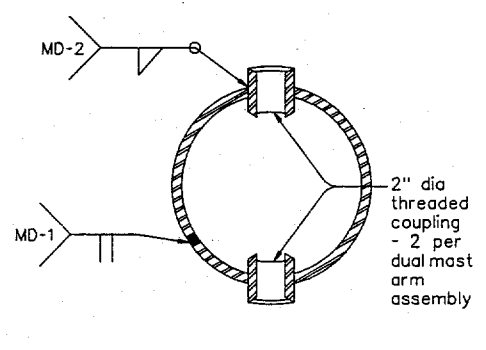
| Anchor Bolt Diameter | Bolt Hole Diameter | Slot Length | Bolt Circle Diameter | Base Pl. Dim. L x T | Adjust. Range |
|----------------------|--------------------|-------------|----------------------|---------------------|---------------|
| 1 1/2" | 1 3/4" | 3 1/2" | 17" | 18" x 1 1/2" | 13.4° |
| 1 3/4" | 2" | 4" | 19" | 20" x 1 3/4" | 13.5° |
| 2" | 2 1/4" | 4 1/2" | 21" | 22" x 2" | 13.6° |
| 2 1/4" | 2 1/2" | 5" | 23" | 24" x 2 1/4" | 13.7° |



BASE PLATE PLAN



DETAIL D



SECTION A-A

MOD. ACCESS COMPARTMENT MT. HEIGHT

STANDARD PLANS
Texas Department of Transportation
Traffic Operations Division

TRAFFIC SIGNAL SUPPORT STRUCTURES MAST ARM POLE DETAILS
MA-D-00 (DAL)

| | | | | | |
|-----------|------|---------|---------|-------|---------|
| REVISIONS | DATE | BY | CHK'D | APP'D | SHEET |
| 7-96 | 10 | MS | JSY | FDN | 23 |
| 8-99 | | | | | |
| 10-00 | | | | | |
| COUNTY | | CONTROL | SECTION | JOB | HIGHWAY |
| COLLIN | | | | | |