

STATION EQUATION
 N 11312.1886, E 10114.597
 MATCH LINE STA. 15+00 BK. =
 MATCH LINE STA. 15+01.32 FWD.

MATCH LINE STA. 15+01.32 FWD.
 MATCH LINE STA. 15+00 BK. =

MATCH LINE STA. 20+00

- NOTES:**
- CONTRACTOR TO PROTECT INLETS ALONG MARSH LANE.
 - COORDINATES ARE PROJECT SPECIFIC AND NOT STATE PLANE RELATED.
 - CONTRACTOR SHALL FURNISH & INSTALL NEW METER BOXES FOR EACH WATER SERVICE IN THE RIGHT-OF-WAY. EXISTING METER BOXES SHALL BE REMOVED AND WATER SERVICE LINE CONNECTED. EXISTING METER SHALL BE THE PROPERTY OF THE TOWN. ALL CONNECTIONS IN NEW METER BOX SHALL BE BY THE CONTRACTOR.
 - METER BOXES REMOVAL FROM SIDEWALK. CONTRACTOR SHALL REMOVE FULL SLAB OF SIDEWALK AND REPLACE WITH 4 INCH REINFORCED CONCRETE SIDEWALK.
 - METER BOXES REMOVED FROM PAVEMENT SECTIONS SHALL BE REPLACED WITH THE PAVEMENT REPLACEMENT SECTIONS SHOWN ON SHEET B. SIZE OF PATCH SHALL BE MIN. 2 FT. BY 2 FT. AND MAXIMUM OF 3 FT. BY 3 FT. SAW CUT EXISTING PAVEMENT.

WARNING
 S.W. BELL BURIED TELEPHONE CABLE CALL ENTERPRISE 9800 72 HOURS PRIOR TO EXCAVATION IN VICINITY OF STA. 16+26 & STA. 16+63

WATER SERVICES	
LOCATION	PROP. 2" SERVICE (L.F.)
STA. 15+78.64 RT.	18.0

FURNISH & INSTALL: PROP. 2" OUTLET, 2" TYPE K COPPER, METER BOX AND DOUBLE CHECK VALVE ASSEMBLY. CONNECT TO EXISTING WATER LINE AT EACH WATER SERVICE LOCATION. TOWN TO FURNISH WATER METER.

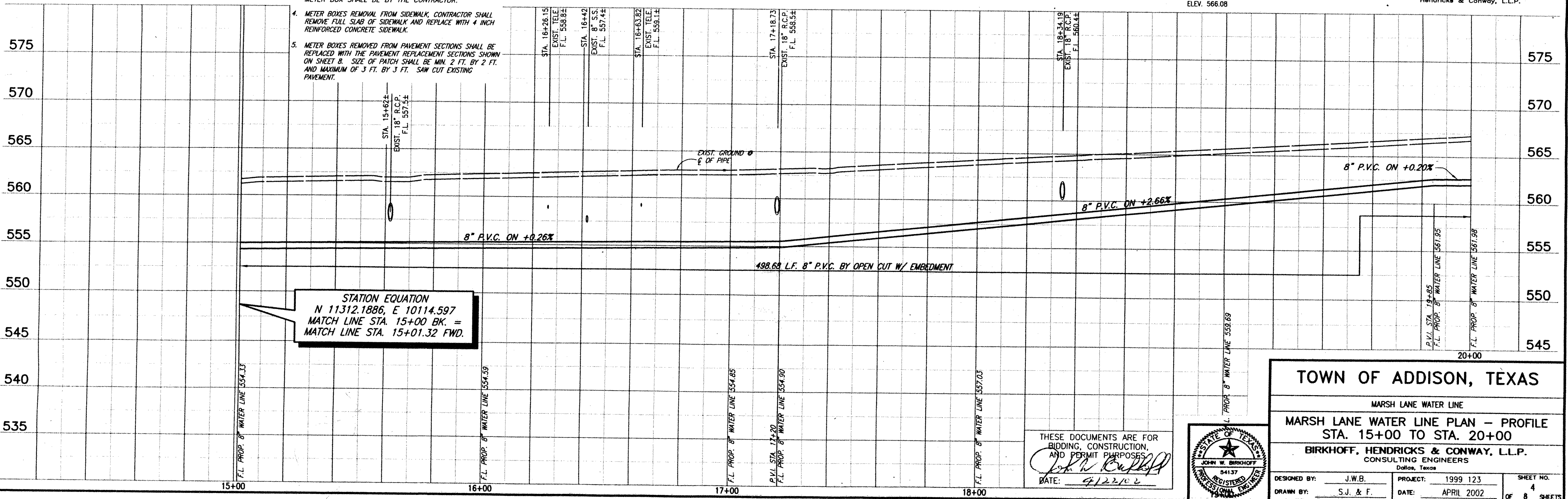
CONTRACTOR TO FIELD VERIFY LOCATION OF EXISTING UTILITIES MIN. 48 HOURS PRIOR TO START OF CONSTRUCTION.

SURVEY CONTROL POINTS

CP 1161 PK NAIL SET	N 11437.5911 E 10170.6581
CP 1162 PK NAIL SET	N 11676.7098 E 10054.0723

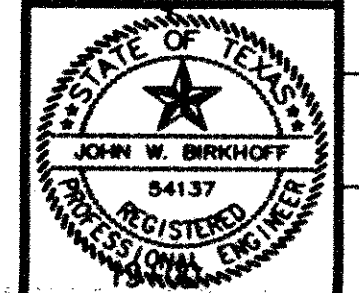
BENCHMARK: T.B.M. 27
 "□" CENTER OF INLET LOCATED APPROX. 60' EAST OF NE INTERSECTION OF MARSH LN. & BROOKHAVEN CLUB DRIVE ELEV. 546.91
 T.B.M. ML-1
 "□" CENTER OF INLET LOCATED APPROX. 530' SOUTH OF INTERSECTION OF MARSH LN. & SPRING VALLEY RD. ELEV. 566.08

These plans and related specifications were prepared for construction of this specific project only. Reuse of these documents is not permitted without written authorization of Birkhoff, Hendricks & Conway, L.L.P.



STATION EQUATION
 N 11312.1886, E 10114.597
 MATCH LINE STA. 15+00 BK. =
 MATCH LINE STA. 15+01.32 FWD.

THESE DOCUMENTS ARE FOR BIDDING, CONSTRUCTION, AND PERMIT PURPOSES.
 John W. Birkhoff
 DATE: 4/22/02



TOWN OF ADDISON, TEXAS

MARSH LANE WATER LINE

MARSH LANE WATER LINE PLAN - PROFILE
 STA. 15+00 TO STA. 20+00

BIRKHOFF, HENDRICKS & CONWAY, L.L.P.
 CONSULTING ENGINEERS
 Dallas, Texas

DESIGNED BY: J.W.B.	PROJECT: 1999 123	SHEET NO. 4
DRAWN BY: S.J. & F.	DATE: APRIL 2002	OF 8 SHEETS

REVISION 04/17/02 R.L.
 99123MWD.DWG
 SCALE: 1"=20'
 BLOCKS: PROP. W