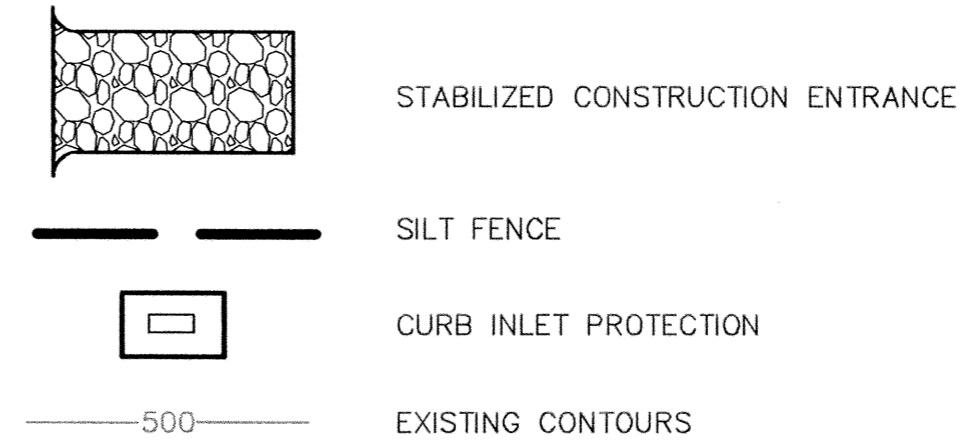
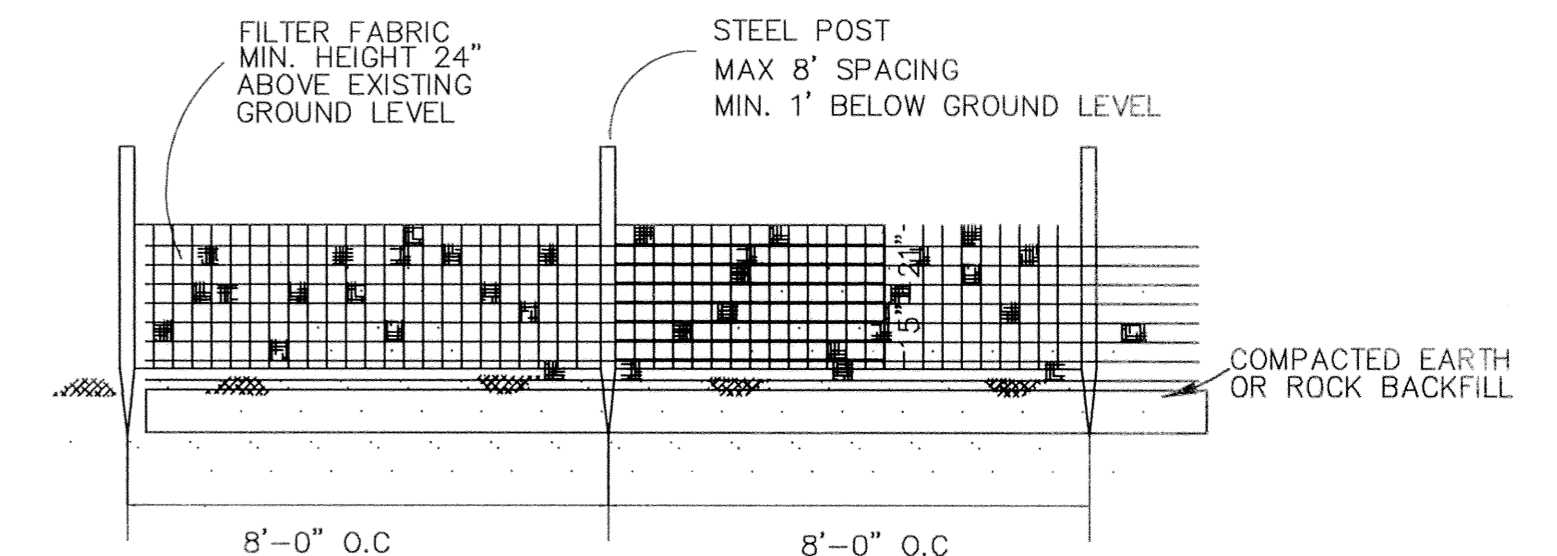
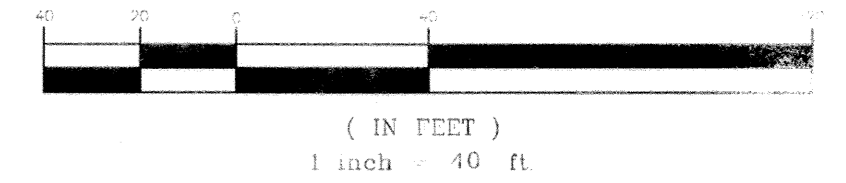


LEGEND

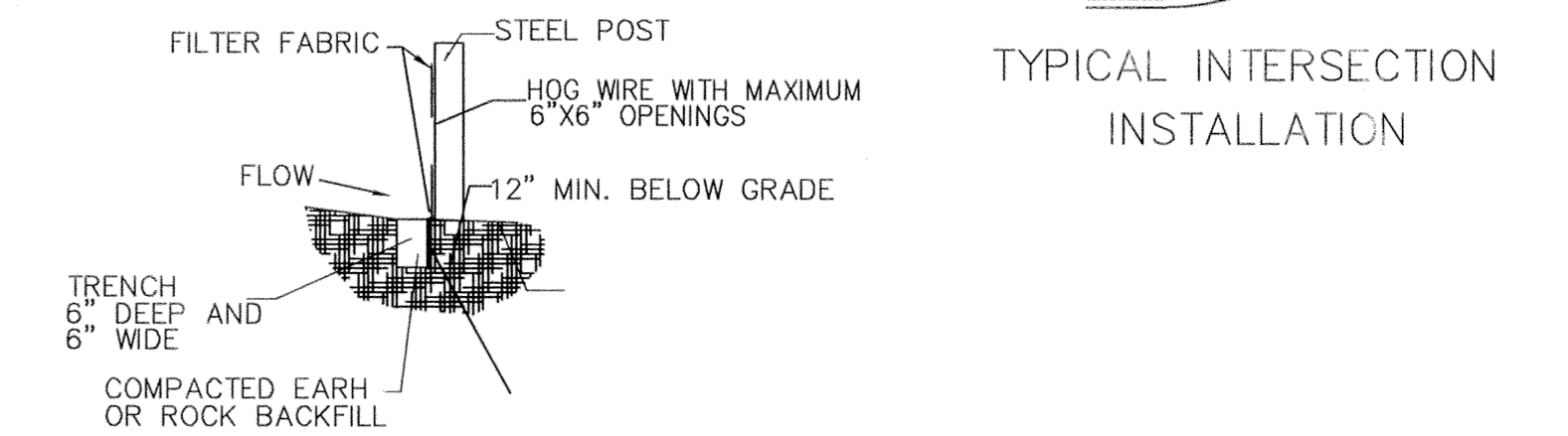


GRAPHIC SCALE

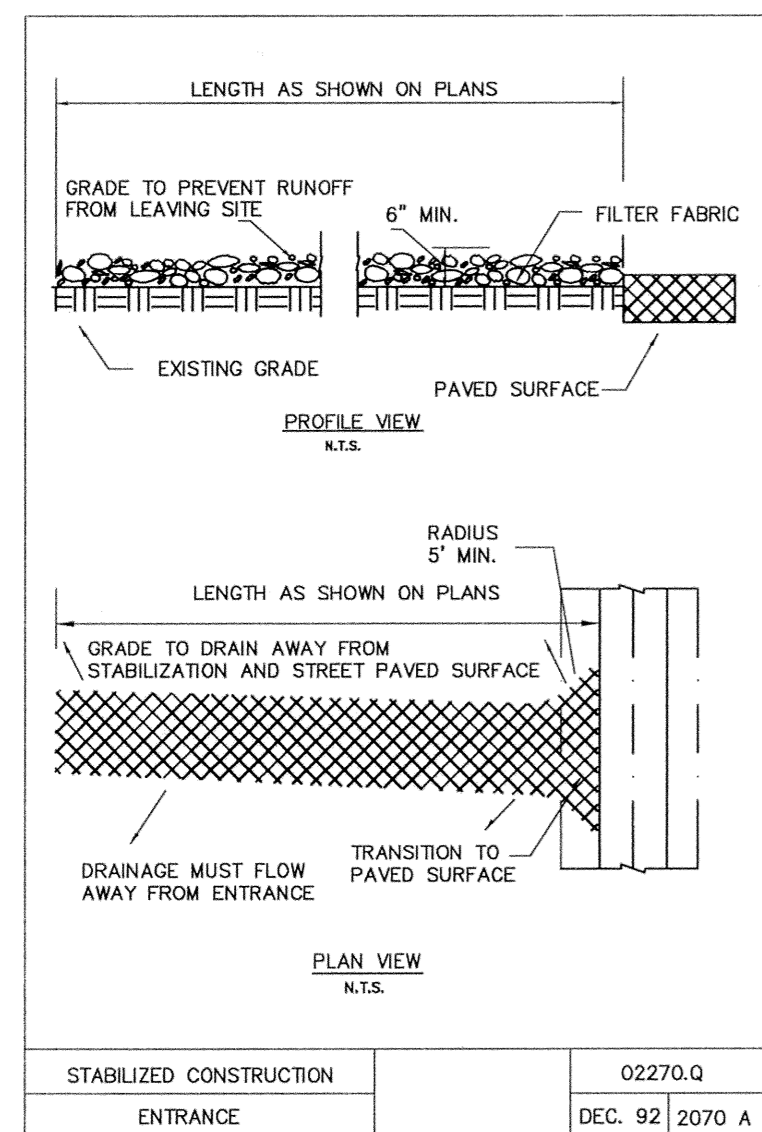


SILT FENCE FOR EROSION CONTROL

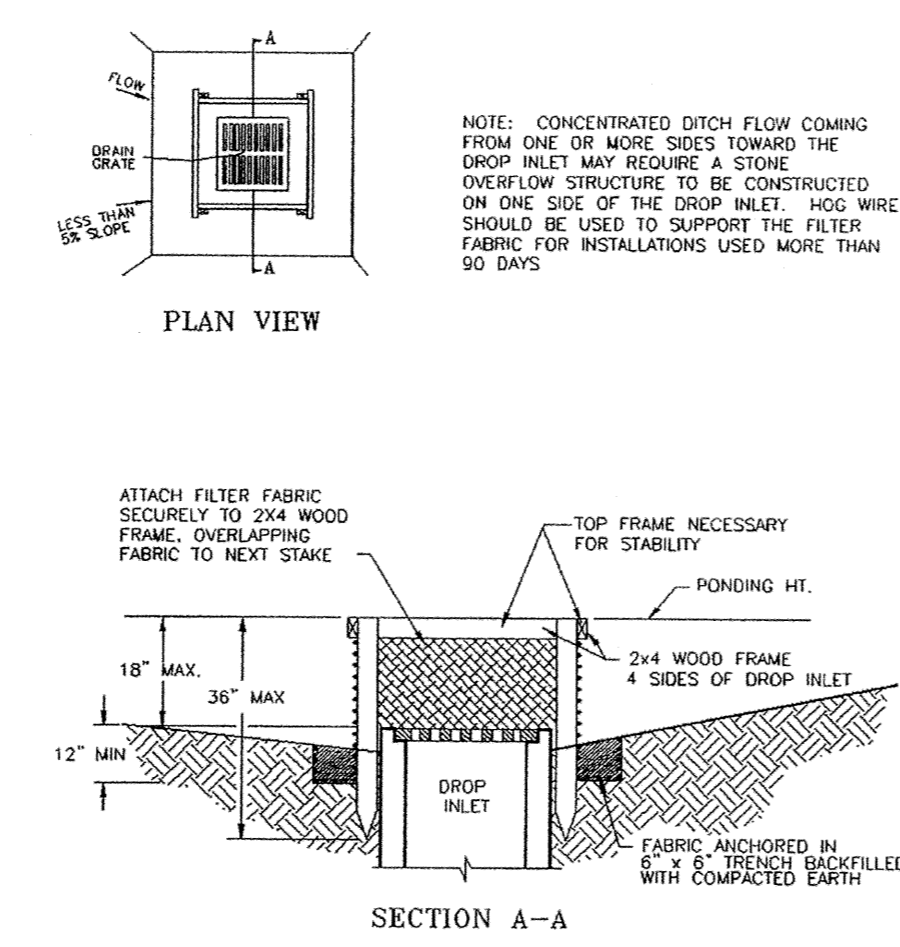
SECTION VIEW



TYPICAL INTERSECTION INSTALLATION

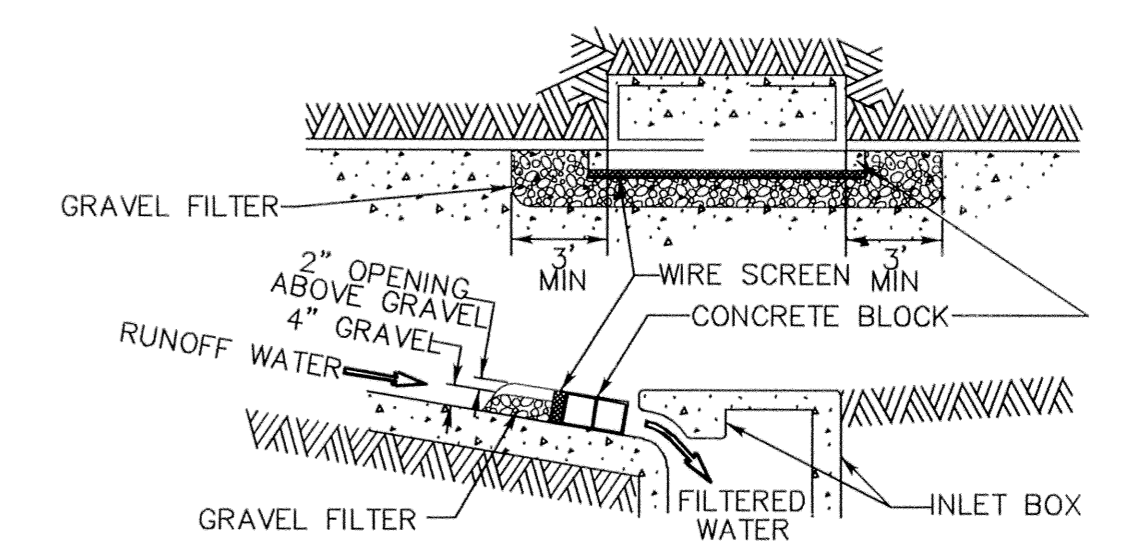


- STABILIZED CONSTRUCTION ENTRANCE**
- GENERAL NOTES
- STONE SHALL BE 3 TO 5 INCH DIAMETER CRUSHED ROCK OR ACCEPTABLE CRUSHED PORTLAND CEMENT CONCRETE.
 - LENGTH SHALL BE SHOWN ON PLANS, WITH A MINIMUM LENGTH OF 30 FEET FOR LOTS WHICH ARE LESS THAN 150 FEET FROM EDGE OF PAVEMENT. THE MINIMUM DEPTH IN ALL OTHER CASES SHALL BE 50 FEET.
 - THE THICKNESS SHALL NOT BE LESS THAN 6 INCHES.
 - THE WIDTH SHALL BE NO LESS THAN THE FULL WIDTH OF ALL POINTS OF INGRESS OR EGRESS.
 - WHEN NECESSARY, VEHICLES SHALL BE CLEANED TO REMOVE SEDIMENT PRIOR TO ENTRANCE ONTO A PUBLIC ROADWAY. WHEN WASHING IS REQUIRED, IT SHALL BE DONE ON AN AREA STABILIZED WITH CRUSHED STONE WITH DRAINAGE FLOWING AWAY FROM BOTH THE STREET AND THE STABILIZED ENTRANCE. ALL SEDIMENT SHALL BE PREVENTED FROM ENTERING ANY STORM DRAIN, DITCH OR WATERCOURSE USING APPROVED METHODS.
 - THE ENTRANCE SHALL BE MAINTAINED IN A CONDITION WHICH WILL PREVENT TRACKING OR FLOWING OF SEDIMENT ONTO PAVED SURFACES. THIS MAY REQUIRE PERIODIC TOP DRESSING WITH ADDITIONAL STONE AS CONDITIONS DEMAND. ALL SEDIMENT SPILLED, DROPPED, WASHED OR TRACKED ONTO PAVED SURFACES, MUST BE REMOVED IMMEDIATELY.
 - THE ENTRANCE MUST BE PROPERLY GRADED OR INCORPORATE A DRAINAGE SWALE TO PREVENT RUNOFF FROM LEAVING THE CONSTRUCTION SITE.
- | | | | |
|----------------------------------|----------------|----------------------------------|----------------|
| STABILIZED CONSTRUCTION ENTRANCE | 02270.0 | STABILIZED CONSTRUCTION ENTRANCE | 02270.0 |
| | DEC. 92 2070 A | | DEC. 92 2070 A |



FILTER FABRIC DROP INLET PROTECTION

RECORD DRAWINGS Sept. 30, 2009
 NOTE: THE INTENT OF THE OWNER AND ENGINEER WAS TO CONSTRUCT THE IMPROVEMENTS ACCORDING TO THESE PLANS AS APPROVED BY THE TOWN OF ADDISON. THE LINES AND GRADES WERE SET ON THE GROUND FOR CONSTRUCTION ACCORDING TO SAID PLANS. WE ARE NOT AWARE OF ANY CHANGES OR REVISIONS TO THESE PLANS DURING CONSTRUCTION EXCEPT AS NOTED ON THE PLANS.



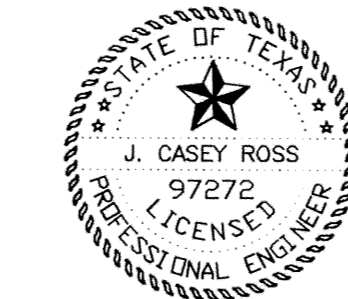
SEDIMENT BARRIER AT INLETS

OR TYPE P-2 INLET FILTERS AFTER PAVEMENT CONSTRUCTION (NOT TO SCALE)

BENCHMARKS:
 1. SQUARE CUT AT THE BACK OF CURB ON THE CENTER OF A CONCRETE INLET LOCATED ON THE EAST SIDE OF QUORUM PARKWAY APPROXIMATELY ±65' SOUTH OF THE CENTERLINE INTERSECTION OF QUORUM PARKWAY AND AIRPORT PARKWAY.
 ELEVATION = 630.71'

2. SQUARE CUT ON THE NORTHWEST CORNER OF A CONCRETE INLET LOCATED ON THE NORTH SIDE OF AIRPORT PARKWAY AT THE CENTERLINE INTERSECTION OF AIRPORT PARKWAY AND SPECTRUM DRIVE.
 ELEVATION = 619.31'

THESE CONSTRUCTION PLANS WERE PREPARED UNDER THE RESPONSIBLE SUPERVISION OF J. CASEY ROSS, LICENSED PROFESSIONAL ENGINEER NO. 97272.
J. Casey Ross 9/30/09



NO.	DATE	BY	REVISION
1	4/08/08	JCR	REVISED ALL TOWNHOME LOT LINES

EROSION CONTROL PLAN					
MERIDIAN SQUARE					
TOWN OF ADDISON					
DALLAS COUNTY, TEXAS					
DOWDEY, ANDERSON & ASSOCIATES, INC. 5225 Village Creek Drive, Suite 200 Plano, Texas 75093 972-931-0694					
DESIGN	DRAWN	CHECKED	DATE	SCALE	JOB SHEET
JBA	WBJ	JCR	11/17/08	1" = 40'	07031B 1