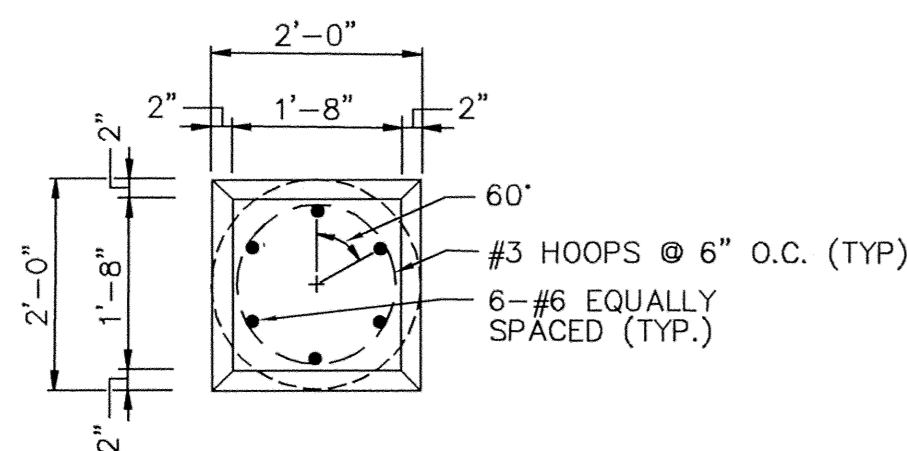
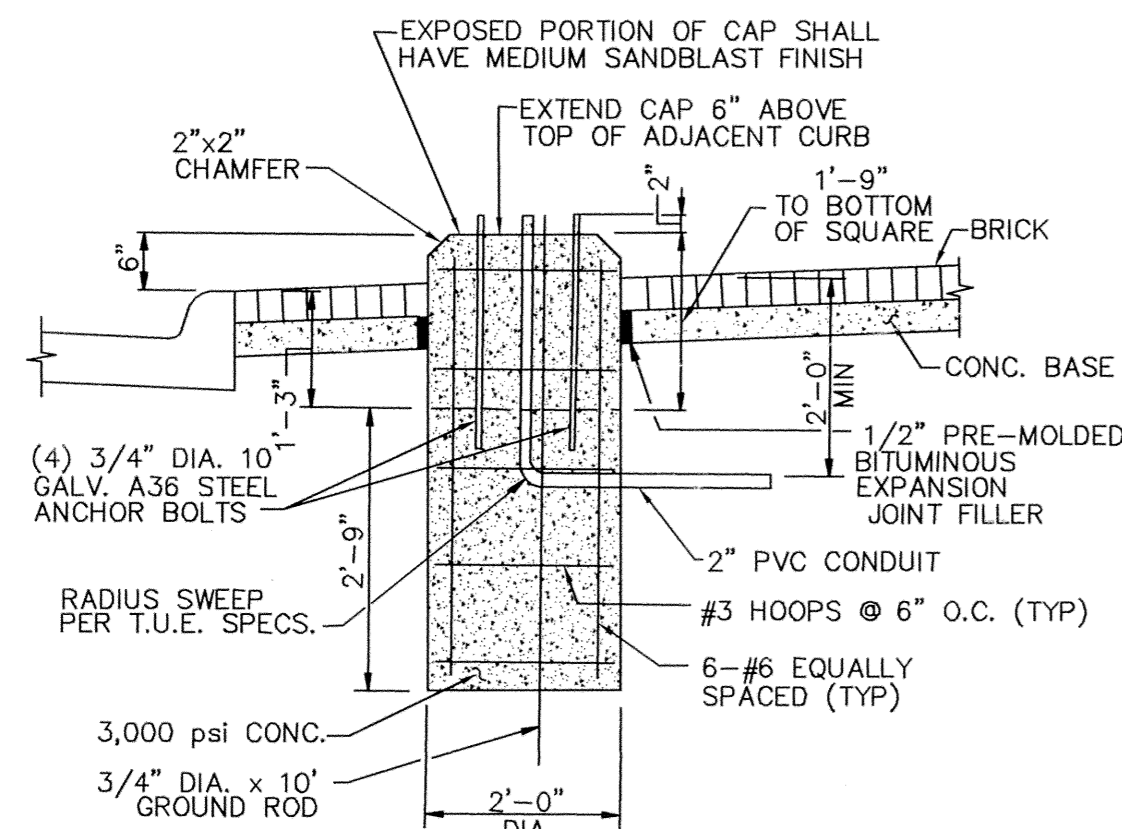


ALTERNATE
PEDESTRIAN LIGHT FIXTURE FOOTING
AT UTILITY CONFLICT
N.T.S.
(NOT TO BE USED FOR HANGING LIGHT FOUNDATION)

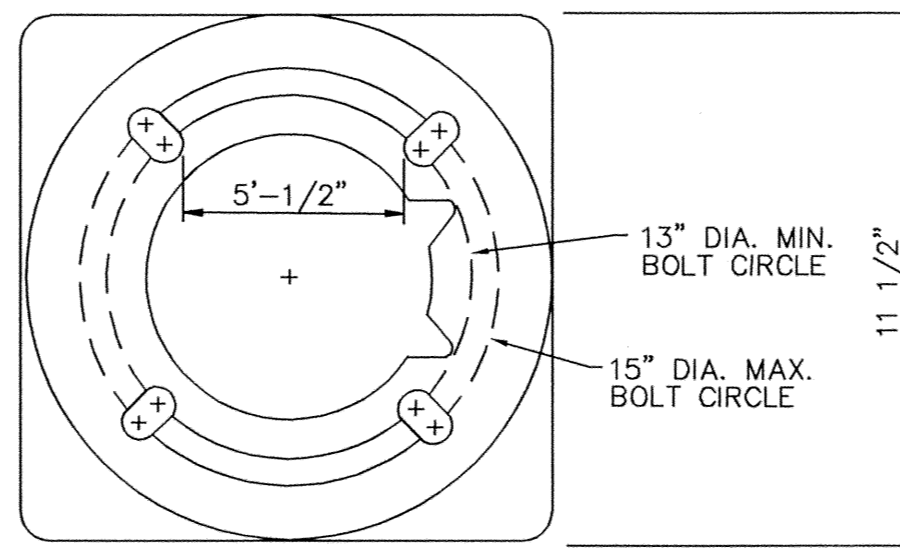


LIGHT FIXTURE FOUNDATION AND CAP PLAN
(PEDESTRIAN AND VEHICULAR POLE)
N.T.S.



PEDESTRIAN
LIGHT FIXTURE FOUNDATION
AND CAP SECTION
N.T.S.

USE CAUTION WHEN SETTING ANCHOR BOLTS.
BOLTS MUST BE VERT. STRAIGHT &
CENTERED ON DIMENSIONS SHOWN.



BASE ANCHOR PLATE
(PEDESTRIAN POLE)
N.T.S.

NOTE:
ADEQUATE DRAINAGE
MUST BE PROVIDED IN
CONC. FOUNDATION
OR GROUT.

STREET LIGHTING NOTES

1. THE PEDESTRIAN STREET LIGHTING FOR THIS PROJECT WILL CONSIST OF INSTALLING OF 2" PVC CONDUIT, LIGHT POLE BASES, PULL BOXES (HANDHOLES) LIGHT POLES, LUMINAIRES, WIRING & CONNECTION TO POWER SOURCE AS A SOURCE AS A COMPLETE SYSTEM PER DETAILED SPECIFICATIONS.
2. ALL STREET LIGHTING CONDUIT IS TO BE INSTALLED WITH A MIN. OF 24 INCHES OF COVER TO THE TOP OF THE PIPE FROM FINISHED PMT. TO AVOID CONFLICT WITH IRRIGATION LINES WHICH WILL BE @ 12" & 18" DEPTH. CONDUIT SHOULD BE NO DEEPER THAN 36" TO AVOID CONFLICT WITH OTHER UTILITIES.
3. FOR THE PURPOSE OF COORDINATION, PEDESTRIAN LIGHTS TO BE INSTALLED PER THE STREETScape PLANS FOR THIS PROJECT WILL BE THE FOLLOWING:

PLATE 13

SEE SHEET C48.00 FOR POLE TYPES.

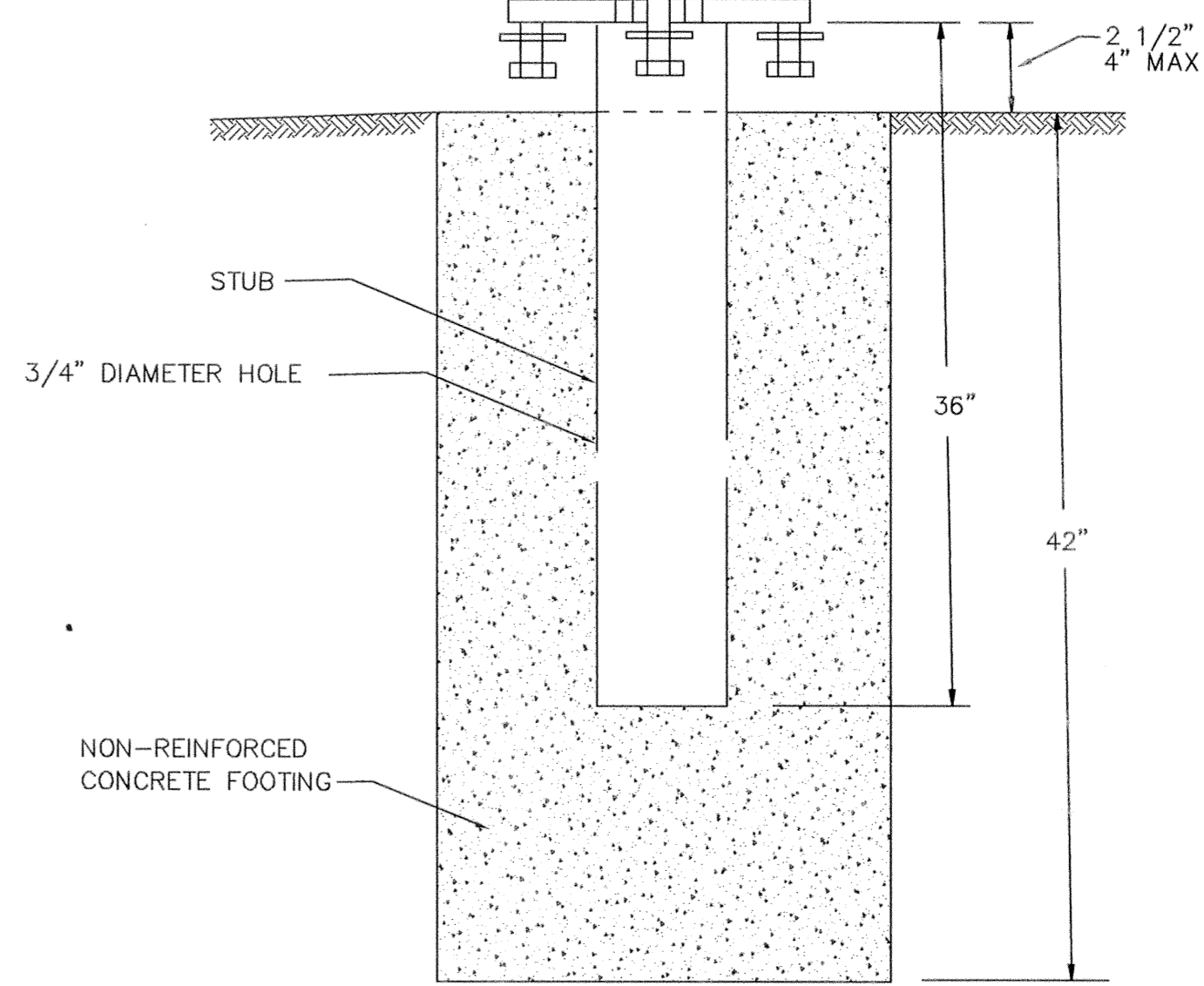
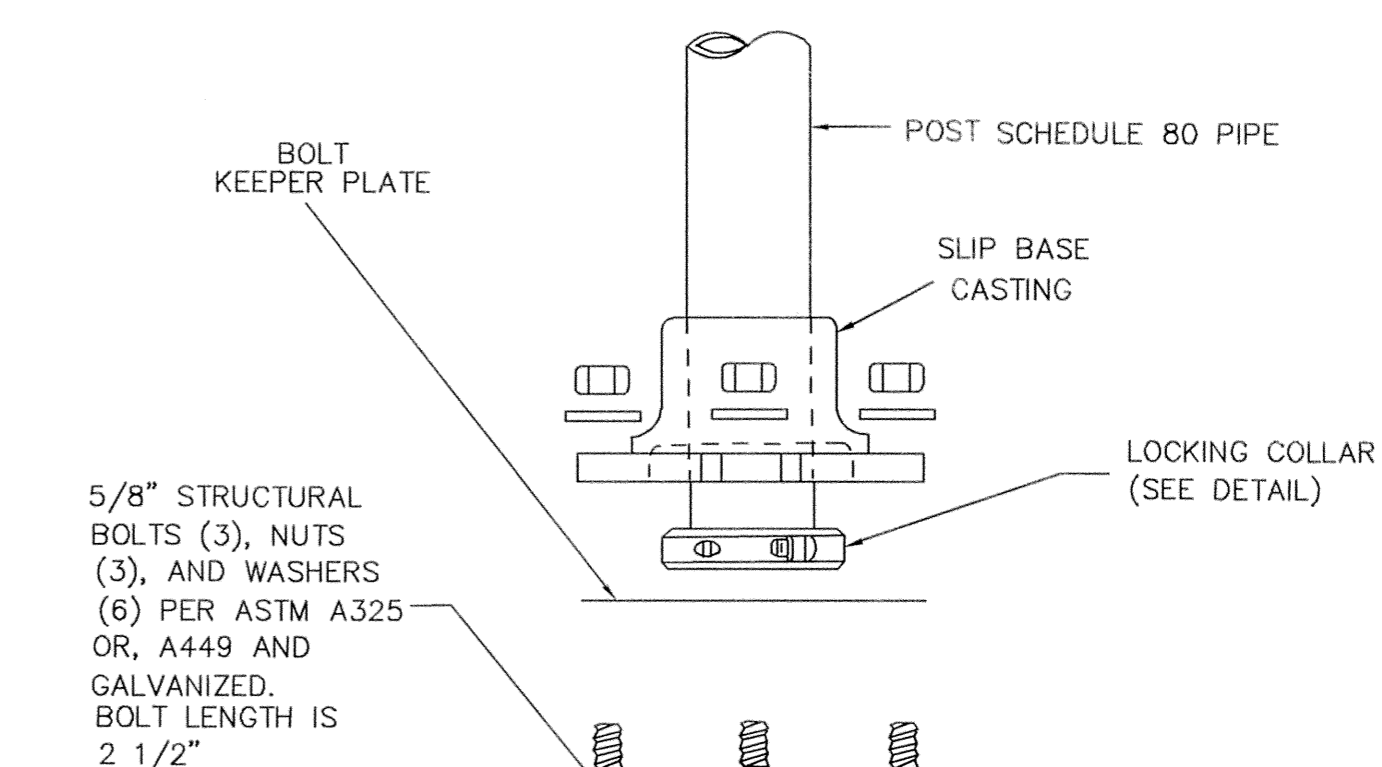
THIS POLE WILL BE INSTALLED WITH A 175 WATT METAL HALIDE
BEGA 9801 ED-17MH/120V FIXTURE AND LUMINAIRE.

POLES WILL BE PRIMED AND PAINTED AT THE FACTORY.

4. LOCATIONS OF ANY STREET LIGHTS MAY NOT BE ALTERED WITHOUT PERMISSION FROM THE ENGINEER.
5. THE LETTER "C" SHALL BE STAMPED OR CHISELED ON CURB AT ALL LOCATIONS OF CONDUIT UNDER STREETS, DRIVES AND INTERSECTIONS.

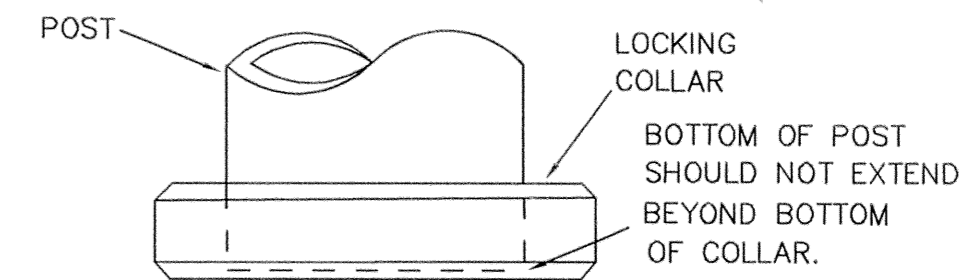
TRAFFIC CONTROL NOTES:

1. ALL SIGNAGE BARRICADES, AND PAVEMENT MARKINGS SHALL BE IN ACCORDANCE WITH THE LATEST REVISION OF THE TEXAS MANUAL UNIFORM TRAFFIC CONTROL DEVICES AND THE STANDARD HIGHWAY SIGN DESIGN FOR TEXAS (1980).
2. LOCATIONS SHOWN FOR SIGNAGE AND PAVEMENT MARKINGS ARE APPROXIMATE FINAL LOCATIONS MAY CHANGE DUE TO POST CONSTRUCTION CONDITIONS AND PRESENCE OF OTHER PHYSICAL FEATURES. FINAL LOCATION OF ALL TRAFFIC CONTROL DEVICES SHALL BE FIELD VERIFIED WITH CITY PRIOR TO INSTALLATION.
3. ALL PAVEMENT MARKINGS OTHER THAN BUTTONS SHALL BE THERMOPLASTIC UNLESS OTHERWISE NOTED.
4. ALL SIGNS SHALL BE HIGH INTENSITY AND THE SIZES SHALL BE STANDARD UNLESS OTHERWISE NOTED.
5. ALL TRAFFIC SIGNS, POSTS, AND MATERIALS SHALL BE INSTALLED PER DETAIL THIS SHEET.
6. FOR STOP SIGNS THAT WILL ACCEPT FUTURE STREET SIGNS, EXTEND POST ABOVE STOP SIGN SUFFICIENT FOR MOUNTING.
(FOR ALL OTHERS, POSTS SHALL NOT BE EXTENDED ABOVE SIGN.)
7. CHANGES TO TYPICAL SIGN POST LOCATION MADE AT ENGINEER'S DISCRETION.

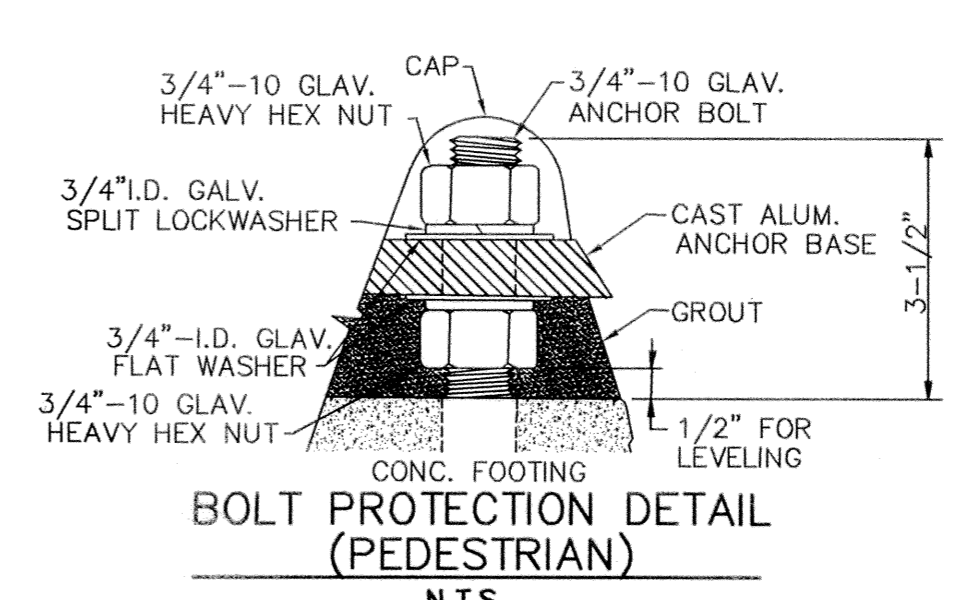


BASE DETAIL

* ADDISON CIRCLE
FINIAL SHALL BE
MOUNTED IN THE
TOP OF THE POLE



LOCKING COLLAR DETAIL



BOLT PROTECTION DETAIL
(PEDESTRIAN)
N.T.S.

RECORD DRAWINGS Sept. 30, 2009
NOTE: THE INTENT OF THE OWNER AND
ENGINEER WAS TO CONSTRUCT THE
IMPROVEMENTS ACCORDING TO THESE
PLANS AS APPROVED BY THE TOWN OF
ADDISON. THE LINES AND GRADES WERE
SET ON THE GROUND FOR CONSTRUCTION
ACCORDING TO SAID PLANS. WE ARE NOT
AWARE OF ANY CHANGES OR REVISIONS TO
THESE PLANS DURING CONSTRUCTION
EXCEPT AS NOTED ON THE PLANS.

DETAILS

STREET LIGHT AND SIGNAGE PLAN							
MERIDIAN SQUARE							
TOWN OF ADDISON							
DALLAS COUNTY, TEXAS							
DOWDEY, ANDERSON & ASSOCIATES, INC.							
5225 Village Creek Drive, Suite 200 Plano, Texas 75093 972-931-0694							
DESIGN	DRAWN	CHECKED	DATE	SCALE	JOB	SHEET	
JBA	WBJ	JCR	11/17/08	N.T.S.	07031B	1	1

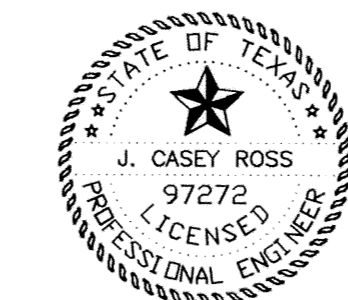
BENCHMARKS:

1. SQUARE CUT AT THE BACK OF CURB ON THE CENTER OF A CONCRETE INLET LOCATED ON THE EAST SIDE OF QUORUM PARKWAY APPROXIMATELY ±65' SOUTH OF THE CENTERLINE INTERSECTION OF QUORUM PARKWAY AND AIRPORT PARKWAY.
ELEVATION = 630.71'

2. SQUARE CUT ON THE NORTHWEST CORNER OF A CONCRETE INLET LOCATED ON THE NORTH SIDE OF AIRPORT PARKWAY AT THE CENTERLINE INTERSECTION OF AIRPORT PARKWAY AND SPECTRUM DRIVE.
ELEVATION = 619.31'

THESE CONSTRUCTION PLANS WERE PREPARED UNDER THE RESPONSIBLE SUPERVISION OF J. CASEY ROSS, LICENSED PROFESSIONAL ENGINEER NO. 97272.

J. Casey Ross 9/30/09



NO.	DATE	BY	REVISION