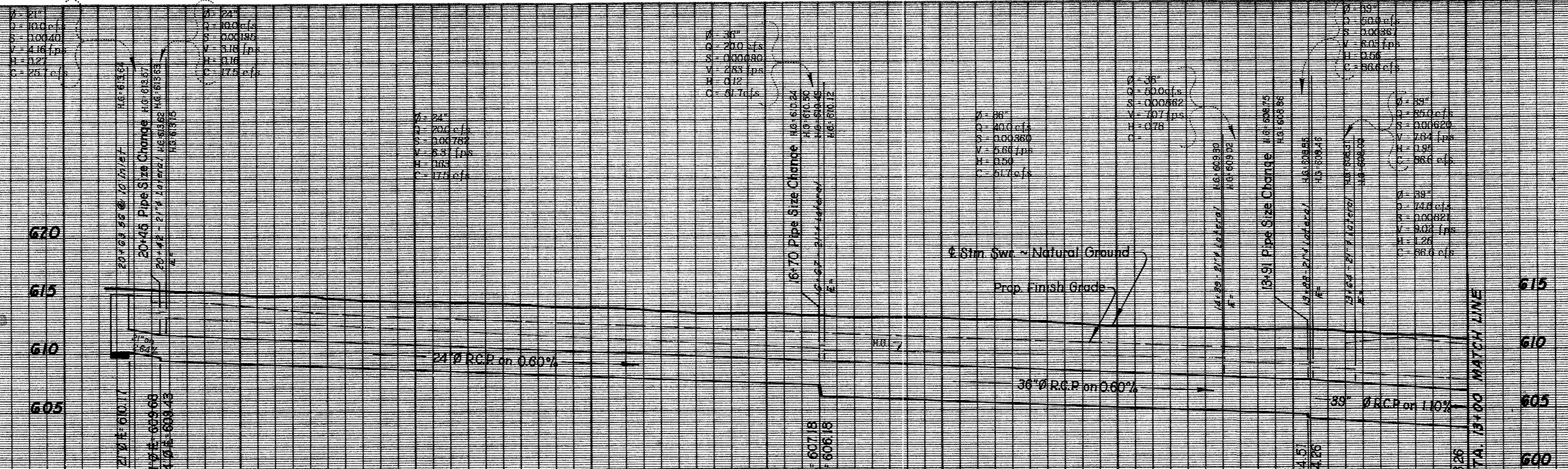
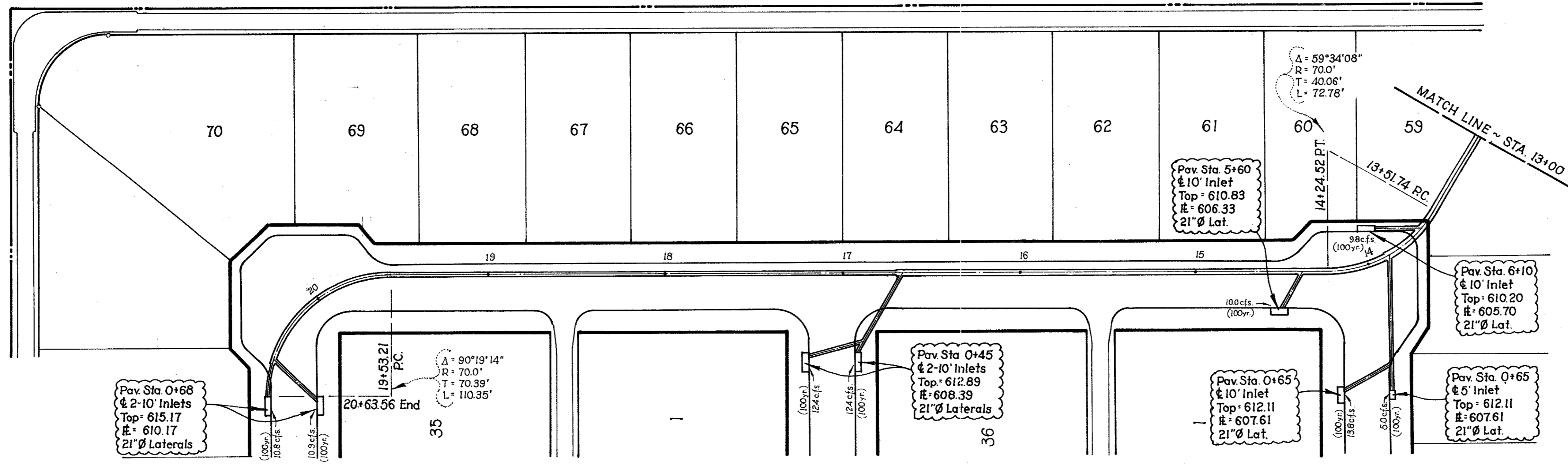


NOTES:
 It is the responsibility of the Contractor to notify all utility companies and verify all existing utilities prior to the start of construction.
 It will be the responsibility of the Contractor to avoid any conflicts between the water and sewer and the storm sewer inlets.
 All storm sewer pipe shall be R.C.P. Class III and shall have a minimum of 6" sand bedding, or equivalent bedding material.
 Utility Contractor shall be responsible for paving of variable height curb, inlet throat and paving leaveouts.



| | | | | | | |
|---|-------|--------------|-----------------------|-------|----------------|-------|
| STORM SEWER | | | | | | |
| MIDWAY MEADOWS | | | | | | |
| ADDISON, TEXAS | | | | | | |
| Don A. Tipton, Inc. ~ Consulting Engineers | | | | | | |
| 13600 L.B.J. Freeway ~ Garland, Texas 75041 | | | | | | |
| DESIGN | DRAWN | DATE | SCALE | NOTES | FILE | NO |
| D.A.T. | g.e. | June 1, 1979 | H: 1"=40' V: 1"=6' | d.b. | Midway Meadows | 15/19 |
| STORM SEWER #1025 | | | | | | |