

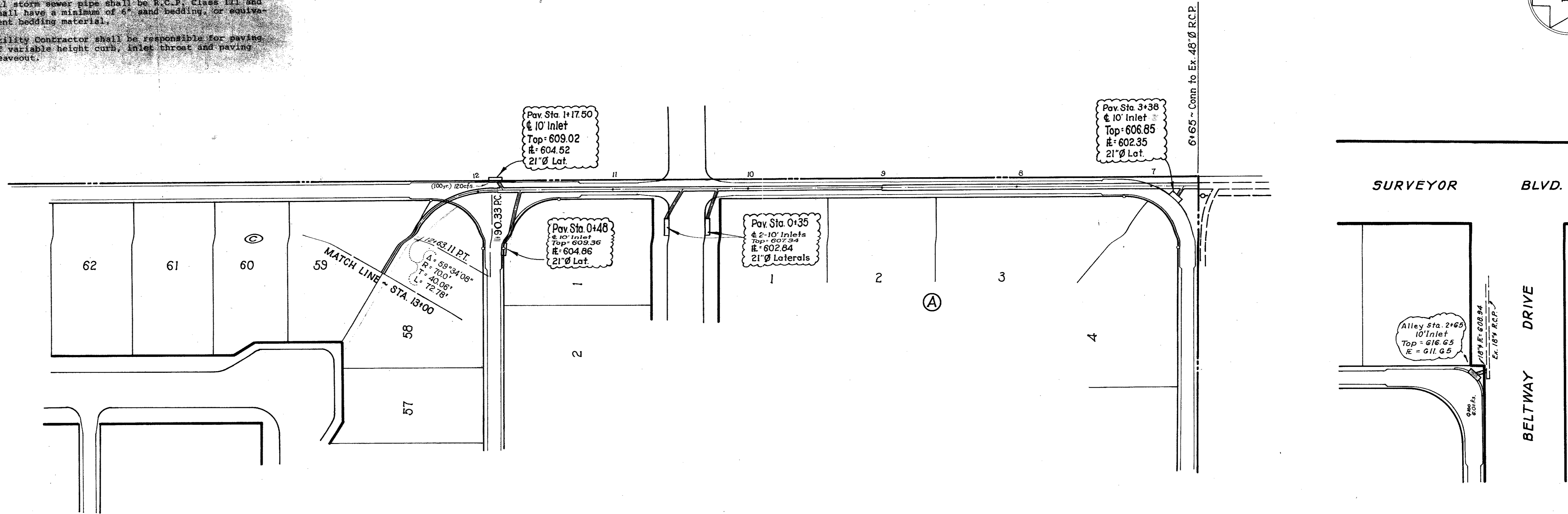
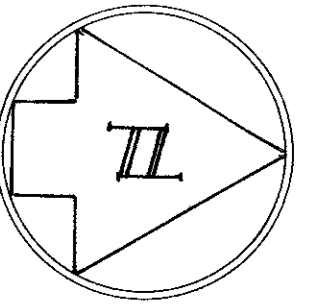
NOTES:

It is the responsibility of the Contractor to notify all utility companies and verify all existing utilities prior to the start of construction.

It will be the responsibility of the Contractor to avoid any conflicts between the water and sewer and the storm sewer inlets.

All storm sewer pipe shall be R.C.P. Class III and shall have a minimum of 6" sand bedding, or equivalent bedding material.

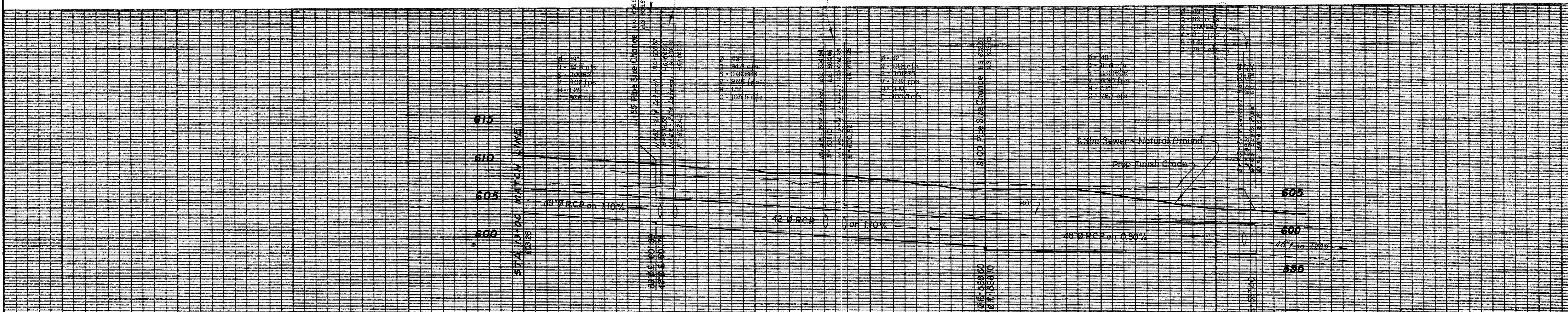
Utility Contractor shall be responsible for paving of variable height curb, inlet throat and paving leaveout.



$\phi = 42"$
 $Q = 74.8 \text{ cfs}$
 $S = 0.00653$
 $V = 7.77 \text{ fps}$
 $H = 0.94$
 $C = 105.5 \text{ cfs}$

$\phi = 42"$
 $Q = 84.8 \text{ cfs}$
 $S = 0.00711$
 $V = 10.74 \text{ fps}$
 $H = 1.79$
 $C = 105.5 \text{ cfs}$

$\phi = 42"$
 $Q = 103.3 \text{ cfs}$
 $S = 0.01054$
 $V = 10.74 \text{ fps}$
 $H = 1.79$
 $C = 105.5 \text{ cfs}$



STORM SEWER						
MIDWAY MEADOWS						
ADDISON, TEXAS						
Don A. Tipton, Inc. ~ Consulting Engineers						
13600 L.B.J. Freeway ~ Garland, Texas 75041						
DESIGN	DRAWN	DATE	SCALE	NOTES	FILE	NO.
D.A.T.	g.e.	June 1,	H: 1"=40'	d.b.	Midway	16
Inc.	Co.	1979	V: 1"=6'		Meadows	19