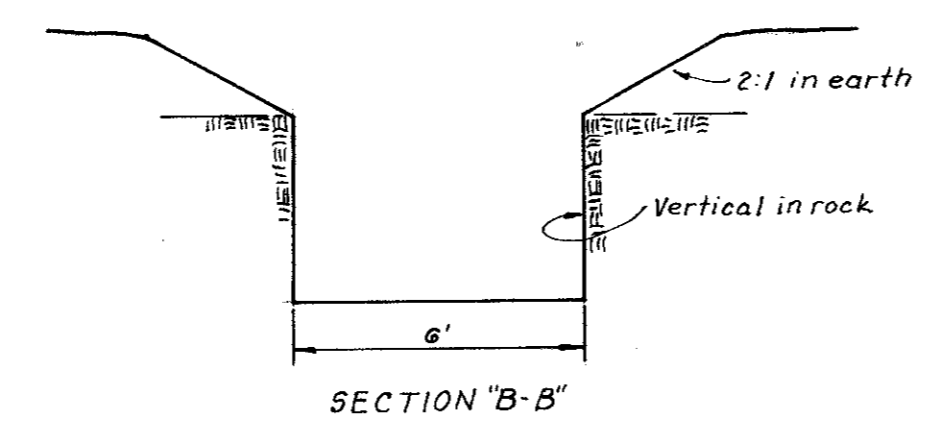
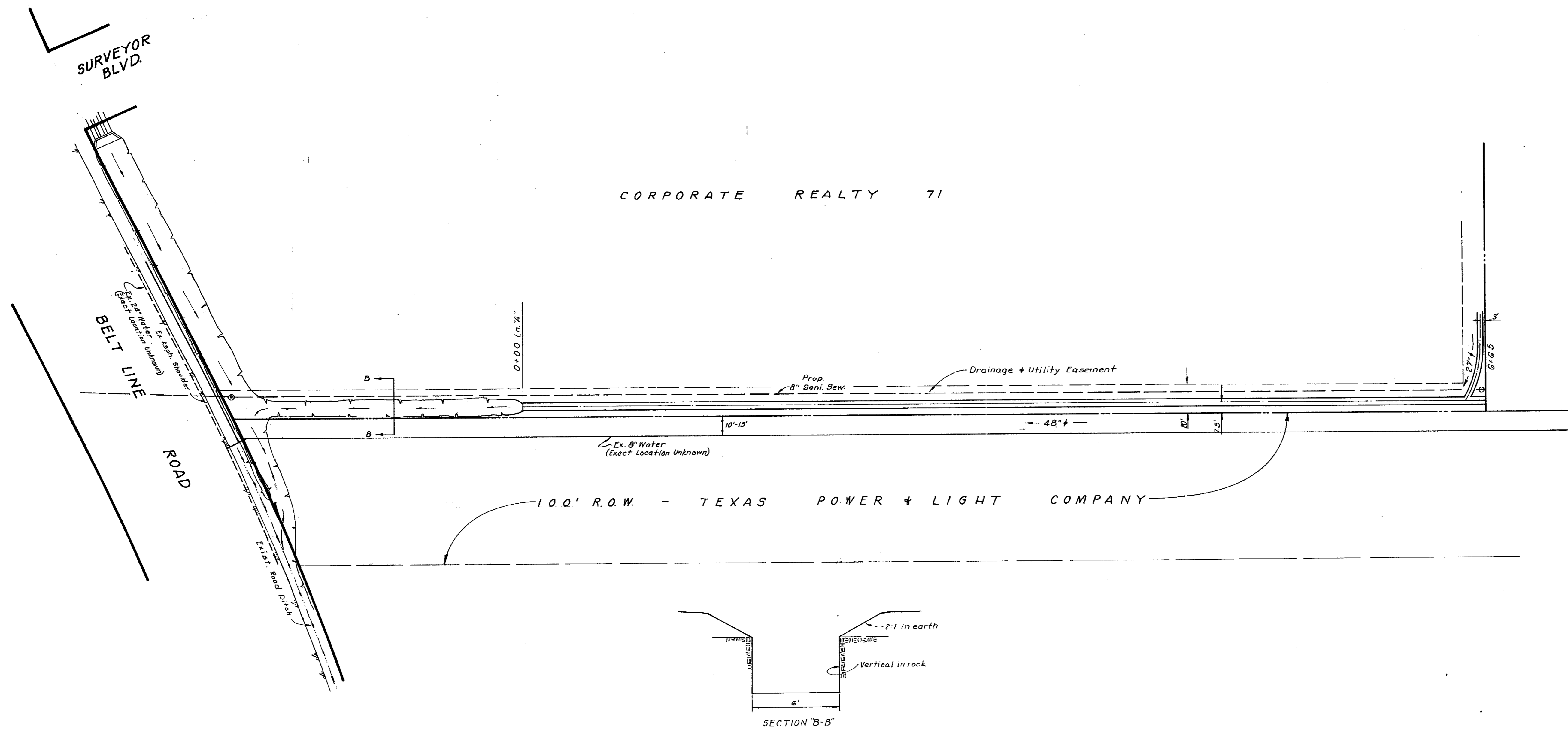
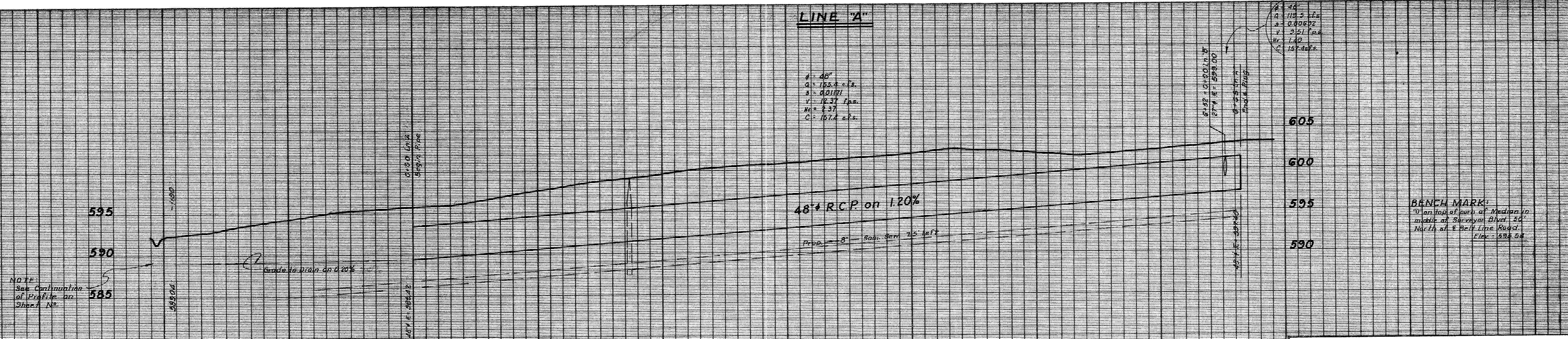


CORPORATE REALTY 71



**NOTES:**  
 It is the responsibility of the Contractor to notify all utility companies and verify all existing utilities prior to the start of construction.  
 It will be the responsibility of the Contractor to avoid any conflicts between the water and sewer and the storm sewer inlets.  
 All storm sewer pipe shall be R.C.P. Class III and shall have a minimum of 6" sand bedding, or equivalent bedding material.  
 Utility Contractor shall be responsible for paving of variable height curb, inlet throat and paving leaveout.



NOTE:  
 See Continuation of Profile on Sheet No. 5

**BENCH MARK:**  
 1/4" iron nail in center of Median in middle of Surveyor Blvd 20' North of E Belt Line Road. Elev = 588.5 ft

<b>STORM SEWER</b>						
<b>MIDWAY MEADOWS</b>						
<b>DALLAS, TEXAS</b>						
Don A. Tipton, Inc. ~ Consulting Engineers						
13600 L.B.J. Freeway ~ Garland, Texas 75041						
DESIGN	DRAWN	DATE	SCALE	NOTES	FILE	NO
D.A.T.	r.d.o.	April 30, 1979	H: 1" = 40' V: 1" = 6'	d.b.	Midway Meadows	6