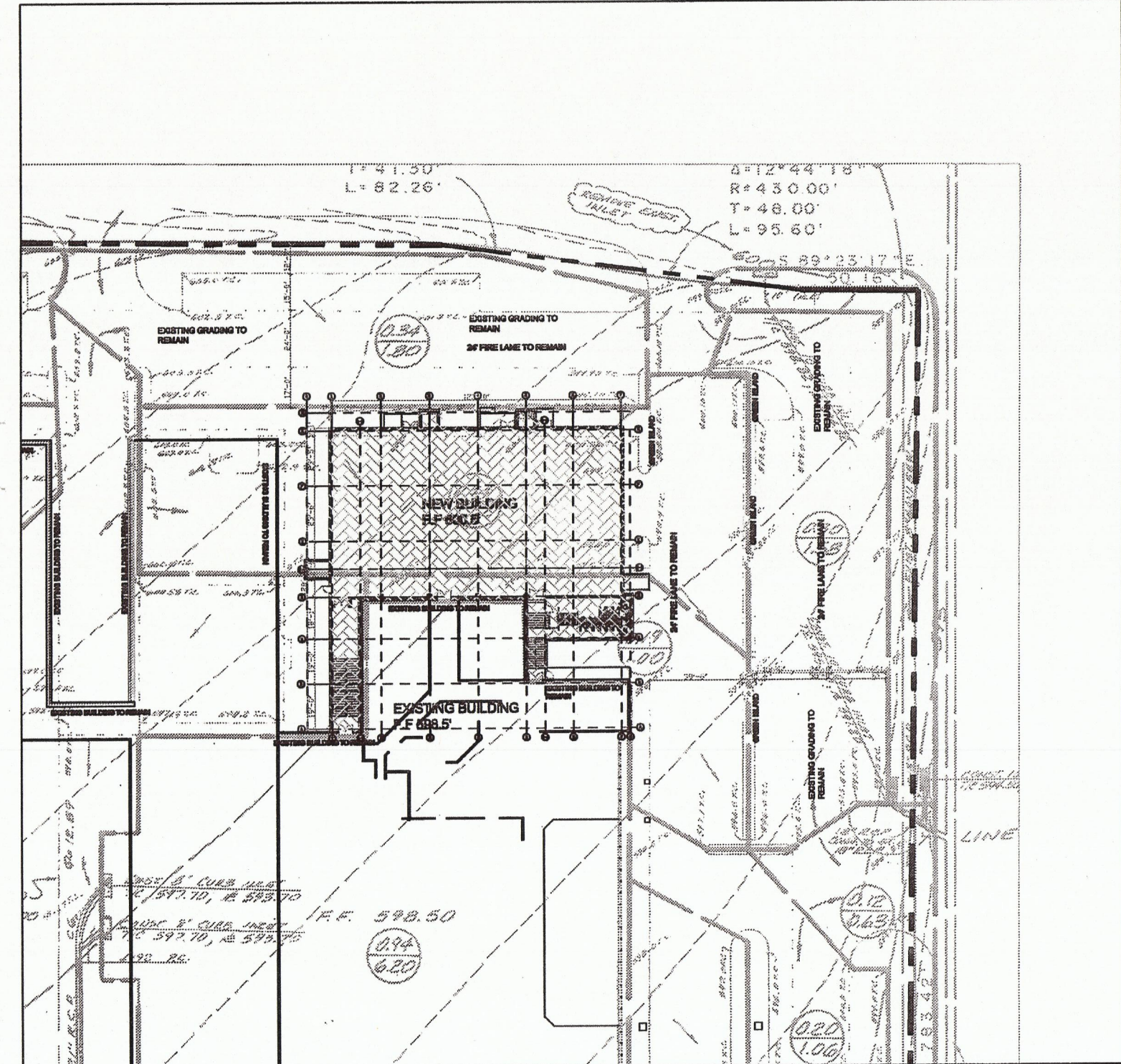
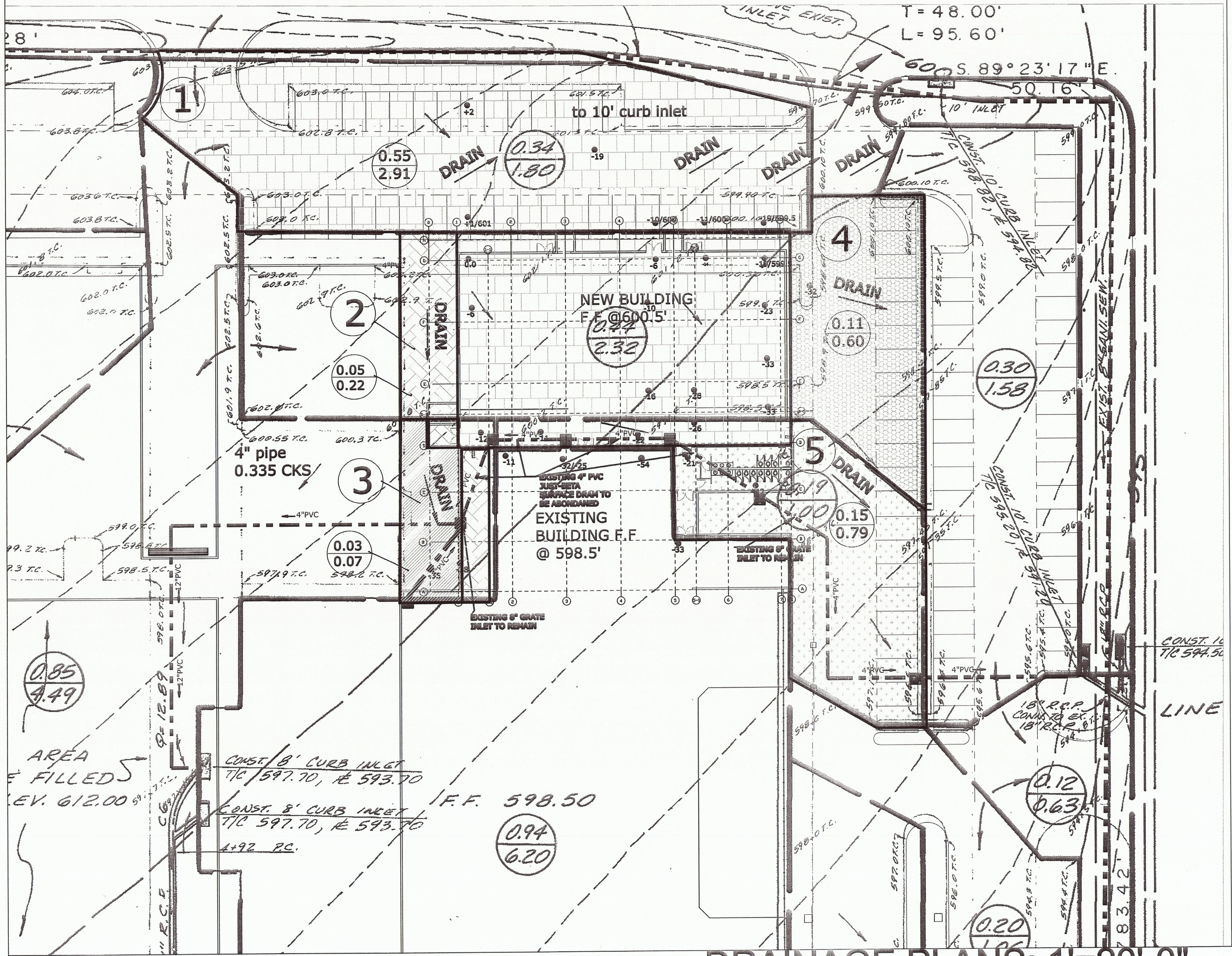


- ① $215 \times 48 + 125 \times 80 \times (245 + 175) / 2 + 35 \times 32 / 2 = 24030 = 0.55 \text{ AC}$
 $Q = 8.4 \times 0.9 \times 0.55 = 4.18$ $Q = 5.88(0.55)(0.9) = 2.91$ ① INTO 10' CURB INLET 2.91 CFS
- ② $22 \times 70 + 10 \times 10 + 13 \times 55 = 0.05 \text{ AC}$ $Q = 5.88 \times 0.5 \times 0.9 = 0.265$ XFS
- ③ $22 \times 70 - 100 = 1440 = 0.03 \text{ AC}$ $Q = 5.88 \times 0.03 \times 0.4 = 0.07$ CFS
- ②+③ INLET TO 4" PIPE $0.265 + 0.07 = 0.335$ CFS FOR 4' INLET
- ④ $42 \times (85 + 120) / 2 + 10 \times 70 = 5005 = 0.114 \text{ AC}$ $Q = 0.114 \times 5.88 \times 0.9 = 0.6$ CFS
- ⑤ $52 \times 95 + 45 \times 33 = 6425 = 0.147 \text{ AC}$ $Q = 5.88 \times 0.147 \times 0.9 = 0.78$ CFS ⑤+⑥ INTO EXISTING 10' 2.97 CFS CURB INLET
- ⑥ EXISTING 0.30/1.58

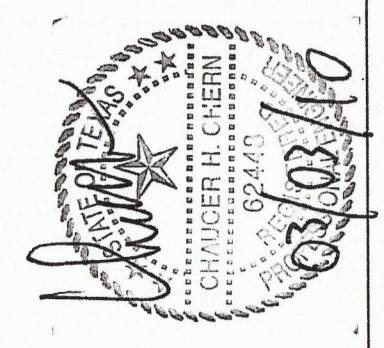


S: 1"=50'-0"

DRAINAGE PLANS: 1"=20'-0"

CHAUCER'S
DESIGN STUDIO

949 SIMON DRIVE, PLANO, TX. 75025
TEL: 972.849.6848 E-MAIL: chaucerdesignbuild@gmail.com



CROWN PLAZA HOTEL

14315 MIDWAY
ADDISON, TEXAS 75001

REVISION:

DRAFTER: CHEHSIANG CHEN
DATE: 03/01/2010

C4