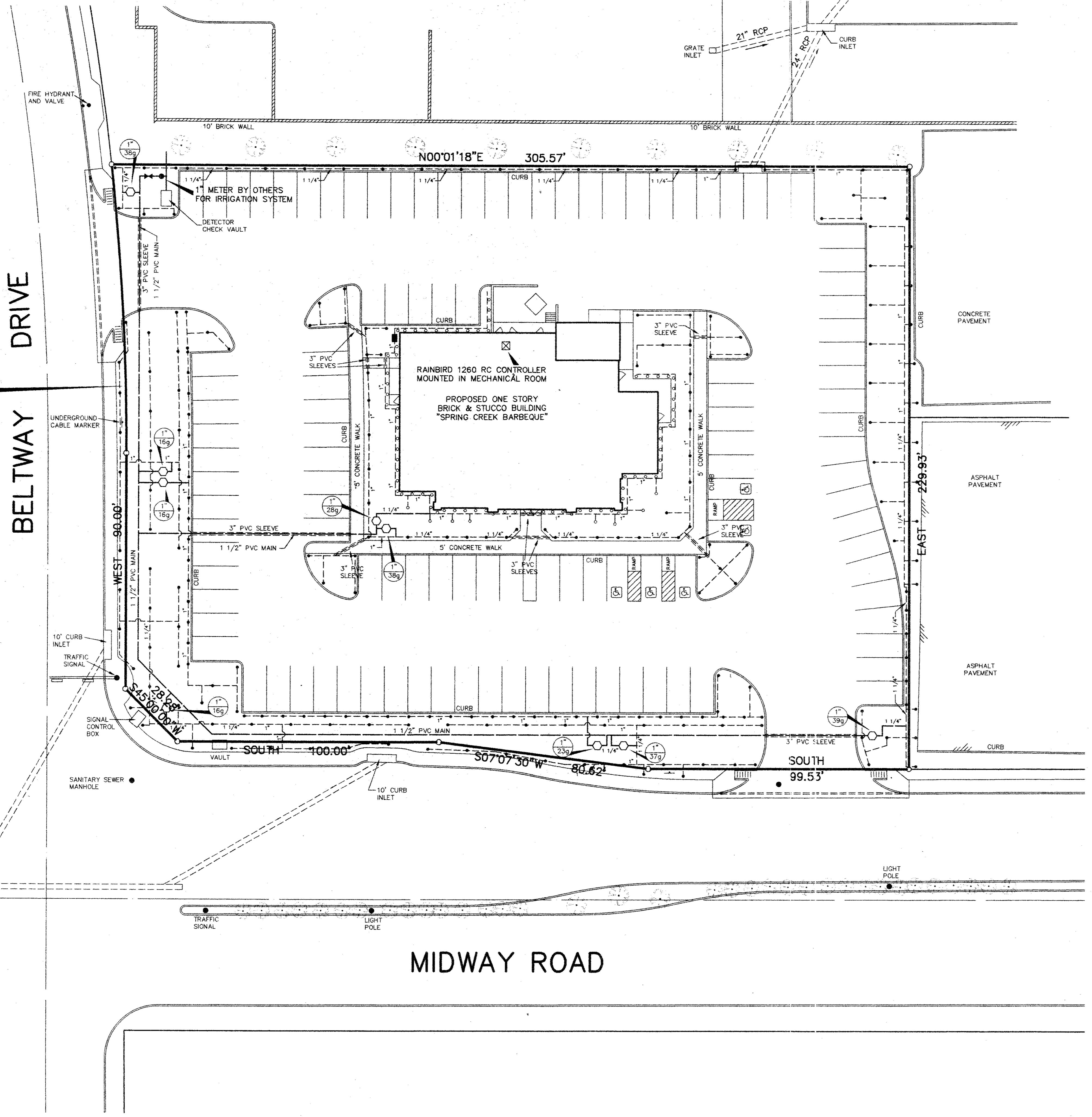


$\Delta=06^{\circ}17'12''$
 $R=1005.00'$
 $L=110.27'$
 $T=55.19'$
 $LC=110.22'$
 $CB=S86^{\circ}51'24''W$

BELTWAY DRIVE



LEGEND

- ☒ RAINBIRD 1260 RC CONTROLLER
- ◀▶ 1 1/2" DOUBLE CHECK VALVE
- 1 1/2" CLASS 200 PVC MAIN
- - - 3/4" TO 1 1/4" CLASS 200 PVC LATERALS (SIZE IS 3/4" UNLESS NOTED)
- RAINBIRD MPR NOZZLES ON COPPER RISERS
- 1804 RAINBIRD 4" POP-UP HEAD, OR 1812 RAINBIRD 12" POP-UP HEAD USE 1804 FOR TURF AREAS AND 1812 IN GROUND COVER AREAS (USE APPROPRIATE ARC CONE)
- 1" PE RAINBIRD VALVE
- VALVE SIZE
- GALLONS PER MINUTE

REVISIONS:	
DATE	DESCRIPTION
8-09-93	ADDED HC PARKING
9-07-93	REVISE FIRELANE

PREPARED BY:
DEWEY & ASSOCIATES
 ENGINEERING, SURVEYING
 LAND PLANNING, CAD DESIGNS
 & A
 2505 TEXAS DRIVE, SUITE 110 - IRVING, TEXAS 75062 • 214/255-1501

PROPOSED
SPRING CREEK BARBEQUE
 MIDWAY ROAD AT BELTWAY DRIVE - ADDISON, TEXAS

SHEET TITLE
IRRIGATION PLAN
 DATE: JUNE 21, 1993
 SCALE: 1" = 20'
 DRAWN BY: SAS (ACAD)
 CHECKED BY: JDJ
 SHEET NO.
L1 of 2