

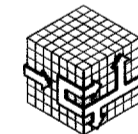
# CONSTRUCTION PLANS FOR NJ MALIN EXPANSION 5.485 ACRES CITY OF ADDISON, DALLAS COUNTY, TEXAS

**PREPARED FOR**



811 N. CENTRAL EXPRESSWAY, SUITE 229  
RICHARDSON, TEXAS 75081  
972-783-4084

**OWNER/DEVELOPER**

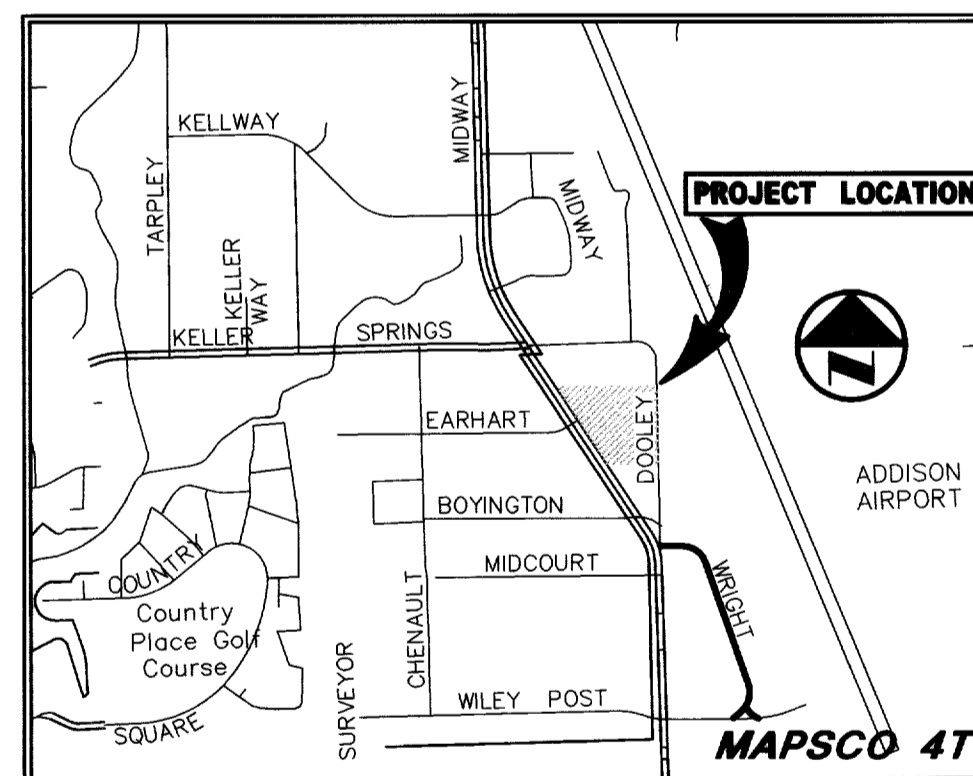


15870 MIDWAY ROAD  
ADDISON, TEXAS 75001  
972-458-2680

**PREPARED BY**



9401 LBJ FREEWAY SUITE 300 DALLAS, TEXAS 75243 972.235.3031



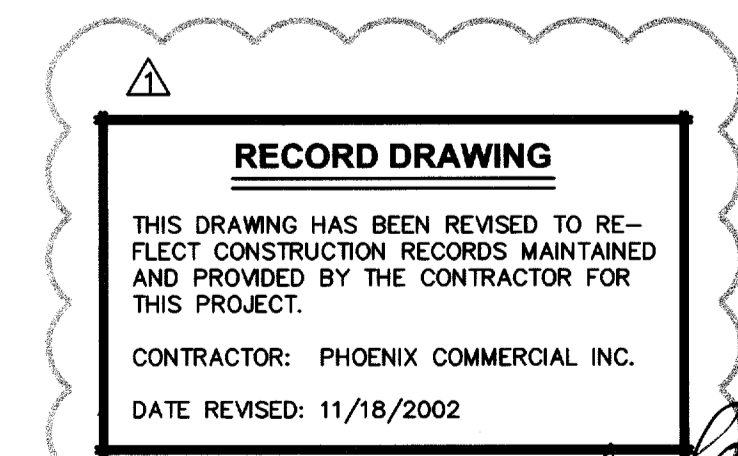
**VICINITY MAP**

**DRAWING SHEET INDEX**

SHEET	DESCRIPTION
C1.0	DEMOLITION PLAN
C2.0	DIMENSIONAL CONTROL PLAN
C3.0	GRADING PLAN
C4.0	STORM SEWER PLAN
C5.0	WATER & SANITARY SEWER PLAN
C6.0	PAVING PLAN
C7.0	EROSION CONTROL PLAN



*Steven A. Markussew*  
11/18/02



*Steven A. Markussew*  
11/18/02