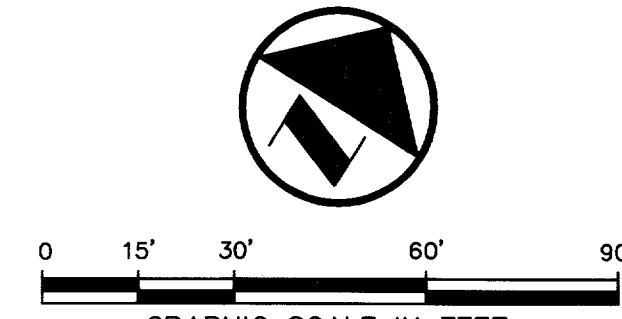


BENCH MARK LIST:
 BM #1 ALUMINUM DISK SET IN CONCRETE STAMPED "ARP 2 ADS",
 LOCATED ON THE ADDISON AIRPORT, APPROXIMATELY 400'
 EAST OF THE CONTROL TOWER
 ELEV=570.88

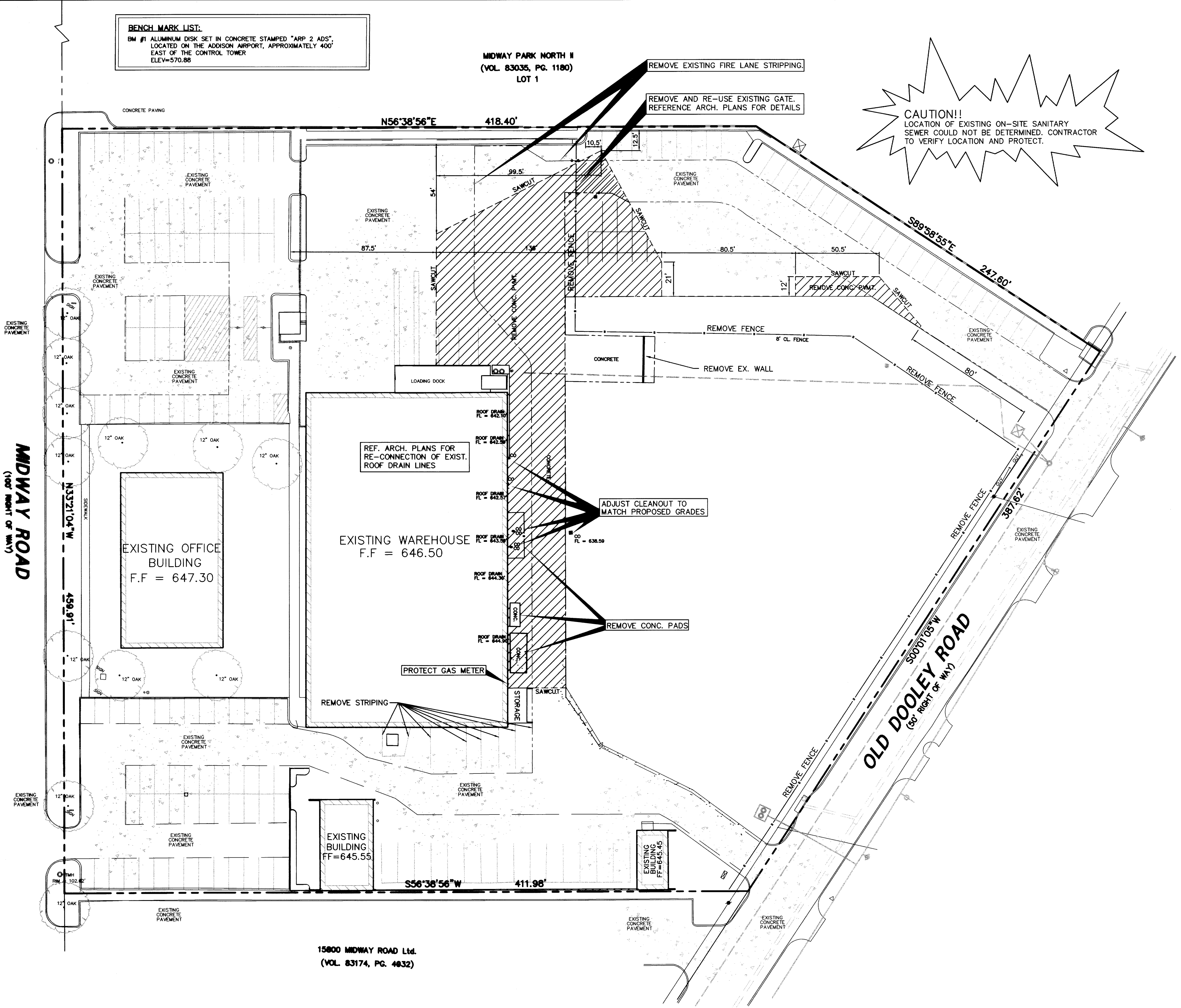
MIDWAY PARK NORTH II
 (VOL. 83035, PG. 1180)
 LOT 1



LEGEND

- BOLLARD
- ELECTRIC METER
- POWER POLE
- LIGHT STANDARD
- WATER METER
- IRRIGATION CONTROL VALVE
- FIRE HYDRANT
- CLEANOUT
- MANHOLE
- GAS METER
- TRAFFIC SIGNAL CONTROL
- TRAFFIC SIGNAL POLE
- TELEPHONE BOX
- TV BOX
- FLAG POLE
- TRAFFIC SIGN
- PROPERTY LINE
- FENCE
- FULL DEPTH SAWCUT AND REMOVE EXISTING PAVEMENT

CAUTION!!
 LOCATION OF EXISTING ON-SITE SANITARY
 SEWER COULD NOT BE DETERMINED. CONTRACTOR
 TO VERIFY LOCATION AND PROTECT.



DEMOLITION NOTES

1. REVIEW ALL GENERAL NOTES.
2. REMOVE ALL EXISTING PAVEMENT AND STRUCTURES WITHIN THE SHADED AREA UNLESS OTHERWISE NOTED.
3. SAWCUT AND REMOVE ALL EXISTING DRIVE APPROACHES THAT ARE SHADED 2 FEET FROM THE BACK OF CURB.
4. CONSULT THE DIMENSIONAL CONTROL PLAN, VERIFY THE PORTION OF EXISTING CONCRETE CURBS WHICH ARE TO REMAIN.
5. COORDINATE WITH TXU, SOUTHWESTERN BELL TELEPHONE, AND THE LOCAL CABLE COMPANY PRIOR TO THE REMOVAL AND/OR RELOCATION OF EXISTING UTILITIES.
6. ALL UTILITIES SHOULD BE CUT AND PLUGGED IN COORDINATION WITH THEIR RESPECTIVE UTILITY COMPANIES AND PRIOR TO THE DEMOLITION OF THE EXISTING BUILDINGS.
7. CONTRACTOR TO PLUG ALL EXPOSED ENDS AND ABANDONED UTILITIES.
8. CONTRACTOR TO DETERMINE SOURCE OF ALL EXPOSED UTILITIES AND IF REQUIRED, RECONNECT TO PROPOSED UTILITIES.

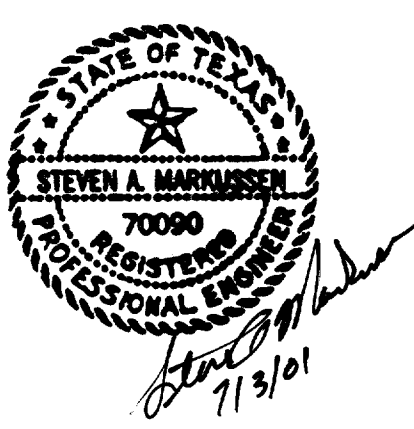
RECORD DRAWING
 THIS DRAWING HAS BEEN REVISED TO RE-
 FLECT CONSTRUCTION RECORDS MAINTAINED
 AND PROVIDED BY THE CONTRACTOR FOR
 THIS PROJECT.
 CONTRACTOR: PHOENIX COMMERCIAL INC.
 DATE REVISED: 11/18/2002

NO.	DATE	REVISION
1	11/18/2002	RECORD DRAWING

Pacheco Koch Consulting Engineers
 9401 LBJ FREEWAY SUITE 300 DALLAS, TEXAS 75243 972.235.3031

DEMOLITION PLAN
NJ MALIN EXPANSION
MIDWAY ROAD
ADDISON, TEXAS
CITY OF ADDISON, TEXAS

DESIGN	DRAWN	DATE	SCALE	NOTES	FILE	NO.
CJE	JLM	JULY 03, 2001	1"=30'			C1.0



M:\DWG-23\2306-01.074\C1.0 DEMOLITION PLAN.DWG