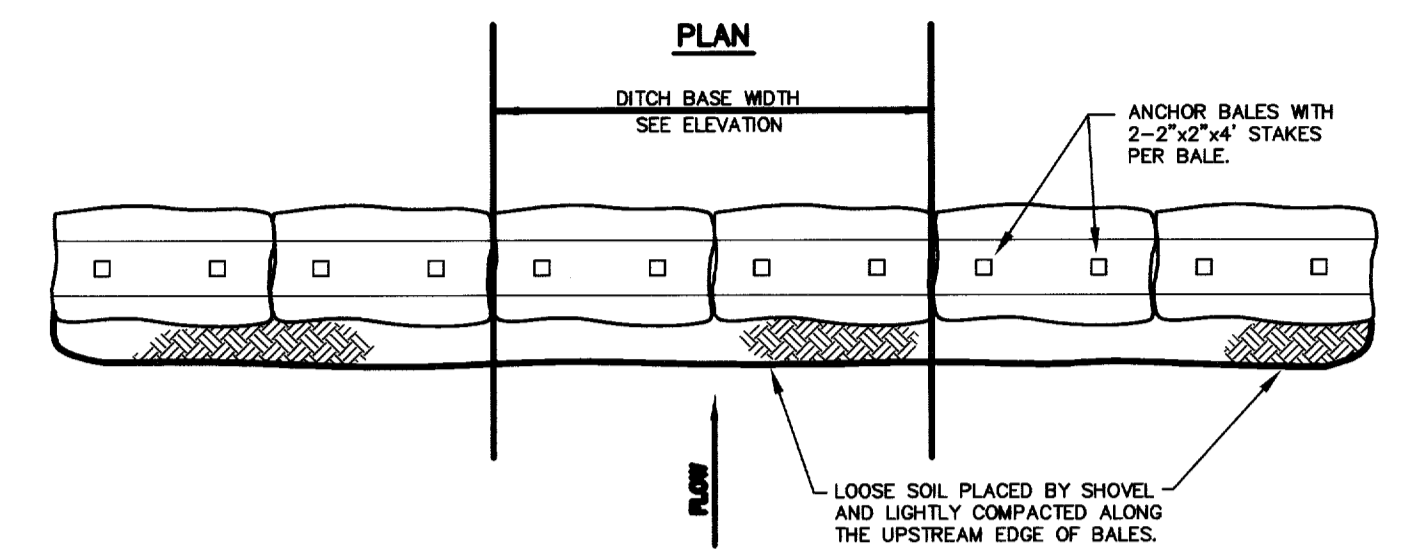
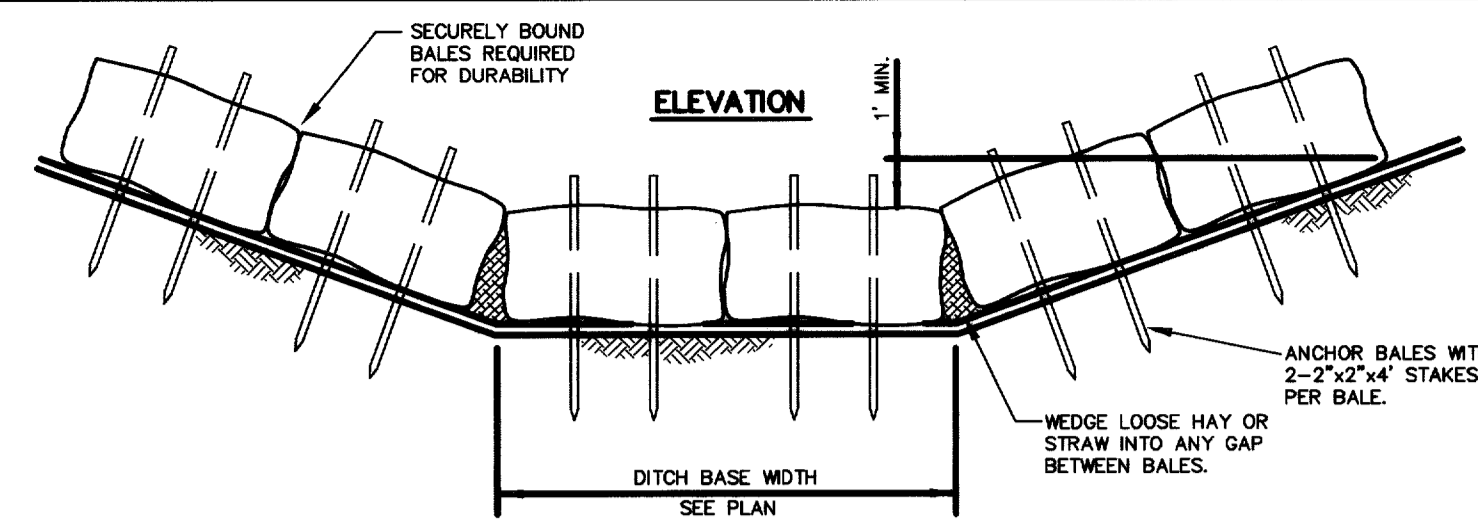
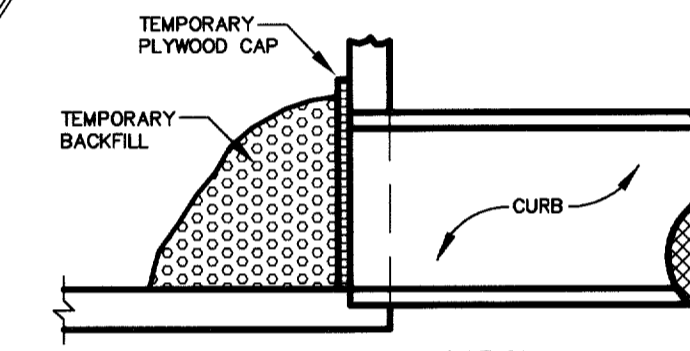


BENCHMARK LIST.
 BM #1 ALUMINUM DISK SET IN CONCRETE STAMPED "RP 2 ADS",
 LOCATED ON THE ADDISON AIRPORT, APPROXIMATELY 400'
 EAST OF THE CONTROL TOWER
 ELEV=570.86

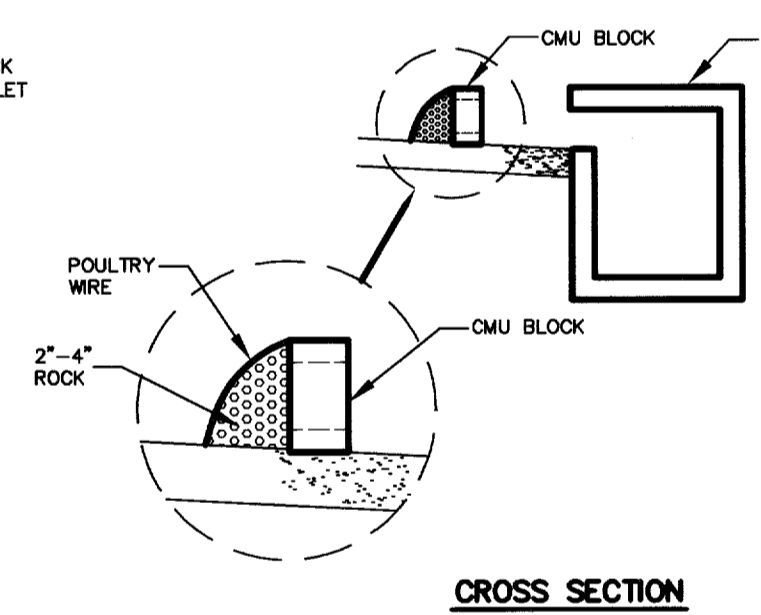
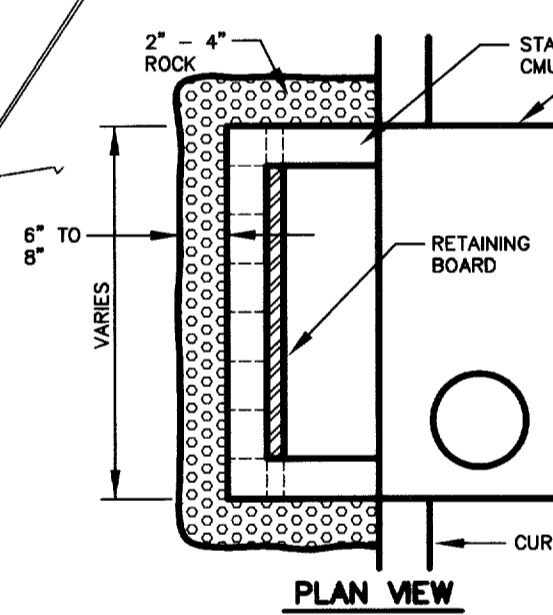
MIDWAY PARK NORTH II
 (VOL. 83035, PG. 1180)
 LOT 1



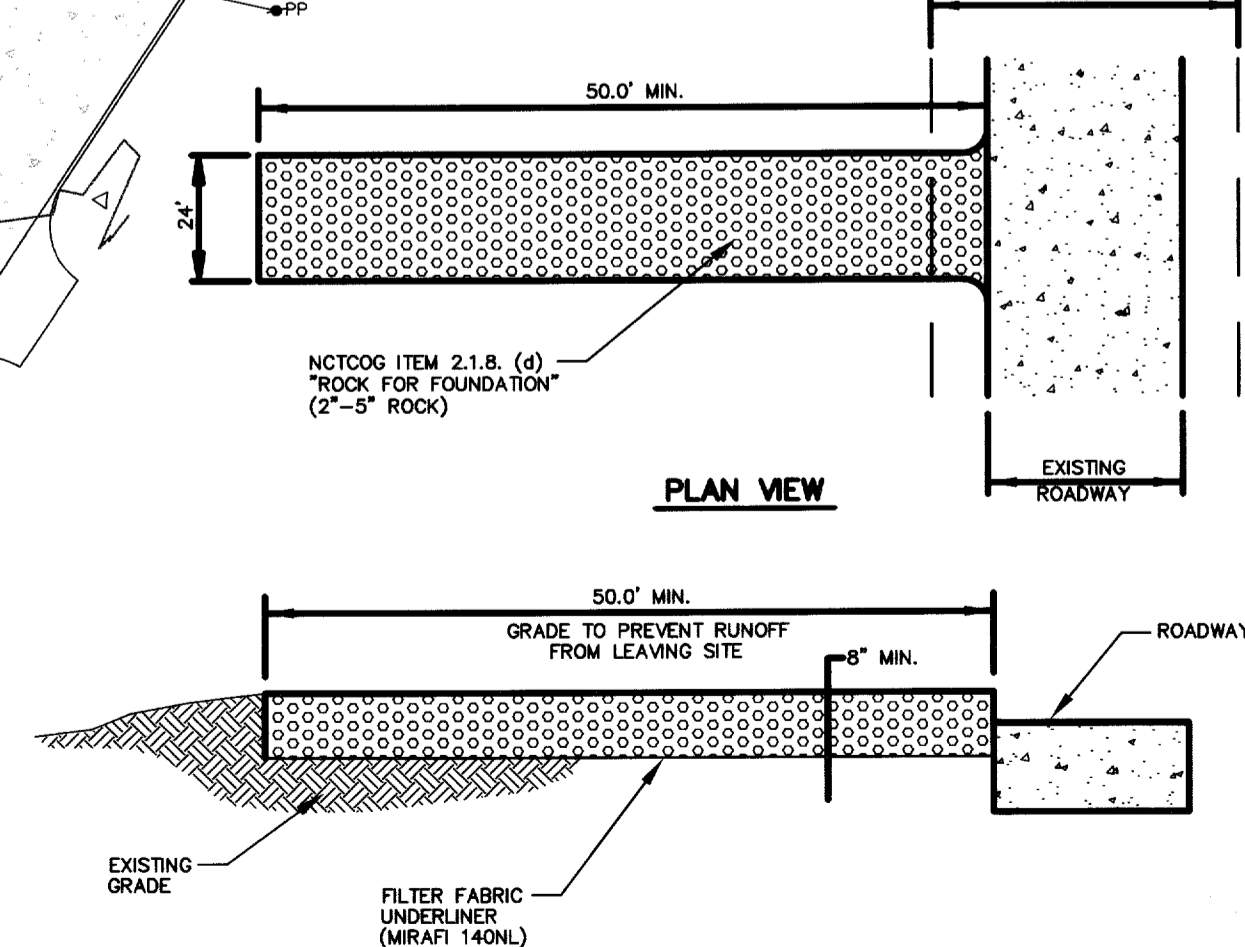
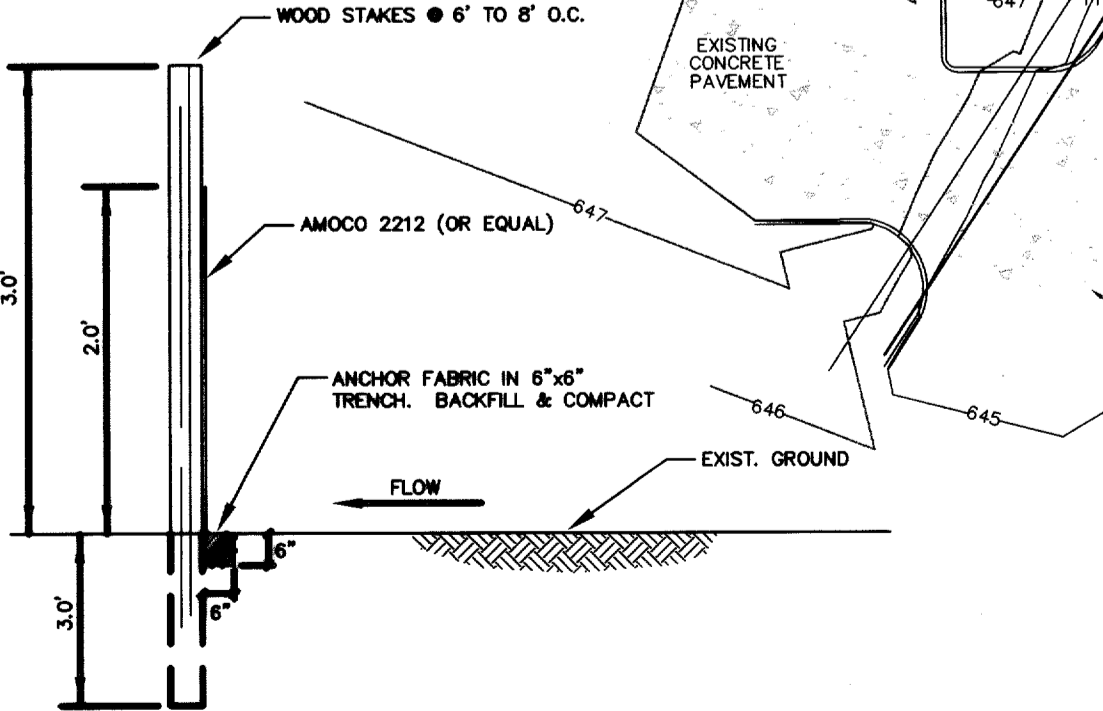
2 Hay or Straw Check Dam
 NOT TO SCALE



2 Curb-Inlet-Protection-A
 NOT TO SCALE



1 Curb Inlet Protection
 NOT TO SCALE



RECORD DRAWING

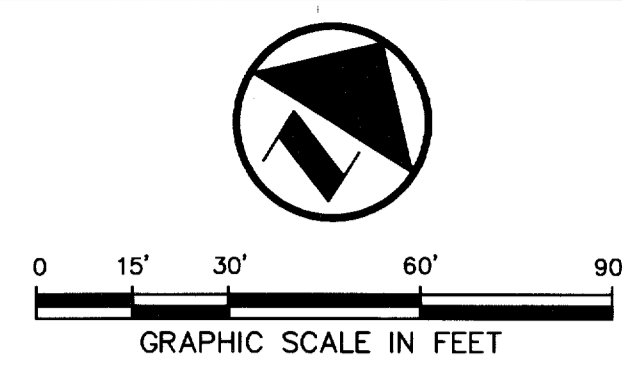
THIS DRAWING HAS BEEN REVISED TO REFLECT CONSTRUCTION RECORDS MAINTAINED AND PROVIDED BY THE CONTRACTOR FOR THIS PROJECT.

CONTRACTOR: PHOENIX COMMERCIAL INC.

DATE REVISED: 11/18/2002

POLLUTION CONTROL GENERAL NOTES

- THIS PLAN HAS BEEN PREPARED TO PROVIDE MEANS TO PREVENT OR MINIMIZE POLLUTION OF STORM
- THE CONSTRUCTION ACTIVITY INCLUDED IN THIS PLAN WILL INCLUDE:
 - CLEARING AND GRUBBING
 - ROUGH GRADING
 - FINAL GRADING
 - UTILITY INSTALLATION
 - PAVEMENT INSTALLATION
 - BUILDING CONSTRUCTION
- THE TOTAL ESTIMATED LAND AREA TO BE DISTURBED IS 1.5 ACRES.
- THE ESTIMATED RUNOFF COEFFICIENT UPON COMPLETION OF THE PROJECT IS 0.80.
- THE STORM WATER EXITING THE SITE IS COLLECTED IN AN EXISTING DRAINAGE SYSTEM MAINTAINED BY THE TOWN OF ADDISON, TEXAS.
- THE SOILS ON THE SITE ARE GENERALLY EXPANSIVE CLAYS.
- THE CONTRACTOR SHALL PROVIDE AND MAINTAIN EROSION PROTECTION AROUND THE WORK AREA PERIMETER AND AT ALL INLET MOUTHS PRIOR TO COMMENCING WORK AND UNTIL THE WORK AREA HAS BEEN STABILIZED.
- THE CONTRACTOR WILL REMOVE ALL EXCESS SOIL FROM CONSTRUCTION VEHICLES PRIOR TO EXITING THE SITE.
- ALL DISTURBED AREAS WHICH WILL NOT BE RE-DISTURBED FOR A MINIMUM OF 21 DAYS MUST BE STABILIZED BY THE CONTRACTOR TO CONTROL EROSION.
- THE CONTRACTOR SHALL UNDERTAKE PROPER METHODS TO REDUCE DUST GENERATION FROM THE SITE.
- THE CONTRACTOR MUST COMPLY WITH FEDERAL, STATE AND LOCAL REGULATIONS REGARDING SEDIMENT AND EROSION CONTROL.
- A COPY OF THIS PLAN MUST BE KEPT AT THE CONSTRUCTION FACILITY DURING THE ENTIRE CONSTRUCTION PERIOD.
- CONSTRUCTION SEQUENCING MUST PROVIDE FOR THE EXCAVATION OF AN ON-SITE BASIN AS A SEDIMENT COLLECTION BASIN PRIOR TO THE DISTURBANCE OF GREATER THAN 10 ACRES OF LAND.
- ALL FINISHED GRADES ARE TO BE HYDROMULCHED, SPOT SOODED OR SEEDED AND WATERED UNTIL GROWTH IS ESTABLISHED ON AND OFF-SITE.
- A PIT OR WASH OUT BASIN SHALL BE CONSTRUCTED ON-SITE BY THE CONTRACTOR FOR THE "WASH OUT" OF CONCRETE TRUCKS.
- A BERM OR OTHER SPILL PROTECTION MEASURE SHALL BE USED FOR ANY TEMPORARY FUEL STORAGE TANK ON SITE.
- IF "SUMP" PUMPS ARE USED TO REMOVE WATER FROM EXCAVATED AREAS, FILTER THE DISCHARGE TO REMOVE SEDIMENT AND OTHER POLLUTANTS BEFORE THE WATER LEAVES THE SITE.
- TO PREVENT DAMAGE TO VEGETATION IN DOWNSTREAM WATER COURSES, LIMIT ANY PROPOSED LINE STABILIZATION OPERATIONS TO THAT WHICH CAN BE MIXED AND COMPACTED BY THE END OF EACH WORK DAY. GEOTEXTILE FABRIC IS NOT EFFECTIVE IN FILTERING LINE SINCE THE GRAIN SIZE IS SMALLER THAN THE OPENING IN THE FABRIC.
- VEHICLE PARKING AREAS, STAGING AREAS, STOCKPILES, SPOILS, ETC. SHALL BE LOCATED SUCH THAT THEY WILL NOT ADVERSELY AFFECT STORM WATER QUALITY. OTHERWISE, COVERING OR ENFORCING THE AREAS WITH PROTECTIVE MEASURES SHALL BE NECESSARY.
- STORE ALL TRASH AND BUILDING MATERIALS WASTE IN AN ENCLOSURE UNTIL PROPER DISPOSAL AT OFF-SITE FACILITIES.
- CONTRACTOR IS TO USE DETENTION AREA AS TEMPORARY SILT BASINS DURING CONSTRUCTION.
- CONTRACTOR IS TO PROVIDE CONSTRUCTION ENTRANCE IF EXISTING PAVED ENTRANCE ARE NOT TO BE UTILIZED. SEE DETAILS IF REQUIRED.



LEGEND

B	BOLLARD
EM	ELECTRIC METER
PP	POWER POLE
LS	LIGHT STANDARD
WM	WATER METER
WV	WATER VALVE
ICV	IRRIGATION CONTROL VALVE
FH	FIRE HYDRANT
CO	CLEANOUT
MH	MANHOLE
GM	GAS METER
TSC	TRAFFIC SIGNAL CONTROL
TSP	TRAFFIC SIGNAL POLE
TELE	TELEPHONE BOX
TV	TV BOX
FP	FLAG POLE
SIGN	TRAFFIC SIGN
---	PROPERTY LINE
---	FENCE
---	EXIST. CONTOUR
---	PROPOSED CONTOUR
---	EROSION CONTROL DEVICE
---	STABILIZED CONSTRUCTION DEVICE
---	INLET PROTECTION

PK FILE: 2206-01.074

STATE OF TEXAS
 REGISTERED PROFESSIONAL ENGINEER
 STEVEN A. MARKUSSEN
 70990
 11/18/02

NO.	DATE	REVISION
1	11/18/2002	RECORD DRAWING

Pacheco Koch Consulting Engineers
 9401 LBJ FREEWAY SUITE 300 DALLAS, TEXAS 75243 972.235.3031

EROSION CONTROL PLAN
 NJ MALIN EXPANSION
 MIDWAY ROAD
 ADDISON, TEXAS

CITY OF ADDISON, TEXAS

DESIGN	DRAWN	DATE	SCALE	NOTES	FILE	NO.
CJE	JLM	JULY 03, 2001	1"=30'			C7.0

PK FILE: 2206-01.074

DWG FILE: C7.0 EROSION
 XREF FILE: ARCH.DWG