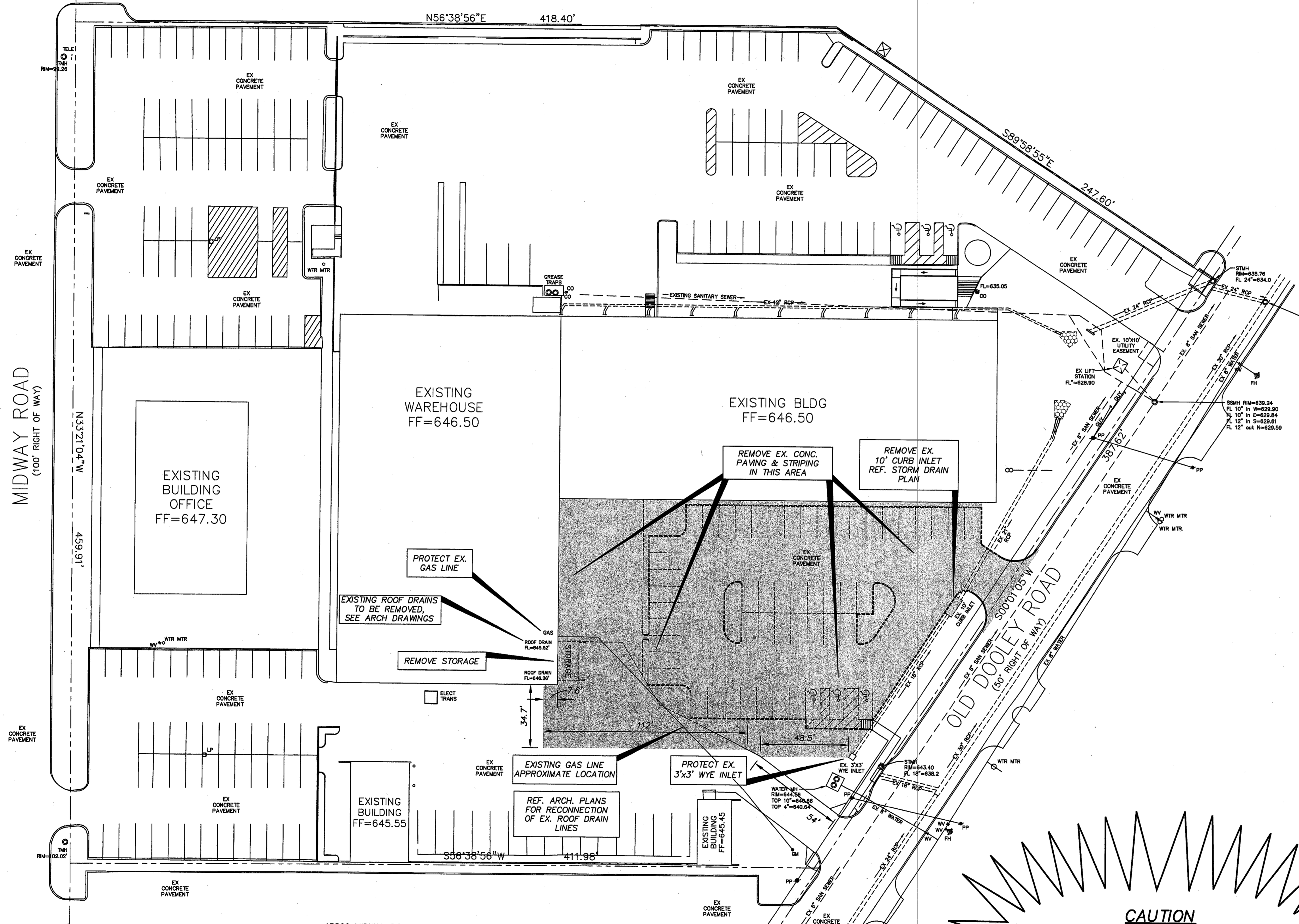
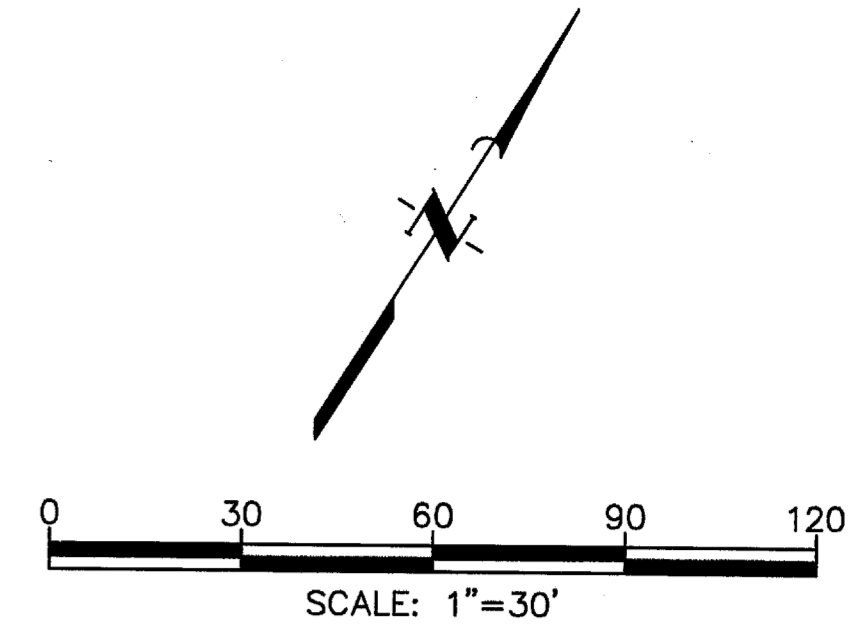


MIDWAY PARK NORTH II  
LOT 1  
(VOL. 83035, PG. 1180)



**LEGEND**

- EX. 18" ROP ---
  - EXISTING STORM MANHOLE
  - EX. 8" SAN. SEWER-
  - EX. 8" WATER
  - × WV
  - ◆ FH
  - GM
  - PP ---
  - PROPOSED DEMOLITION AREA
- EX. 18" ROP ---
  - EXISTING STORM MANHOLE
  - EX. 8" SAN. SEWER-
  - EX. 8" WATER
  - × WV
  - ◆ FH
  - GM
  - PP ---
  - PROPOSED DEMOLITION AREA

**DEMOLITION GENERAL NOTES:**

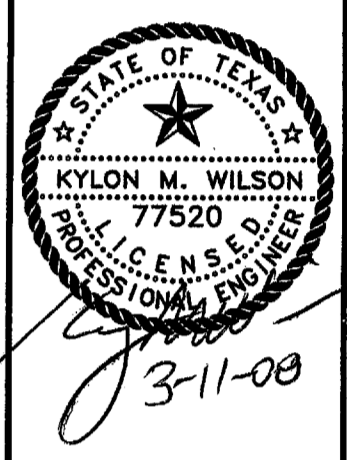
1. REVIEW ALL GENERAL NOTES
2. REMOVE ALL EXISTING PAVEMENT AND STRUCTURES WITHIN THE SHADED AREA UNLESS OTHERWISE NOTED.
3. SAWCUT AND REMOVE ALL EXISTING DRIVE APPROACHES THAT ARE SHADED 2 FEET FROM THE BACK OF CURB.
4. CONSULT THE DIMENSIONAL CONTROL PLAN, VERIFY THE PORTION OF EXISTING CONCRETE CURBS WHICH ARE TO REMAIN.
5. COORDINATE WITH TXU, SOUTHWESTERN BELL TELEPHONE, AND THE LOCAL CABLE COMPANY PRIOR TO THE REMOVAL AND/OR RELOCATION OF EXISTING UTILITIES.
6. ALL UTILITIES SHOULD BE CUT AND PLUGGED IN COORDINATION WITH THEIR RESPECTIVE UTILITY COMPANIES PRIOR TO THE DEMOLITION OF EXISTING BUILDINGS.
7. CONTRACTOR TO PLUG ALL EXPOSED ENDS OF ABANDONED UTILITIES.
8. CONTRACTOR TO DETERMINE SOURCE OF ALL EXPOSED UTILITIES AND IF REQUIRED, RECONNECT TO PROPOSED UTILITIES.

**CAUTION**  
CONTRACTOR TO VERIFY LOCATION  
AND SIZE OF ALL EXISTING UTILITIES  
PRIOR TO CONSTRUCTION

**BENCHMARK LIST:**

1. STD. SQUARE CUT IN THE MIDDLE OF A DOUBLE STORM INLET ON THE WEST SIDE OF OLD DOOLEY ROAD: APPROXIMATELY 100' NORTH OF THE POINT OF BEGINNING NORTH EAST PROPERTY CORNER
2. ALUMINUM DISK SET IN CONCRETE STAMPED "ARP 2 ADS" LOCATED ON THE ADDISON AIRPORT, APPROXIMATELY 400' EAST OF THE CONTROL TOWER. ELEV.=570.88

NO.	DATE	REVISIONS	COMMENT



TRC ENGINEERS, INC.  
6115 Comp Bowie Blvd., Suite 201, Fort Worth, Texas 76116-5500  
PHONE (817) 335-5065 • FAX (817) 335-5067

**DEMOLITION PLAN**  
NJ MAIN ADDITION  
ADDISON, TEXAS

DATE: JANUARY 2008	SCALE: 1"=30'	DESIGN BY: MGP	DRAWN BY: MEB
SHEET NO. 2	SHEET NO. OF 9	JOB NUMBER: 152111	SHEET ID: NJ MAIN DEMO PLAN