

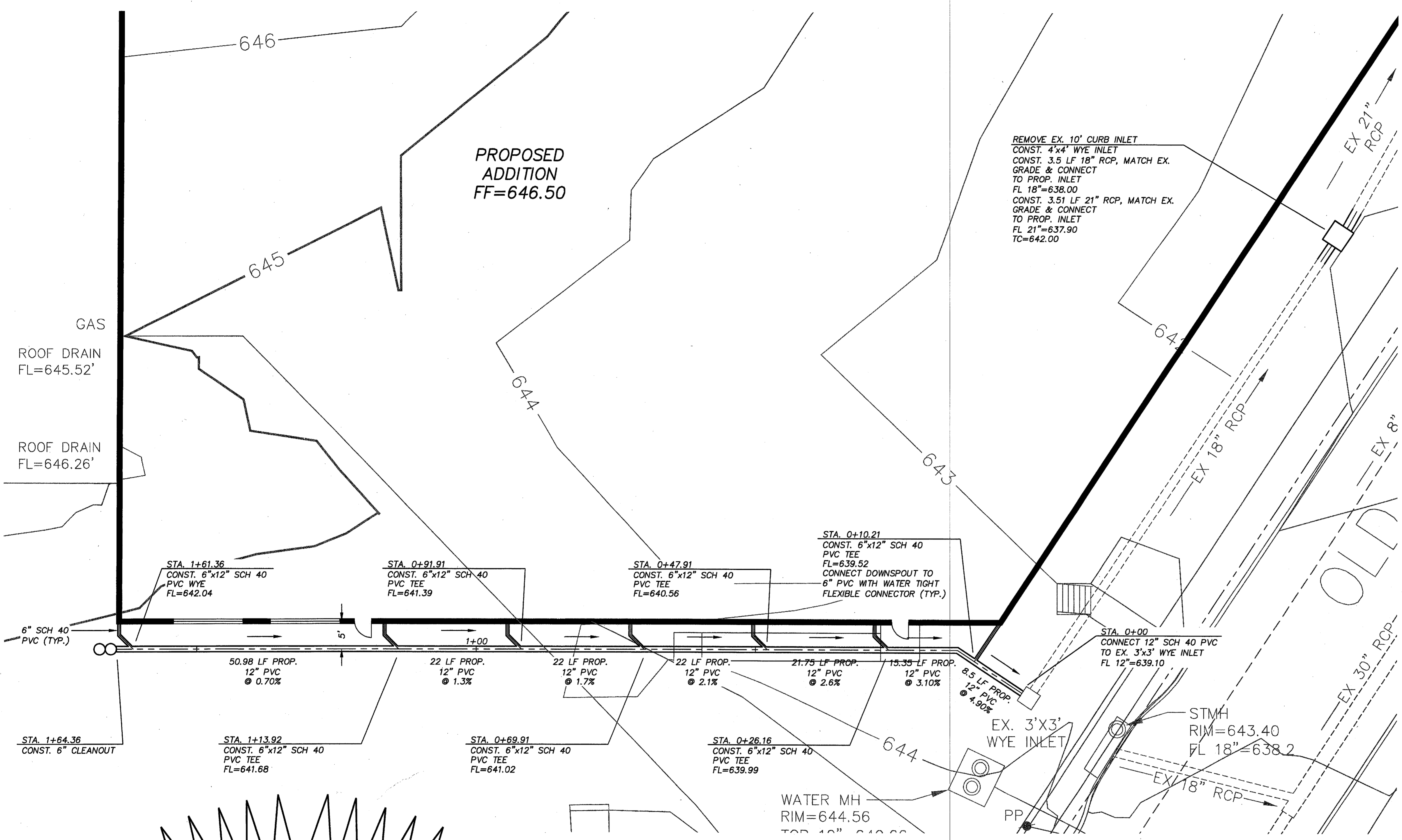
LEGEND

- 640 —— EXISTING 10' CONTOUR
- 641 —— EXISTING 1' CONTOUR
- EX 18" RCP —— EXISTING STORM LINE
- EXISTING STORM MANHOLE
- EX. 8" SAN SEWER — EXISTING SANITARY SEWER LINE
- CO EXISTING SANITARY CLEANOUT
- CO EX. 8" WATER EXISTING WATER LINE
- ⊗ WV EXISTING WATER VALVE
- ⊗ FH EXISTING FIRE HYDRANT
- ⊗ GM EXISTING GAS METER
- EXISTING POWER POLE WITH OVERHEAD ELECTRIC
- ==== PROPOSED STORM DRAIN
- PROPOSED INLET
- PROPOSED DIRECTION OF FLOW

REF. DRAINAGE AND GRADING PLAN FOR GENERAL NOTES AND SPECIFICATIONS.

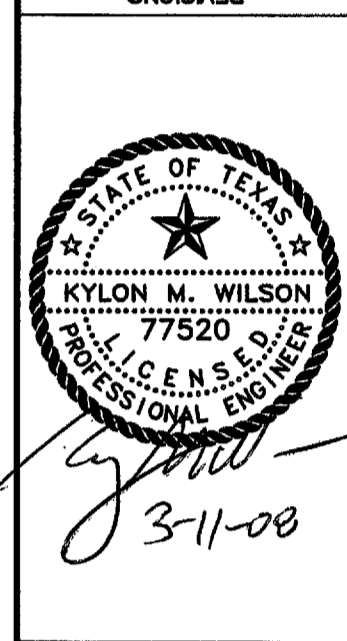
BENCHMARK LIST:

- STD. SQUARE CUT IN THE MIDDLE OF A DOUBLE STORM INLET ON THE WEST SIDE OF OLD DOOLEY ROAD; APPROXIMATELY 100' NORTH OF THE POINT OF BEGINNING NORTH EAST PROPERTY CORNER
- ALUMINUM DISK SET IN CONCRETE STAMPED "ARP 2 ADS" LOCATED ON THE ADDISON AIRPORT, APPROXIMATELY 400' EAST OF THE CONTROL TOWER. ELEV.=570.88



CAUTION
CONTRACTOR TO VERIFY LOCATION AND SIZE OF ALL EXISTING UTILITIES PRIOR TO CONSTRUCTION

NO.	DATE	COMMENT



CTRC
TRC ENGINEERS, INC.
6115 Camp Bowie Blvd., Suite 200, Fort Worth, Texas 76116-5500
PHONE (817) 335-5065 • FAX (817) 335-5067

STORM DRAIN PLAN
NJ MALIN ADDITION
ADDISON, TEXAS

DATE: JANUARY 2008	SCALE: 1"=10'
DESIGN BY: MGF	DRAWN BY: MEB
SHEET NO. 5	JOB NUMBER: 152111
SHEET OF 5	DATE: 1/23/08