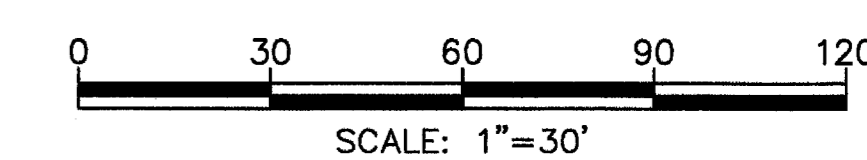
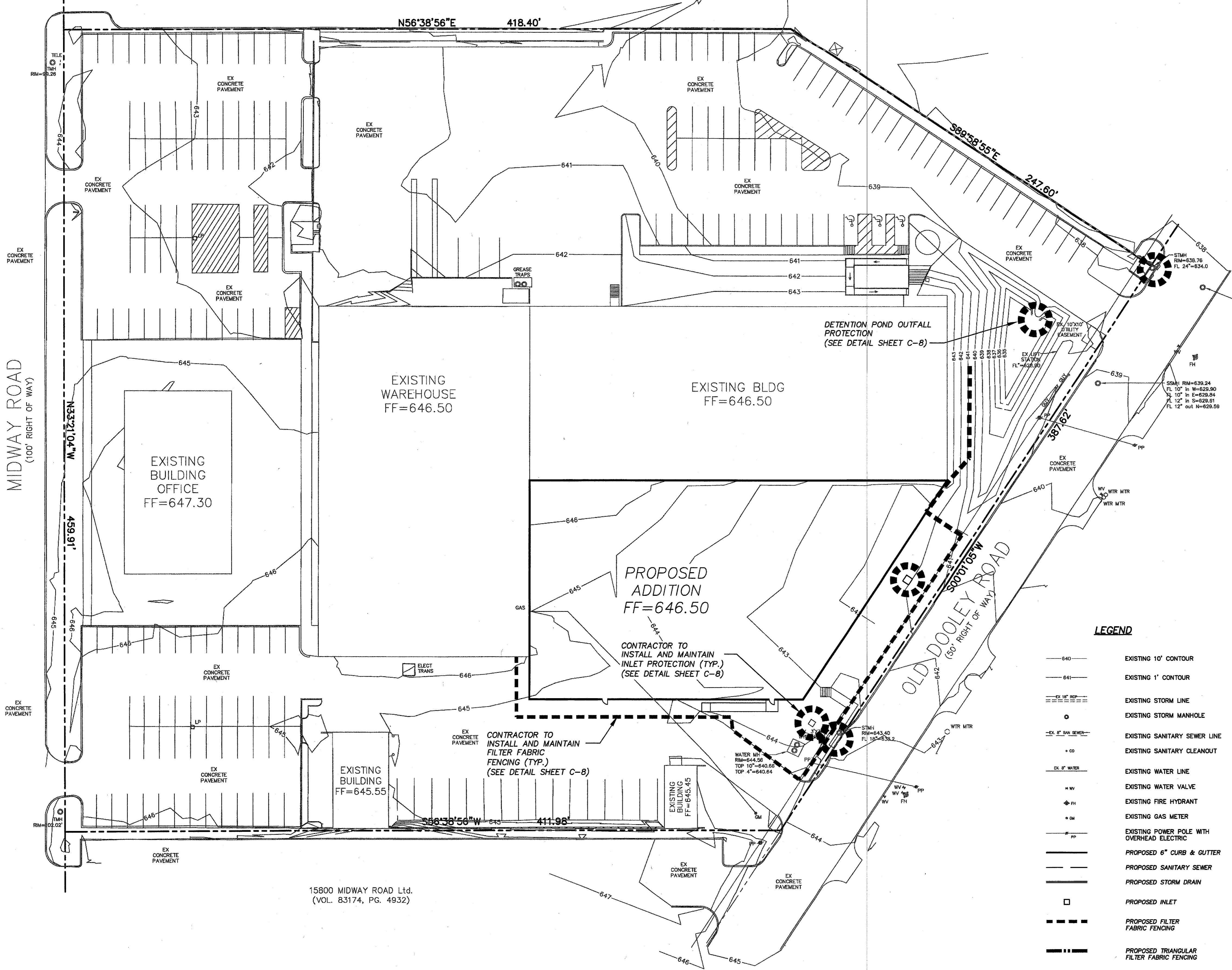


MIDWAY PARK NORTH II
LOT 1
(VOL. 83035, PG. 1180)



MIDWAY ROAD
(100' RIGHT OF WAY)



EROSION CONTROL GENERAL NOTES:

1. THIS PLAN HAS BEEN PREPARED TO PROVIDE MEANS TO MINIMIZE POLLUTION OF STORM.
2. THE CONSTRUCTION ACTIVITY INCLUDED THIS PLAN WILL INCLUDE:
A. CLEARING AND GRUBBING
B. ROUGH GRADING
C. FINAL GRADING
D. UTILITY INSTALLATION
E. PAVEMENT INSTALLATION
F. BUILDING CONSTRUCTION
3. THE TOTAL ESTIMATED LAND AREA TO BE DISTURBED IS 0.659 ACRES.
4. THE ESTIMATED RUNOFF COEFFICIENT UPON COMPLETION OF THE PROJECT IS 0.80.
5. THE STORM WATER EXITING THE SITE IS COLLECTED IN AN EXISTING DRAINAGE SYSTEM MAINTAINED BY THE TOWN OF ADDISON, TEXAS.
6. THE SOILS ON THE SITE ARE GENERALLY EXPANSIVE CLAYS.
7. THE CONTRACTOR SHALL PROVIDE AND MAINTAIN EROSION PROTECTION AROUND THE WORK AREA PERIMETER AND AT ALL INLET MOUTHS PRIOR TO COMMENCING WORK AND UNTIL THE WORK AREA HAS BEEN STABILIZED.
8. THE CONTRACTOR WILL REMOVE ALL EXCESS SOIL FROM CONSTRUCTION VEHICLES PRIOR TO EXITING.
9. ALL DISTURBED AREA WHICH WILL NOT BE REDISTRIBUTED FOR A MINIMUM OF 21 DAYS MUST BE STABILIZED BY THE CONTRACTOR TO CONTROL EROSION.
10. THE CONTRACTOR SHALL UNDERTAKE PROPER METHODS TO REDUCE DUST GENERATION FROM THE SITE.
11. THE CONTRACTOR MUST COMPLY WITH FEDERAL, STATE AND LOCAL REGULATIONS REGARDING SEDIMENT AND EROSION CONTROL.
12. A COPY OF THIS PLAN MUST BE KEPT AT THE CONSTRUCTION FACILITY DURING THE ENTIRE CONSTRUCTION PERIOD.
13. CONSTRUCTION SEQUENCING MUST PROVIDE FOR THE EXCAVATION OF AN ON-SITE BASIN AS A SEDIMENT COLLECTION BASIN PRIOR TO THE DISTURBANCE OF GREATER THAN 10 ACRES OF LAND.
14. ALL FINISHED GRADES ARE TO BE HYDROMULCHED, SPOT SODDED OR SEEDED AND WATERED UNTIL GROWTH IS ESTABLISHED ON AND OFF-SITE.
15. A PIT OR WASH OUT BASIN SHALL BE CONSTRUCTED ON-SITE BY THE CONTRACTOR FOR THE "WASH OUT" OF CONCRETE TRUCKS.
16. A BERM OR OTHER SPILL PROTECTION MEASURE SHALL BE USED FOR ANY TEMPORARY FUEL STORAGE TANK.
17. IF "SUMP" PUMPS ARE USED TO REMOVE WATER FROM EXCAVATED AREAS, FILTER THE DISCHARGE TO REMOVE SEDIMENT AND OTHER POLLUTANTS BEFORE THE WATER LEAVES THE SITE.
18. TO PREVENT DAMAGE TO VEGETATION IN DOWNSTREAM WATER COURSES, LIMIT ANY PROPOSED LIME STABILIZATION OPERATIONS TO THAT WHICH CAN BE MIXED AND COMPACTED BY THE END OF EACH WORK DAY. GEOTEXTILE FABRIC IS NOT EFFECTIVE IN FILTERING LIME SINCE THE GRAIN SIZE IS SMALLER THAN THE OPENING IN THE FABRIC.
19. VEHICLE PARKING AREAS, STAGING AREAS, STOCKPILES, SPOILS, ETC. SHALL BE LOCATED SUCH THAT THEY WILL NOT ADVERSELY AFFECT STORM WATER QUALITY. OTHERWISE, COVERING OR ENCIRCLING THE AREAS WITH PROTECTIVE MEASURES SHALL BE NECESSARY.
20. STORE ALL TRASH AND BUILDING MATERIALS WASTE IN AN ENCLOSURE UNTIL PROPER DISPOSAL AT OFF-SITE FACILITIES.
21. CONTRACTOR IS TO USE DETENTION AREA AS TEMPORARY SILT BASIN DURING CONSTRUCTION.
22. CONTRACTOR IS TO PROVIDE CONSTRUCTION ENTRANCE IF EXISTING PAVED ENTRANCES ARE NOT TO BE UTILIZED. SEE DETAILS IF REQUIRED.

LEGEND

- 640 — EXISTING 10' CONTOUR
- 641 — EXISTING 1' CONTOUR
- — — — — EXISTING STORM LINE
- EXISTING STORM MANHOLE
- EX. 6" SAN SEWER
- EX. 6" WATER
- EX. WATER VALVE
- EX. FIRE HYDRANT
- EX. GAS METER
- EX. POWER POLE WITH OVERHEAD ELECTRIC
- — — — — PROPOSED 6" CURB & GUTTER
- — — — — PROPOSED SANITARY SEWER
- — — — — PROPOSED STORM DRAIN
- PROPOSED INLET
- — — — — PROPOSED FILTER FABRIC FENCING
- — — — — PROPOSED TRIANGULAR FILTER FABRIC FENCING
- ⊗ PROPOSED INLET PROTECTION DEVICE

COMMENT

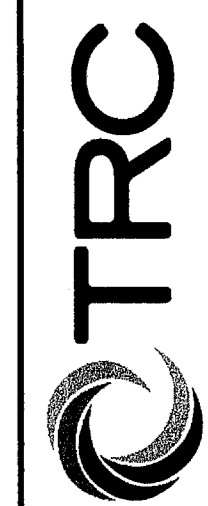
DATE

NO.

REVISIONS



3-11-08



TRC ENGINEERS, INC.
6115 Camp Bowie Blvd., Suite 200, Fort Worth, Texas 76116-5500
PHONE (817) 335-5065 • FAX (817) 335-5067

EROSION CONTROL PLAN
NJ MALIN ADDITION
ADDISON, TEXAS

DATE: JANUARY 2008	SCALE: 1"=30'
DESIGN BY: MFB	DRAWN BY: MFB
SHEET NO. 7	JOB NUMBER: 152111
SHEET ID: 9	
PROJECT: NJ MALIN EROSION CONTROL & DETAILS	

C-7