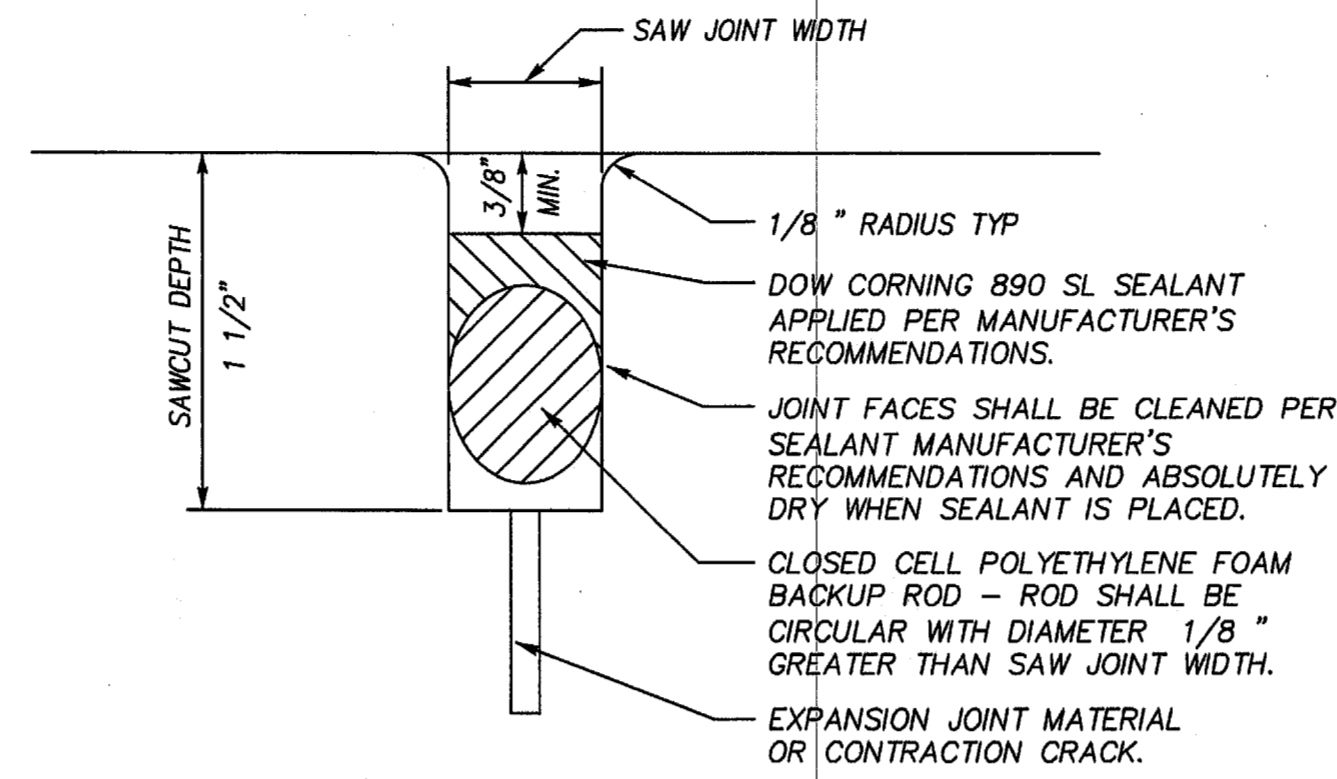


EXISTING TO NEW PAVEMENT CONNECTION
DETAIL

NTS

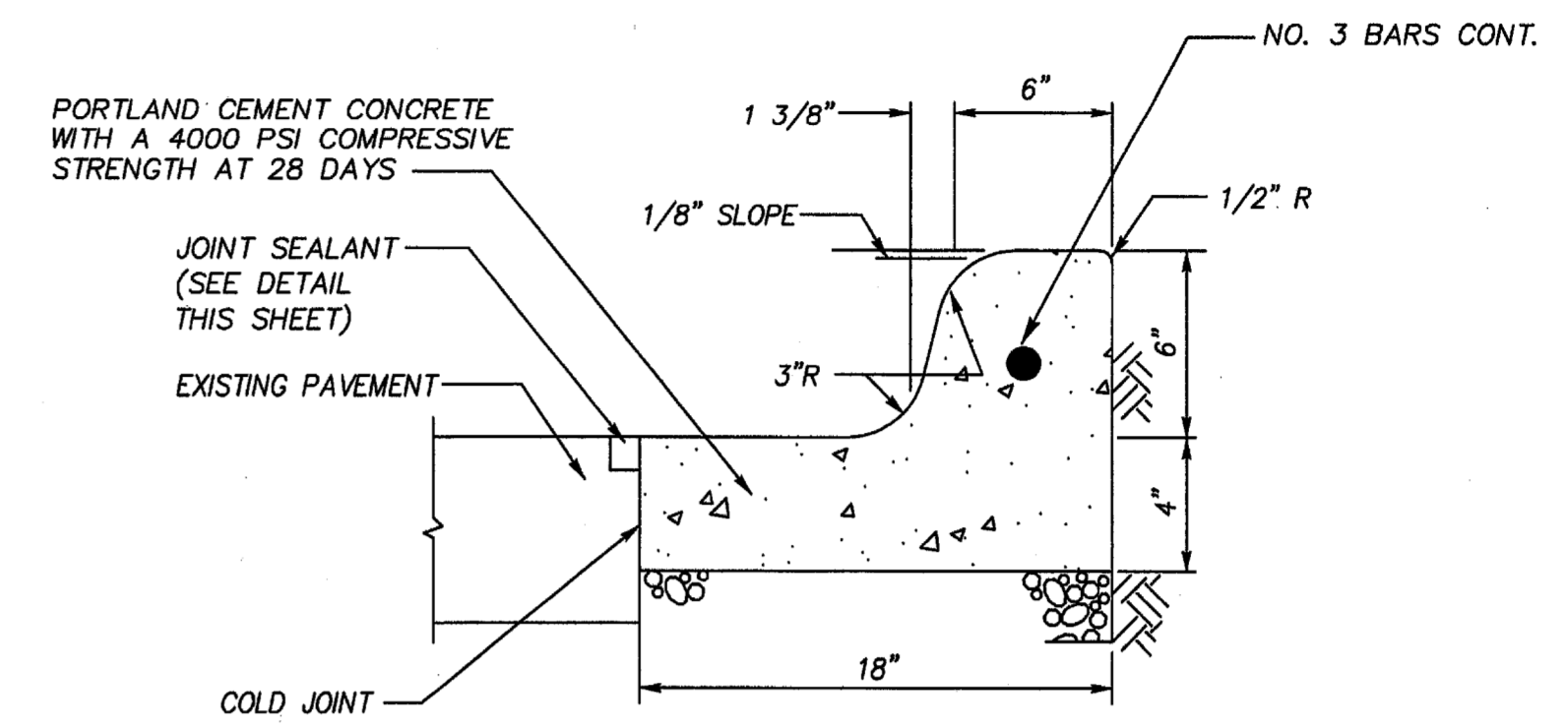


DETAIL NOTES:

1. WHEN PLACING SEALANT IN EXPANSION JOINT, POLYETHYLENE BOND BREAKER TAPE SHALL BE ON TOP OF THE PREMOLDED EXPANSION JOINT IN LIEU OF BACKUP ROD.

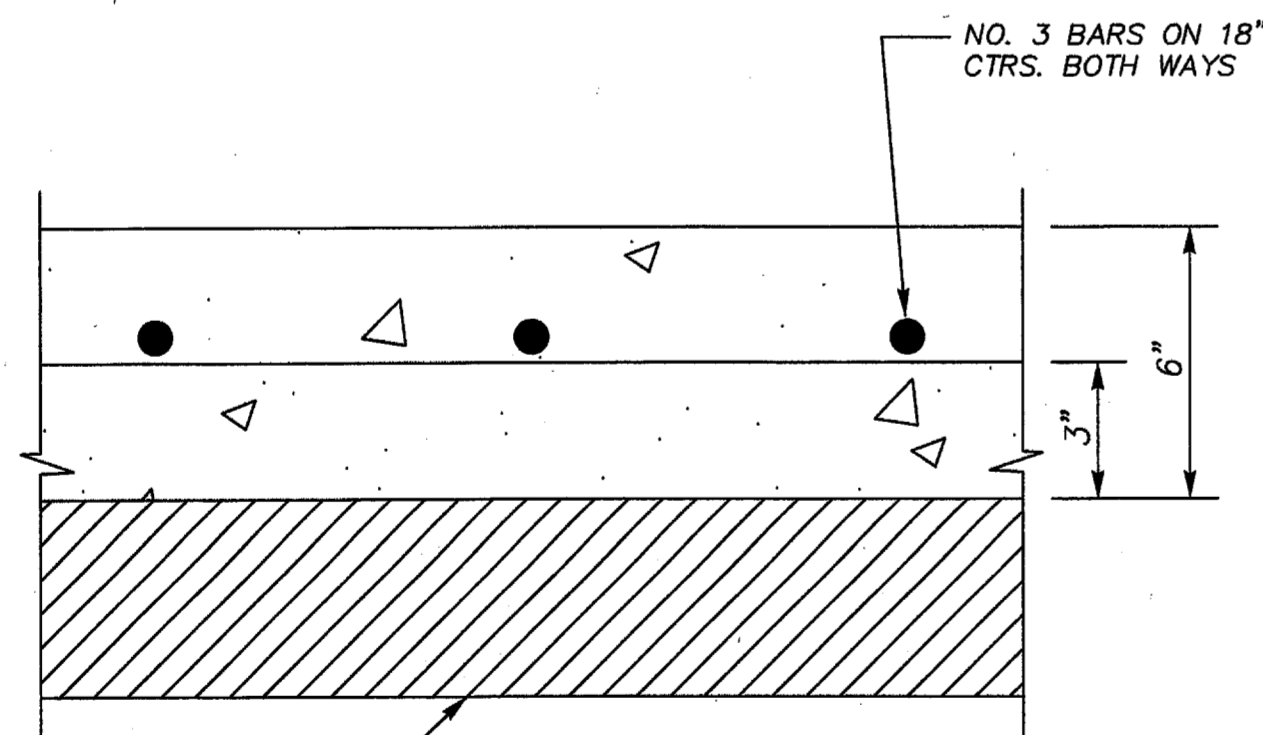
JOINT SEALANT
DETAIL

NTS



STANDARD CURB DETAIL

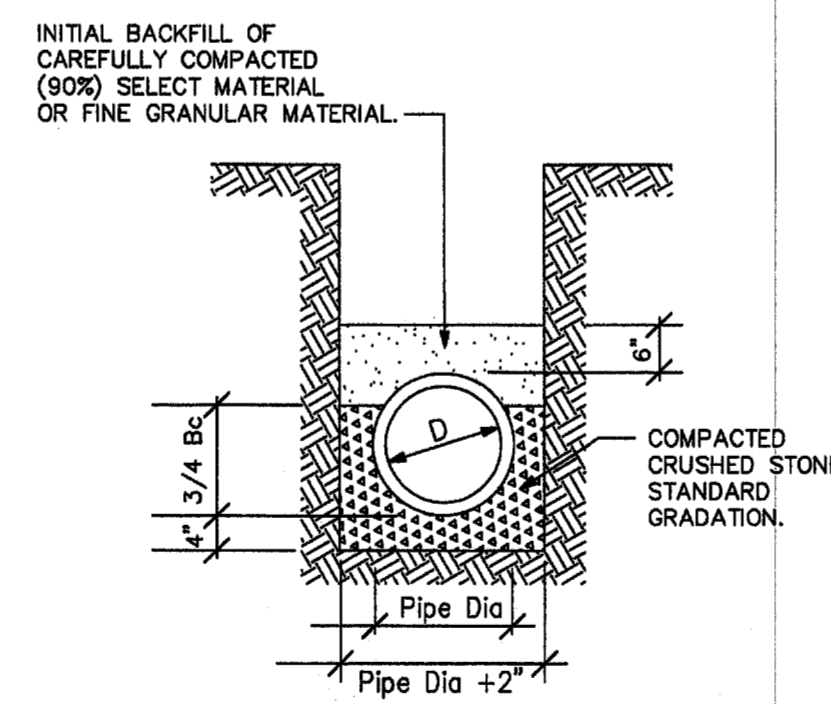
NTS



SCARIFY AND COMPACT SUBGRADE BETWEEN 95% AND 105% MAX. DRY DENSITY (STD. PROCTOR) AT A MOISTURE CONTENT BETWEEN OPTIMUM AND 5% ABOVE OPTIMUM.

PAVEMENT SECTION

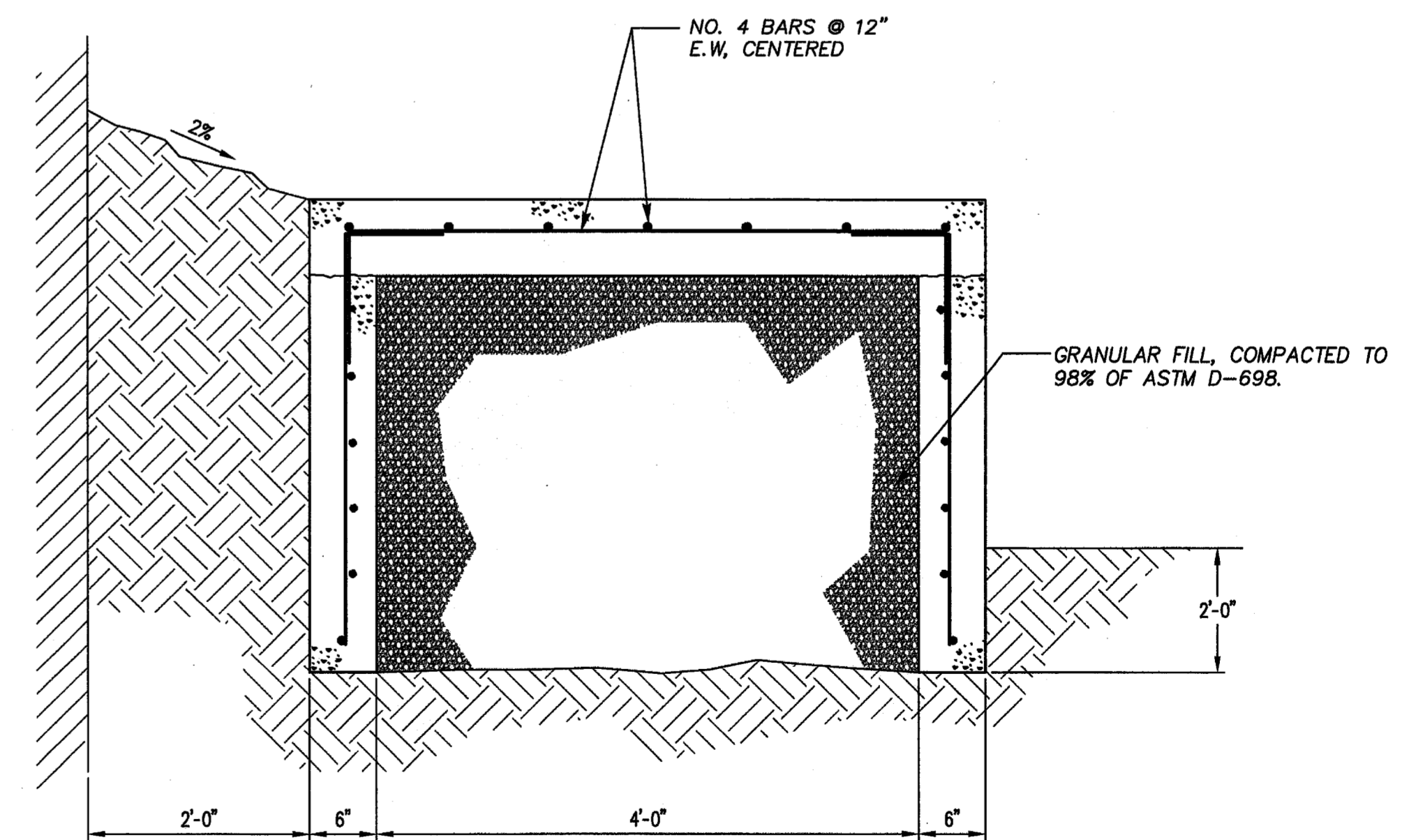
NTS



NOTE: All select material shall be compacted to 95% density when under pavement.

SEWER EMBEDMENT DETAILS

NOT TO SCALE



ACCESS/EGRESS RAMP SECTION

NTS

COMMENT

DATE

NO.

REVISIONS



3-11-08



TRC ENGINEERS, INC.
6115 Camp Bowie Blvd., Suite 200, Fort Worth, Texas 76116-5500
PHONE (817) 335-5065 • FAX (817) 335-5067

PAVING & MISCELLANEOUS
DETAILS
NJ MALIN ADDITION
ADDISON, TEXAS

DATE:	SCALE:	DESIGN BY:	DRAWN BY:
JANUARY 2008	NTS	MEB	MEB
SHEET NO. 9	JOB NUMBER:	SHEET NO. 9	
OF 9	152111	OF 9	
SHEET ID: NJ MALIN EROSION CONTROL & DETAILS			
© COPYRIGHT TRC 2007			