

CONSTRUCTION PLANS FOR NJ MALIN EXPANSION 5.485 ACRES CITY OF ADDISON, DALLAS COUNTY, TEXAS

PREPARED FOR



811 N. CENTRAL EXPRESSWAY, SUITE 229
RICHARDSON, TEXAS 75081
972-788-4084

OWNER/DEVELOPER



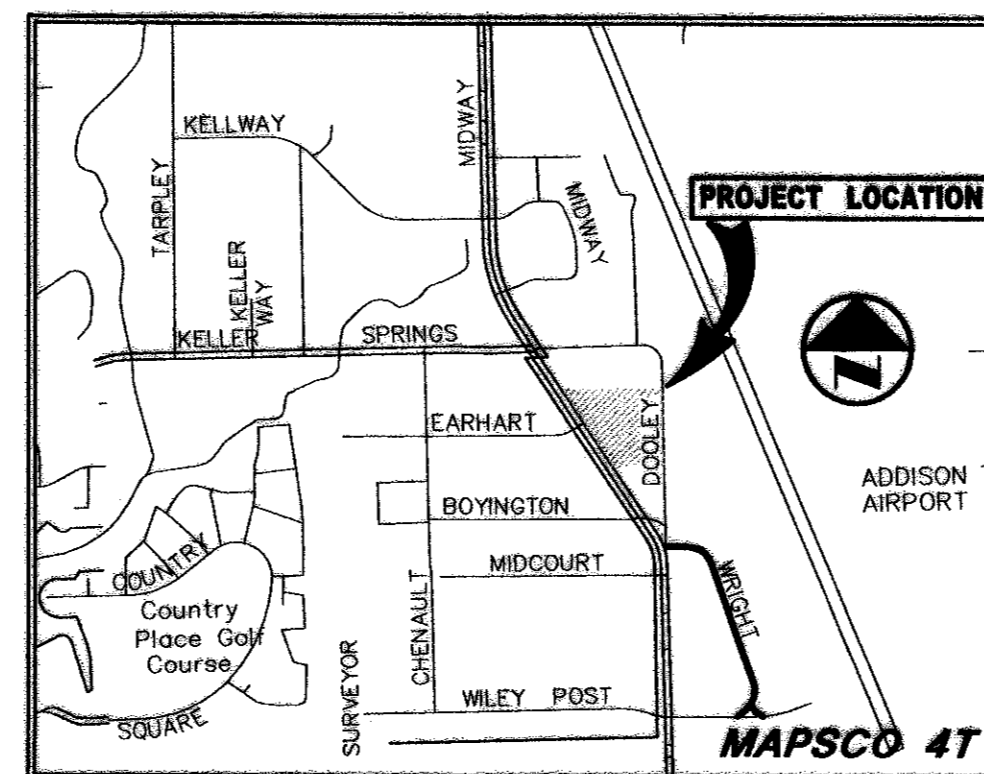
15870 MIDWAY ROAD
ADDISON, TEXAS 75001
972-458-2680

PREPARED BY



Pacheco Koch Consulting Engineers

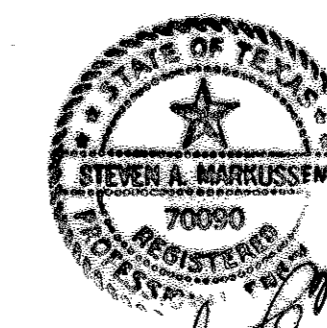
9401 LBJ FREEWAY SUITE 300 DALLAS, TEXAS 75243 972.235.3031



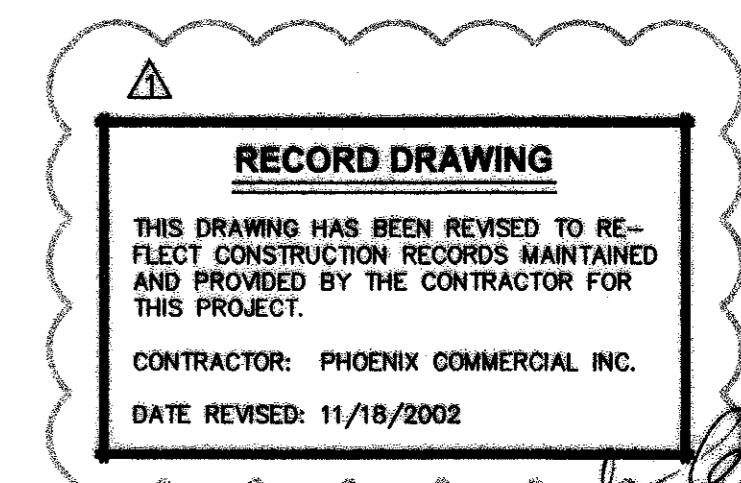
VICINITY MAP

DRAWING SHEET INDEX

SHEET	DESCRIPTION
C1.0	DEMOLITION PLAN
C2.0	DIMENSIONAL CONTROL PLAN
C3.0	GRADING PLAN
C4.0	STORM SEWER PLAN
C5.0	WATER & SANITARY SEWER PLAN
C6.0	PAVING PLAN
C7.0	EROSION CONTROL PLAN



Steven A. Marrussek
11/18/02



Steven A. Marrussek
11/18/02

B19-3

15870 MIDWAY Rd. NJ MALIN EXPANSION 2002 Record Set B19-

M:\DWG-22\2208-01.074\COVER SHEET.DWG