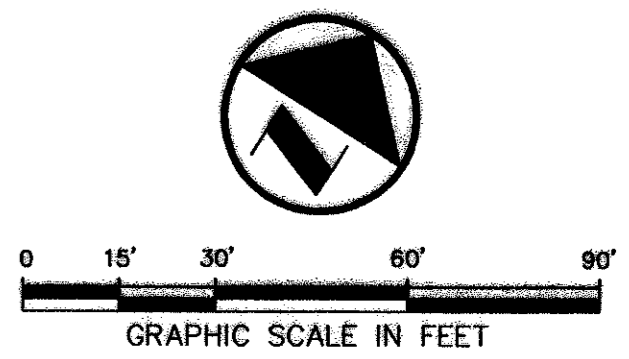


**BENCH MARK LIST:**  
 BM #1 ALUMINUM DISK SET IN CONCRETE STAMPED "ARP 2 ADS",  
 LOCATED ON THE ADDISON AIRPORT, APPROXIMATELY 400'  
 EAST OF THE CONTROL TOWER  
 ELEV=570.88

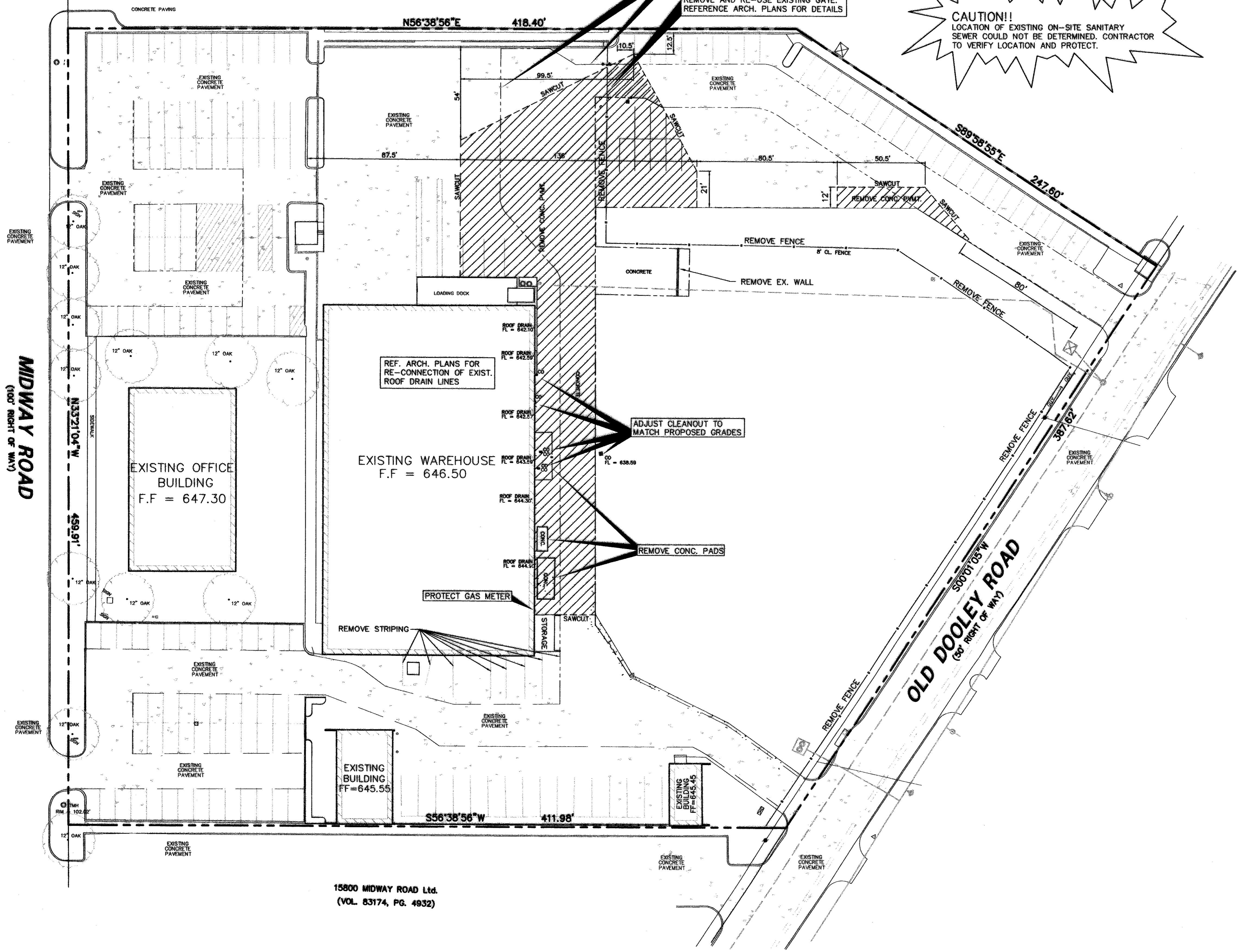
MIDWAY PARK NORTH II  
 (VOL. 83035, PG. 1180)  
 LOT 1



**LEGEND**

- B. BOLLARD
- EM ELECTRIC METER
- PP POWER POLE
- LS LIGHT STANDARD
- WM WATER METER
- WV WATER VALVE
- ICV IRRIGATION CONTROL VALVE
- FH FIRE HYDRANT
- CO CLEANOUT
- MH MANHOLE
- GM GAS METER
- TSC TRAFFIC SIGNAL CONTROL
- TSP TRAFFIC SIGNAL POLE
- TEL TELEPHONE BOX
- TV TV BOX
- FP FLAG POLE
- SN TRAFFIC SIGN
- PROPERTY LINE
- - - FENCE
- /// FULL DEPTH SAWCUT AND REMOVE EXISTING PAVEMENT

**CAUTION!!**  
 LOCATION OF EXISTING ON-SITE SANITARY  
 SEWER COULD NOT BE DETERMINED. CONTRACTOR  
 TO VERIFY LOCATION AND PROTECT.



**DEMOLITION NOTES**

1. REVIEW ALL GENERAL NOTES.
2. REMOVE ALL EXISTING PAVEMENT AND STRUCTURES WITHIN THE SHADED AREA UNLESS OTHERWISE NOTED.
3. SAWCUT AND REMOVE ALL EXISTING DRIVE APPROACHES THAT ARE SHADED 2 FEET FROM THE BACK OF CURB.
4. CONSULT THE DIMENSIONAL CONTROL PLAN, VERIFY THE PORTION OF EXISTING CONCRETE CURBS WHICH ARE TO REMAIN.
5. COORDINATE WITH TDXI, SOUTHWESTERN BELL TELEPHONE, AND THE LOCAL CABLE COMPANY PRIOR TO THE REMOVAL AND/OR RELOCATION OF EXISTING UTILITIES.
6. ALL UTILITIES SHOULD BE CUT AND PLUGGED IN COORDINATION WITH THEIR RESPECTIVE UTILITY COMPANIES AND PRIOR TO THE DEMOLITION OF THE EXISTING BUILDINGS.
7. CONTRACTOR TO PLUG ALL EXPOSED ENDS AND ABANDONED UTILITIES.
8. CONTRACTOR TO DETERMINE SOURCE OF ALL EXPOSED UTILITIES AND IF REQUIRED, RECONNECT TO PROPOSED UTILITIES.

**RECORD DRAWING**  
 THIS DRAWING HAS BEEN REVISED TO RE-  
 FLECT CONSTRUCTION RECORDS MAINTAINED  
 AND PROVIDED BY THE CONTRACTOR FOR  
 THIS PROJECT.  
 CONTRACTOR: PHOENIX COMMERCIAL INC.  
 DATE REVISED: 11/18/2002

15800 MIDWAY ROAD Ltd.  
 (VOL. 83174, PG. 4932)



NO.		DATE		REVISION	
11/18/2002		RECORD DRAWING			
<b>Pacheco Koch Consulting Engineers</b>					
9401 LBJ FREEWAY SUITE 300 DALLAS, TEXAS 75243 972.235.3031					
<b>DEMOLITION PLAN</b>					
<b>NJ MALIN EXPANSION</b>					
<b>MIDWAY ROAD</b>					
<b>ADDISON, TEXAS</b>					
<b>CITY OF ADDISON, TEXAS</b>					
DESIGN	DRAWN	DATE	SCALE	NOTES	FILE NO.
CJE	JLM	JULY 03, 2001	1"=30'		<b>C1.0</b>