

SITE IMPROVEMENT PLANS

for the

THOMAS DEVELOPMENTS

15980 MIDWAY ROAD

2.16 Acres of the

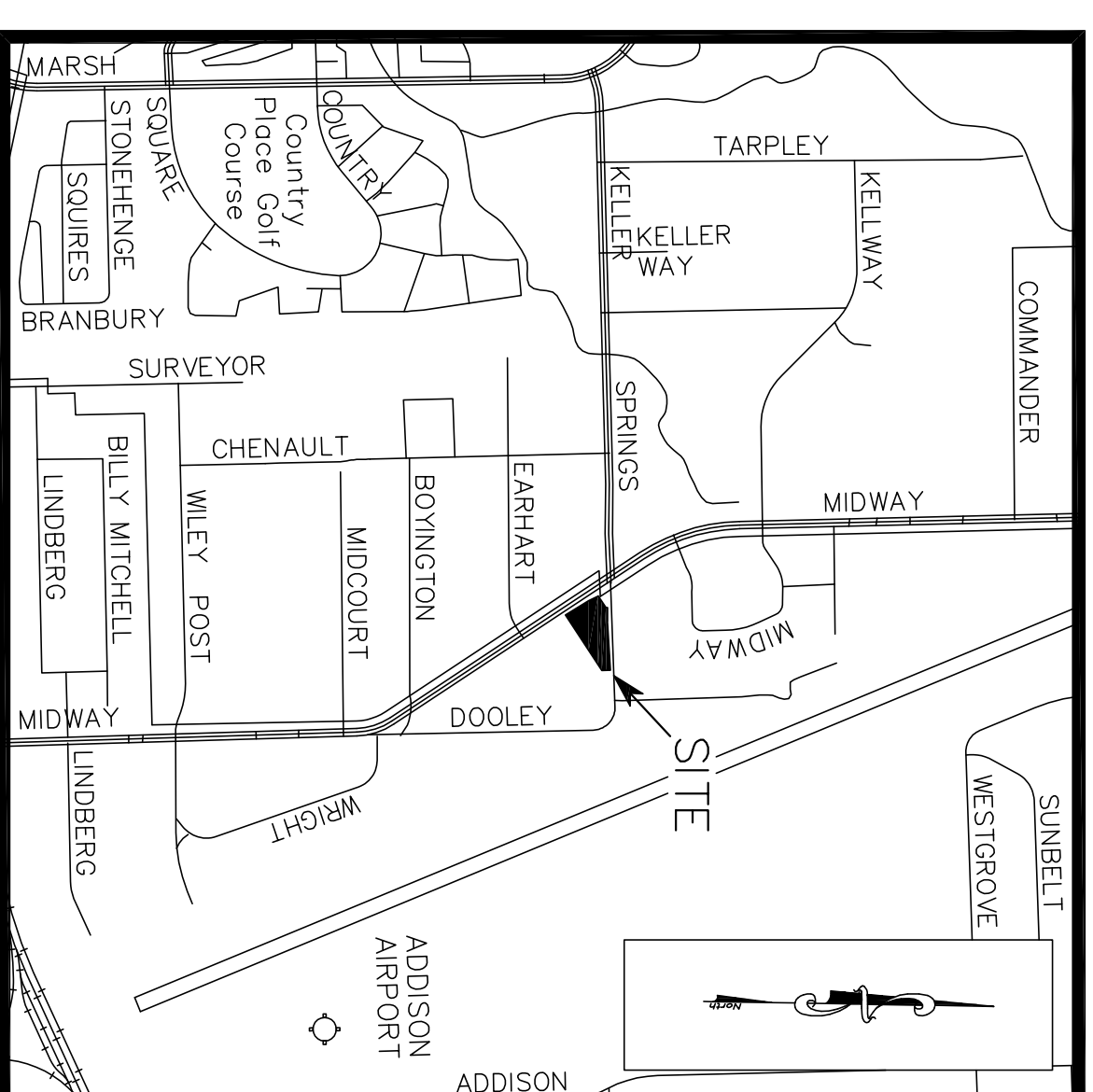
THOMAS DEVELOPMENTS

Block 1, Lots 1 & 2

Town of Addison

Dallas County, Texas

PW #2007-016



Location Map

NOT TO SCALE

DEVELOPER:

TOM SPAGNOLA

3211 Valley Forge Drive, McKinney, Texas 75070

(972) 926-8086 Fax (972) 481-1640

MONK CONSULTING ENGINEERS, INC.

GERALD E. MONK, P.E.

1200 W. State Street ~ Garland Texas 75040 (972) 272-1763 Fax (972) 272-8761

jerry@monkconsulting.com

INDEX

SHEET NO.	DESCRIPTION
C100	Cover Sheet
C101	Plat
C102	Site & Dimension Control Plan
C103	Site Utility Plan
C104	Local Drainage Area Map
C105	Grading & Drainage Plan
PL001	Erosion Control Plan
PL002	Landscape Plan
D101	Irrigation Plan
D102	Site Details BMP Details

SUBMITTAL DATE:

1 st	12/17/07
2 nd	3/24/08
3 rd	4/16/08
4 th	8/13/08

AS-BUILT
OCTOBER 27, 2009
GERALD E. MONK, P.E.

INFORMATION SHOWN ON THESE PLANS WAS FURNISHED BY THE CONSULTANT FOR THE ACCURACY BELONGS TO THE CONSULTANT.

NO.	REVISIONS/CORRECTIONS DESCRIPTION	REVISER(S) ADD(A) SH. #S	DATED
1	city plan review comments	(R) ALL	12/18/07
2	city plan review comments	(R) ALL	3/25/08