

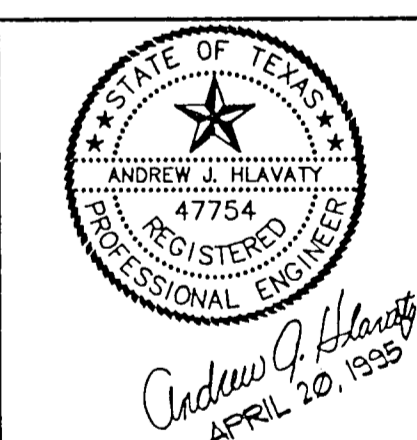
ANDY HLAVATY & ASSOC.

CONSULTANT ENGINEERS

9221 LBJ
Suite 203
Dallas, Texas
75243
(214) 783-0122

IZZARELLI-HISAW
GENERAL CONSTRUCTION, INC.
3050 REGENT BLVD.
SUITE 130
IRVING, TEXAS 75063 (214) 556-1333

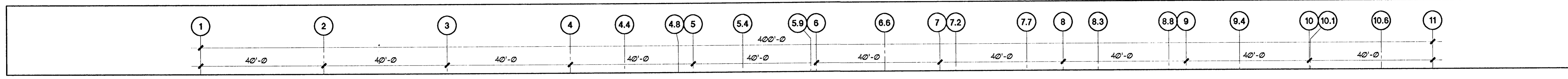
PROPOSED FACILITY FOR:
BAS REALTY
LIMITED PARTNERSHIP



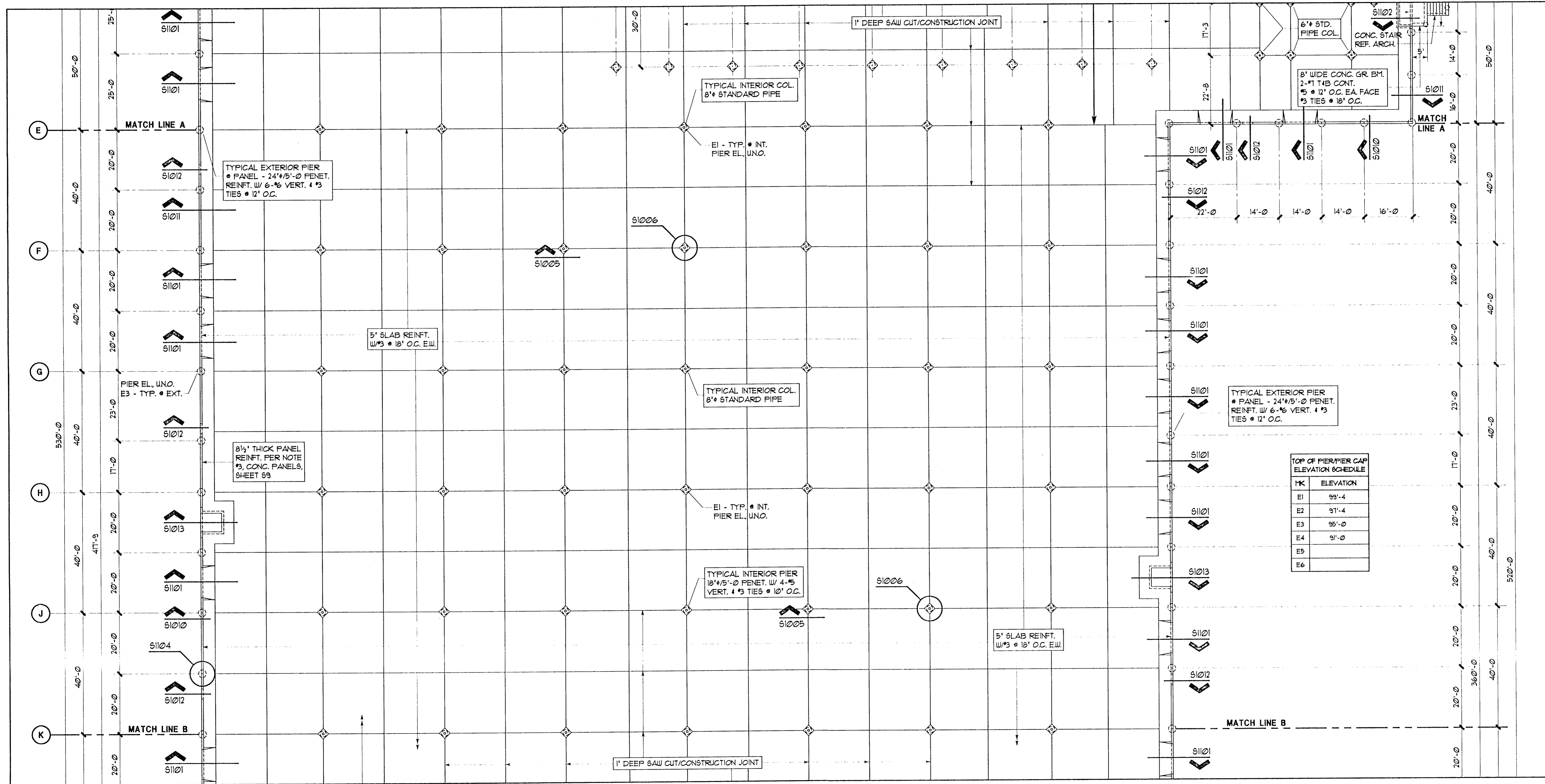
DATE: APRIL 20, 1995
JOB NO: 00994
REV. DATE _____
REV. DATE _____
REV. DATE _____

SHEET:

S2
OF 13

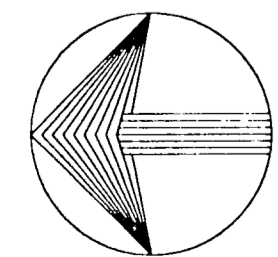


REFER TO SHEET S1 FOR CONTINUATION OF FOUNDATION PLAN.



MARK	ELEVATION
E1	99'-4"
E2	97'-4"
E3	95'-0"
E4	91'-0"
E5	
E6	

REFER TO SHEET S3 FOR CONTINUATION OF FOUNDATION PLAN.



01 PARTIAL FOUNDATION PLAN - B

SCALE: 1/16" = 1'-0"

