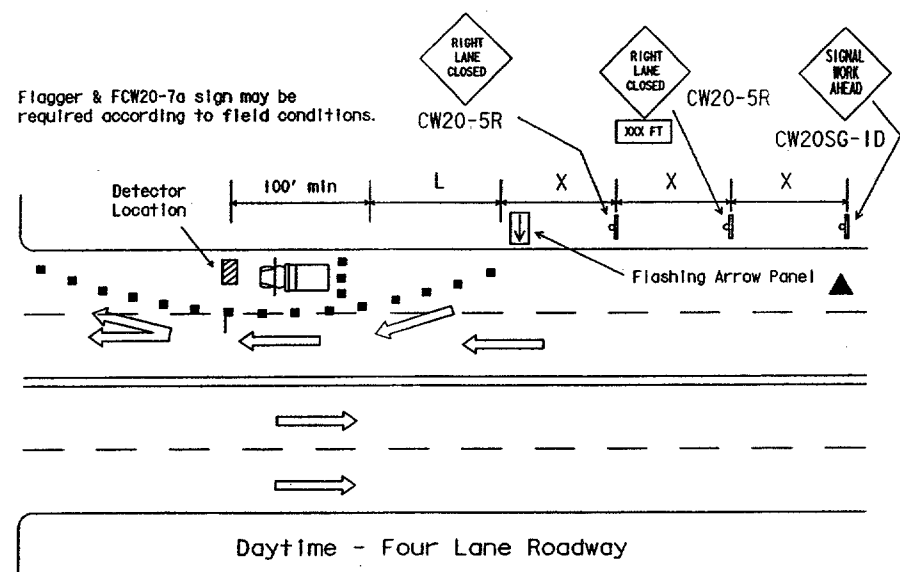
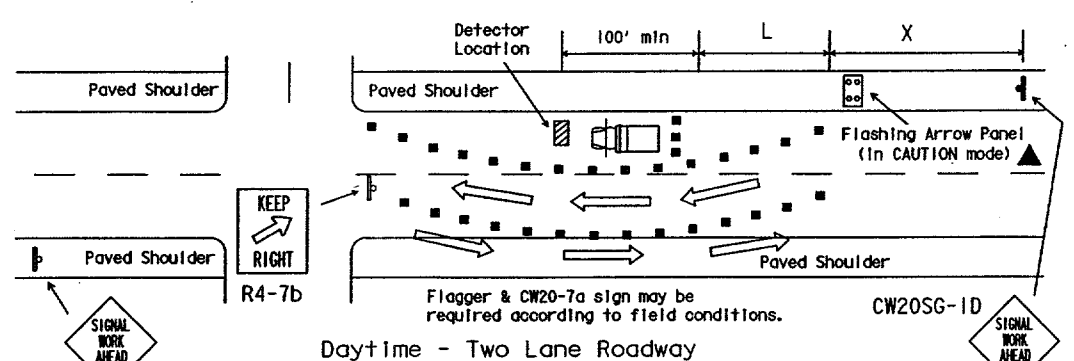


DISCLAIMER
The use of this standard is governed by the "Texas Engineering Practice Act". No warranty of any kind is made by TxDOT for any purpose whatsoever. TxDOT assumes no responsibility for the conversion of this standard to other formats or for incorrect results or damages resulting from its use.

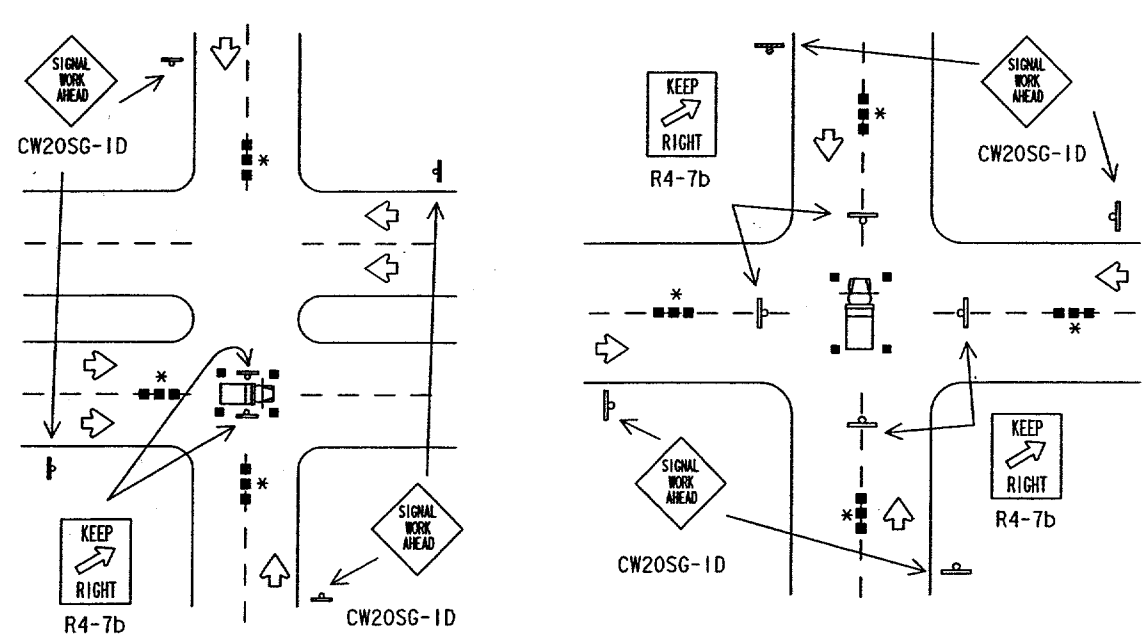


Posted Speed	Formula	Minimum Desirable Taper Lengths **			Suggested Maximum Spacing of Device		Minimum Sign Spacing X Distance
		10' Offset	11' Offset	12' Offset	On a Taper	On a Tangent	
30	$L = \frac{WS^2}{60}$	150'	165'	180'	30'	60'-75'	120'
35		205'	225'	245'	35'	70'-90'	160'
40		265'	295'	320'	40'	80'-100'	240'
45		450'	495'	540'	45'	90'-110'	320'
50		500'	550'	600'	50'	100'-125'	400'
55	$L = WS$	550'	605'	660'	55'	110'-140'	500'
60		600'	660'	720'	60'	120'-150'	600'
65		650'	715'	780'	65'	130'-165'	700'
70		700'	770'	840'	70'	140'-175'	800'
75		750'	825'	900'	75'	150'-185'	900'

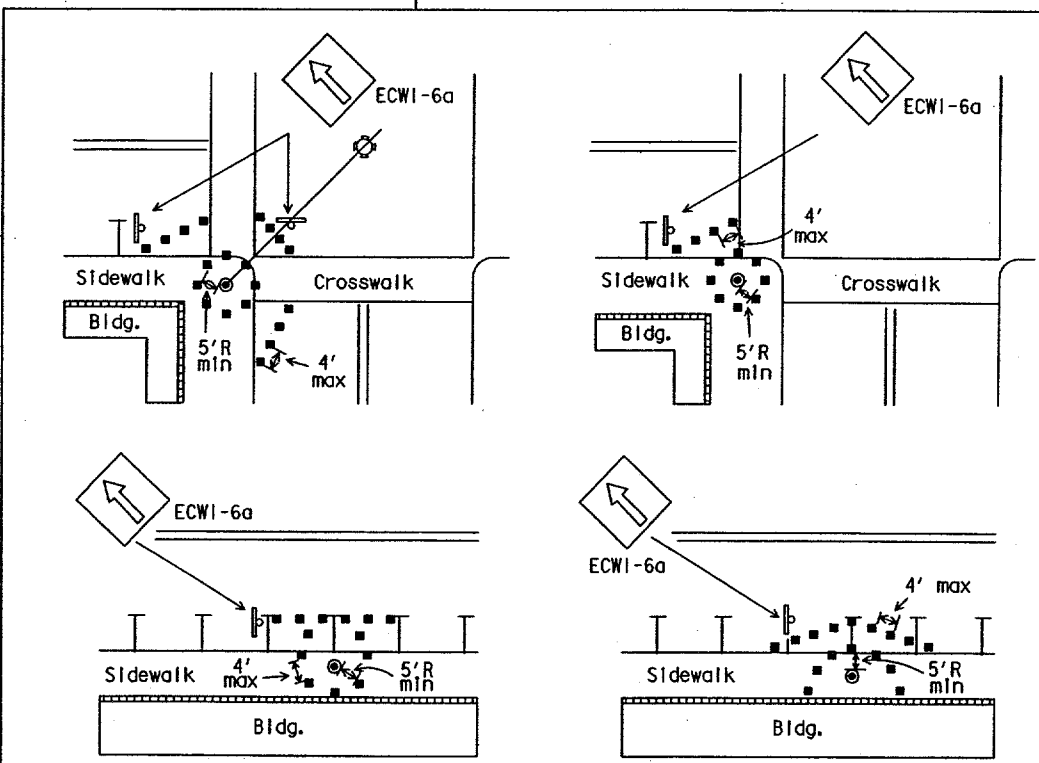
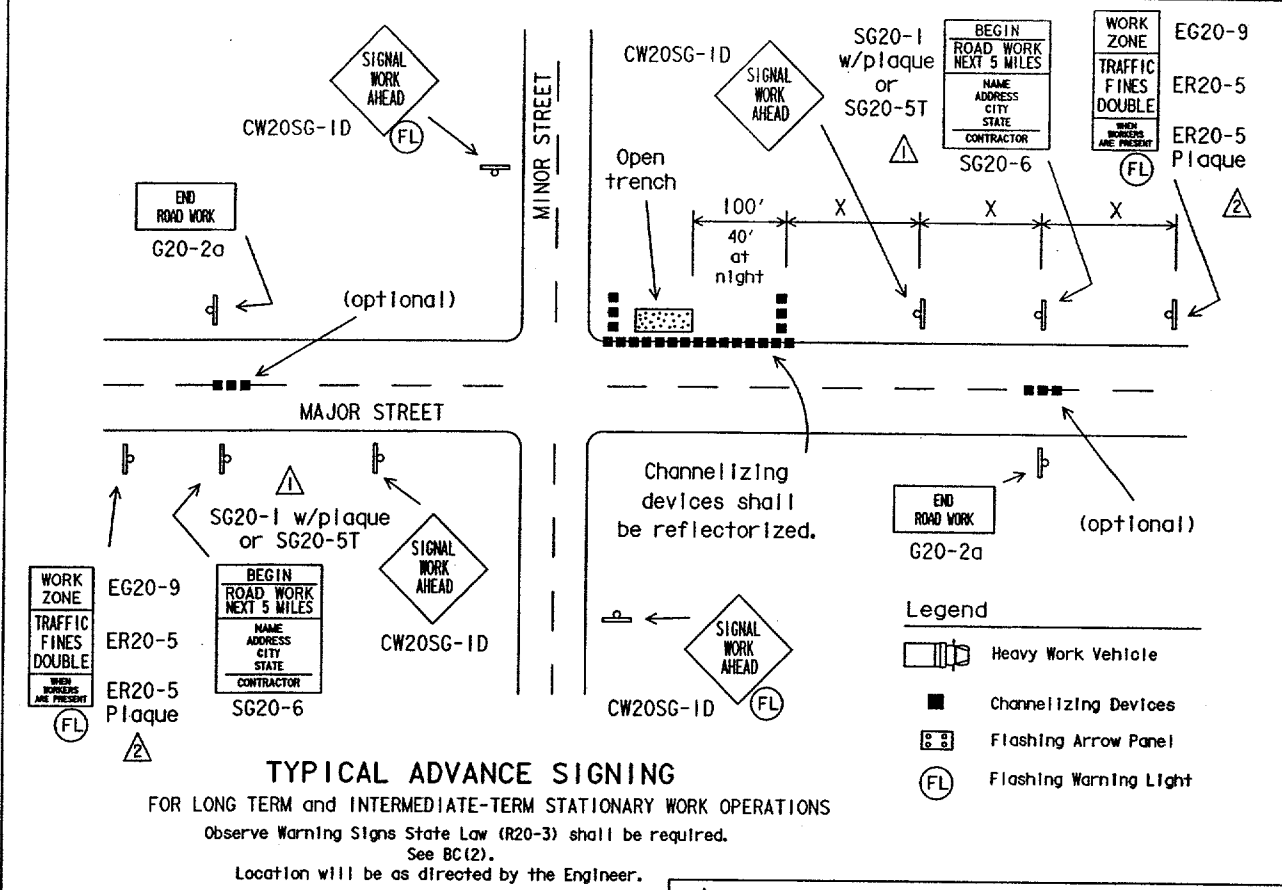
**Taper lengths have been rounded off.
L=Length of Taper (FT.) W=Width of Offset (FT.) S=Posted Speed (MPH)



TYPICAL DETECTOR INSTALLATION
OR OTHER WORK OPERATIONS THAT ARE SHORT TERM OR SHORT DURATION
Nighttime Channelizing Devices shall be reflectorized.



TYPICAL HANGING SIGNAL INSTALLATIONS
OR OTHER WORK OPERATIONS THAT ARE SHORT TERM OR SHORT DURATION
* Advance warning channelizing devices are optional.



- The arrow panel may be omitted when stated elsewhere in the plans.
- Typical channelizing device is the 28" cone.
- Plastic drums or vertical panels may be used if approved by the Engineer.
- For several closely adjoining projects, advance signing may not be required in advance of each intersection, but only in advance of the intersections at the project limits.
- See details elsewhere in the plans for advance signing requirements.
- Advance signs shall be in place when signal construction operations are in progress.
- The contractor shall remove advance signs when no construction operations are underway.
- Obstructions or hazards at the work area shall be clearly marked and delineated at all times.
- All holes, trenches or other hazardous areas shall be adequately protected by lights or other protective devices.
- Trenches shall be covered or surrounded with orange plastic construction fence as directed by the Engineer.
- Flagger and FCW20-7a sign may be required according to field conditions.
- Vehicles parked in roadway shall be equipped with two strobes.
- High level flags at corners of vehicle may also be used.
- Work operations that require work vehicle in traveled way 20 minutes or less may use cones, high level flags and strobes as advance warning devices.
- Cones should only be placed around vehicle.
- Flaggers may be used on high speed rural intersections.

LEVELS DISPLAYED	ACC+
1	1
2	2
3	3
4	4
5	5
6	6
7	7
8	8
9	9
10	10
11	11
12	12
13	13
14	14
15	15
16	16
17	17
18	18
19	19
20	20
21	21
22	22
23	23
24	24
25	25
26	26
27	27
28	28
29	29
30	30
31	31
32	32
33	33
34	34
35	35
36	36
37	37
38	38
39	39
40	40
41	41
42	42
43	43
44	44
45	45
46	46
47	47
48	48
49	49
50	50
51	51
52	52
53	53
54	54
55	55
56	56
57	57
58	58
59	59
60	60
61	61
62	62
63	63
64	64
65	65
66	66
67	67
68	68
69	69
70	70
71	71
72	72
73	73
74	74
75	75
76	76
77	77
78	78
79	79
80	80
81	81
82	82
83	83
84	84
85	85
86	86
87	87
88	88
89	89
90	90
91	91
92	92
93	93
94	94
95	95
96	96
97	97
98	98
99	99
100	100

STANDARD PLANS
Texas Department of Transportation
Traffic Operations Division

TRAFFIC SIGNAL
INSTALLATION
TYPICAL DETAILS

SHEET 1 OF 2 WZ(BTS-1)-03

REVISIONS	DATE	BY	APP. BY	PROJECT	SHEET
2-98	DAL	6		CM XXXX (XXX)	19
4-98					
10-99	COUNTY	CENTRAL	SECTION	JOB	ROADWAY
3-03	DALLAS	****	**	***	VA