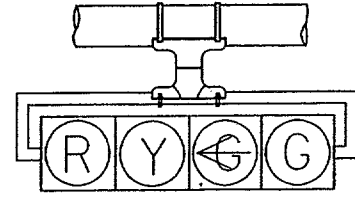
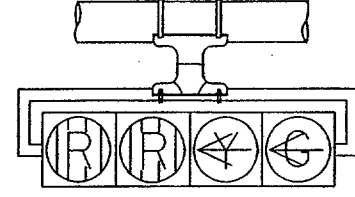


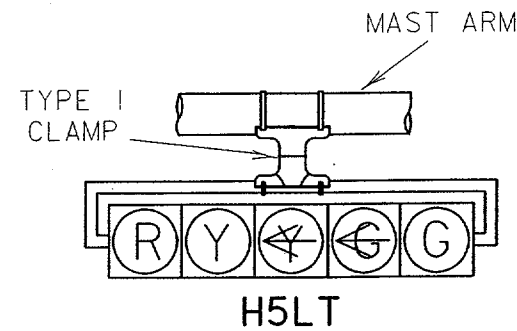
H3



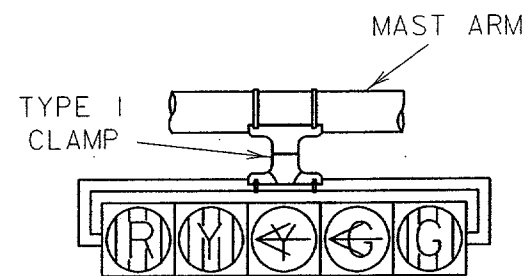
H4LT



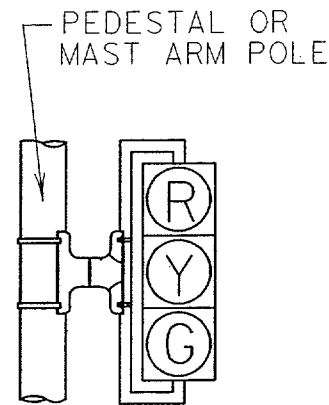
H4LLT



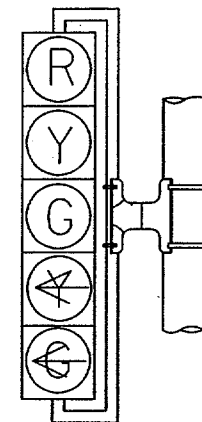
H5LT



H5LLT

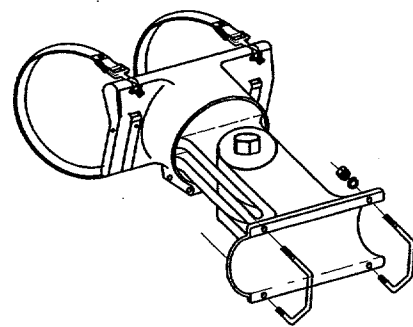


V3



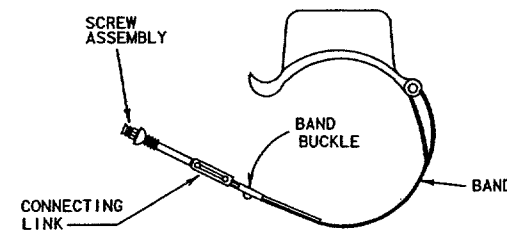
V5LT

NOTE:
VERTICAL LOUVERS SHALL BE INSTALLED ON HORIZONTAL MOUNTED SIGNALS, HORIZONTAL LOUVERS SHALL BE INSTALLED ON VERTICAL MOUNTED SIGNAL WHEN NEEDED.



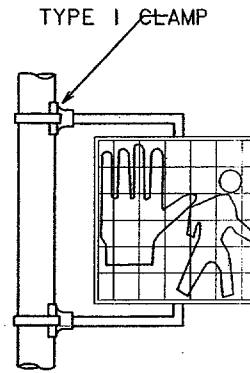
TYPE 2 CLAMP KIT

SHALL BE INSTALLED WHEN ROTATION ABOUT THE HORIZONTAL AND VERTICAL AXES ARE NEEDED.

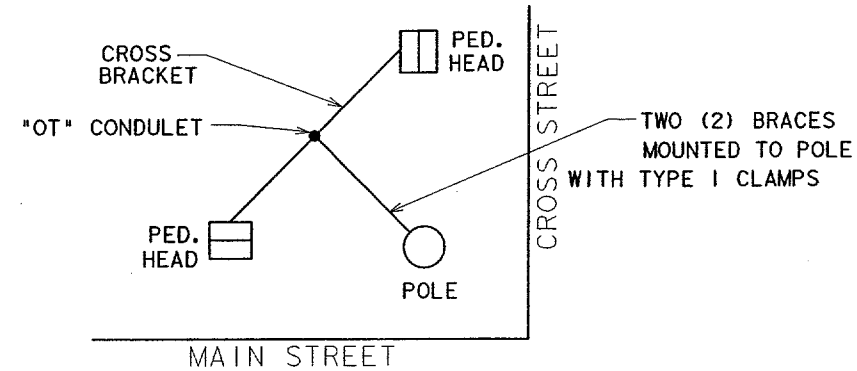


TYPE 1 CLAMP

NOTE:
CLAM SHELL MOUNTING HARDWARE MAY BE USED INSTEAD OF MOUNTING HARDWARE SHOWN ABOVE, AS APPROVED BY THE ENGINEER. ICC P/N 4805 OR OR MCCAIN QUICKMOUNT OR APPROVED EQUAL.



PEDESTRIAN SIGNAL HEAD MOUNTING FOR ONE PEDESTRIAN SIGNAL HEAD 152A

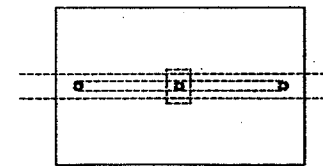


PEDESTRIAN SIGNAL HEAD MOUNTING FOR TWO PEDESTRIAN SIGNAL HEADS 143C



TYPE 1 CLAMP

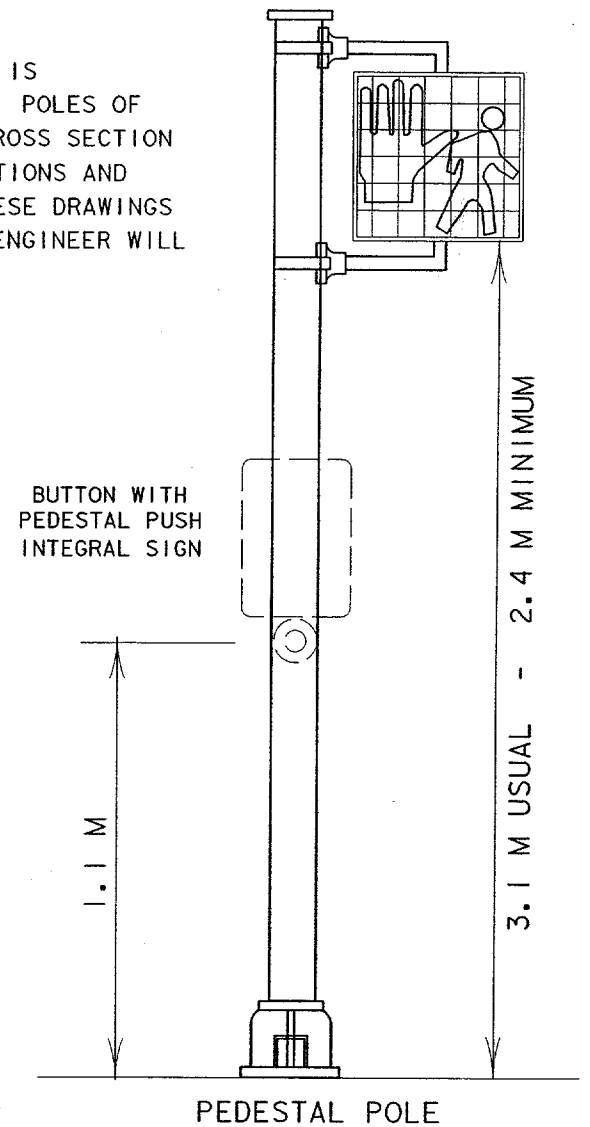
- * ONE (1) CLAMP SHALL BE USED ON SIGNS LESS THAN OR EQUAL TO 3.0 M IN LENGTH.
- * TWO (2) CLAMPS SHALL BE USED ON SIGNS GREATER THAN 3.0 M IN LENGTH.



SIGN OR DAMPENING DEVICE ATTACHMENT FOR MAST ARMS

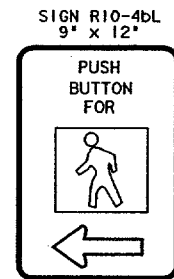
NOTE:

THE POLE ON THIS DRAWING IS SHOWN AS AN EXAMPLE ONLY. POLES OF SIMILAR DESIGN FOR ANY CROSS SECTION WHICH MEET THE SPECIFICATIONS AND REQUIREMENTS SHOWN ON THESE DRAWINGS AND ARE APPROVED BY THE ENGINEER WILL BE DEEMED ACCEPTABLE.

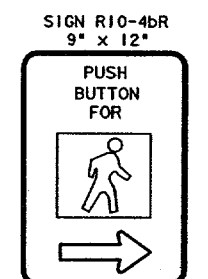


BUTTON WITH PEDESTAL PUSH INTEGRAL SIGN

PEDESTAL POLE



PEDESTRIAN PUSHBUTTON SIGN DETAILS



PEDESTRIAN PUSHBUTTON SIGN DETAILS

NOTES:

1. VEHICLE AND PEDESTRIAN SIGNAL HEADS SHALL BE MOUNTED WITH TYPE 1 CLAMP AND APPROPRIATE TUBING.
2. ALL POLE MOUNTED VEHICLE AND PEDESTRIAN HEADS SHALL BE INSTALLED ON THE AWAY-FROM-TRAFFIC SIDE OF THE PEDESTAL OR MAST ARM POLE.
3. ALL DAMPING DEVICES SHALL BE 18" TO 24" WIDE BY 4 FT IN LENGTH.
4. ALL WIRING FOR PEDESTRIAN SIGNALS SHALL BE TOTALLY ENCLOSED WITHIN THE SIGNAL MOUNTING HAREWARE.
5. ALL PEDESTRIAN SIGNAL HEADS AND PUSH BUTTON SIGNS SHALL DISPLAY THE SYMBOLIZED MESSAGES SHOWN ABOVE.

▲ ALTERNATIVE MOUNTING METHOD revised 12-92
* REVISED 3-7-97

TRAFFIC SIGNAL AND PEDESTRIAN HEAD IDENTIFICATION

© TXDOT
DALLAS DISTRICT STANDARD

FED. PROJ. DIV. NO.	FEDERAL PROJECT NO.	SHEET NO.
6	CM XXXX (XXX)	35
STATE	STATE DIST.	COUNTY
TEXAS	DAL	DALLAS
CONT.	SECT.	JOB HIGHWAY NO.
****	***	** VA