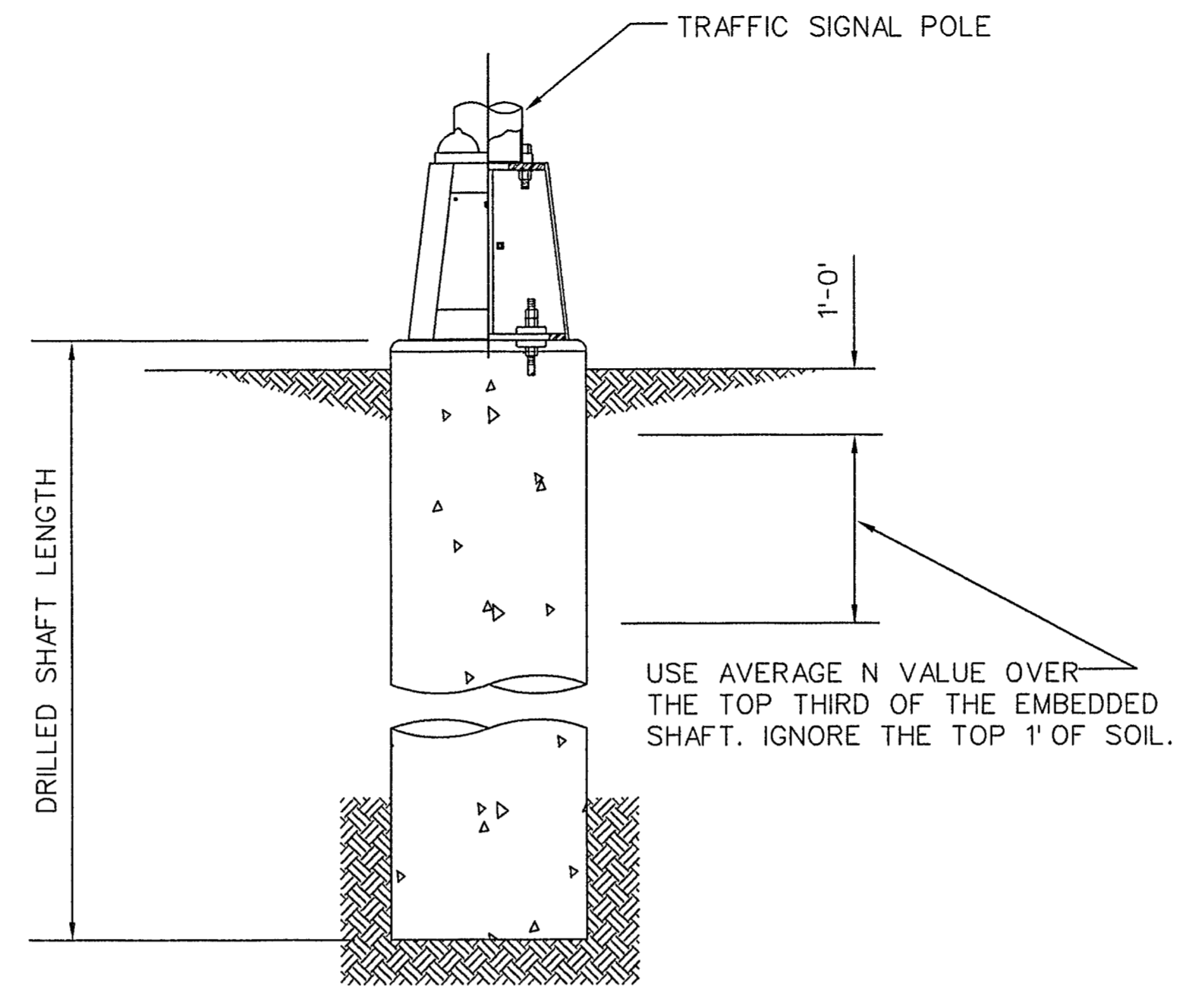


VERTICAL BARS MAY REST ON BOTTOM OF DRILLED HOLE IF MATERIAL IS FIRM ENOUGH TO DO SO WHEN CONCRETE IS PLACED

ELEVATION

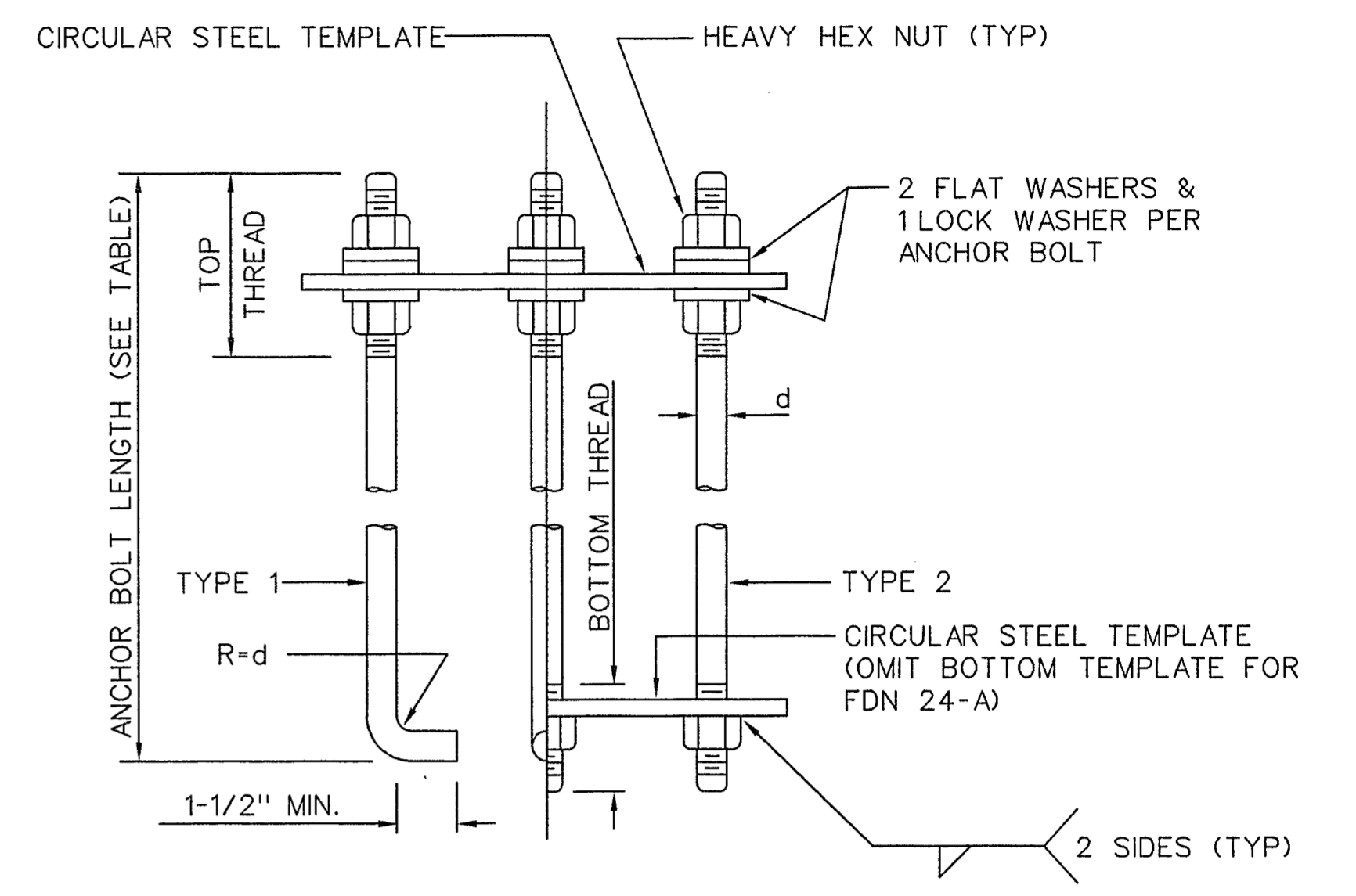
FOUNDATION DETAILS



ANCHOR BOLT & TEMPLATE SIZES

BOLT DIAMETER	*BOLT LENGTH	TOP THREAD	BOTTOM THREAD	BOLT CIRCLE	R2	R1
3/4"	1'-6"	3"	-	12-3/4"	7-1/8"	5-5/8"
1-1/2"	3'-4"	6"	2"	17"	10"	7"
1-3/4"	3'-10"	7"	2-1/4"	19"	11-1/4"	7-3/4"
2"	4'-3"	8"	2-1/2"	21"	12-1/2"	8-1/2"

* MINIMUM DIMENSIONS GIVEN, LONGER BOLTS ARE ACCEPTABLE



HOOKED ANCHOR (TYPE 1) NUT ANCHOR (TYPE 2)

ANCHOR BOLT ASSEMBLY

INSTALLATION PROCEDURE :

THREADS OF ANCHOR BOLTS SHALL BE COATED WITH PIPE JOINT COMPOUND PRIOR TO INSTALLATION OF UPPER NUTS WHEN ERECTING POLE. AFTER POLE IS PLUMBED AND IN PERMANENT ALIGNMENT, THE EXPOSED THREADS OF PAINTED BOLTS SHALL BE CLEANED AND AN ADDITIONAL COATING OF ZINC-RICH PAINT APPLIED TO SEAL THE BOLT THREAD-NUT JOINT.

FOUNDATION DESIGN TABLE

FDN TYPE	DRILLED SHAFT DIA	REINFORCING STEEL		DRILLED SHAFT LENGTH-ft (3), (4), (5)			ANCHOR BOLT DESIGN (1)				FOUNDATION DESIGN LOAD (2)	
		VERT BARS	SPIRAL & PITCH	TEXAS CONE PENETROMETER N blows/ft			ANCHOR BOLT DIA	Fy (ksi)	BOLT CIR DIA	ANCHOR TYPE	MOMENTS K-ft	SHEAR Kips
				10	15	40						
24-A	24"	4-*5	*2 at 12"	5.7	5.3	4.5	3/4"	36	12 3/4"	1	10	1
30-A	30"	8-*9	*3 at 6"	11.3	10.3	8.0	1 1/2"	55	17"	2	87	3
36-A	36"	10-*9	*3 at 6"	13.2	12.0	9.4	1 3/4"	55	19"	2	131	5
36-B	36"	12-*9	*3 at 6"	15.2	13.6	10.4	2 "	55	21"	2	190	7

NOTES :

- (1) ANCHOR BOLT DESIGN DEVELOPS THE FOUNDATION CAPACITY GIVEN UNDER FOUNDATION DESIGN LOADS.
- (2) FOUNDATION DESIGN LOADS ARE THE ALLOWABLE MOMENTS AND SHEARS AT THE BASE OF THE STRUCTURE.
- (3) FIELD PENETROMETER READINGS AT A DEPTH OF APPROXIMATELY 3 TO 5 FEET MAY BE USED TO ADJUST SHAFT LENGTHS.
- (4) IF ROCK IS ENCOUNTERED, THE DRILL SHAFT SHALL EXTEND A MINIMUM OF TWO DIAMETERS INTO SOLID ROCK.
- (5) DECIMAL LENGTHS IN DESIGN TABLE ARE TO ALLOW INTERPOLATION FOR OTHER PENETROMETER VALUES.



The seal appearing on this document was authorized by Alan P. McNeil, P.E. 69951, on May 27, 1997. Alan P. McNeil

DATE	REVISION	BY
TOWN OF ADDISON DALLAS COUNTY, TEXAS		
TRAFFIC SIGNAL POLE FOUNDATIONS		
PROJECT NO. 641153.01000 BARTON-ASCHMAN ASSOCIATES INC. ENGINEERS - DALLAS, TEXAS		
DESIGNED	DRAWN	DATE
APPROVED APM	CHECKED APM	05/27/97
SCALE		FILE
1" = 20'		slgdt44.dgn
SHEET		10 OF 15