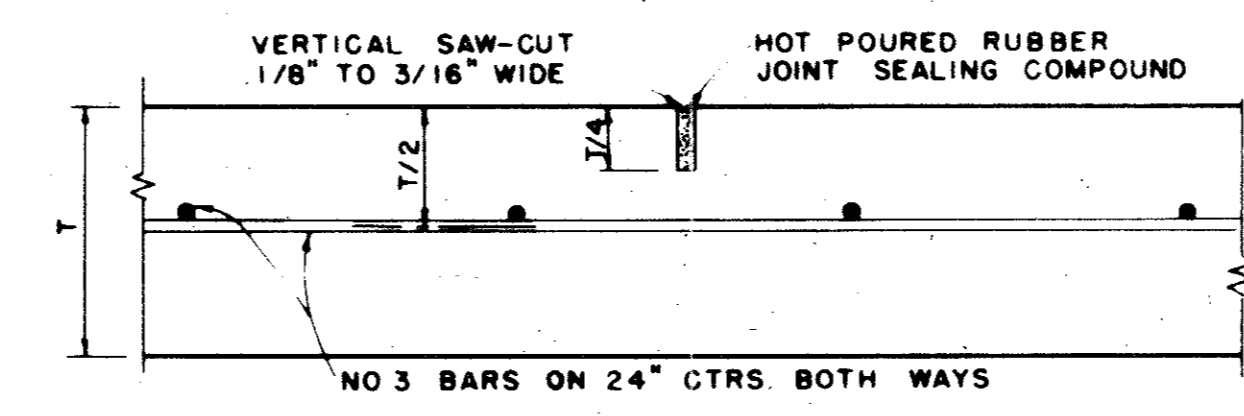
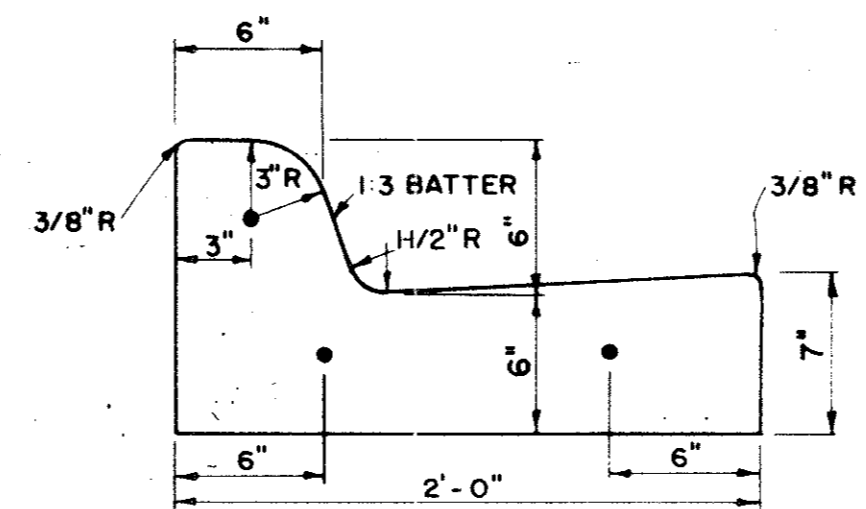


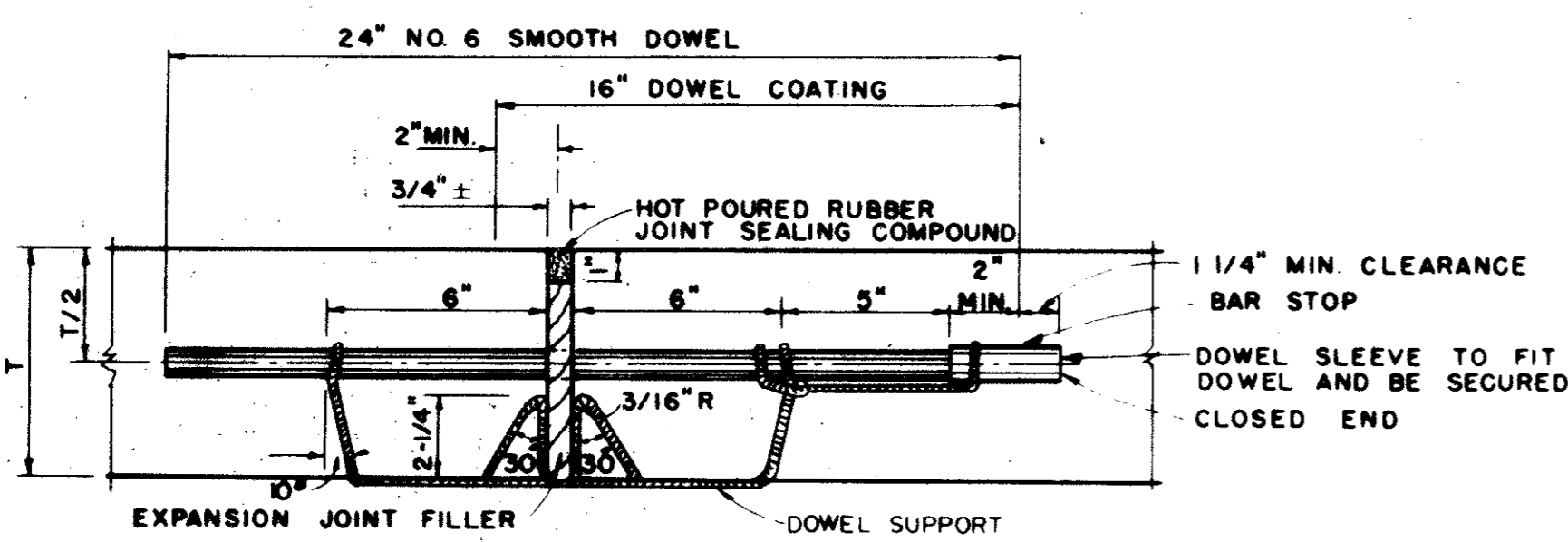
**SPACING DIAGRAM FOR JOINTS**  
 IDENTICAL FOR STREETS (CONCRETE PAVEMENT OR BASE) AND ALLEYS EXCEPT THAT EXPANSION JOINTS FOR ALLEYS SHALL BE PLACED AT THE END OF THE RETURN IN LINE WITH THE PROPERTY LINE. SPACING OF EXPANSION JOINTS SHALL NOT EXCEED 600 FEET.

**SEPARATE CURB & GUTTER**  
 REINFORCEMENT SHALL BE NO. 5 BARS

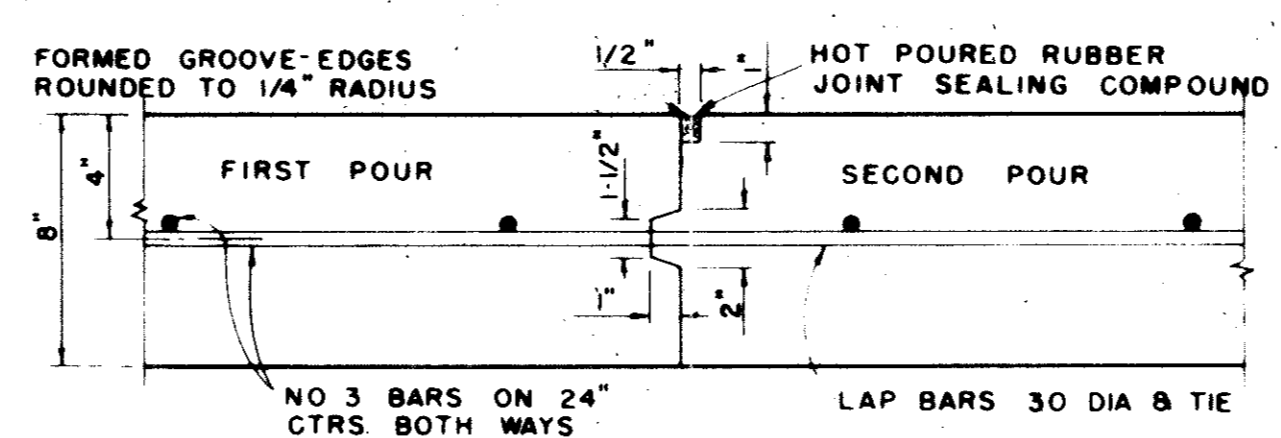
**CURB AND CURB & GUTTER**



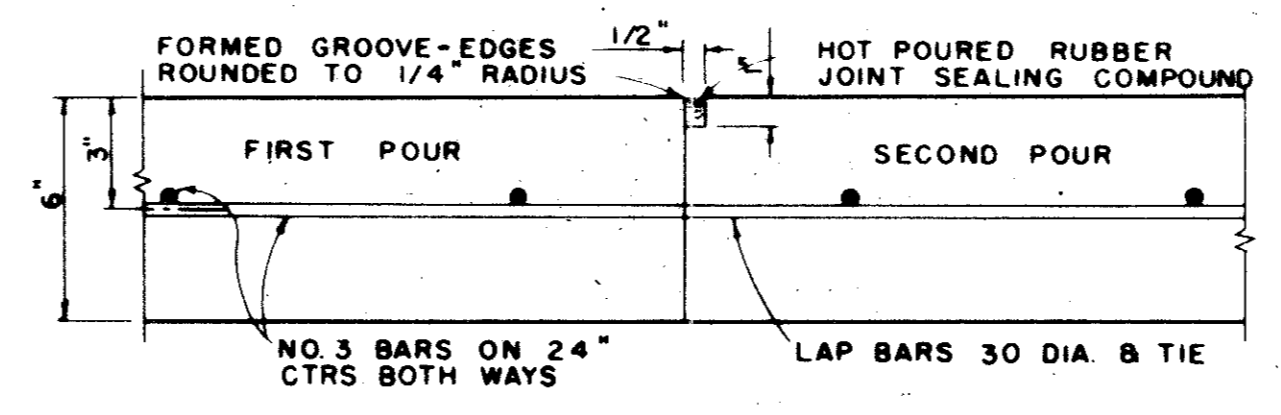
**SAWED DUMMY JOINT**  
 IDENTICAL FOR STREETS AND ALLEYS EXCEPT ALLEY LONGITUDINAL REINFORCEMENT BARS



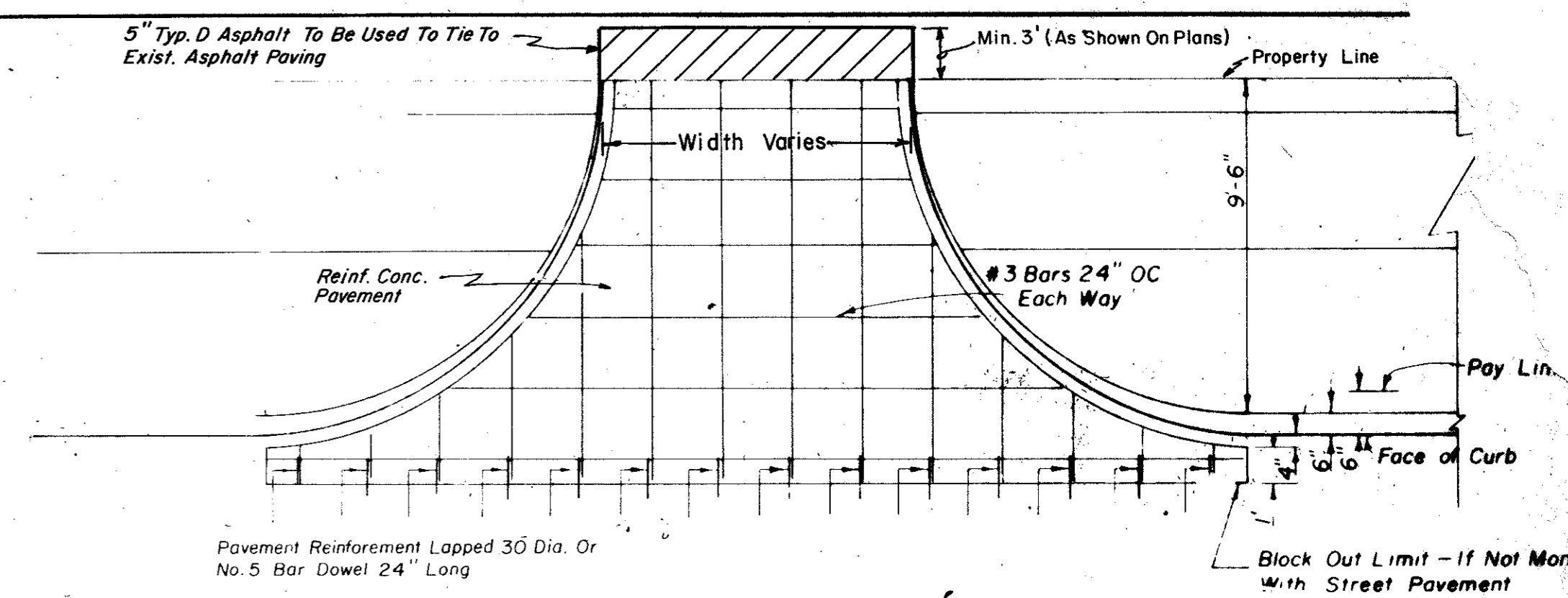
**TRANSVERSE EXPANSION JOINT**  
 IDENTICAL FOR STREETS & ALLEYS



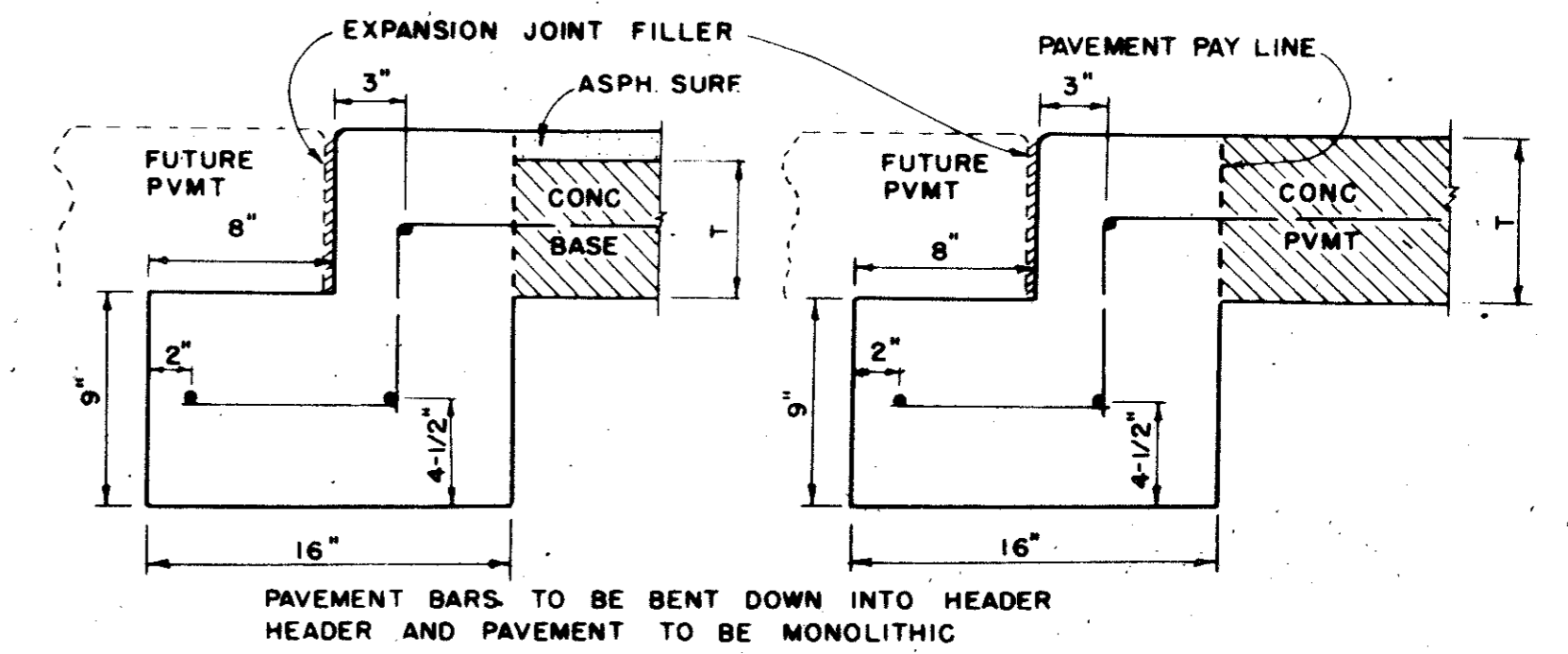
**CONSTRUCTION JOINT**  
 FOR 8" THICKNESS PAVEMENT OR BASE



**CONSTRUCTION JOINT**  
 FOR 6" THICKNESS PAVEMENT OR BASE  
 IDENTICAL FOR STREETS AND ALLEYS EXCEPT ALLEY LONGITUDINAL REINFORCEMENT BARS



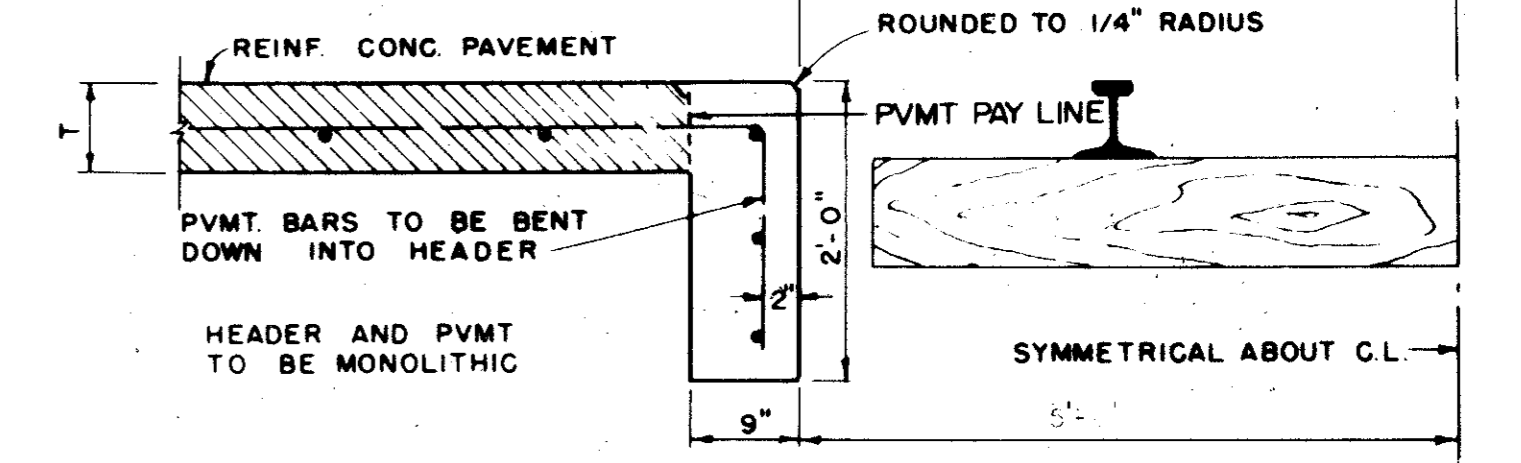
**DRIVEWAY PAVING DETAILS**



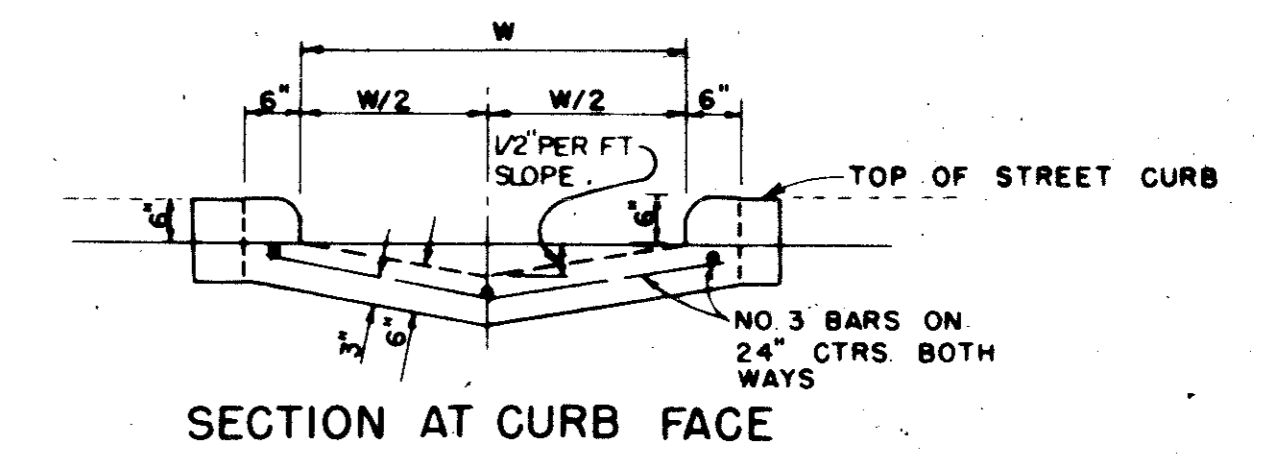
**STREET HEADER**

FOR ASPHALT PAVEMENT ON CONC BASE, TREAT THE SURFACE AS DETAILED BELOW FOR STREET HEADER.

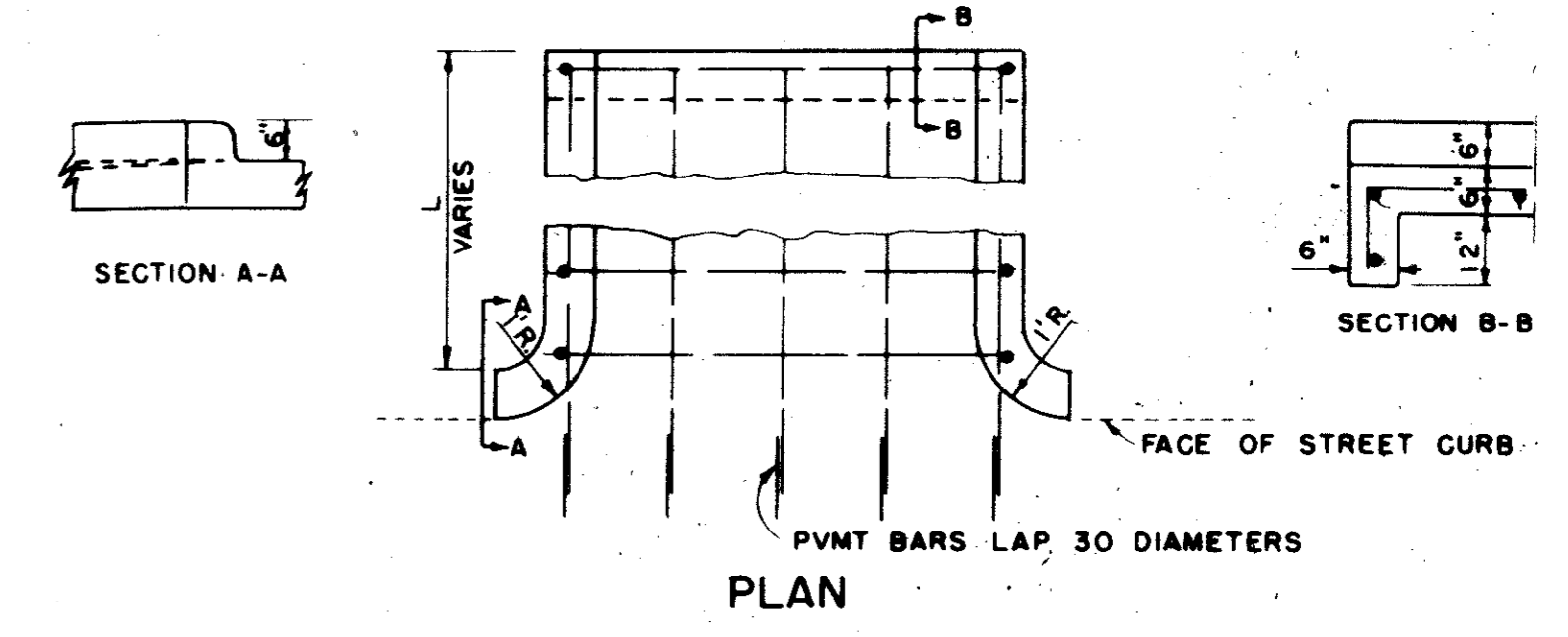
ALL WORK BETWEEN HEADERS TO BE DONE BY OTHERS UNLESS OTHERWISE SPECIFIED



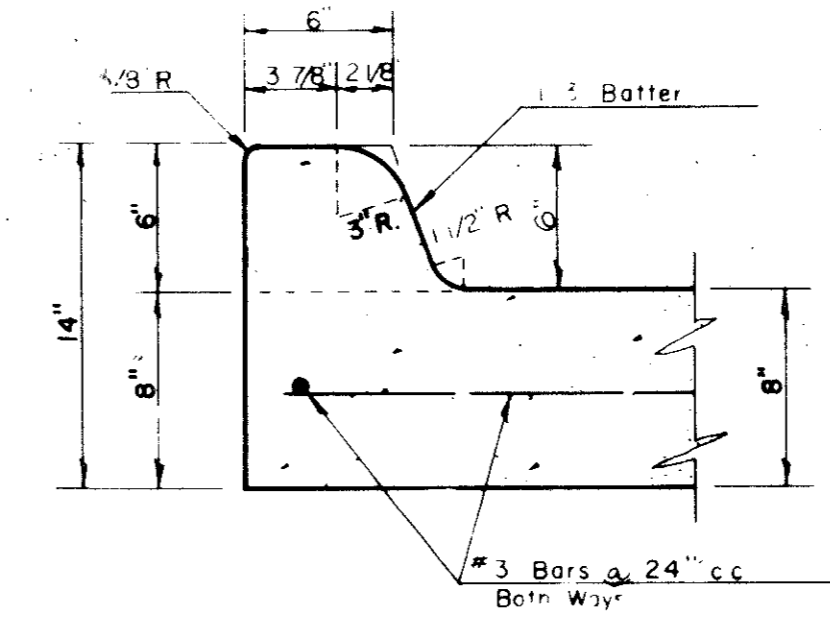
**RAILROAD HEADER**



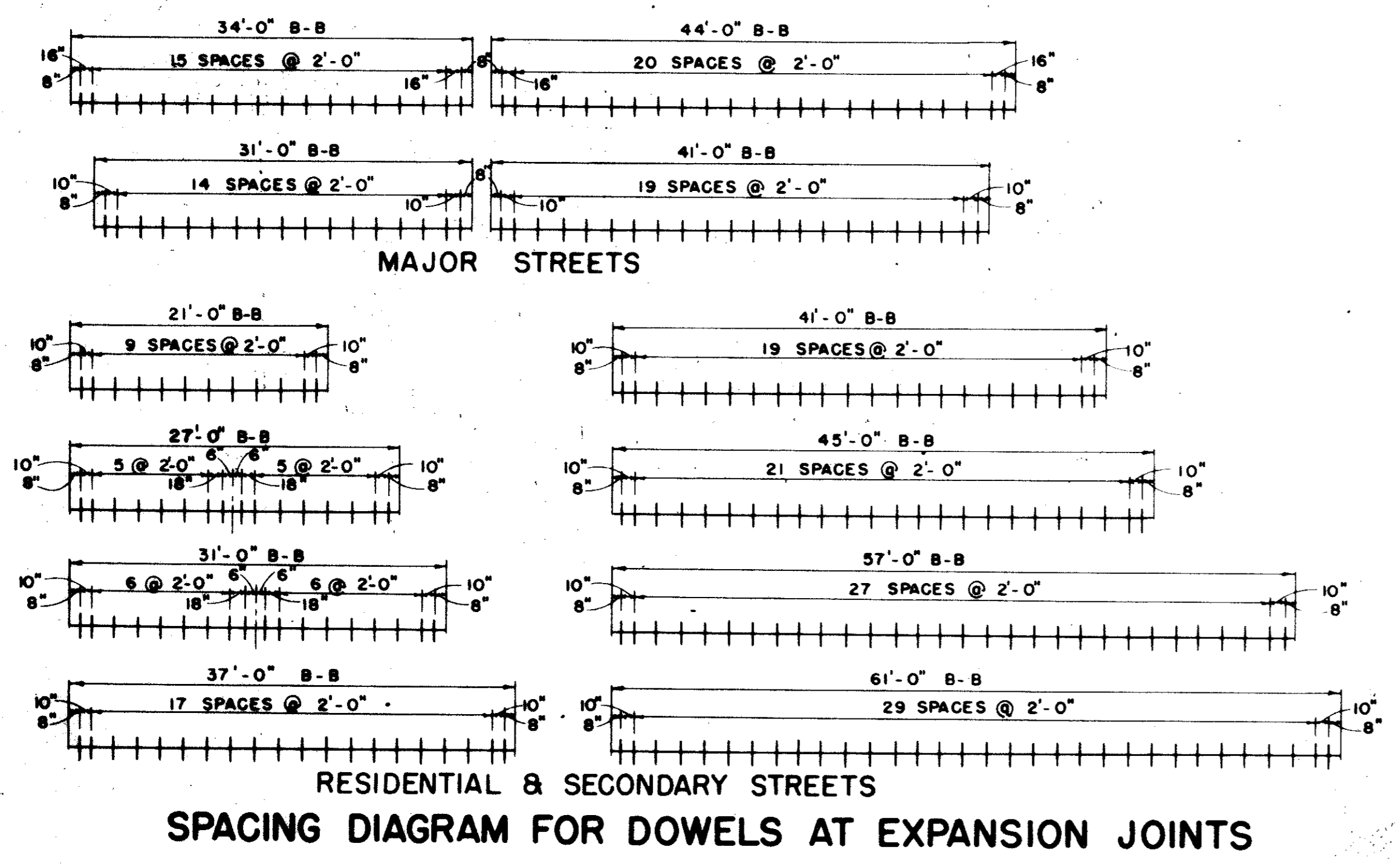
**SECTION AT CURB FACE**



**PLAN FLUME**



**6" INTEGRAL CURB DETAIL**



**SPACING DIAGRAM FOR DOWELS AT EXPANSION JOINTS**

CITY OF ADDISON  
 DALLAS COUNTY, TEXAS  
**MIDWAY ROAD**

**PAVING DETAILS B**

**GINN, INC.**  
 Consulting Engineers - Dallas, Texas

DESIGNED - H.B.U. DRAWN - S.M. DATE - MARCH, 1981 FILE  
 APPROVED - H.W.C. CHECKED - B.H. SCALE - NONE SHEET - 13