

Drainage Calculations (T.H.D. Hydraulic Manual)

Rolling Terrain 1%-3.5%

Impervious Soils

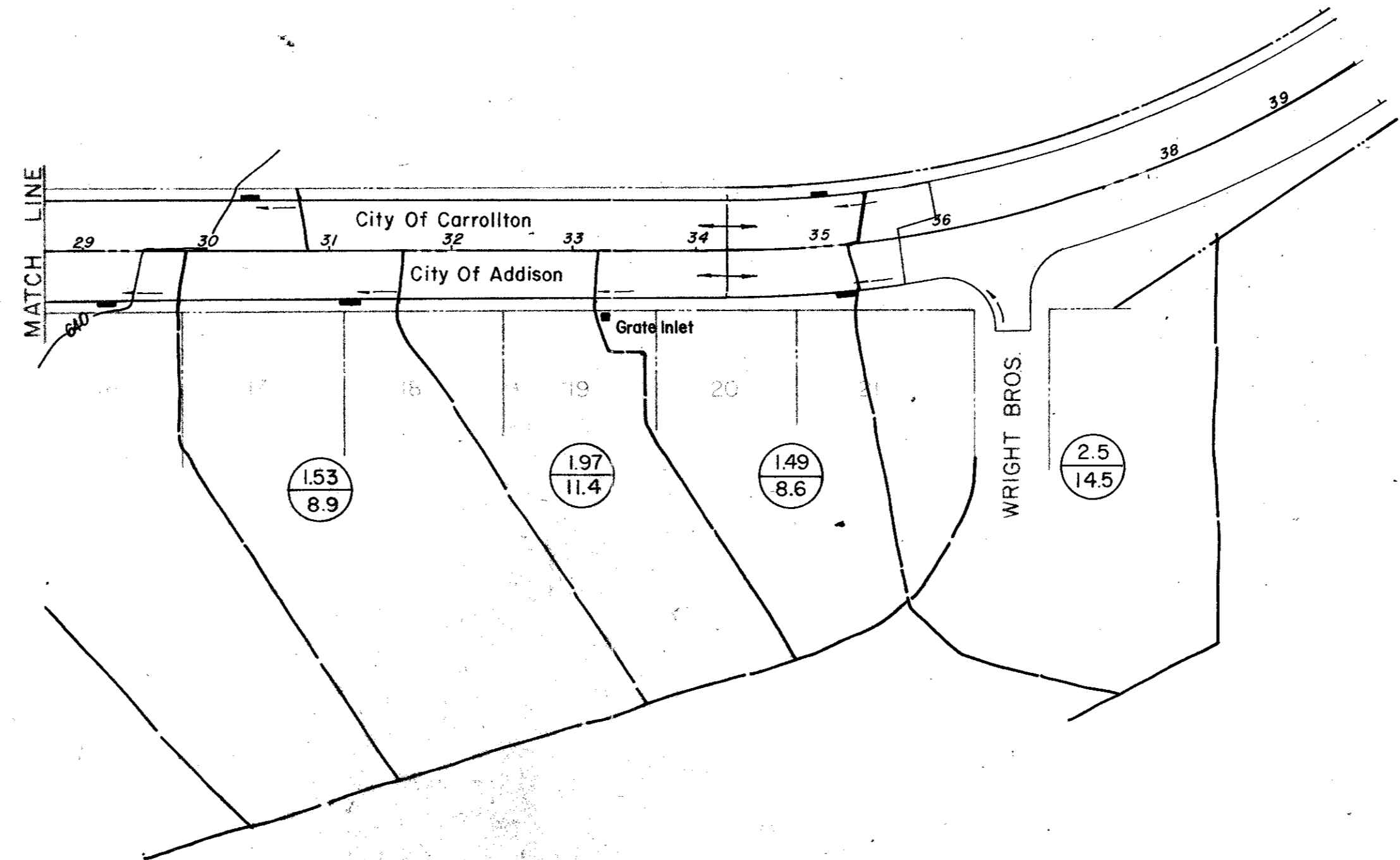
Commercial C=0.6-0.9 (use C=0.75)

For Dallas County

$$Q_{100} = (C)(I)(A) = (0.75)(7.8)(Ac.)$$

$$Q_{100} = (5.8cfs)(Ac)$$

2.5 ACRES
14.5 Q₁₀₀



City Of Addison
MIDWAY ROAD
IMPROVEMENTS

Drainage Area Map

DESIGNED: _____ DRAWN: R.G.B. DATE: MARCH, 1981 FILE: _____
CHECKED: _____ SCALE: 1"=100' SHEET: 14 OF _____