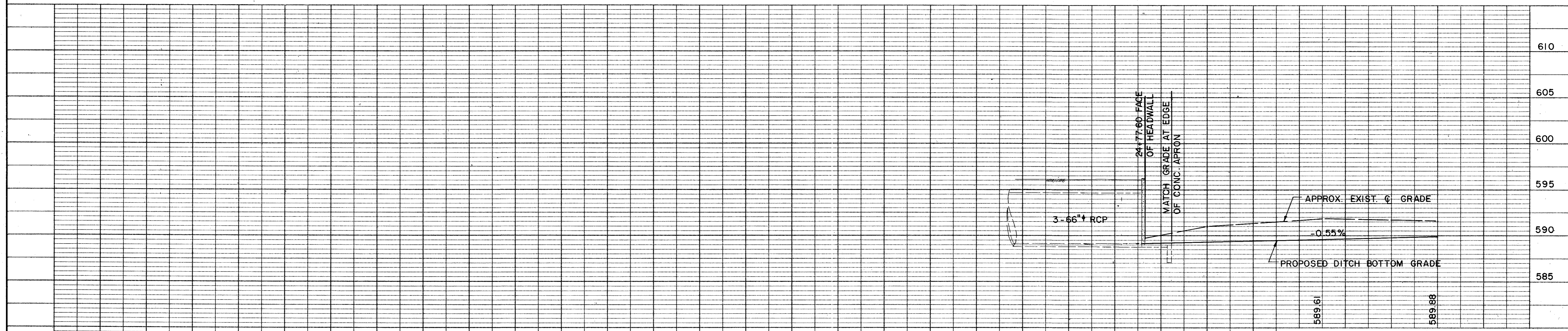
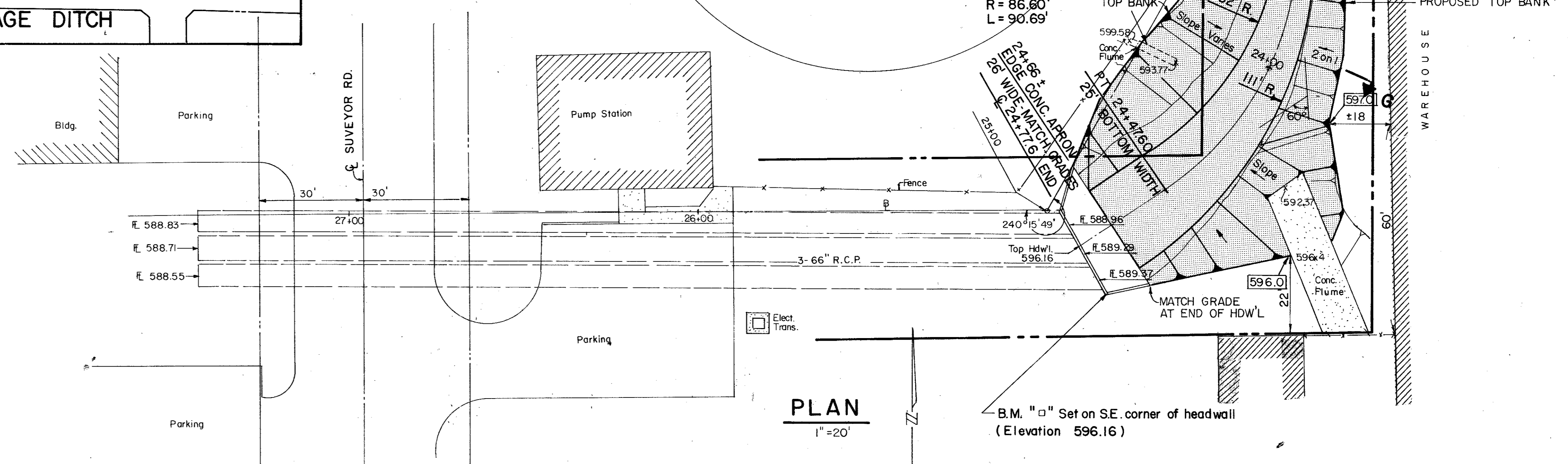


NOTE:
 FROM APPROX. STA. 23+57 TO HEADWALL; BOTTOM DITCH GRADE AND WIDTH SHALL BE AS SHOWN. SIDE SLOPES SHALL BE GRADED, SHAPED AND CONSTRUCTED OF CONCRETE RIPRAP FROM EXISTING TOP BANK TO DITCH BOTTOM, OR TO ELEVATIONS AND DIMENSIONS INDICATED.



| NO. | REVISION | BY | DATE |
|---|--------------|--------------------|-------------|
| CITY OF ADDISON | | | |
| DRAINAGE DITCH | | | |
| MIDWAY ROAD IMPROVEMENTS | | | |
| STA. 23+50 TO STA. 24+66 | | | |
| GINN, INC., Consulting Engineers, Dallas, Texas | | | |
| DESIGNED - G.F. | DRAWN - G.F. | DATE - MARCH, 1981 | FILE |
| APPROVED - | CHECKED - | SCALE - AS SHOWN | SHEET 31 OF |