

Drainage Calculations (T.H.D. Hydraulic Manual)

Rolling Terrain 1%-3.5%

Impervious Soils

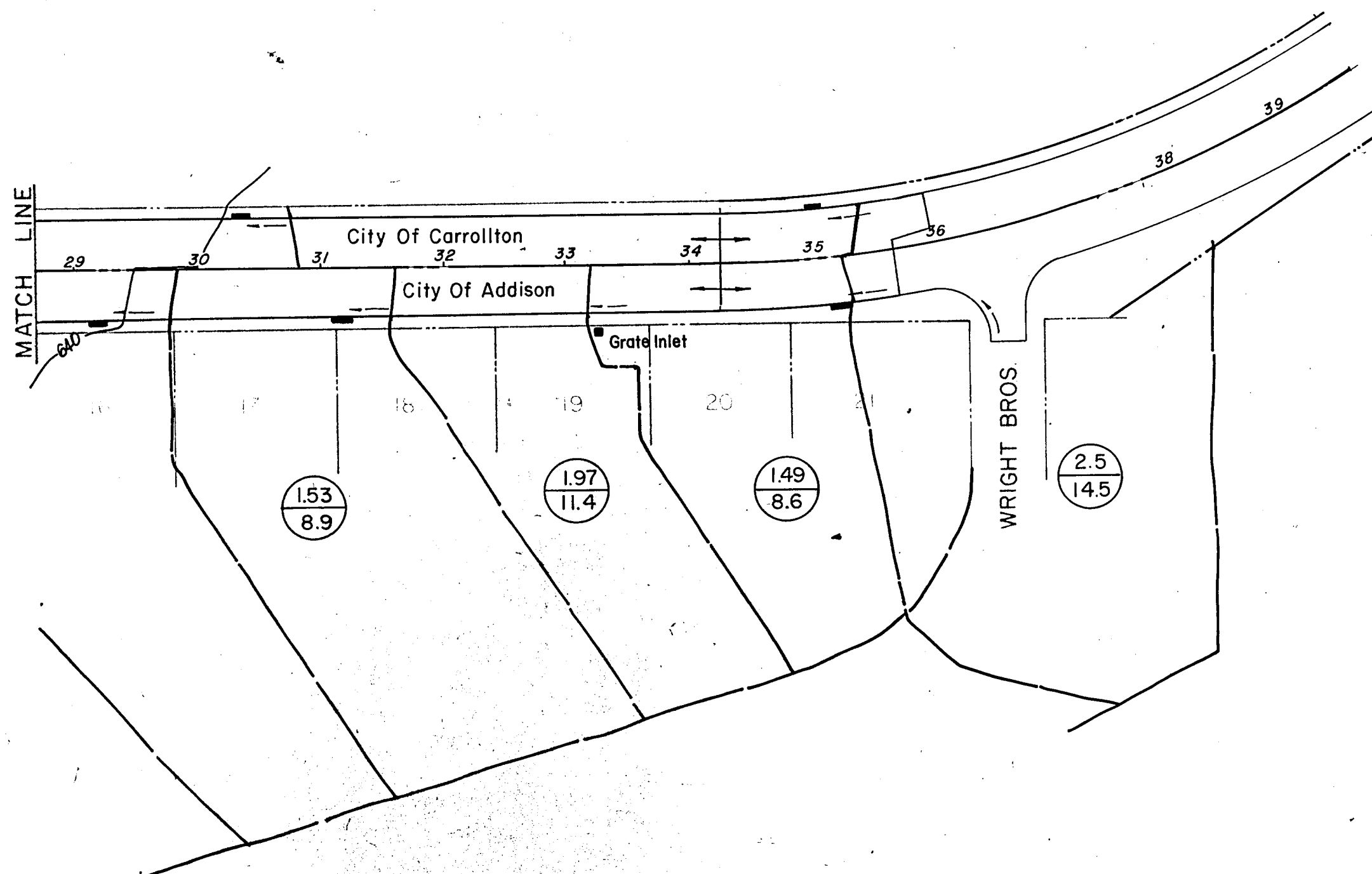
Commercial C = 0.6-0.9 (use C=0.75)

For Dallas County

$$Q_{100} = C(I)(A) = (0.75)(7.8)(Ac.)$$

$$Q_{100} = (5.8c.f.s)(Ac)$$

2.5 ACRES
14.5 Q₁₀₀



City of Addison			
MIDWAY ROAD IMPROVEMENTS			
Drainage Area Map			
DESIGNED	DRAWN R.G.B.	DATE MARCH, 1981	FILE
CHECKED		SCALE 1"=100'	SHEET 14 OF