

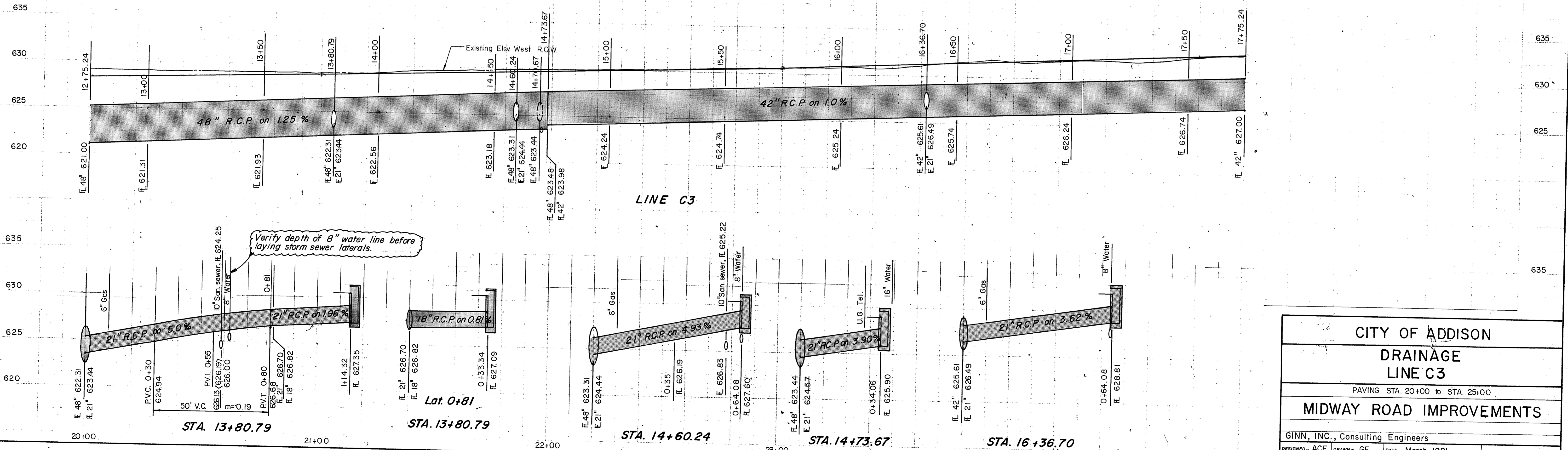
Sta. 25+00
I.P. Set 100' Lt.

Sta. 25+00
I.P. Set 50' Lt.

Sta. 25+00
I.P. Set 50' Lt.

Sta. 25+00
P.K. Nail Set 80' Rt.

B.M. #6 On Conc. Base To Lamp Post At S.W. Corner Of Inter. Wiley Post Rd & Midway Rd. Elev. 631.34
B.M. #7 On Bottom Step To Loading Dock At 15502 Midway Rd. Elev. 636.05



CITY OF ADDISON			
DRAINAGE LINE C3			
PAVING STA. 20+00 to STA. 25+00			
MIDWAY ROAD IMPROVEMENTS			
GINN, INC., Consulting Engineers			
DESIGNED - ACF	DRAWN - GF	DATE - March, 1981	FILE
APPROVED - HWG	CHECKED - HBJ	SCALE - 1"=20'H, 1"=5'V	SHEET 19 OF