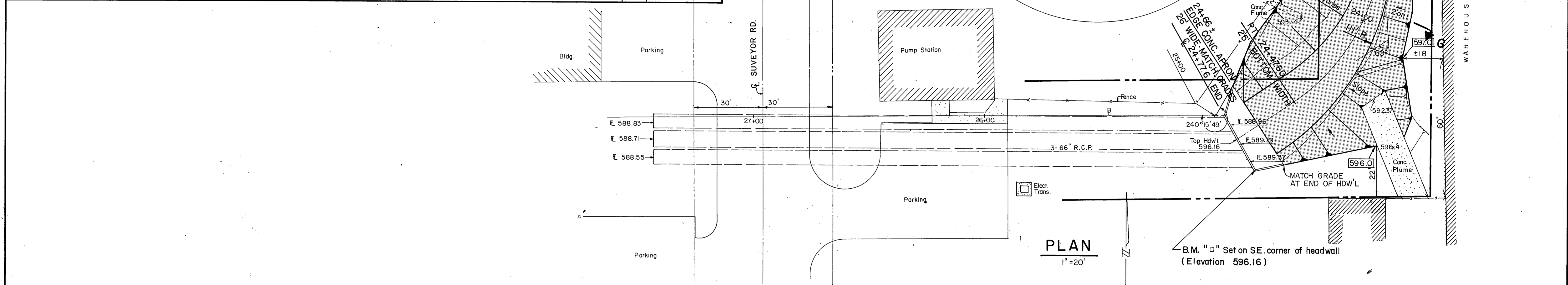
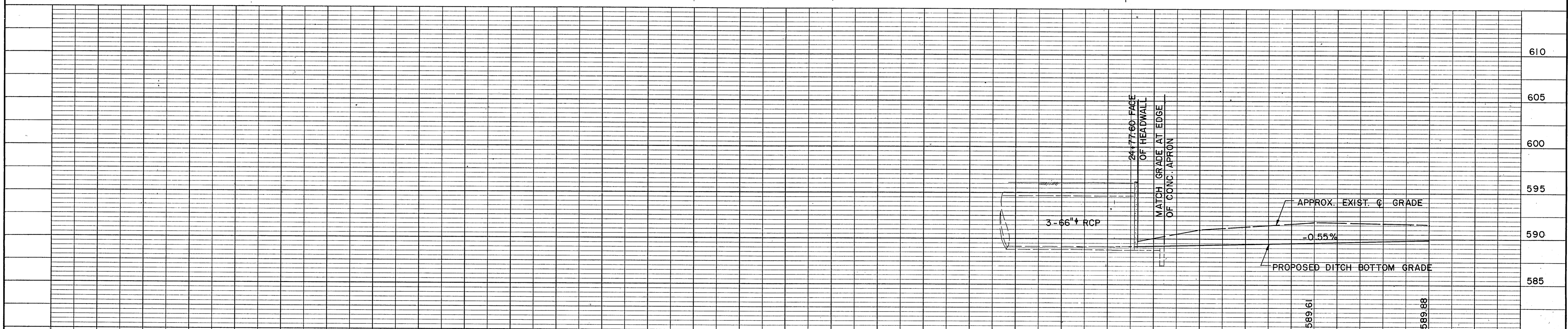


NOTE:
 FROM APPROX. STA 23+57 TO HEADWALL; BOTTOM
 DITCH GRADE AND WIDTH SHALL BE AS SHOWN.
 SIDE SLOPES SHALL BE GRADED, SHAPED AND
 CONSTRUCTED OF CONCRETE RIPRAP FROM
 EXISTING TOP BANK TO DITCH BOTTOM, OR TO
 ELEVATIONS AND DIMENSIONS INDICATED.



PLAN
1"=20'



NO.	REVISION	BY	DATE
CITY OF ADDISON			
DRAINAGE DITCH			
MIDWAY ROAD IMPROVEMENTS			
STA. 23+50 to STA. 24+66			
GINN, INC., Consulting Engineers, Dallas, Texas			
DESIGNED- G.F.	DRAWN- G.F.	DATE- MARCH, 1981	FILE
APPROVED-	CHECKED-	SCALE- AS SHOWN	SHEET 31 OF