

GENERAL NOTES:

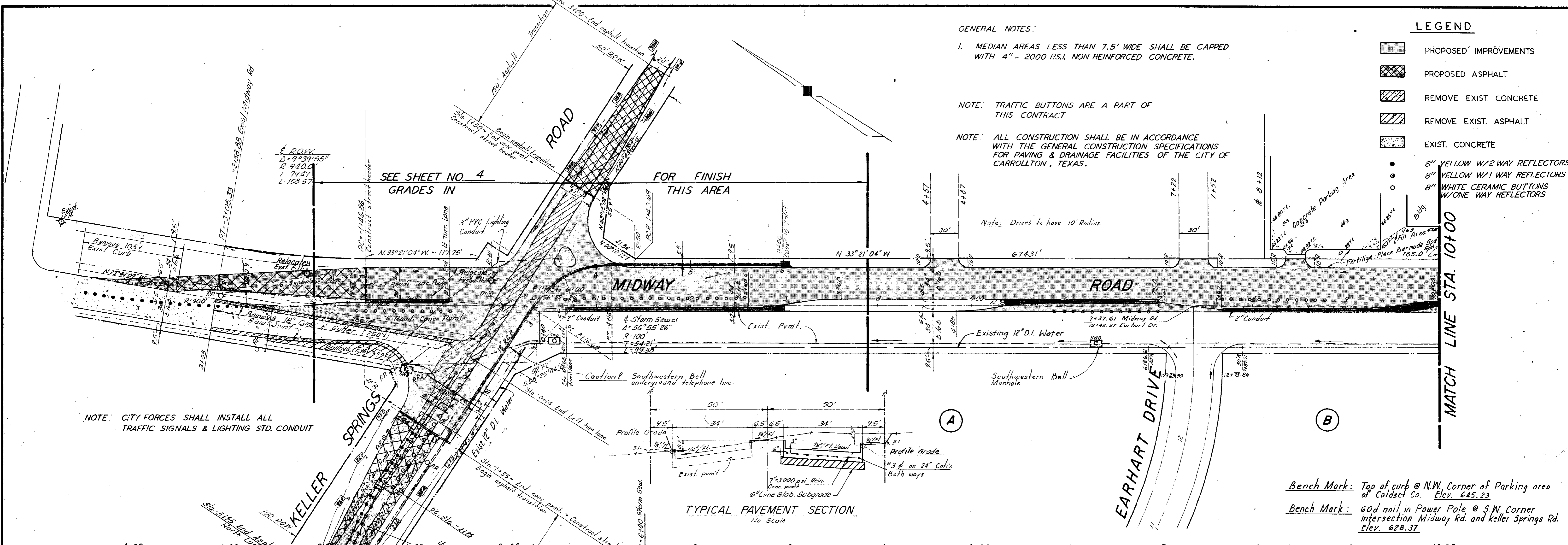
1. MEDIAN AREAS LESS THAN 7.5' WIDE SHALL BE CAPPED WITH 4" - 2000 P.S.I. NON REINFORCED CONCRETE.

NOTE: TRAFFIC BUTTONS ARE A PART OF THIS CONTRACT

NOTE: ALL CONSTRUCTION SHALL BE IN ACCORDANCE WITH THE GENERAL CONSTRUCTION SPECIFICATIONS FOR PAVING & DRAINAGE FACILITIES OF THE CITY OF CARROLLTON, TEXAS.

LEGEND

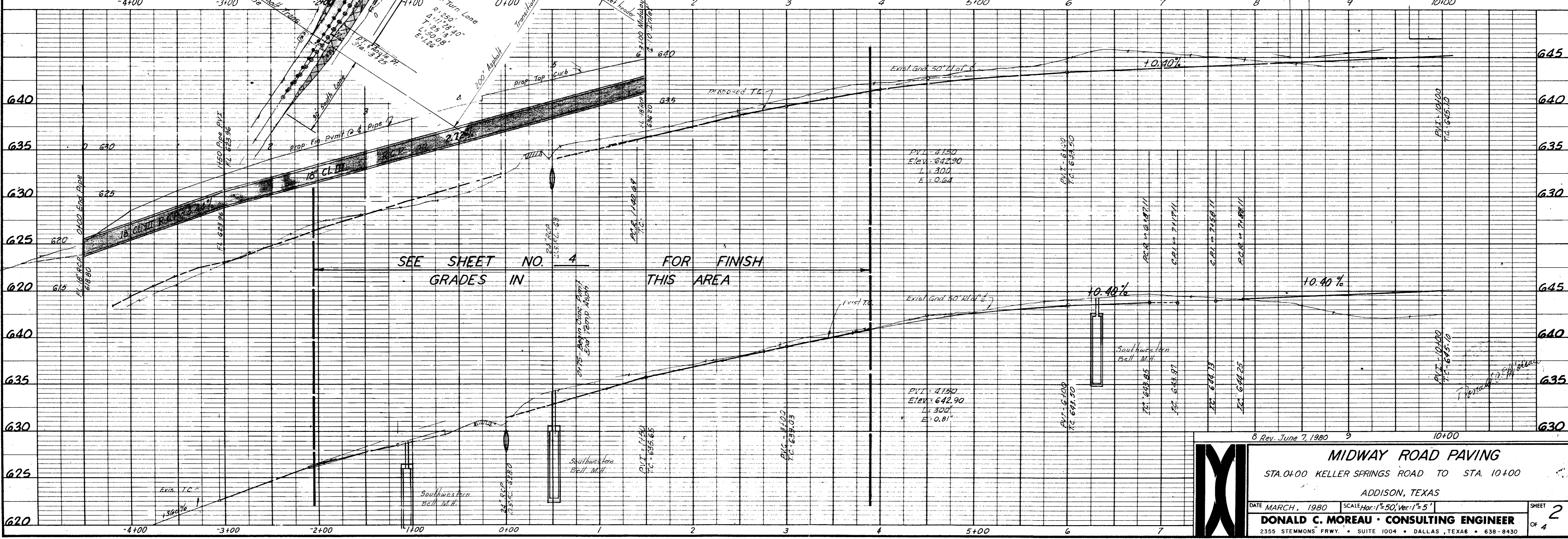
- PROPOSED IMPROVEMENTS
- PROPOSED ASPHALT
- REMOVE EXIST. CONCRETE
- REMOVE EXIST. ASPHALT
- EXIST. CONCRETE
-
-
-



NOTE: CITY FORCES SHALL INSTALL ALL TRAFFIC SIGNALS & LIGHTING STD. CONDUIT

TYPICAL PAVEMENT SECTION
No Scale

Bench Mark: Top of curb @ N.W. Corner of Parking area of Coldset Co. Elev. 645.23
Bench Mark: 60d nail in Power Pole @ S.W. Corner intersection Midway Rd. and Keller Springs Rd. Elev. 628.37



8 Rev. June 7, 1980

MIDWAY ROAD PAVING
STA. 0+00 KELLER SPRINGS ROAD TO STA. 10+00
ADDISON, TEXAS

DATE MARCH, 1980 SCALE Hor: 1"=50', Ver: 1"=5'
DONALD C. MOREAU - CONSULTING ENGINEER
2355 STEMMONS FRWY. • SUITE 1004 • DALLAS, TEXAS • 638-8430

SHEET 2 OF 4