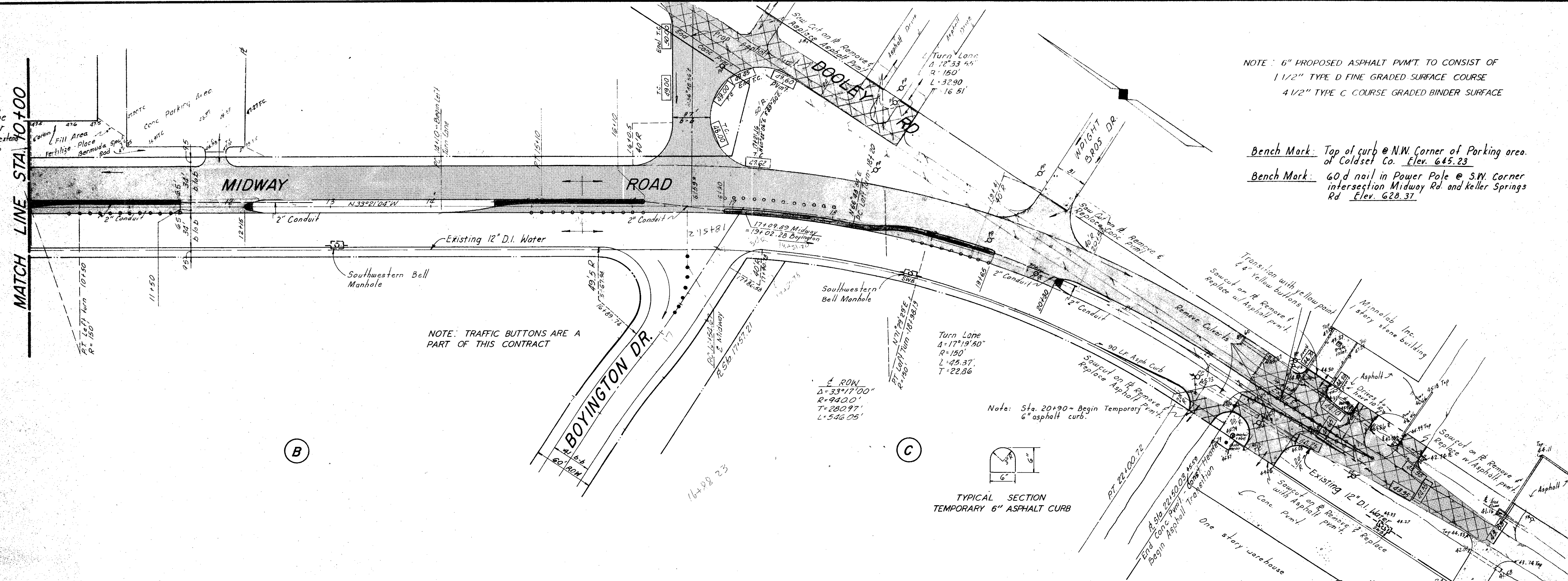


Note: Exist pipe to be raised - relayed in order to drain - end pipe to extend thru new cone curb to drain in gutter.

NOTE: 6" PROPOSED ASPHALT PAVT. TO CONSIST OF
 1 1/2" TYPE D FINE GRADED SURFACE COURSE
 4 1/2" TYPE C COURSE GRADED BINDER SURFACE

Bench Mark: Top of curb @ N.W. Corner of Parking area of Coldset Co. Elev. 645.23

Bench Mark: 60.d nail in Power Pole @ S.W. Corner intersection Midway Rd. and Keller Springs Rd. Elev. 628.37



NOTE: TRAFFIC BUTTONS ARE A PART OF THIS CONTRACT

TYPICAL SECTION TEMPORARY 6" ASPHALT CURB



MIDWAY ROAD PAVING	
STA. 10+00 THRU END STA. 24+00	
ADDISON, TEXAS	
DATE: MARCH, 1980	SCALE: Hor. 1"=50', Ver. 1"=5'
DONALD C. MOREAU • CONSULTING ENGINEER	
2555 STEMMONS FRWY. • SUITE 1004 • DALLAS, TEXAS • 638-8430	
SHEET	3
OF 4	