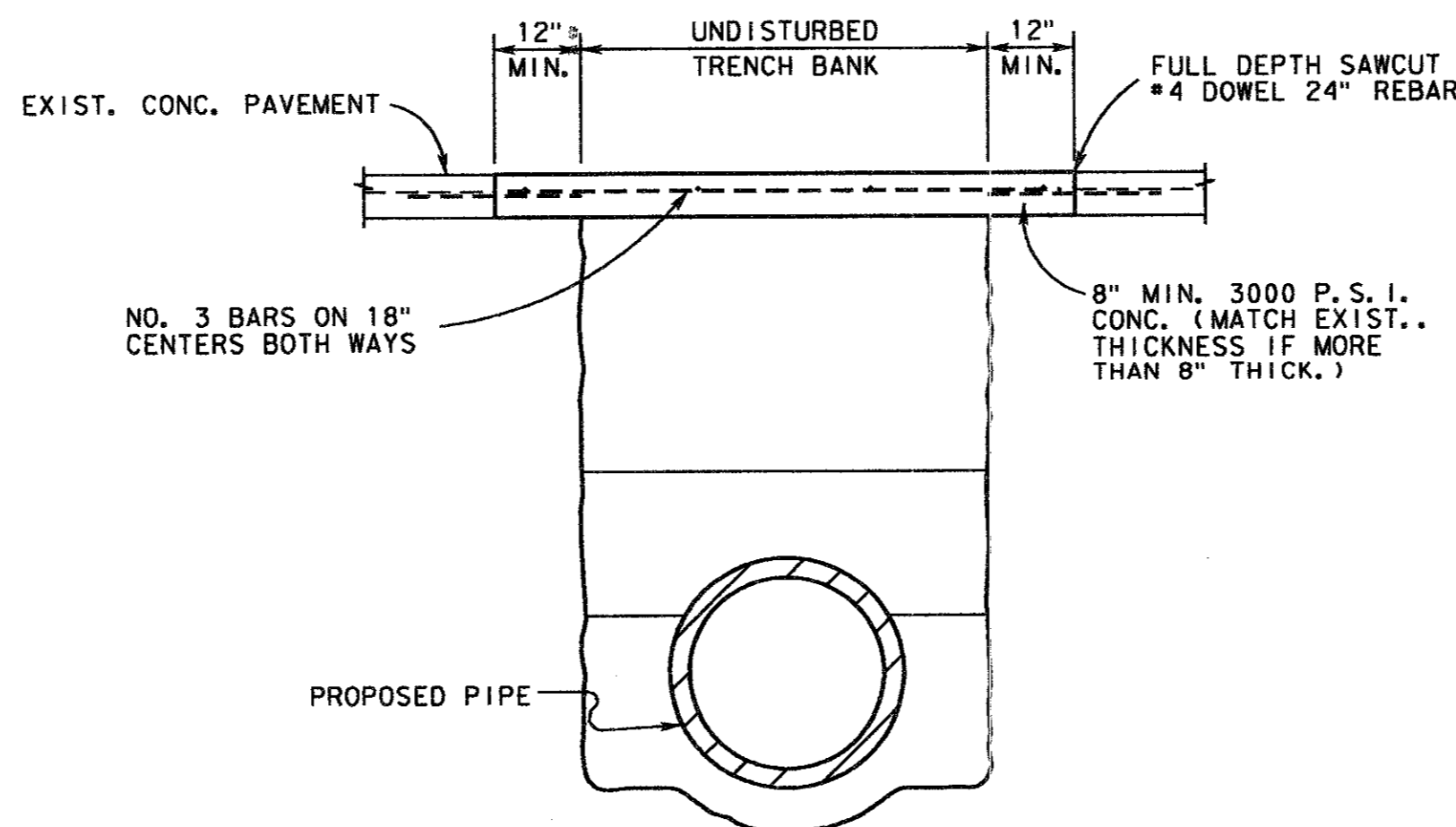


NOTE: CURB TO BE CONSTRUCTED MONOLITHIC WITH THE CONCRETE PAVEMENT AND PLACED ON THE SAME GRADE AND ELEVATION AS THE EXISTING CURB.

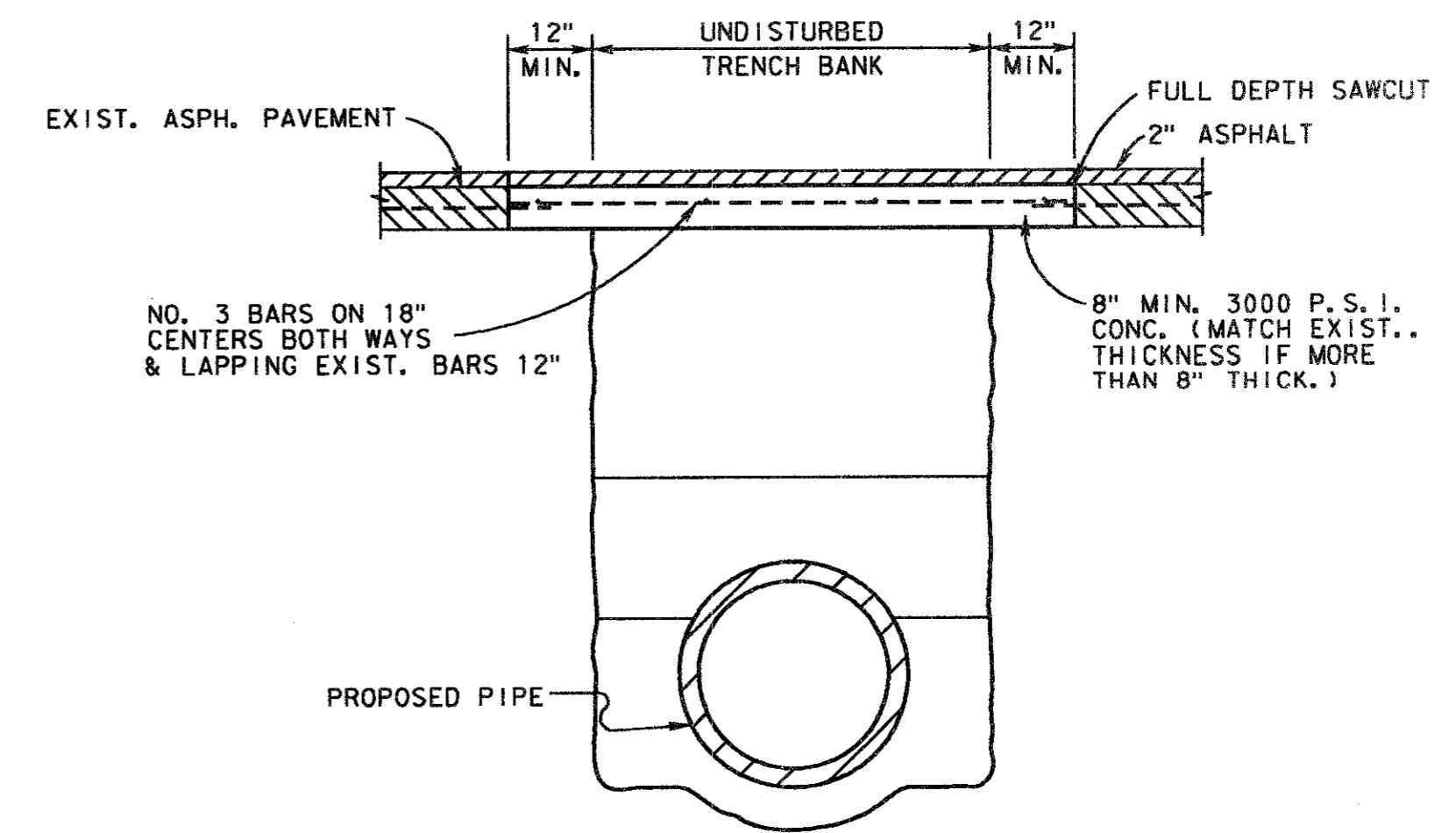
MATCH EXISTING PAVEMENT THICKNESS IF MORE THAN 7" THICK.

6" CONCRETE CURB

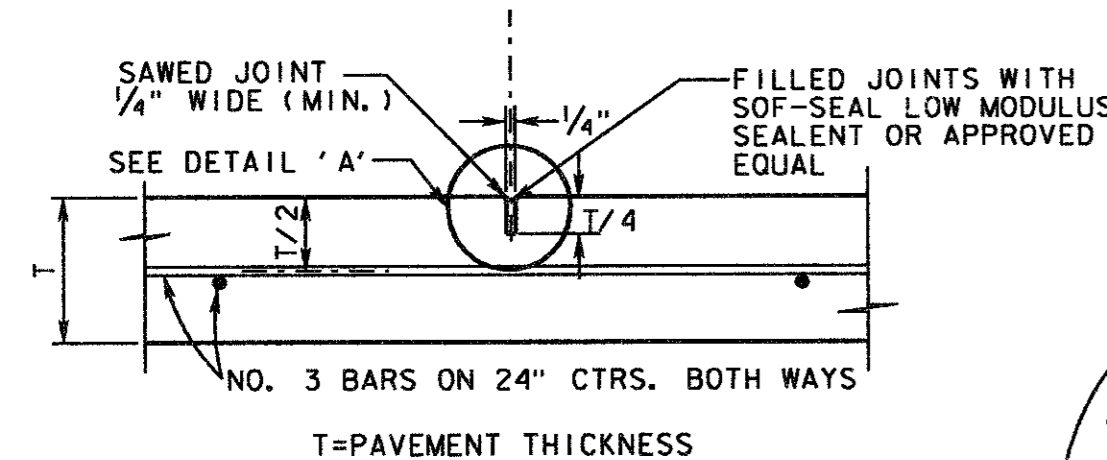


NOTE: SAWCUT SHALL BE SUBSIDIARY TO THE BID ITEM CONCRETE PAVEMENT. NO SEPERATE PAY ITEM.

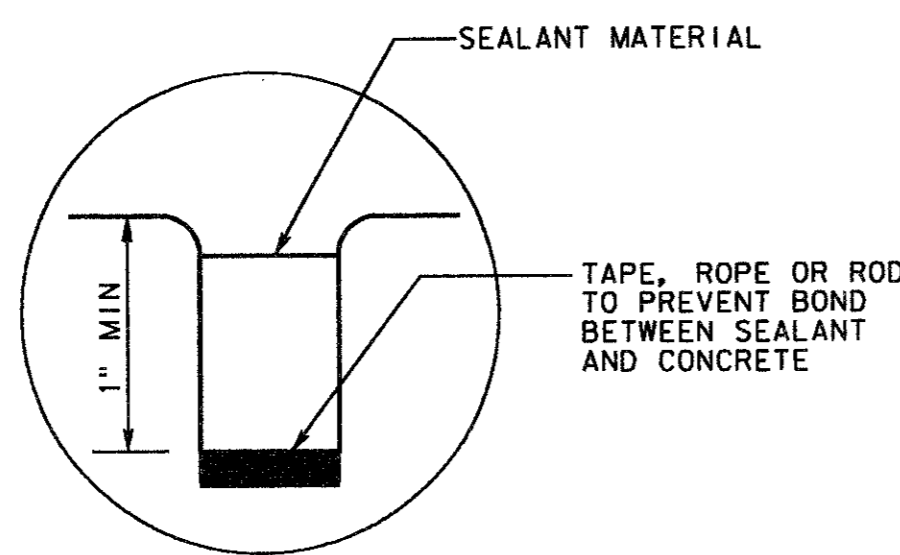
CONCRETE STREET OR DRIVEWAY REPAIR



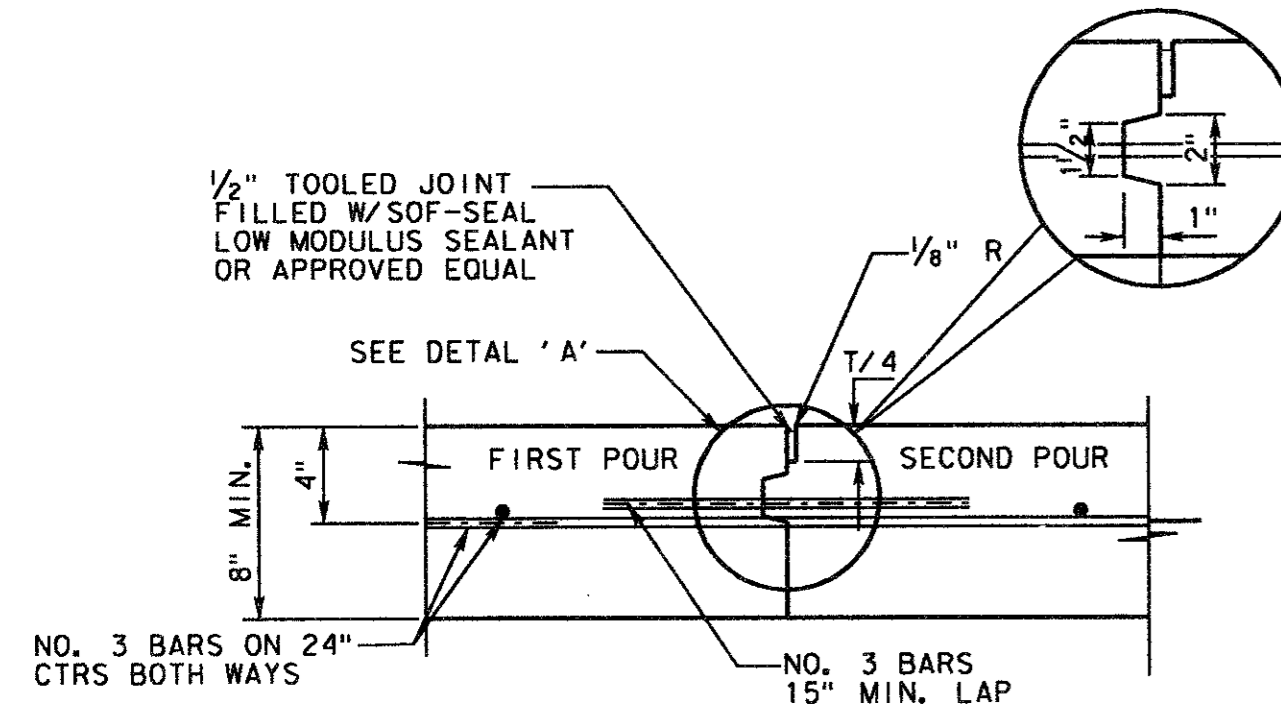
ASPHALT STREET OR DRIVEWAY REPAIR



SAWED DUMMY JOINT (TRANSVERSE DUMMY JOINT TO BE SPACED 16' MIN. & 22' MAX.)



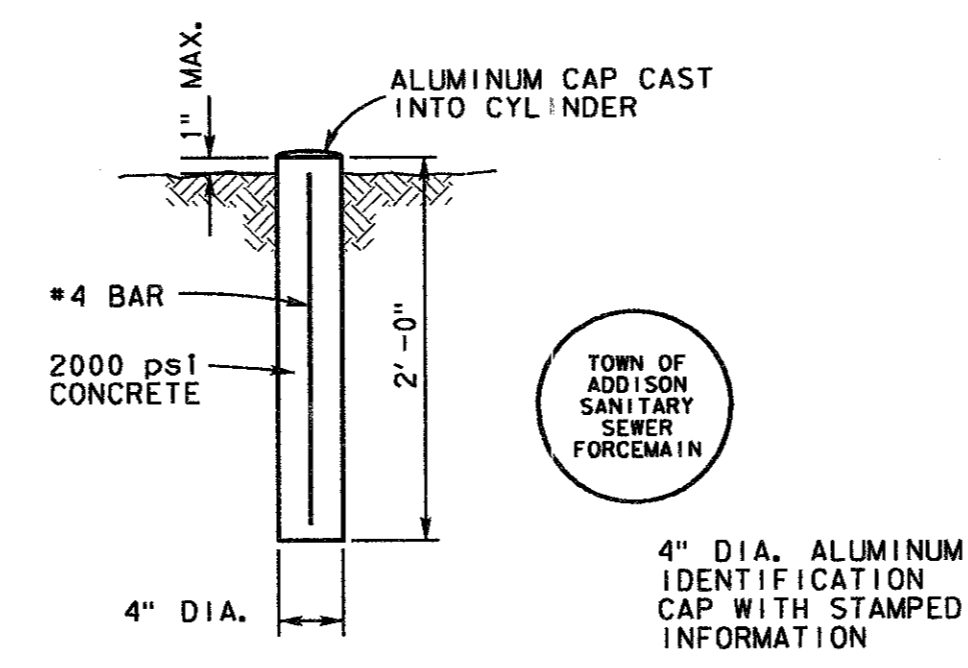
DETAIL 'A'



CONSTRUCTION JOINT FOR PAVEMENTS

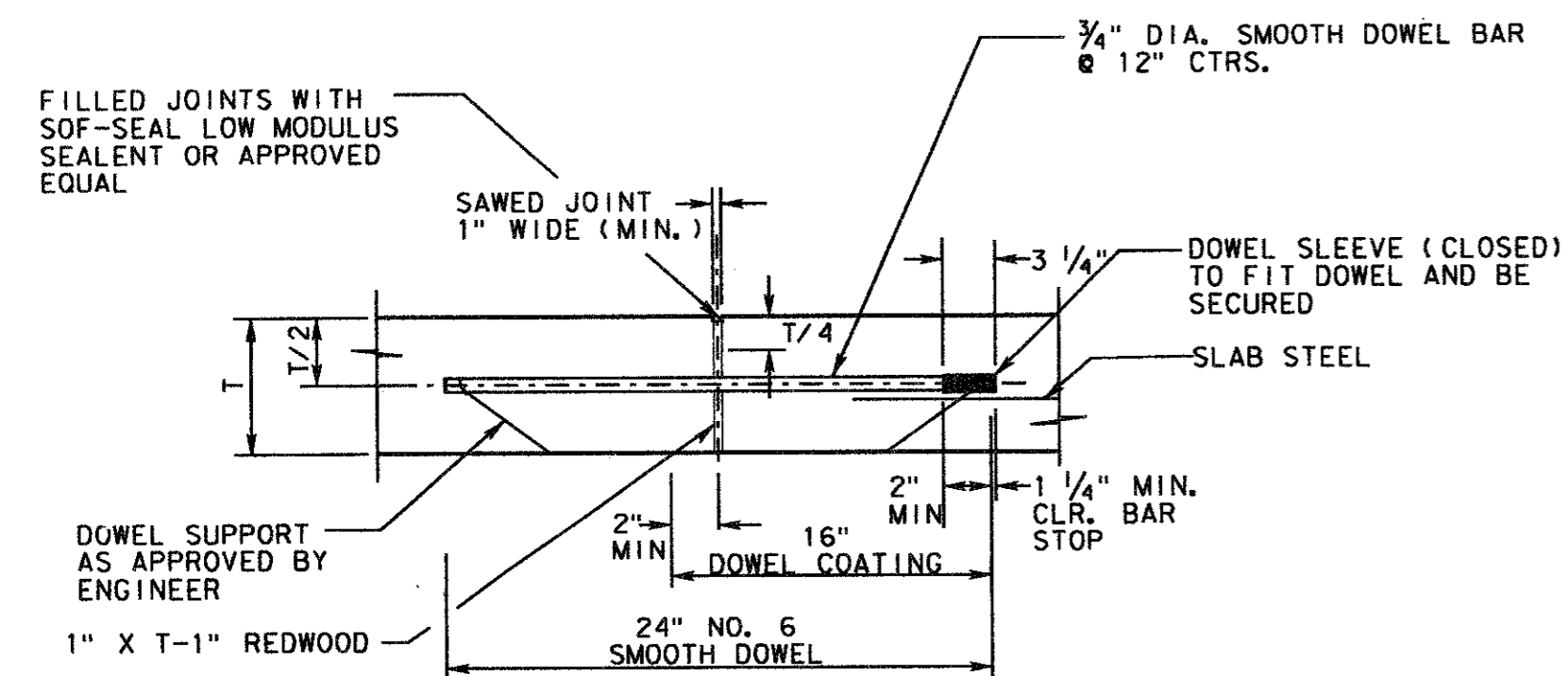
FOR 8" THICKNESS PAVEMENT AND LONGITUDINAL JOINTS

NOTE: CONTRACTOR SHALL PROTECT KEYWAY PRIOR TO SECOND POUR. IF LONGITUDINAL KEYWAY IS DAMAGED, CONTRACTOR SHALL REPAIR WITH THE USE OF LONGITUDINAL BUTT JOINT. DRILL DOWELS INTO FIRST POUR. T=PAVEMENT THICKNESS THICKENED EDGES ARE REQUIRED FOR FUTURE WIDENING ONLY.



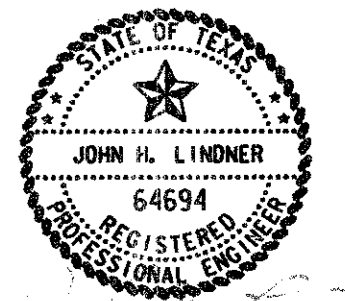
LOCATE FORCE MAIN MARKERS ON CENTERLINE AT 300 FEET MAXIMUM SPACING AND AS SHOWN ON PLANS. NOT A SEPERATE PAY ITEM.

FORCE MAIN MARKER DETAIL



TRANSVERSE EXPANSION JOINT

NOTES: 1. DOWEL SPACER TO BE PLACED ON FIRST Poured SIDE OF DOWELS. 2. SPACER SHALL BE ALIGNED SUCH THAT DOWELS ARE PARALLEL TO EACH OTHER, AND PERPENDICULAR TO REDWOOD.



4			
3			
2			
1			
NO.	DATE	REVISION	APPROV.

TOWN OF ADDISON, TEXAS  
MIDWAY/BELTLINE SANITARY SEWER  
PAVING DETAILS  
( )

**Carter & Burgess**  
Consultants in Engineering, Architecture,  
Planning and the Environment  
CARTER & BURGESS, INC.  
7950 ELMBROOK DRIVE, SUITE 250  
DALLAS, TX 75247-4961

Unit	Scale	1" = 2'	Date	03-23-95
Designed	D. Moore	Checked	J. Lindner	Job No. 93327601D
Drawn	B. Sowell	Approved	J. Lindner	Sheet 11 of 11