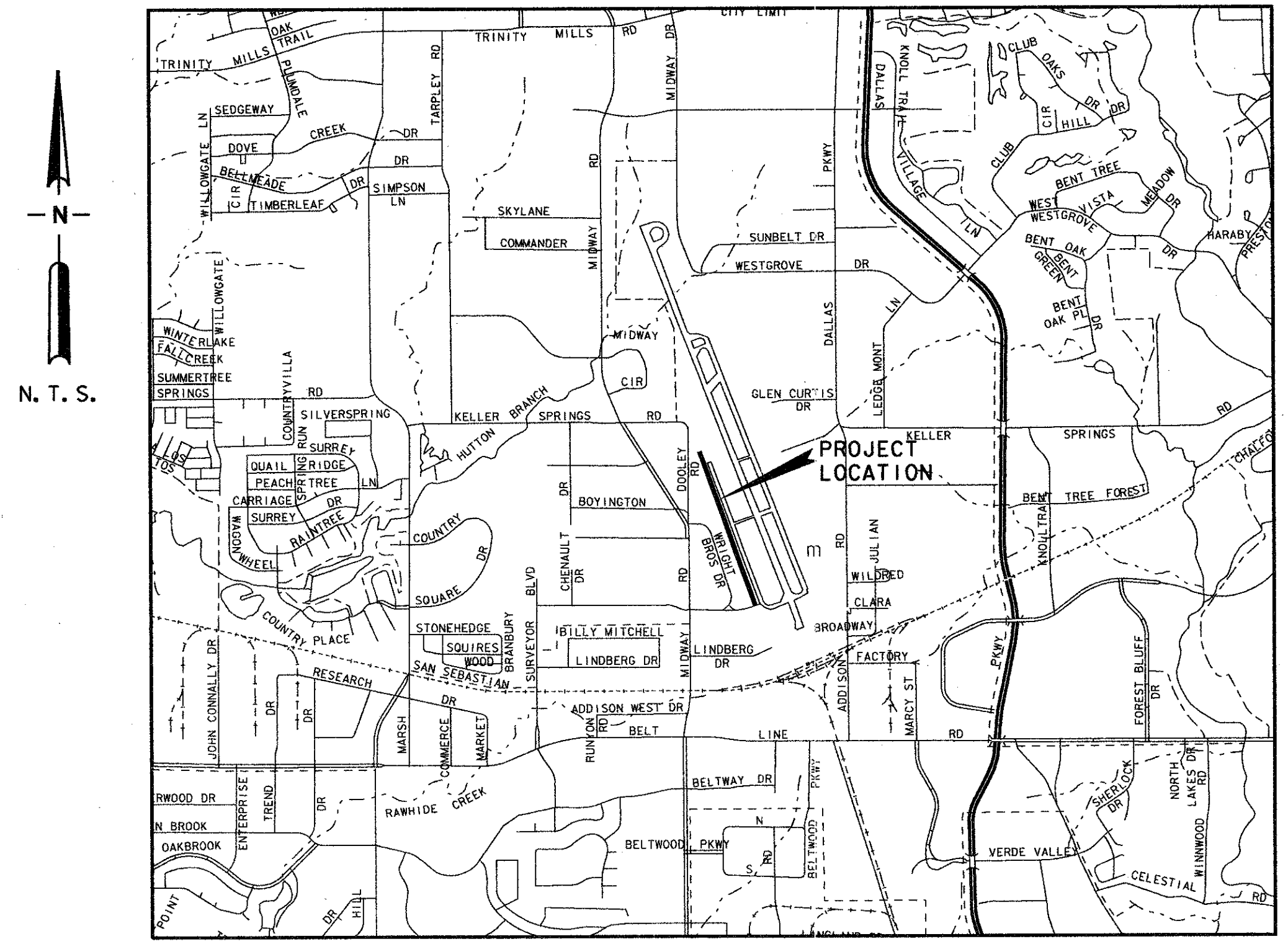
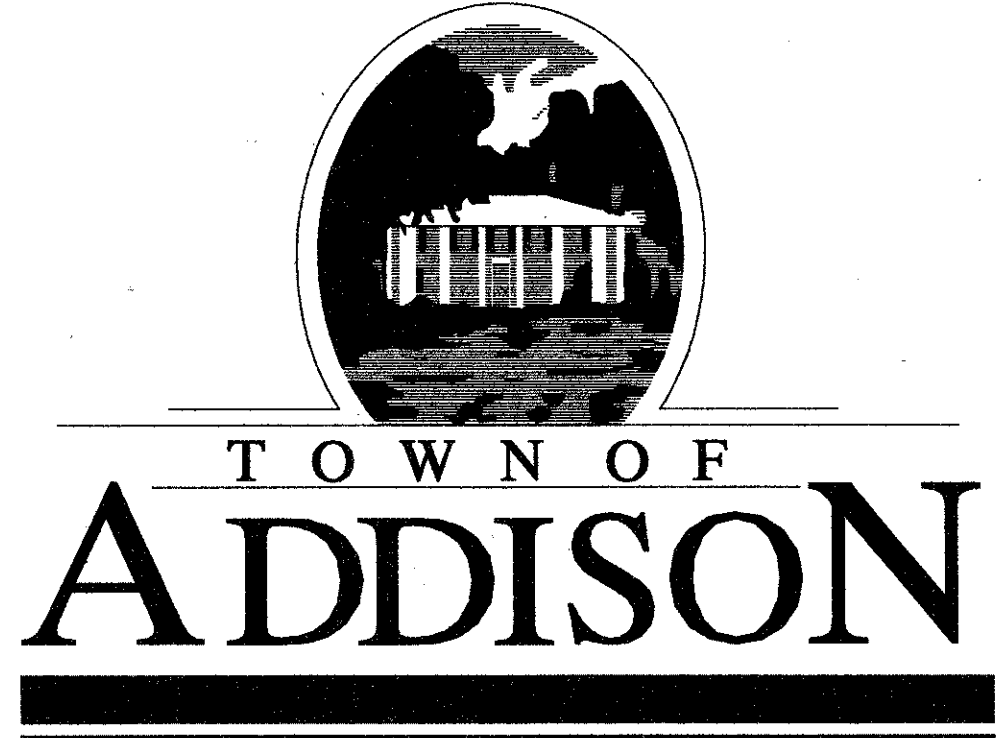


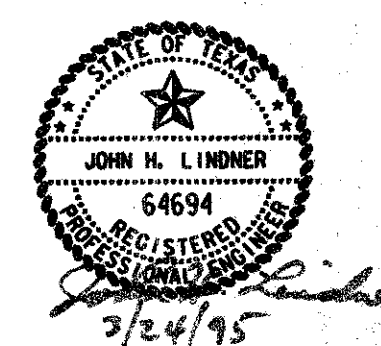
AI-10

TOWN OF ADDISON, TEXAS MIDWAY/BELTLINE SEWER INTERCEPTOR

PHASE I
ADDISON AIRPORT
MARCH 1995



VICINITY MAP



SUBMITTED BY:
CARTER & BURGESS, INC. *John Lindner* 3/24/95
John Lindner - Project Manager Date

APPROVED BY:
TOWN OF ADDISON _____
John Baumgartner - Director of Public Works Date

CONSTRUCTION SET
ISSUED BY
TOWN OF ADDISON
PUBLIC WORKS DEPARTMENT
NAME: *David Nighswonger* DATE: *5/31/95*

Carter & Burgess
Consultants in Engineering, Architecture,
Planning and the Environment
CARTER & BURGESS, INC.
7950 ELMBROOK DRIVE, SUITE 250
DALLAS, TX 75247-4961

ISSUE 1: WACO, TEXAS
DATE: 03/24/95
BY: J. LINDNER

LEVELS ON: 1"=80'
DATE: 03/24/95
BY: J. LINDNER

MIDWAY/BELTLINE SEWER INTERCEPTOR - PHASE I - ADDISON AIRPORT

AI-10

GENERAL NOTES

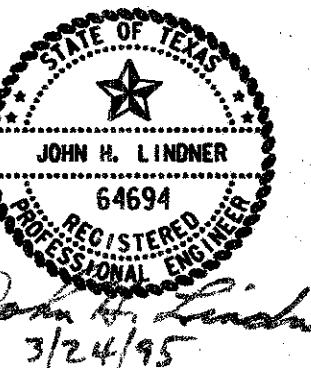
1. All sewer main construction shall conform to the minimum requirements of the Texas Natural Resource Conservation Commission (TNRCC) Rules and Regulations for public water and sewer systems. In particular, Title 30 Texas Administrative Code Chapter 317.2 - Design Criteria for Sewerage Systems.
2. All construction shall conform to the requirements as stated in the "Standard Specifications For Public Works Construction, North Central Texas Council of Governments" (latest edition).
3. All 8" thru 12" force mains shall be Class 200, AWWA C900, P.V.C. pipe.
4. Depth of sewer line shall be adjusted as necessary to avoid conflicts with other underground utilities. No separate pay for use of vertical bends or additional depth of cut.
5. All mains shall be tested in accordance with TNRCC Chapter 317.2 testing requirements as shown in the specifications. Not a separate pay item.
6. All sanitary sewer pipe joints shall be SDR 35 (P.S. 46) PVC ASTM D3034 (green in color), unless otherwise noted.
7. The Contractor shall be required to provide and maintain all necessary warning and safety devices (flashing lights, barricades, signs, etc.) in accordance with Texas Manual on Uniform Traffic Control Devices to protect the public safety and health until all the work has been completed and accepted by the City. Not a separate pay item.
8. The locations of existing utilities indicated on these plans are taken from existing public records. The Contractor is solely responsible for verification of vertical and horizontal location of all utilities prior to construction. Additional utilities and services may be crossing proposed sanitary sewer line. Contractor shall notify all utility companies with facilities in project area 48 hours prior to construction. Contractor is responsible for repairing damage to existing utilities, whether shown or not shown on plans, at no additional cost to the City.
9. All expansion joints shall be subsidiary to pavement replacement.
10. All sawcuts are to be full depth unless otherwise indicated on plans.
11. All dimensions to curbline are referenced to the back of curb unless otherwise noted. Curb removal/replacement is subsidiary to pavement removal/replacement.
12. All trees shall be protected from damage unless specifically designated for removal on the plans.
13. All embedment and backfill to be included in the unit prices for installation of pipe.
14. The Contractor shall notify the following, five (5) days before starting work on the improvements shown on these plans.
 - a. Addison Airport of Texas, Inc. - Mr. Edward Morales (214) 248-7733 ext. 105
 - b. FAA - Mr. Curtis Gray (214) 490-4750
 - c. SW Bell Telephone ENTERPRISE 9800
 - d. GTE Telephone (214) 318-3880
 - e. TU Electric (214) 323-8910
 - f. Lone Star Gas (214) 263-3444
 - g. Storer Cable (214) 840-2288
 - h. Conoco Pipeline (800) 833-6012
 - i. Explorer Pipeline (918) 493-5100
 - j. Sprint (800) 245-4545
15. The Contractor shall notify the following, five days before starting work on the improvements in order to coordinate construction, administration, and inspection activities.
 - a. City of Addison - Construction Inspection (214) 450-2847
16. The Contractor shall dispose of waste pavement, concrete, pipe, unacceptable soil, etc. in an approved offsite landfill. This shall be subsidiary to the unit price of pipe installation.
17. Unpaved areas disturbed by construction are to be hydromulched or sodded at the direction of the Engineer, fertilized and watered per NCTCOG specifications. No separate payment for seeding, sodding, fertilizing, watering and related work. All costs for this work are considered incidental and are to be included in the unit prices for installation of pipe.
18. All sprinkler systems and related components of sprinkler systems and fences, signs, etc. disturbed by construction are to be restored to existing condition. No separate payment for this work. All costs are considered incidental and are to be included in the unit prices for installation of pipe.
19. Contractor, at his own expense, shall be responsible for the repair of any facility damaged, and immediate notice shall be given to property owner and repaired within four hours.
20. Unless otherwise noted, all materials will conform to the "Standard Specifications for Public Works Construction for North Central Texas", (latest edition) and the Town of Addison Standards.
21. In the event an item is not covered in the Specifications, the City Engineer's decision will apply.
22. Where sanitary sewer pressure pipe parallels water a minimum clearance of 2.0' vertical and 9.0' horizontal shall be maintained. Where sewer line crosses existing water line a minimum of 6" clearance shall be maintained with one joint of sewer pipe centered on water line.
23. Trench excavation for trenches 5 feet or more in depth shall be in accordance with all provisions of Part 1926, Subpart P - Excavations, Trenching and Shoring of the Occupational Safety and Health's Standards and Interpretations. It shall be the responsibility of the Contractor to conform to the above provisions.
24. The Contractor shall maintain continuous mail service to all residences in the construction area. Should it become necessary to remove existing mail boxes the Contractor shall erect temporary facilities and coordinate delivery with the Postmaster. Following construction, the Contractor shall permanently replace all mail boxes in accordance with U.S. Postal regulations.

Maintaining continuous mail service, establishment of temporary facilities, and permanent replacement of mail boxes after construction are subsidiary to the item being installed.
25. If temporary sanitary sewer by-pass is required, the Contractor shall coordinate with the Town of Addison Department of Public Works five (5) working days prior to anticipated shut-down. Prior to installing the by-pass lines, the Contractor shall have on site all men, materials and equipment necessary to complete the by-pass without delays. The by-pass assemblies shall be fully assembled and ready for installation prior to shut-down of the existing system. Any required temporary by-passing shall be considered incidental and not a separate pay item.
26. Thrust blocking required at all bends unless otherwise indicated on plans and shall be included in unit price of pipe installation.
27. All force main pipe shall be white in color.
28. Terra-Tape required the length of force main installed one (1) foot above main. Tape to read "Sanitary Sewer". This shall be incidental to the cost of installing the pipe.
29. Contractor shall maintain access to properties and shall repair driveways within forty-eight (48) hours of pavement removal. For all pavement replacement use Type I cement with appropriate ASTM C494 admixtures.
30. Contractor shall obtain Fire Department and Street Cutting Permits.

31. For all work inside Addison Airport property, Contractor must supply, at his cost, radios compatible with the Control Tower to be employed at all times during construction.

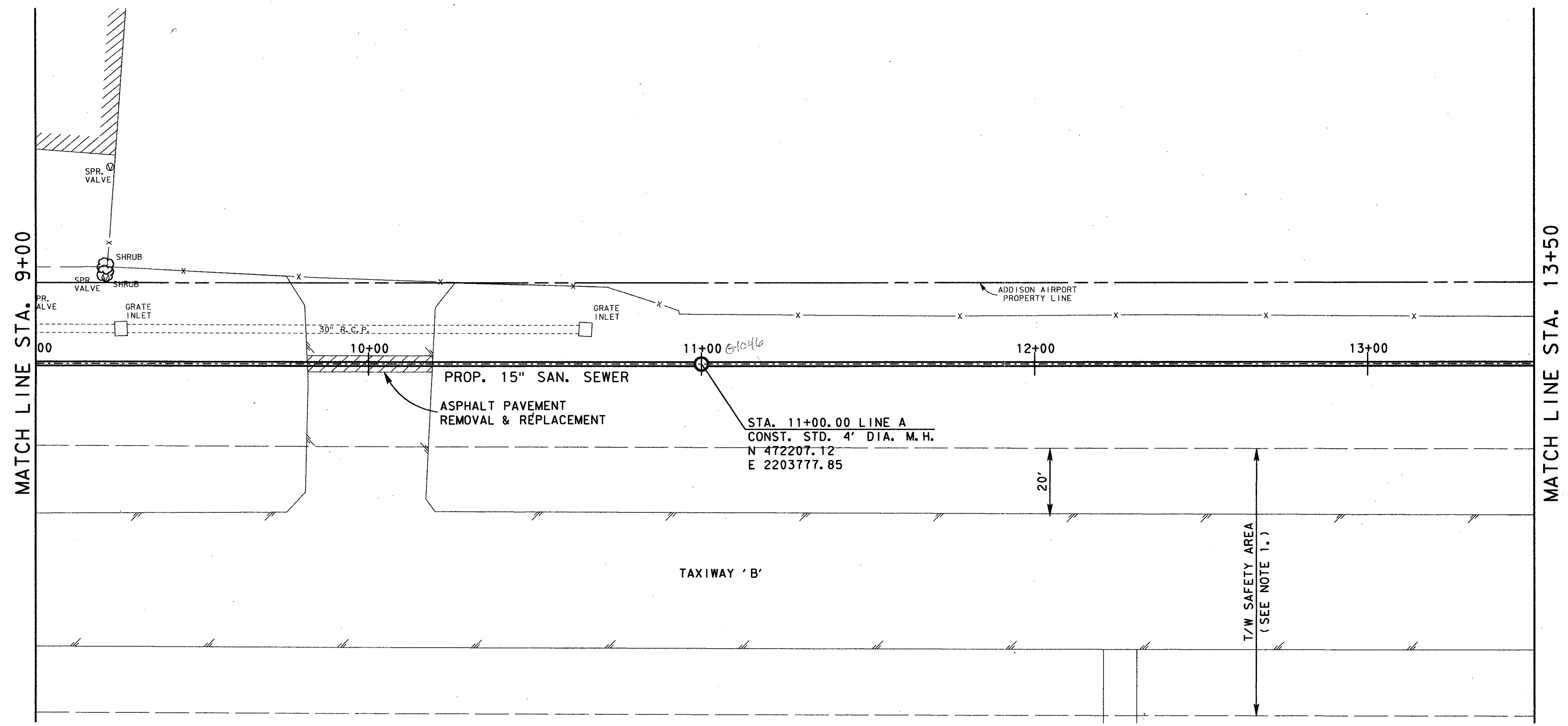
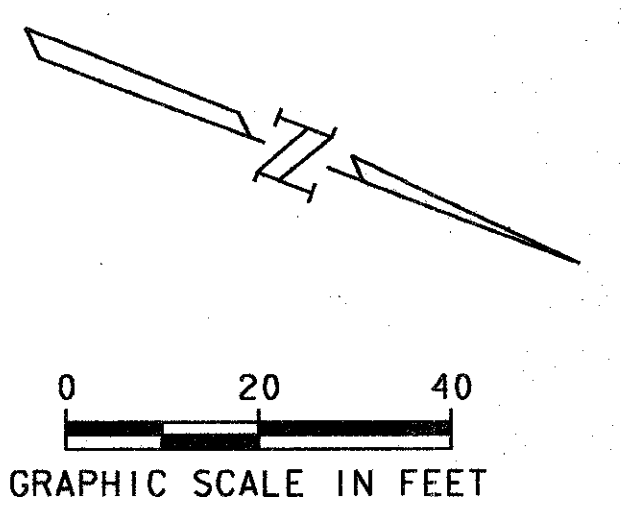
BENCHMARKS			
DESCRIPTION	ELEVATION	NORTHING	EASTING
"X" CUT IN BRAK-O PARKING LOT APPROXIMATELY 5 FEET EAST OF SIGN.	624.95	470,653.9352	2,203,023.5463
"X" CUT IN CONCRETE ENTRANCE OF PARKING LOT SOUTH SIDE OF WILEY POST ROAD APPROXIMATELY 150 FEET EAST OF MIDWAY.	635.26	471,165.8800	2,203,249.3273

ESTIMATED QUANTITIES			
ITEM	DESCRIPTION	UNIT	QUANTITY
1	8" PVC (DR-14) FORCE MAIN INCLUDING EXCAVATION, EMBEDMENT, BACKFILL AND THRUST BLOCKING	LF	693
2	12" PVC (DR-14) FORCE MAIN INCLUDING EXCAVATION, EMBEDMENT, BACKFILL AND THRUST BLOCKING	LF	693
3	15" PVC (SDR-35) SANITARY SEWER	LF	2060
4	24" STEEL CASING PIPE BY BORE	LF	20
5	REMOVE AND REPLACE CONCRETE PAVEMENT INCLUDING CURB AND STABILIZED SUBGRADE	SY	261
6	REMOVE AND REPLACE ASPHALT PAVEMENT INCLUDING CURB AND STABILIZED SUBGRADE	SY	53
7	CONSTRUCT 4-FOOT DIAMETER MANHOLE	EA	4
8	CONSTRUCT 5-FOOT DIAMETER MANHOLE	EA	1
9	SAW CUTTING PAVEMENT	LF	1039
10	FURNISH, INSTALL AND IMPLEMENT TRENCH SAFETY SYSTEM	LF	2753
11	FURNISH TRENCH SAFETY DESIGN	LS	1
12	FURNISH AND INSTALL 8" PLUG	EA	1
13	FURNISH AND INSTALL 12" PLUG	EA	1
14	FURNISH AND INSTALL 15" PLUG	EA	1
15	REMOVE AND REPLACE 12" RCP CULVERT w/ HEADWALLS	LF	52

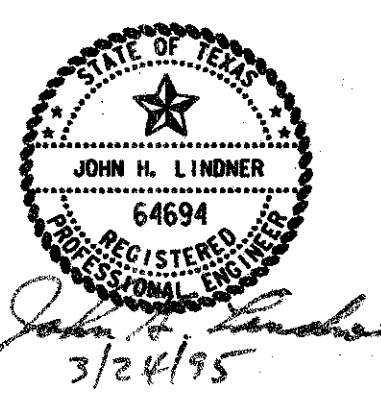
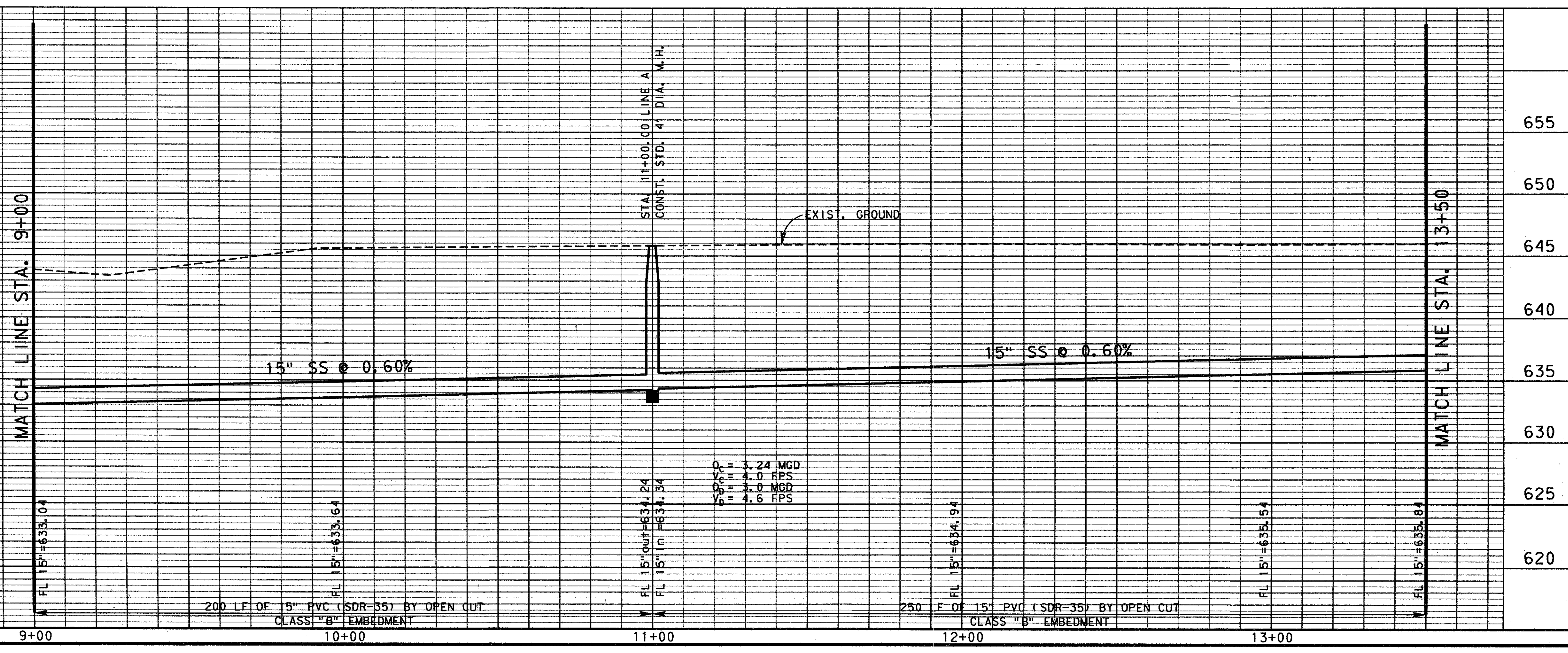


4			
3			
2			
1			
NO.	DATE	REVISION	APPROV.
TOWN OF ADDISON, TEXAS			
MIDWAY/BELTLINE SANITARY SEWER			
GENERAL NOTES			
 Carter & Burgess <small>Consultants in Engineering, Architecture, Planning and the Environment</small> CARTER & BURGESS, INC. <small>7950 ELMBROOK DRIVE, SUITE 250 DALLAS, TX 75247-4961</small>			
Unit	Scale	Date	03-23-95
Designed	D. Moore	Checked	J. Lindner
Job No.	93327601D		
Drawn	B. Sowell	Approved	J. Lindner
Sheet	2 of 11		

DESIGN AND PREPARED BY: J. LINDNER
 DATE: 03-23-95
 DRAWN BY: B. SOWELS
 CHECKED BY: J. LINDNER
 APPROVED BY: J. LINDNER
 PROJECT NO.: 93327601D
 SHEET NO.: 5 OF 11
 TOWN OF ADDISON, TEXAS
 MIDWAY/BELTLINE SANITARY SEWER
 SANITARY SWR. PLAN & PROFILE
 FROM STATION 9+00 TO STATION 13+50



- NOTES:
1. CONTRACTOR SHALL BE PROHIBITED FROM ACCESSING OR CONDUCTING ANY ACTIVITIES WITHIN THE T/W SAFETY AREA.
 2. CONTRACTOR SHALL RESTRICT ACCESS TO CONSTRUCTION AREA FROM WILEY POST RD.



NO.	DATE	REVISION	APPROV.
4			
3			
2			
1			

TOWN OF ADDISON, TEXAS
 MIDWAY/BELTLINE SANITARY SEWER
 SANITARY SWR. PLAN & PROFILE
 FROM STATION 9+00 TO STATION 13+50

Carter & Burgess
 Consultants in Engineering, Architecture,
 Planning and the Environment
 CARTER & BURGESS, INC.
 7950 EMBROOK DRIVE, SUITE 250
 DALLAS, TX 75247-4961

Unit	Scale	HORIZ. 1"=20' VERT. 1"=5'	Date	03-23-95	
Designed	D. Moore	Checked	J. Lindner	Job No.	93327601D
Drawn	B. Sowels	Approved	J. Lindner	Sheet	5 of 11

3276023.DGN

DESIGN AND PREPARED BY: J. LINDNER
 DATE: 03-23-95
 PROJECT NO.: 93327601D
 SHEET NO.: 6 OF 11

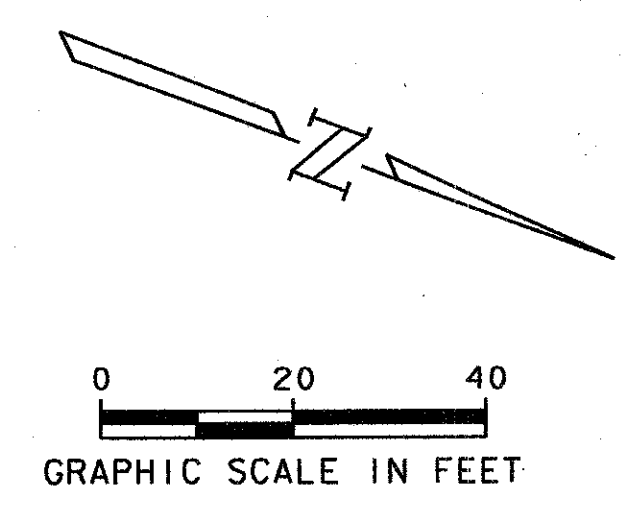
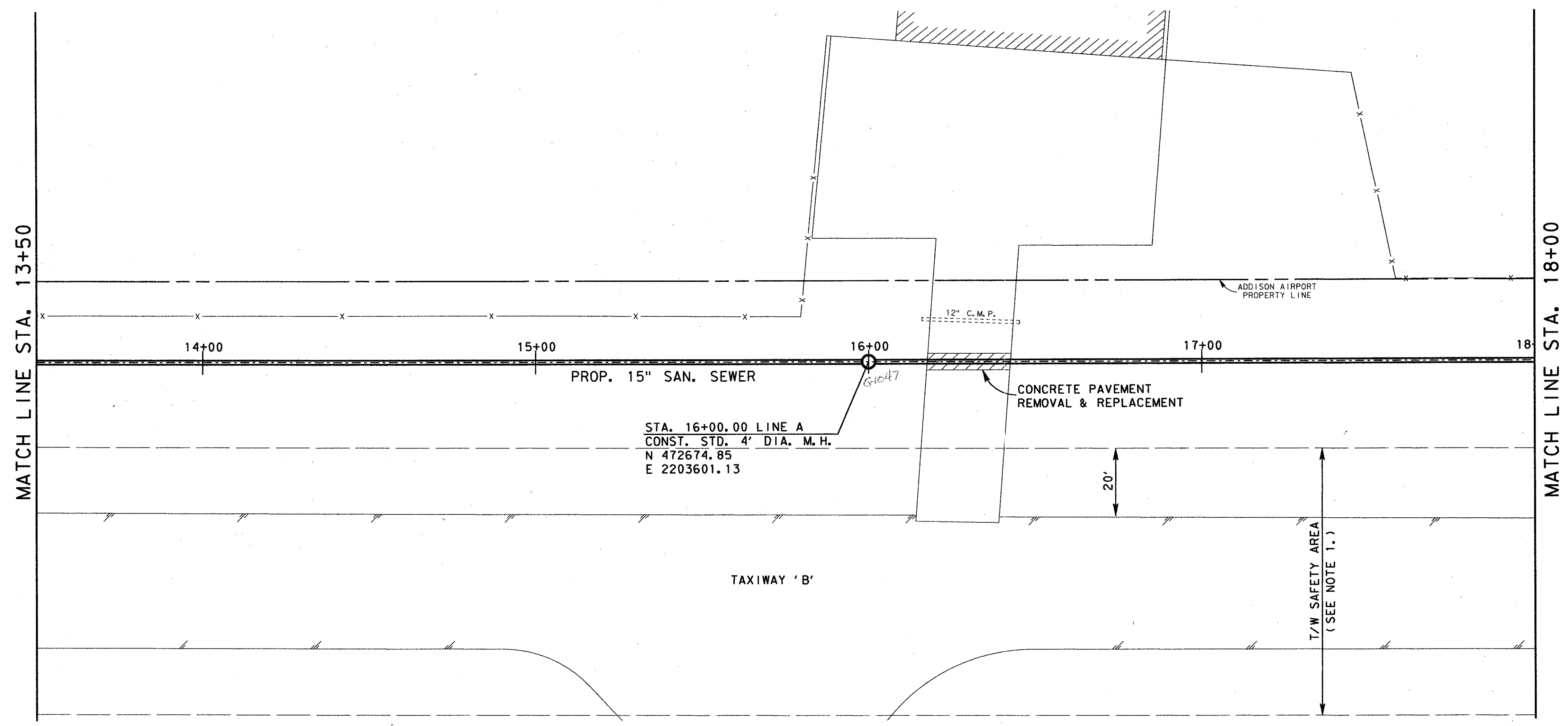
DATE: 03-23-95
 DRAWN BY: B. SOWLES
 CHECKED BY: J. LINDNER
 APPROVED BY: J. LINDNER

ALIGNMENT
 PROFILE

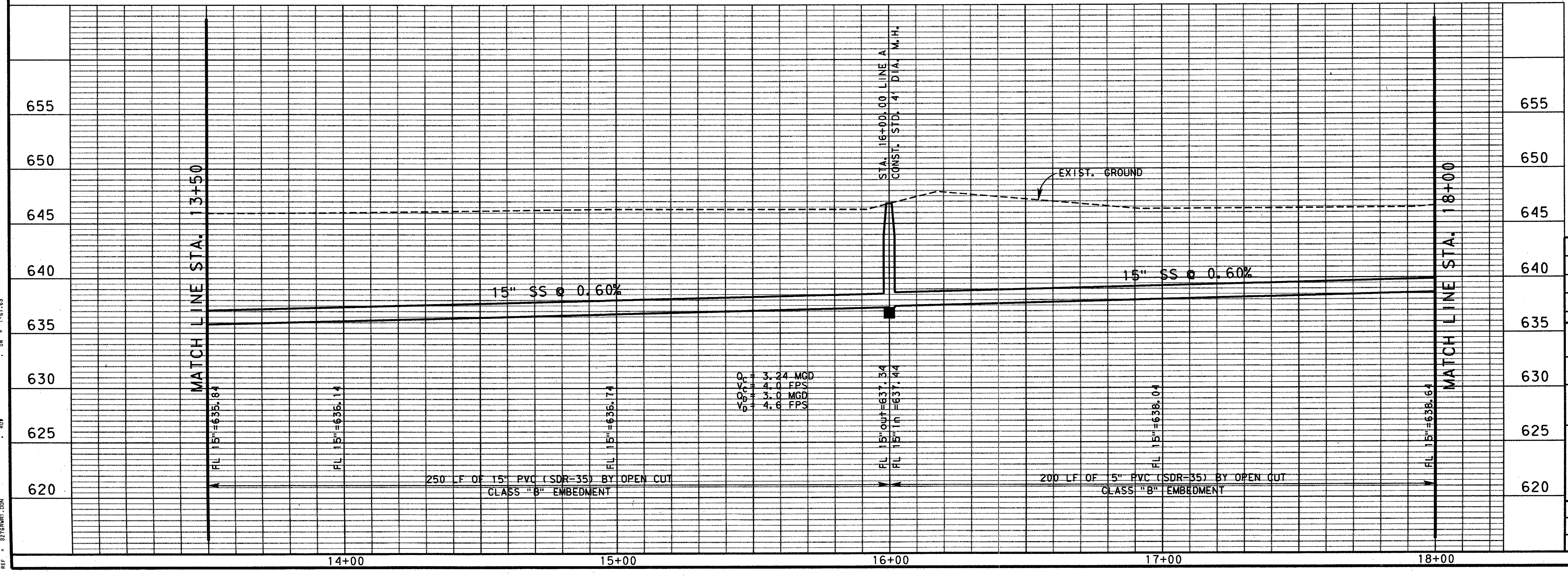
REF: 327601.DGN
 REF: 327601.DGN
 REF: 327601.DGN

LEVELS ON: 1"=2'
 VERT: 1"=5'

DATE: 03-23-95
 DRAWN BY: B. SOWLES
 CHECKED BY: J. LINDNER
 APPROVED BY: J. LINDNER



- NOTES:
1. CONTRACTOR SHALL BE PROHIBITED FROM ACCESSING OR CONDUCTING ANY ACTIVITIES WITHIN THE T/W SAFETY AREA.
 2. CONTRACTOR SHALL RESTRICT ACCESS TO CONSTRUCTION AREA FROM WILEY POST RD.



NO.	DATE	REVISION	APPROV.
4			
3			
2			
1			

TOWN OF ADDISON, TEXAS
 MIDWAY/BELTLINE SANITARY SEWER
 SANITARY SWR. PLAN & PROFILE
 FROM STATION 13+50 TO STATION 18+00

Carter Burgess
 Consultants in Engineering, Architecture,
 Planning and the Environment
 CARTER & BURGESS, INC.
 7550 EMBROOK DRIVE, SUITE 250
 DALLAS, TX 75247-4961

John H. Lindner
 3/24/95

Unit	Scale	Hor 1" = 20'	Ver 1" = 5'	Date	03-23-95
Designed	D. Moore	Checked	J. Lindner	Job No.	93327601D
Drawn	B. Sowles	Approved	J. Lindner	Sheet	6 of 11

327601.DGN

SEE: NO. 1000000000
 REF. ST. 0.00000
 11/11/11 10:11:11

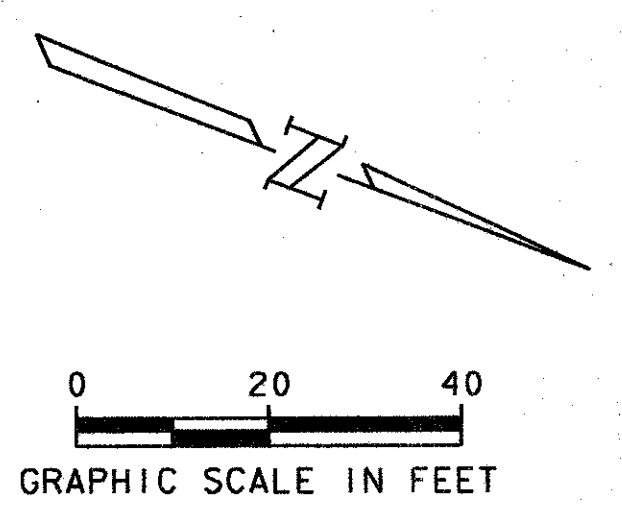
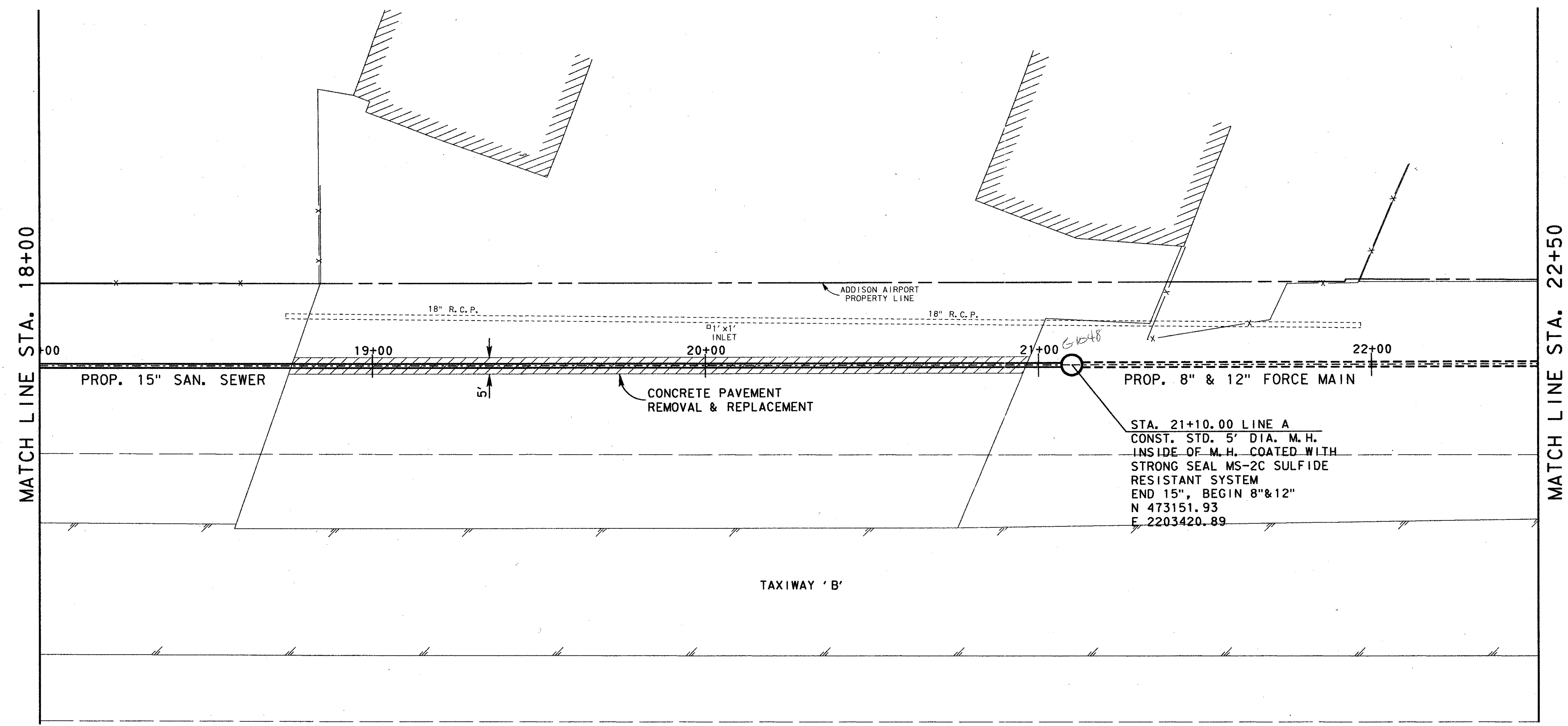
DN = 1.50
 DN = 1.50
 DN = 1.50

ALCON
 BORFILE

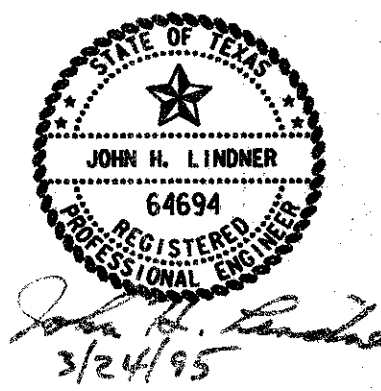
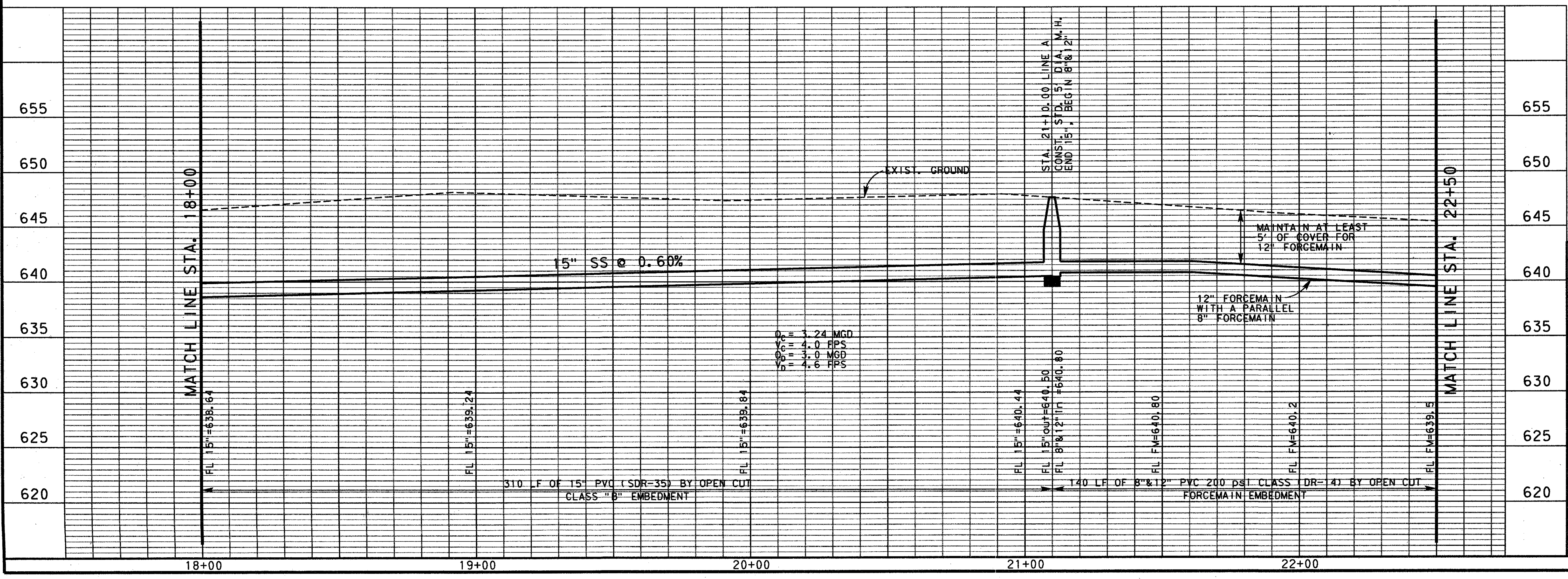
REF = 3/27/2010
 REF = 3/27/2010

LEVELS ON = 1.50
 DITL = 1.50
 ON = 1.50

NO. 1000000000
 DITL = 1.50
 ON = 1.50



- NOTES:
- CONTRACTOR SHALL BE PROHIBITED FROM ACCESSING OR CONDUCTING ANY ACTIVITIES WITHIN THE T/W SAFETY AREA.
 - CONTRACTOR SHALL RESTRICT ACCESS TO CONSTRUCTION AREA FROM WILEY POST RD.



NO.	DATE	REVISION	APPROV.
4			
3			
2			
1			

TOWN OF ADDISON, TEXAS
 MIDWAY/BELTLINE SANITARY SEWER
 SANITARY SWR. PLAN & PROFILE
 FROM STATION 18+00 TO STATION 22+50

Carter Burgess
 Consultants in Engineering, Architecture,
 Planning and the Environment.
 CARTER & BURGESS, INC.
 7950 ELMBROOK DRIVE, SUITE 250
 DALLAS, TX 75247-4961

Unit	Scale	Horiz. 1"=20' Vert. 1"=5'	Date	03-23-95
Designed	D. Moore	Checked	J. Lindner	Job No. 93327601D
Drawn	B. Sowell	Approved	J. Lindner	Sheet 7 of 11

3276625.DGN

DATE: 03-23-95
 BY: J. LINDNER
 CHECKED: B. SOWIS
 PROJECT: MIDWAY/BELTLINE SANITARY SEWER

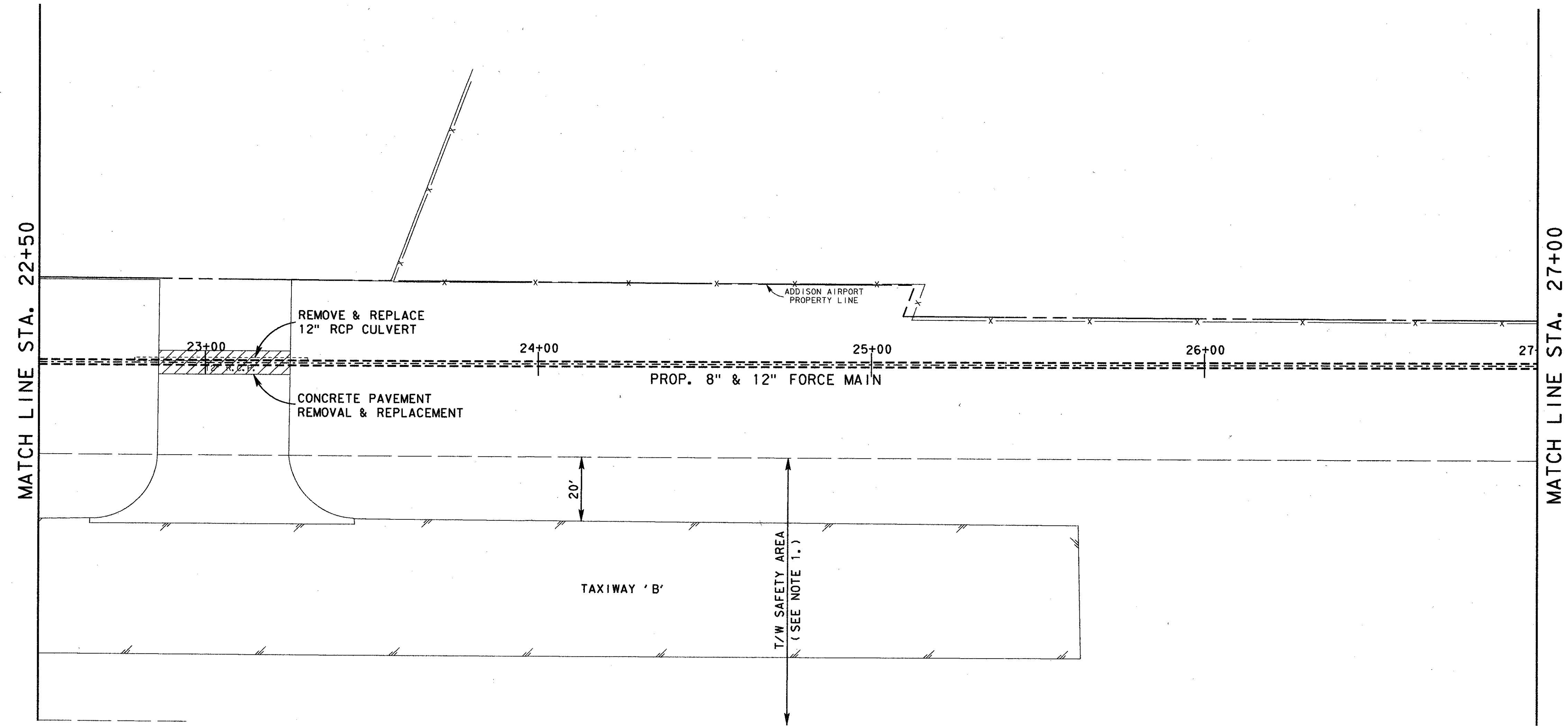
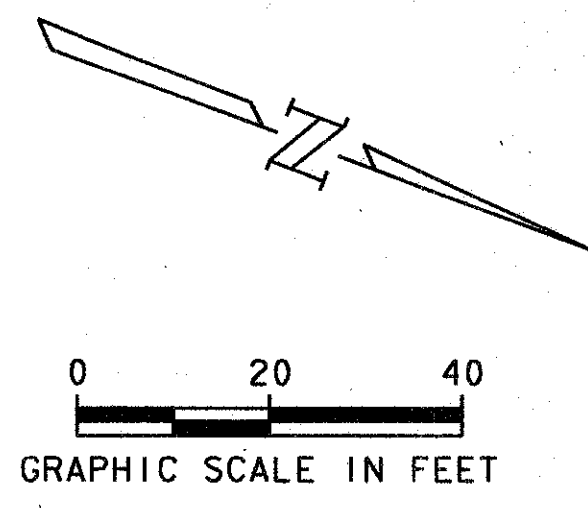
ON: 1-83
 OFF: 1-83, 2-83, 3-83

ALTON
 PROFILE

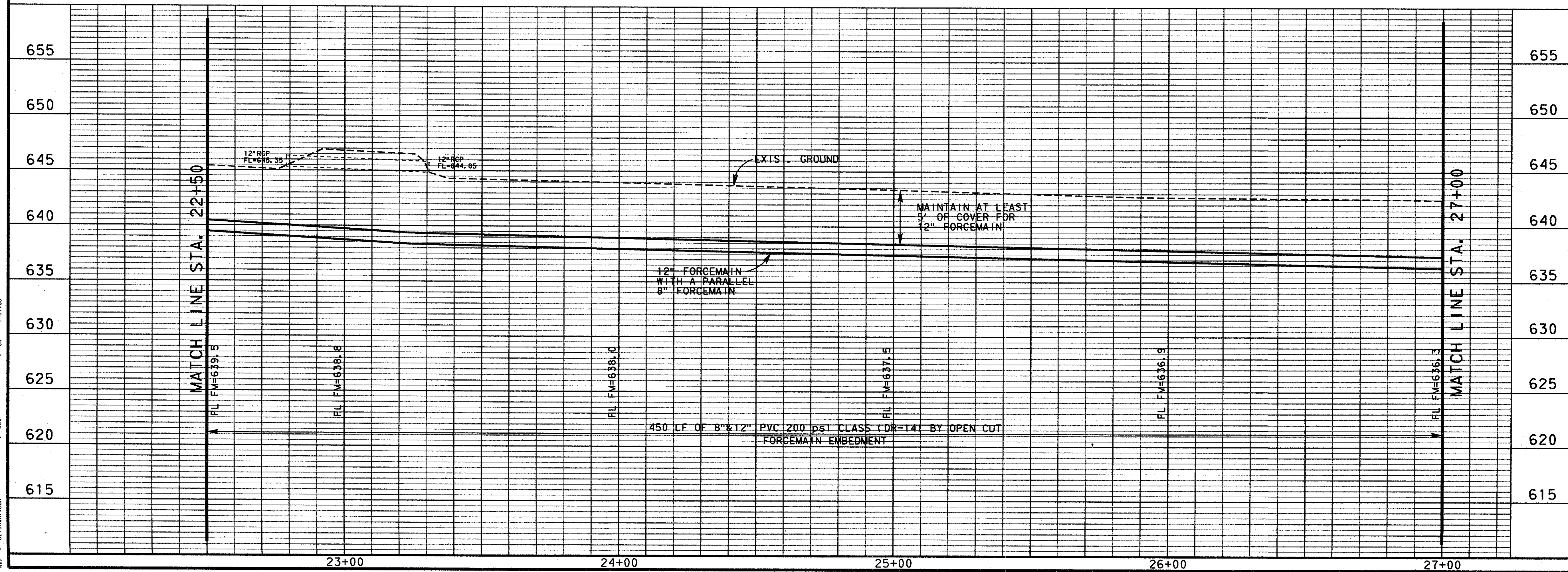
REF: 2776481.DGN
 REF: 2776481.DGN
 REF: 2776481.DGN

LEVELS ON: 1-83
 ON: 1-83, 2-83, 3-83

FILE: W:\704\3765261.PRF
 REF: 2776481.DGN
 REF: 2776481.DGN
 REF: 2776481.DGN



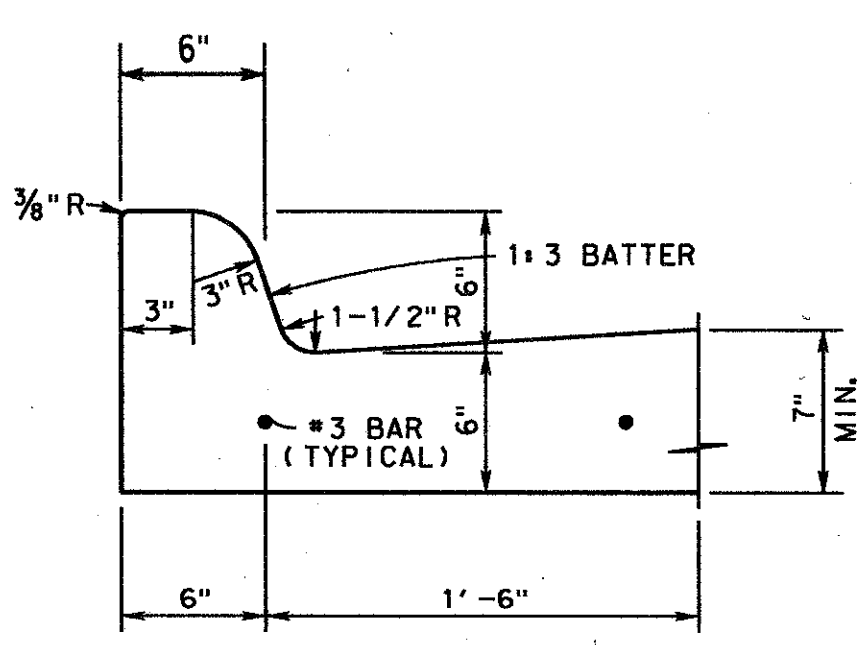
- NOTES:
- CONTRACTOR SHALL BE PROHIBITED FROM ACCESSING OR CONDUCTING ANY ACTIVITIES WITHIN THE T/W SAFETY AREA.
 - CONTRACTOR SHALL RESTRICT ACCESS TO CONSTRUCTION AREA FROM WILEY POST RD.



4			
3			
2			
1			
NO.	DATE	REVISION	APPROV.
TOWN OF ADDISON, TEXAS			
MIDWAY/BELTLINE SANITARY SEWER			
SANITARY SWR. PLAN & PROFILE FROM STATION 22+50 TO STATION 27+00			
Carter & Burgess <small>Consultants in Engineering, Architecture, Planning and the Environment</small> CARTER & BURGESS, INC. <small>7960 ELMBROOK DRIVE, SUITE 250 DALLAS, TX 75247-4961</small>			
Unit	Scale	Hor: 1"=20' Ver: 1"=5'	Date 03-23-95
Designed	D. Moore	Checked	J. Lindner
Drawn	B. Sowis	Approved	J. Lindner
		Job No.	93327601D
		Sheet	8 of 11
3276826.DGN			

JOHN H. LINDNER
 REGISTERED PROFESSIONAL ENGINEER
 3/24/95

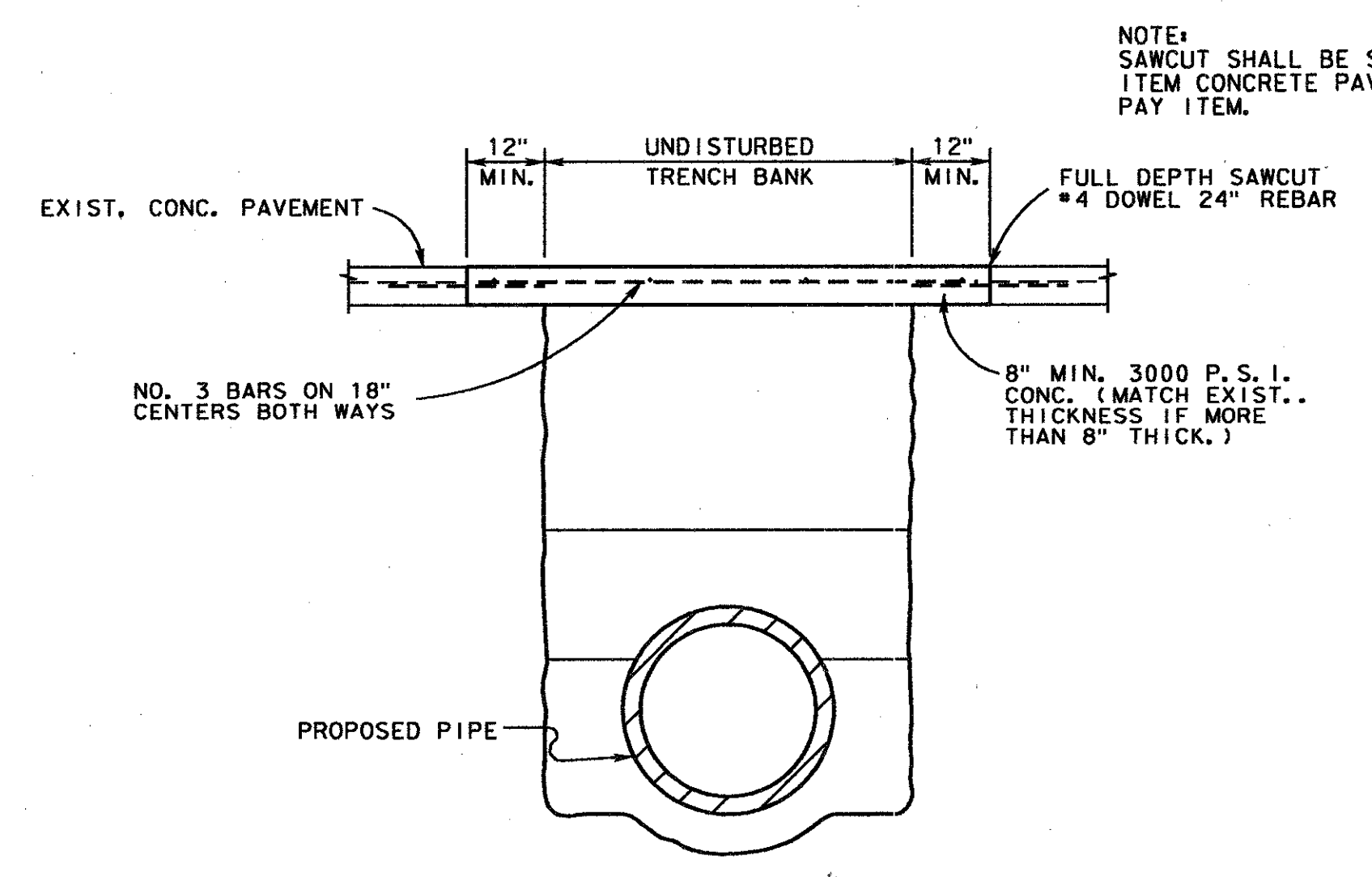
1. AND, FOR USE IN THE STATE OF TEXAS, THE ENGINEER'S SEAL AND SIGNATURE SHALL BE PLACED IN THE SPACE PROVIDED HEREON.
 2. THE ENGINEER'S SEAL AND SIGNATURE SHALL BE PLACED IN THE SPACE PROVIDED HEREON.
 3. THE ENGINEER'S SEAL AND SIGNATURE SHALL BE PLACED IN THE SPACE PROVIDED HEREON.
 4. THE ENGINEER'S SEAL AND SIGNATURE SHALL BE PLACED IN THE SPACE PROVIDED HEREON.
 5. THE ENGINEER'S SEAL AND SIGNATURE SHALL BE PLACED IN THE SPACE PROVIDED HEREON.
 6. THE ENGINEER'S SEAL AND SIGNATURE SHALL BE PLACED IN THE SPACE PROVIDED HEREON.
 7. THE ENGINEER'S SEAL AND SIGNATURE SHALL BE PLACED IN THE SPACE PROVIDED HEREON.
 8. THE ENGINEER'S SEAL AND SIGNATURE SHALL BE PLACED IN THE SPACE PROVIDED HEREON.
 9. THE ENGINEER'S SEAL AND SIGNATURE SHALL BE PLACED IN THE SPACE PROVIDED HEREON.
 10. THE ENGINEER'S SEAL AND SIGNATURE SHALL BE PLACED IN THE SPACE PROVIDED HEREON.
 11. THE ENGINEER'S SEAL AND SIGNATURE SHALL BE PLACED IN THE SPACE PROVIDED HEREON.
 12. THE ENGINEER'S SEAL AND SIGNATURE SHALL BE PLACED IN THE SPACE PROVIDED HEREON.
 13. THE ENGINEER'S SEAL AND SIGNATURE SHALL BE PLACED IN THE SPACE PROVIDED HEREON.
 14. THE ENGINEER'S SEAL AND SIGNATURE SHALL BE PLACED IN THE SPACE PROVIDED HEREON.
 15. THE ENGINEER'S SEAL AND SIGNATURE SHALL BE PLACED IN THE SPACE PROVIDED HEREON.
 16. THE ENGINEER'S SEAL AND SIGNATURE SHALL BE PLACED IN THE SPACE PROVIDED HEREON.
 17. THE ENGINEER'S SEAL AND SIGNATURE SHALL BE PLACED IN THE SPACE PROVIDED HEREON.
 18. THE ENGINEER'S SEAL AND SIGNATURE SHALL BE PLACED IN THE SPACE PROVIDED HEREON.
 19. THE ENGINEER'S SEAL AND SIGNATURE SHALL BE PLACED IN THE SPACE PROVIDED HEREON.
 20. THE ENGINEER'S SEAL AND SIGNATURE SHALL BE PLACED IN THE SPACE PROVIDED HEREON.
 21. THE ENGINEER'S SEAL AND SIGNATURE SHALL BE PLACED IN THE SPACE PROVIDED HEREON.
 22. THE ENGINEER'S SEAL AND SIGNATURE SHALL BE PLACED IN THE SPACE PROVIDED HEREON.
 23. THE ENGINEER'S SEAL AND SIGNATURE SHALL BE PLACED IN THE SPACE PROVIDED HEREON.
 24. THE ENGINEER'S SEAL AND SIGNATURE SHALL BE PLACED IN THE SPACE PROVIDED HEREON.
 25. THE ENGINEER'S SEAL AND SIGNATURE SHALL BE PLACED IN THE SPACE PROVIDED HEREON.
 26. THE ENGINEER'S SEAL AND SIGNATURE SHALL BE PLACED IN THE SPACE PROVIDED HEREON.
 27. THE ENGINEER'S SEAL AND SIGNATURE SHALL BE PLACED IN THE SPACE PROVIDED HEREON.
 28. THE ENGINEER'S SEAL AND SIGNATURE SHALL BE PLACED IN THE SPACE PROVIDED HEREON.
 29. THE ENGINEER'S SEAL AND SIGNATURE SHALL BE PLACED IN THE SPACE PROVIDED HEREON.
 30. THE ENGINEER'S SEAL AND SIGNATURE SHALL BE PLACED IN THE SPACE PROVIDED HEREON.
 31. THE ENGINEER'S SEAL AND SIGNATURE SHALL BE PLACED IN THE SPACE PROVIDED HEREON.
 32. THE ENGINEER'S SEAL AND SIGNATURE SHALL BE PLACED IN THE SPACE PROVIDED HEREON.
 33. THE ENGINEER'S SEAL AND SIGNATURE SHALL BE PLACED IN THE SPACE PROVIDED HEREON.
 34. THE ENGINEER'S SEAL AND SIGNATURE SHALL BE PLACED IN THE SPACE PROVIDED HEREON.
 35. THE ENGINEER'S SEAL AND SIGNATURE SHALL BE PLACED IN THE SPACE PROVIDED HEREON.
 36. THE ENGINEER'S SEAL AND SIGNATURE SHALL BE PLACED IN THE SPACE PROVIDED HEREON.
 37. THE ENGINEER'S SEAL AND SIGNATURE SHALL BE PLACED IN THE SPACE PROVIDED HEREON.
 38. THE ENGINEER'S SEAL AND SIGNATURE SHALL BE PLACED IN THE SPACE PROVIDED HEREON.
 39. THE ENGINEER'S SEAL AND SIGNATURE SHALL BE PLACED IN THE SPACE PROVIDED HEREON.
 40. THE ENGINEER'S SEAL AND SIGNATURE SHALL BE PLACED IN THE SPACE PROVIDED HEREON.
 41. THE ENGINEER'S SEAL AND SIGNATURE SHALL BE PLACED IN THE SPACE PROVIDED HEREON.
 42. THE ENGINEER'S SEAL AND SIGNATURE SHALL BE PLACED IN THE SPACE PROVIDED HEREON.
 43. THE ENGINEER'S SEAL AND SIGNATURE SHALL BE PLACED IN THE SPACE PROVIDED HEREON.
 44. THE ENGINEER'S SEAL AND SIGNATURE SHALL BE PLACED IN THE SPACE PROVIDED HEREON.
 45. THE ENGINEER'S SEAL AND SIGNATURE SHALL BE PLACED IN THE SPACE PROVIDED HEREON.
 46. THE ENGINEER'S SEAL AND SIGNATURE SHALL BE PLACED IN THE SPACE PROVIDED HEREON.
 47. THE ENGINEER'S SEAL AND SIGNATURE SHALL BE PLACED IN THE SPACE PROVIDED HEREON.
 48. THE ENGINEER'S SEAL AND SIGNATURE SHALL BE PLACED IN THE SPACE PROVIDED HEREON.
 49. THE ENGINEER'S SEAL AND SIGNATURE SHALL BE PLACED IN THE SPACE PROVIDED HEREON.
 50. THE ENGINEER'S SEAL AND SIGNATURE SHALL BE PLACED IN THE SPACE PROVIDED HEREON.
 51. THE ENGINEER'S SEAL AND SIGNATURE SHALL BE PLACED IN THE SPACE PROVIDED HEREON.
 52. THE ENGINEER'S SEAL AND SIGNATURE SHALL BE PLACED IN THE SPACE PROVIDED HEREON.
 53. THE ENGINEER'S SEAL AND SIGNATURE SHALL BE PLACED IN THE SPACE PROVIDED HEREON.
 54. THE ENGINEER'S SEAL AND SIGNATURE SHALL BE PLACED IN THE SPACE PROVIDED HEREON.
 55. THE ENGINEER'S SEAL AND SIGNATURE SHALL BE PLACED IN THE SPACE PROVIDED HEREON.
 56. THE ENGINEER'S SEAL AND SIGNATURE SHALL BE PLACED IN THE SPACE PROVIDED HEREON.
 57. THE ENGINEER'S SEAL AND SIGNATURE SHALL BE PLACED IN THE SPACE PROVIDED HEREON.
 58. THE ENGINEER'S SEAL AND SIGNATURE SHALL BE PLACED IN THE SPACE PROVIDED HEREON.
 59. THE ENGINEER'S SEAL AND SIGNATURE SHALL BE PLACED IN THE SPACE PROVIDED HEREON.
 60. THE ENGINEER'S SEAL AND SIGNATURE SHALL BE PLACED IN THE SPACE PROVIDED HEREON.
 61. THE ENGINEER'S SEAL AND SIGNATURE SHALL BE PLACED IN THE SPACE PROVIDED HEREON.
 62. THE ENGINEER'S SEAL AND SIGNATURE SHALL BE PLACED IN THE SPACE PROVIDED HEREON.
 63. THE ENGINEER'S SEAL AND SIGNATURE SHALL BE PLACED IN THE SPACE PROVIDED HEREON.
 64. THE ENGINEER'S SEAL AND SIGNATURE SHALL BE PLACED IN THE SPACE PROVIDED HEREON.
 65. THE ENGINEER'S SEAL AND SIGNATURE SHALL BE PLACED IN THE SPACE PROVIDED HEREON.
 66. THE ENGINEER'S SEAL AND SIGNATURE SHALL BE PLACED IN THE SPACE PROVIDED HEREON.
 67. THE ENGINEER'S SEAL AND SIGNATURE SHALL BE PLACED IN THE SPACE PROVIDED HEREON.
 68. THE ENGINEER'S SEAL AND SIGNATURE SHALL BE PLACED IN THE SPACE PROVIDED HEREON.
 69. THE ENGINEER'S SEAL AND SIGNATURE SHALL BE PLACED IN THE SPACE PROVIDED HEREON.
 70. THE ENGINEER'S SEAL AND SIGNATURE SHALL BE PLACED IN THE SPACE PROVIDED HEREON.
 71. THE ENGINEER'S SEAL AND SIGNATURE SHALL BE PLACED IN THE SPACE PROVIDED HEREON.
 72. THE ENGINEER'S SEAL AND SIGNATURE SHALL BE PLACED IN THE SPACE PROVIDED HEREON.
 73. THE ENGINEER'S SEAL AND SIGNATURE SHALL BE PLACED IN THE SPACE PROVIDED HEREON.
 74. THE ENGINEER'S SEAL AND SIGNATURE SHALL BE PLACED IN THE SPACE PROVIDED HEREON.
 75. THE ENGINEER'S SEAL AND SIGNATURE SHALL BE PLACED IN THE SPACE PROVIDED HEREON.
 76. THE ENGINEER'S SEAL AND SIGNATURE SHALL BE PLACED IN THE SPACE PROVIDED HEREON.
 77. THE ENGINEER'S SEAL AND SIGNATURE SHALL BE PLACED IN THE SPACE PROVIDED HEREON.
 78. THE ENGINEER'S SEAL AND SIGNATURE SHALL BE PLACED IN THE SPACE PROVIDED HEREON.
 79. THE ENGINEER'S SEAL AND SIGNATURE SHALL BE PLACED IN THE SPACE PROVIDED HEREON.
 80. THE ENGINEER'S SEAL AND SIGNATURE SHALL BE PLACED IN THE SPACE PROVIDED HEREON.
 81. THE ENGINEER'S SEAL AND SIGNATURE SHALL BE PLACED IN THE SPACE PROVIDED HEREON.
 82. THE ENGINEER'S SEAL AND SIGNATURE SHALL BE PLACED IN THE SPACE PROVIDED HEREON.
 83. THE ENGINEER'S SEAL AND SIGNATURE SHALL BE PLACED IN THE SPACE PROVIDED HEREON.
 84. THE ENGINEER'S SEAL AND SIGNATURE SHALL BE PLACED IN THE SPACE PROVIDED HEREON.
 85. THE ENGINEER'S SEAL AND SIGNATURE SHALL BE PLACED IN THE SPACE PROVIDED HEREON.
 86. THE ENGINEER'S SEAL AND SIGNATURE SHALL BE PLACED IN THE SPACE PROVIDED HEREON.
 87. THE ENGINEER'S SEAL AND SIGNATURE SHALL BE PLACED IN THE SPACE PROVIDED HEREON.
 88. THE ENGINEER'S SEAL AND SIGNATURE SHALL BE PLACED IN THE SPACE PROVIDED HEREON.
 89. THE ENGINEER'S SEAL AND SIGNATURE SHALL BE PLACED IN THE SPACE PROVIDED HEREON.
 90. THE ENGINEER'S SEAL AND SIGNATURE SHALL BE PLACED IN THE SPACE PROVIDED HEREON.
 91. THE ENGINEER'S SEAL AND SIGNATURE SHALL BE PLACED IN THE SPACE PROVIDED HEREON.
 92. THE ENGINEER'S SEAL AND SIGNATURE SHALL BE PLACED IN THE SPACE PROVIDED HEREON.
 93. THE ENGINEER'S SEAL AND SIGNATURE SHALL BE PLACED IN THE SPACE PROVIDED HEREON.
 94. THE ENGINEER'S SEAL AND SIGNATURE SHALL BE PLACED IN THE SPACE PROVIDED HEREON.
 95. THE ENGINEER'S SEAL AND SIGNATURE SHALL BE PLACED IN THE SPACE PROVIDED HEREON.
 96. THE ENGINEER'S SEAL AND SIGNATURE SHALL BE PLACED IN THE SPACE PROVIDED HEREON.
 97. THE ENGINEER'S SEAL AND SIGNATURE SHALL BE PLACED IN THE SPACE PROVIDED HEREON.
 98. THE ENGINEER'S SEAL AND SIGNATURE SHALL BE PLACED IN THE SPACE PROVIDED HEREON.
 99. THE ENGINEER'S SEAL AND SIGNATURE SHALL BE PLACED IN THE SPACE PROVIDED HEREON.
 100. THE ENGINEER'S SEAL AND SIGNATURE SHALL BE PLACED IN THE SPACE PROVIDED HEREON.



NOTE:
CURB TO BE CONSTRUCTED MONOLITHIC WITH THE CONCRETE PAVEMENT AND PLACED ON THE SAME GRADE AND ELEVATION AS THE EXISTING CURB.

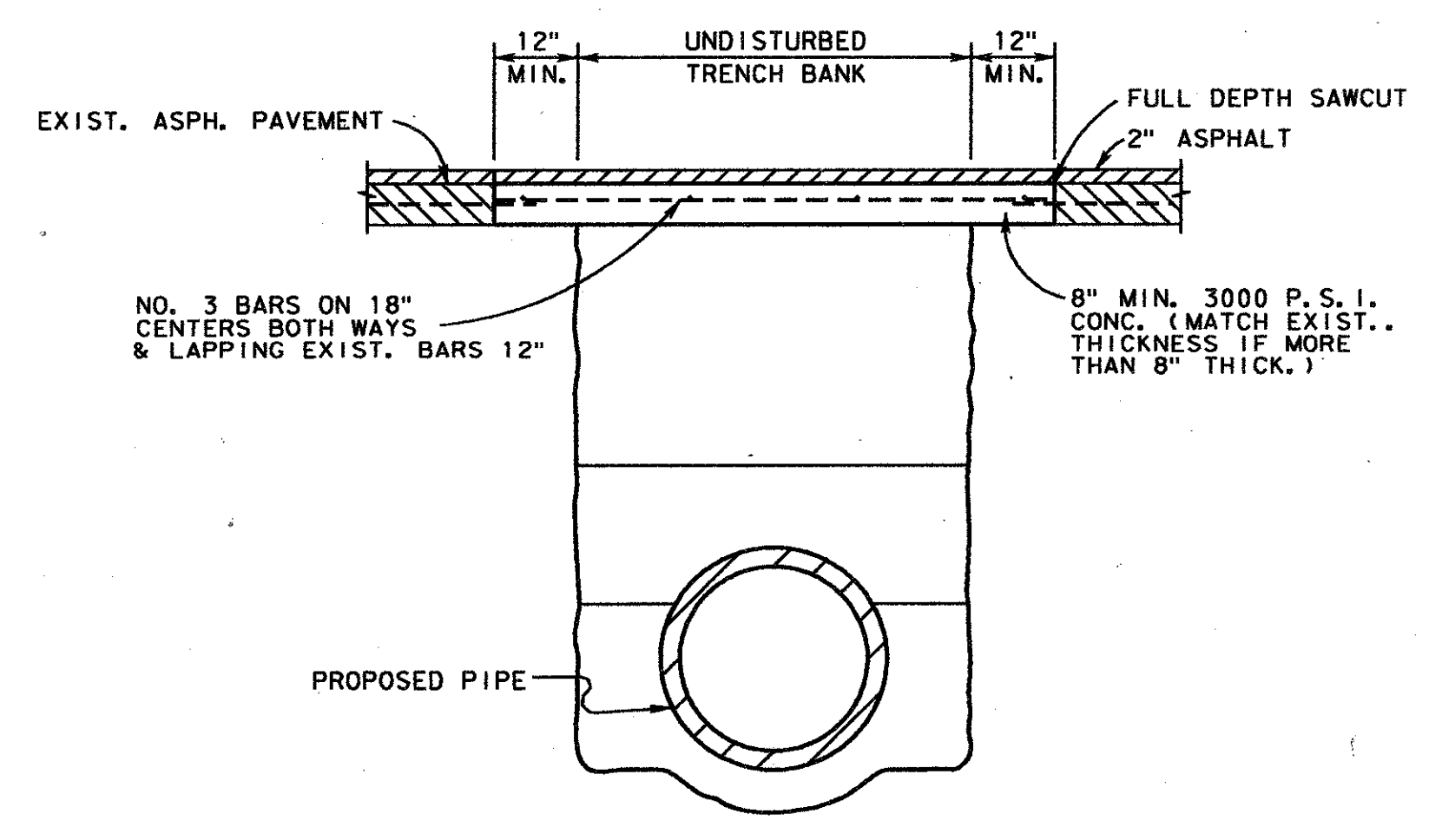
6" CONCRETE CURB

MATCH EXISTING PAVEMENT THICKNESS IF MORE THAN 7" THICK.

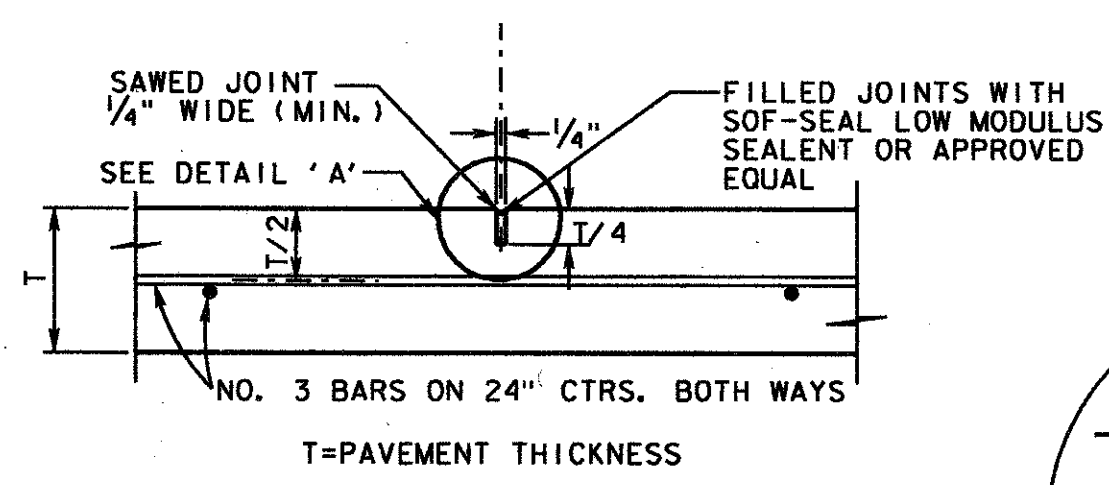


NOTE:
SAWCUT SHALL BE SUBSIDIARY TO THE BID ITEM CONCRETE PAVEMENT. NO SEPERATE PAY ITEM.

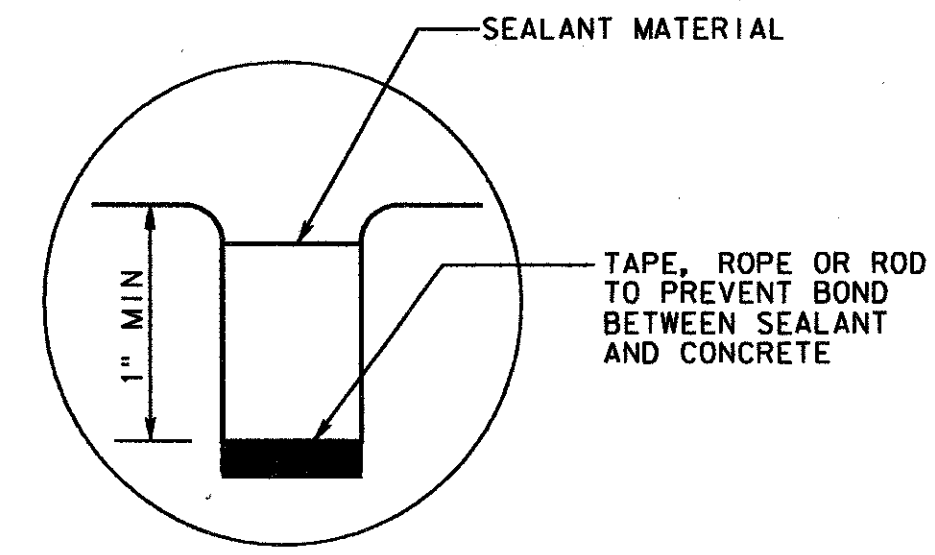
CONCRETE STREET OR DRIVEWAY REPAIR



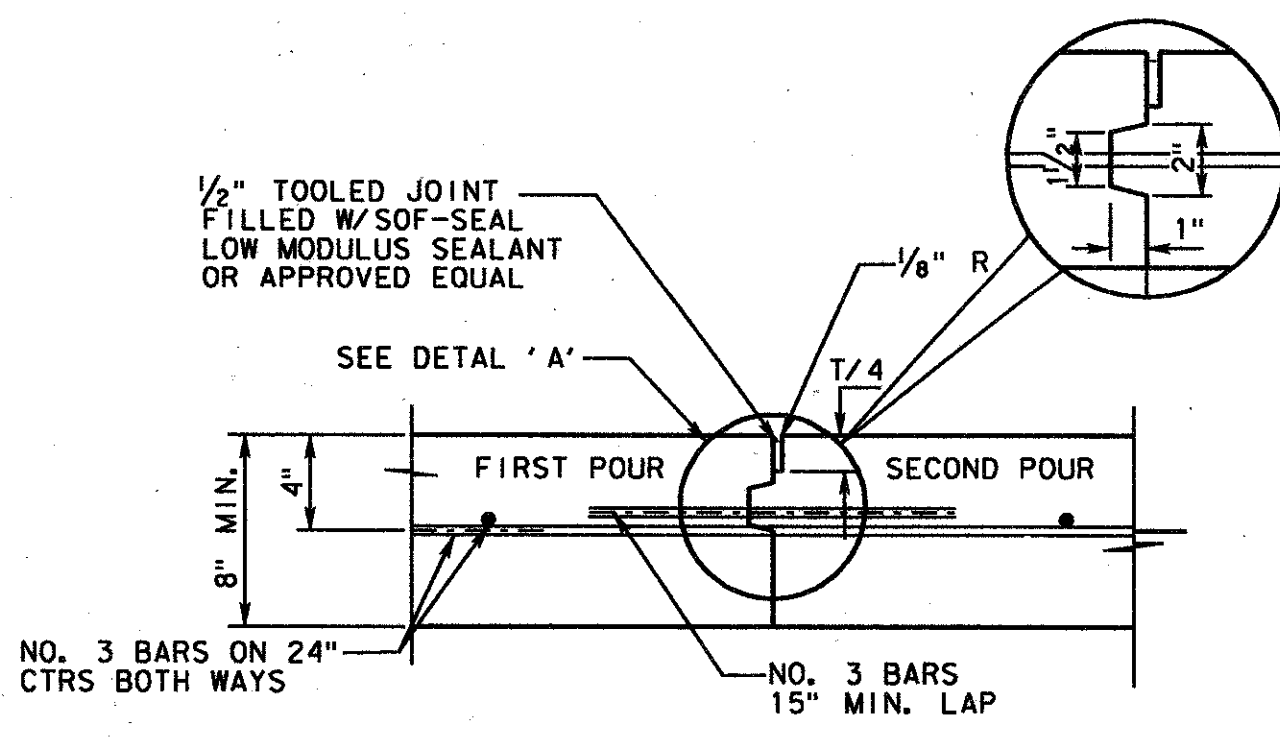
ASPHALT STREET OR DRIVEWAY REPAIR



SAWED DUMMY JOINT
(TRANSVERSE DUMMY JOINT TO BE SPACED 16' MIN. & 22' MAX.)

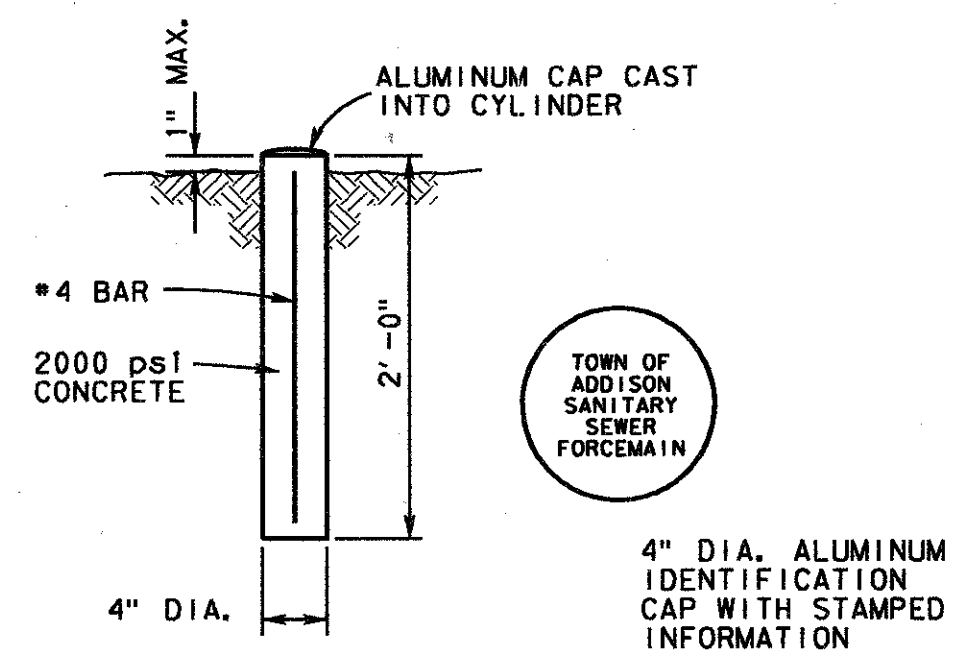


DETAIL 'A'



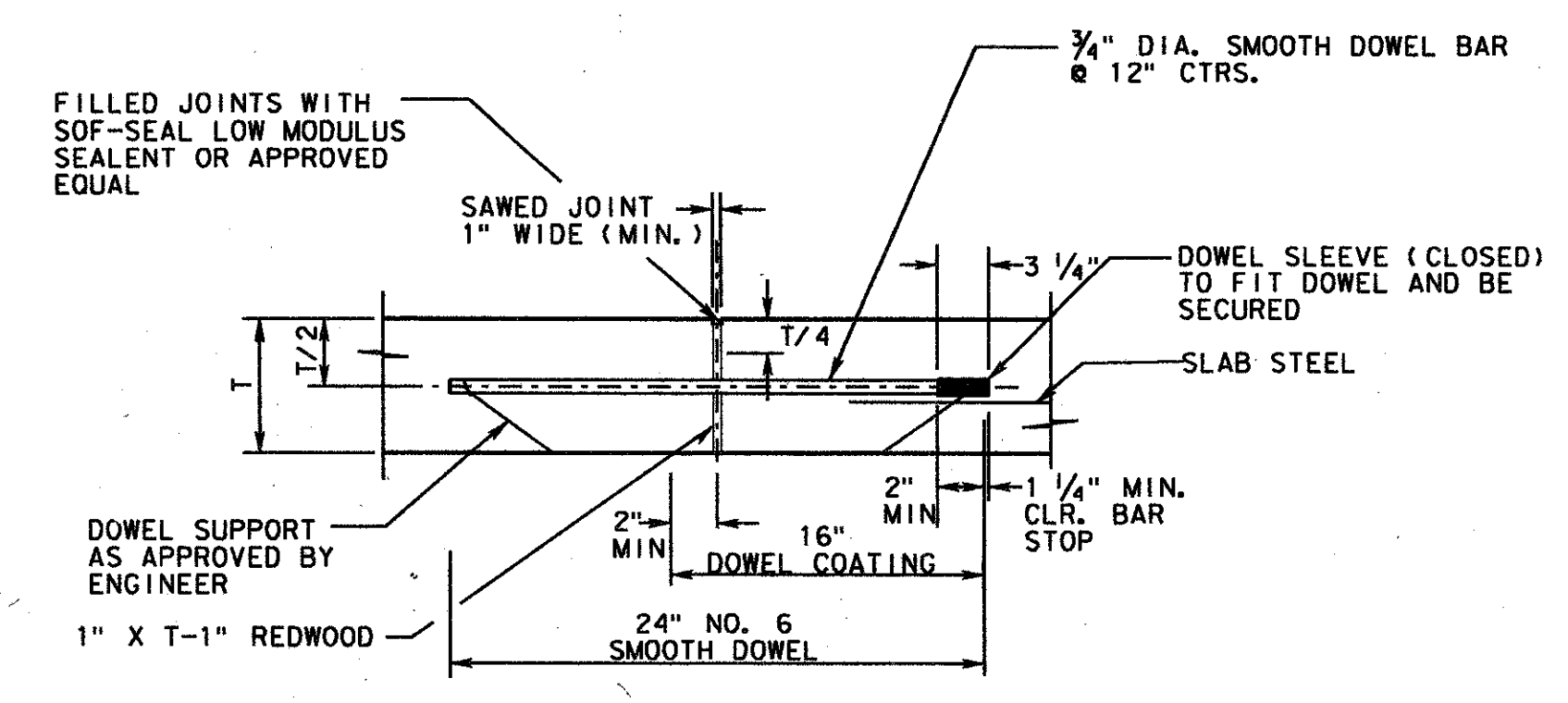
CONSTRUCTION JOINT FOR PAVEMENTS
FOR 8" THICKNESS PAVEMENT AND LONGITUDINAL JOINTS

NOTE:
CONTRACTOR SHALL PROTECT KEYWAY PRIOR TO SECOND POUR. IF LONGITUDINAL KEYWAY IS DAMAGED, CONTRACTOR SHALL REPAIR WITH THE USE OF LONGITUDINAL BUTT JOINT. DRILL DOWELS INTO FIRST POUR.
T=PAVEMENT THICKNESS
THICKENED EDGES ARE REQUIRED FOR FUTURE WIDENING ONLY.



LOCATE FORCE MAIN MARKERS ON CENTERLINE AT 300 FEET MAXIMUM SPACING AND AS SHOWN ON PLANS. NOT A SEPERATE PAY ITEM.

FORCE MAIN MARKER DETAIL



TRANSVERSE EXPANSION JOINT

NOTES:
1. DOWEL SPACER TO BE PLACED ON FIRST Poured SIDE OF DOWELS.
2. SPACER SHALL BE ALIGNED SUCH THAT DOWELS ARE PARALLEL TO EACH OTHER, AND PERPENDICULAR TO REDWOOD.

STATE OF TEXAS
JOHN H. LINDNER
64694
REGISTERED PROFESSIONAL ENGINEER
John H. Lindner
3/24/95

4			
3			
2			
1			
NO.	DATE	REVISION	APPROV.
TOWN OF ADDISON, TEXAS			
MIDWAY/BELTLINE SANITARY SEWER			
PAVING DETAILS ()			
Carter Burgess Consultants in Engineering, Architecture, Planning and the Environment. CARTER & BURGESS, INC. 7950 ELMBROOK DRIVE, SUITE 250 DALLAS, TX 75247-4061			
Unit	D. Moore	Scale 1" = 2"	Date 03-23-95
Designed	J. Lindner	Checked	Job No. 93327601D
Drawn	B. Sowels	Approved	Sheet 11 of 11

AI-10

Midway/Beltline Sanitary Sewer
8" & 12" Force Mains

111000
 111001
 111002
 111003
 111004
 111005
 111006
 111007
 111008
 111009
 111010
 111011
 111012
 111013
 111014
 111015
 111016
 111017
 111018
 111019
 111020
 111021
 111022
 111023
 111024
 111025
 111026
 111027
 111028
 111029
 111030
 111031
 111032
 111033
 111034
 111035
 111036
 111037
 111038
 111039
 111040
 111041
 111042
 111043
 111044
 111045
 111046
 111047
 111048
 111049
 111050
 111051
 111052
 111053
 111054
 111055
 111056
 111057
 111058
 111059
 111060
 111061
 111062
 111063
 111064
 111065
 111066
 111067
 111068
 111069
 111070
 111071
 111072
 111073
 111074
 111075
 111076
 111077
 111078
 111079
 111080
 111081
 111082
 111083
 111084
 111085
 111086
 111087
 111088
 111089
 111090
 111091
 111092
 111093
 111094
 111095
 111096
 111097
 111098
 111099
 111100
 111101
 111102
 111103
 111104
 111105
 111106
 111107
 111108
 111109
 111110
 111111
 111112
 111113
 111114
 111115
 111116
 111117
 111118
 111119
 111120
 111121
 111122
 111123
 111124
 111125
 111126
 111127
 111128
 111129
 111130
 111131
 111132
 111133
 111134
 111135
 111136
 111137
 111138
 111139
 111140
 111141
 111142
 111143
 111144
 111145
 111146
 111147
 111148
 111149
 111150
 111151
 111152
 111153
 111154
 111155
 111156
 111157
 111158
 111159
 111160
 111161
 111162
 111163
 111164
 111165
 111166
 111167
 111168
 111169
 111170
 111171
 111172
 111173
 111174
 111175
 111176
 111177
 111178
 111179
 111180
 111181
 111182
 111183
 111184
 111185
 111186
 111187
 111188
 111189
 111190
 111191
 111192
 111193
 111194
 111195
 111196
 111197
 111198
 111199
 111200
 111201
 111202
 111203
 111204
 111205
 111206
 111207
 111208
 111209
 111210
 111211
 111212
 111213
 111214
 111215
 111216
 111217
 111218
 111219
 111220
 111221
 111222
 111223
 111224
 111225
 111226
 111227
 111228
 111229
 111230
 111231
 111232
 111233
 111234
 111235
 111236
 111237
 111238
 111239
 111240
 111241
 111242
 111243
 111244
 111245
 111246
 111247
 111248
 111249
 111250
 111251
 111252
 111253
 111254
 111255
 111256
 111257
 111258
 111259
 111260
 111261
 111262
 111263
 111264
 111265
 111266
 111267
 111268
 111269
 111270
 111271
 111272
 111273
 111274
 111275
 111276
 111277
 111278
 111279
 111280
 111281
 111282
 111283
 111284
 111285
 111286
 111287
 111288
 111289
 111290
 111291
 111292
 111293
 111294
 111295
 111296
 111297
 111298
 111299
 111300
 111301
 111302
 111303
 111304
 111305
 111306
 111307
 111308
 111309
 111310
 111311
 111312
 111313
 111314
 111315
 111316
 111317
 111318
 111319
 111320
 111321
 111322
 111323
 111324
 111325
 111326
 111327
 111328
 111329
 111330
 111331
 111332
 111333
 111334
 111335
 111336
 111337
 111338
 111339
 111340
 111341
 111342
 111343
 111344
 111345
 111346
 111347
 111348
 111349
 111350
 111351
 111352
 111353
 111354
 111355
 111356
 111357
 111358
 111359
 111360
 111361
 111362
 111363
 111364
 111365
 111366
 111367
 111368
 111369
 111370
 111371
 111372
 111373
 111374
 111375
 111376
 111377
 111378
 111379
 111380
 111381
 111382
 111383
 111384
 111385
 111386
 111387
 111388
 111389
 111390
 111391
 111392
 111393
 111394
 111395
 111396
 111397
 111398
 111399
 111400
 111401
 111402
 111403
 111404
 111405
 111406
 111407
 111408
 111409
 111410
 111411
 111412
 111413
 111414
 111415
 111416
 111417
 111418
 111419
 111420
 111421
 111422
 111423
 111424
 111425
 111426
 111427
 111428
 111429
 111430
 111431
 111432
 111433
 111434
 111435
 111436
 111437
 111438
 111439
 111440
 111441
 111442
 111443
 111444
 111445
 111446
 111447
 111448
 111449
 111450
 111451
 111452
 111453
 111454
 111455
 111456
 111457
 111458
 111459
 111460
 111461
 111462
 111463
 111464
 111465
 111466
 111467
 111468
 111469
 111470
 111471
 111472
 111473
 111474
 111475
 111476
 111477
 111478
 111479
 111480
 111481
 111482
 111483
 111484
 111485
 111486
 111487
 111488
 111489
 111490
 111491
 111492
 111493
 111494
 111495
 111496
 111497
 111498
 111499
 111500
 111501
 111502
 111503
 111504
 111505
 111506
 111507
 111508
 111509
 111510
 111511
 111512
 111513
 111514
 111515
 111516
 111517
 111518
 111519
 111520
 111521
 111522
 111523
 111524
 111525
 111526
 111527
 111528
 111529
 111530
 111531
 111532
 111533
 111534
 111535
 111536
 111537
 111538
 111539
 111540
 111541
 111542
 111543
 111544
 111545
 111546
 111547
 111548
 111549
 111550
 111551
 111552
 111553
 111554
 111555
 111556
 111557
 111558
 111559
 111560
 111561
 111562
 111563
 111564
 111565
 111566
 111567
 111568
 111569
 111570
 111571
 111572
 111573
 111574
 111575
 111576
 111577
 111578
 111579
 111580
 111581
 111582
 111583
 111584
 111585
 111586
 111587
 111588
 111589
 111590
 111591
 111592
 111593
 111594
 111595
 111596
 111597
 111598
 111599
 111600
 111601
 111602
 111603
 111604
 111605
 111606
 111607
 111608
 111609
 111610
 111611
 111612
 111613
 111614
 111615
 111616
 111617
 111618
 111619
 111620
 111621
 111622
 111623
 111624
 111625
 111626
 111627
 111628
 111629
 111630
 111631
 111632
 111633
 111634
 111635
 111636
 111637
 111638
 111639
 111640
 111641
 111642
 111643
 111644
 111645
 111646
 111647
 111648
 111649
 111650
 111651
 111652
 111653
 111654
 111655
 111656
 111657
 111658
 111659
 111660
 111661
 111662
 111663
 111664
 111665
 111666
 111667
 111668
 111669
 111670
 111671
 111672
 111673
 111674
 111675
 111676
 111677
 111678
 111679
 111680
 111681
 111682
 111683
 111684
 111685
 111686
 111687
 111688
 111689
 111690
 111691
 111692
 111693
 111694
 111695
 111696
 111697
 111698
 111699
 111700
 111701
 111702
 111703
 111704
 111705
 111706
 111707
 111708
 111709
 111710
 111711
 111712
 111713
 111714
 111715
 111716
 111717
 111718
 111719
 111720
 111721
 111722
 111723
 111724
 111725
 111726
 111727
 111728
 111729
 111730
 111731
 111732
 111733
 111734
 111735
 111736
 111737
 111738
 111739
 111740
 111741
 111742
 111743
 111744
 111745
 111746
 111747
 111748
 111749
 111750
 111751
 111752
 111753
 111754
 111755
 111756
 111757
 111758
 111759
 111760
 111761
 111762
 111763
 111764
 111765
 111766
 111767
 111768
 111769
 111770
 111771
 111772
 111773
 111774
 111775
 111776
 111777
 111778
 111779
 111780
 111781
 111782
 111783
 111784
 111785
 111786
 111787
 111788
 111789
 111790
 111791
 111792
 111793
 111794
 111795
 111796
 111797
 111798
 111799
 111800
 111801
 111802
 111803
 111804
 111805
 111806
 111807
 111808
 111809
 111810
 111811
 111812
 111813
 111814
 111815
 111816
 111817
 111818
 111819
 111820
 111821
 111822
 111823
 111824
 111825
 111826
 111827
 111828
 111829
 111830
 111831
 111832
 111833
 111834
 111835
 111836
 111837
 111838
 111839
 111840
 111841
 111842
 111843
 111844
 111845
 111846
 111847
 111848
 111849
 111850
 111851
 111852
 111853
 111854
 111855
 111856
 111857
 111858
 111859
 111860
 111861
 111862
 111863
 111864
 111865
 111866
 111867
 111868
 111869
 111870
 111871
 111872
 111873
 111874
 111875
 111876
 111877
 111878
 111879
 111880
 111881
 111882
 111883
 111884
 111885
 111886
 111887
 111888
 111889
 111890
 111891
 111892
 111893
 111894
 111895
 111896
 111897
 111898
 111899
 111900
 111901
 111902
 111903
 111904
 111905
 111906
 111907
 111908
 111909
 111910
 111911
 111912
 111913
 111914
 111915
 111916
 111917
 111918
 111919
 111920
 111921
 111922
 111923
 111924
 111925
 111926
 111927
 111928
 111929
 111930
 111931
 111932
 111933
 111934
 111935
 111936
 111937
 111938
 111939
 111940
 111941
 111942
 111943
 111944
 111945
 111946
 111947
 111948
 111949
 111950
 111951
 111952
 111953
 111954
 111955
 111956
 111957
 111958
 111959
 111960
 111961
 111962
 111963
 111964
 111965
 111966
 111967
 111968
 111969
 111970
 111971
 111972
 111973
 111974
 111975
 111976
 111977
 111978
 111979
 111980
 111981
 111982
 111983
 111984
 111985
 111986
 111987
 111988
 111989
 111990
 111991
 111992
 111993
 111994
 111995
 111996
 111997
 111998
 111999
 112000
 112001
 112002
 112003
 112004
 112005
 112006
 112007
 112008
 112009
 112010
 112011
 112012
 112013
 112014
 112015
 112016
 112017
 112018
 112019
 112020
 112021
 112022
 112023
 112024
 112025
 112026
 112027
 112028
 112029
 112030
 112031
 112032
 112033
 112034
 112035
 112036
 112037
 112038
 112039
 112040
 112041
 112042
 112043
 112044
 112045
 112046
 112047
 112048
 112049
 112050
 112051
 112052
 112053
 112054
 112055
 112056
 112057
 112058
 112059
 112060
 112061
 112062
 112063
 112064
 112065
 112066
 112067
 112068
 112069
 112070
 112071
 112072
 112073
 112074
 112075
 112076
 112077
 112078
 112079
 112080
 112081
 112082
 112083
 112084
 112085
 112086
 112087
 112088
 112089
 112090
 112091
 112092
 112093
 112094
 112095
 112096
 112097
 112098
 112099
 112100
 112101
 112102
 112103
 112104
 112105
 112106
 112107
 112108
 112109
 112110
 112111
 112112
 112113