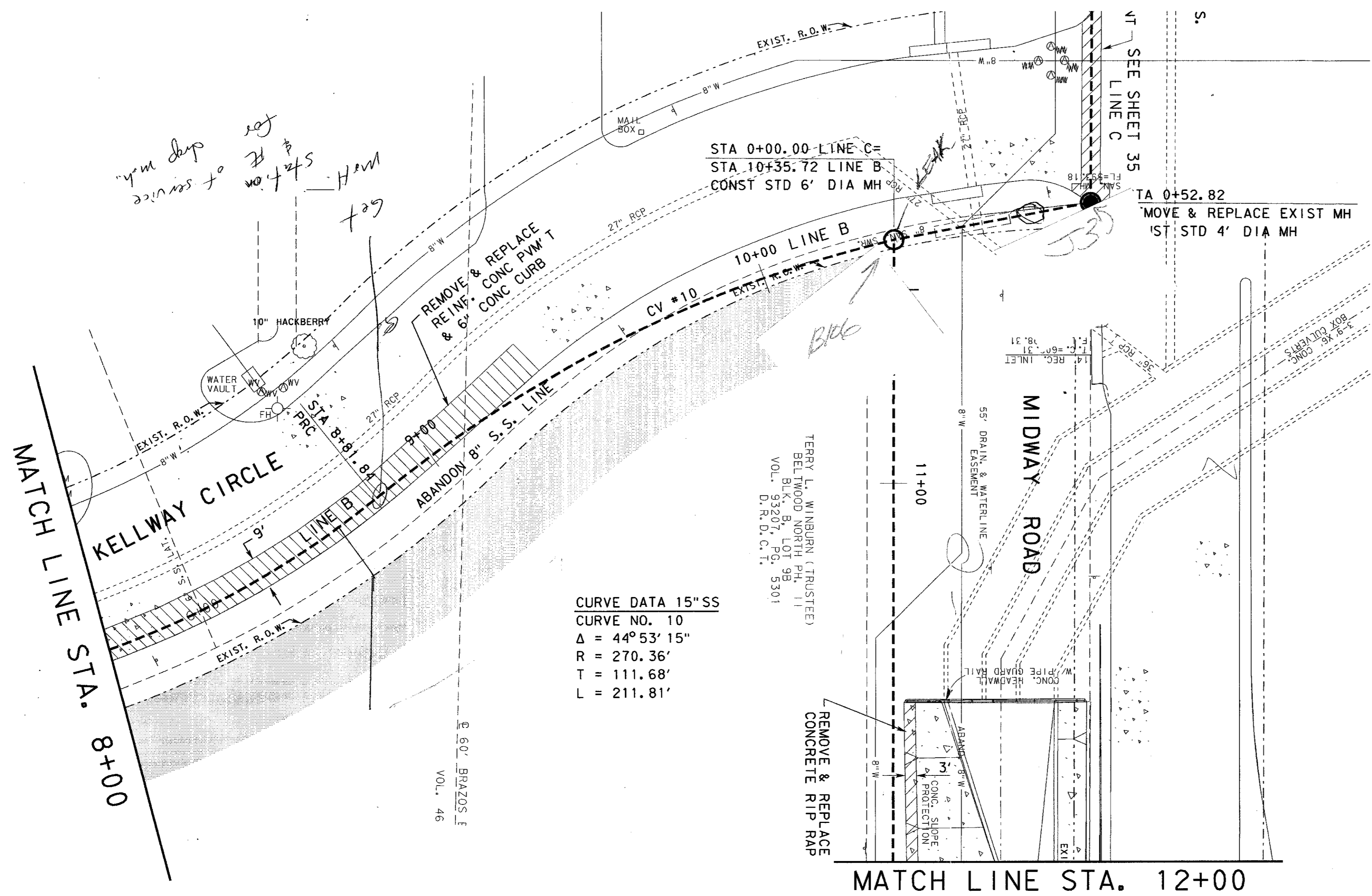


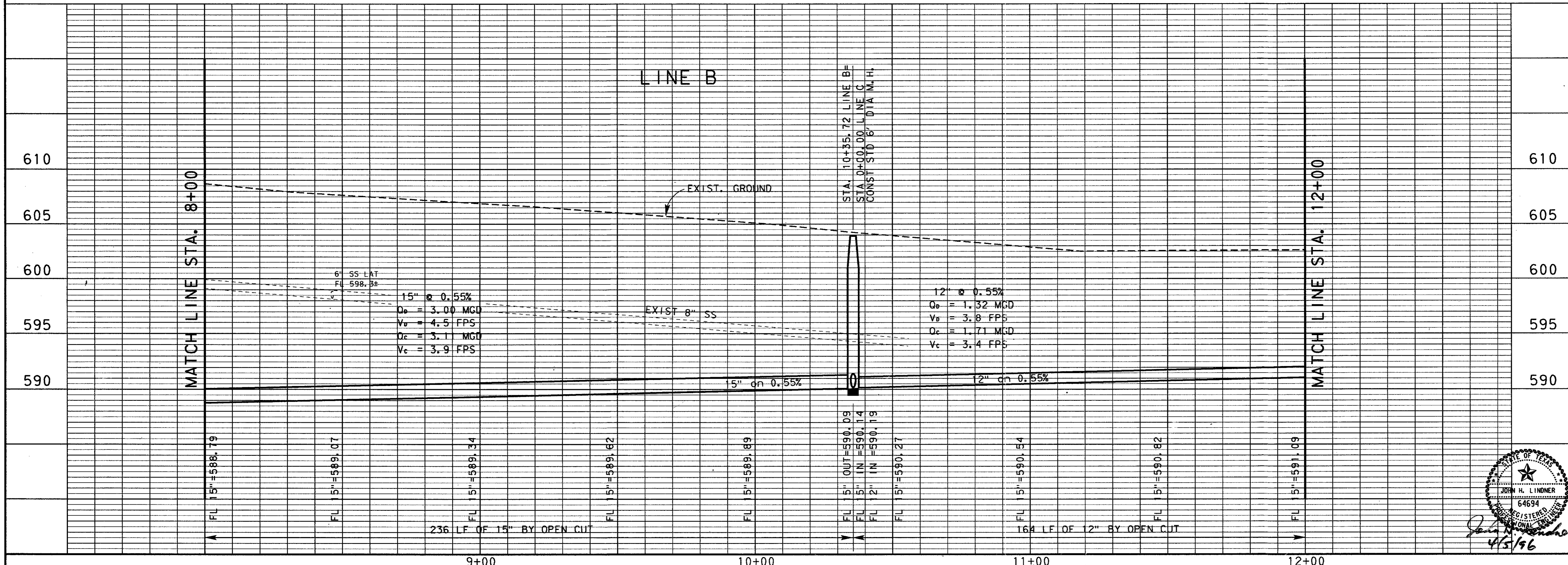
SHEET NO. 33 OF 63  
 DATE: 04-05-96  
 PROJECT: MIDWAY/BELTLINE SANITARY SEWER PHASE II  
 DRAWN BY: R. HOWMAN  
 CHECKED BY: J. LINDNER  
 APPROVED BY: J. LINDNER  
 SCALE: 1" = 20' HORIZ. 1" = 5' VERT.  
 SHEET NO. 33 OF 63



CURVE DATA 15" S.S.  
 CURVE NO. 10  
 $\Delta = 44^\circ 53' 15''$   
 $R = 270.36'$   
 $T = 111.68'$   
 $L = 211.81'$

TERRY L. WINBURN (TRUSTEE)  
 BELWOOD NORTH  
 VOL. 93207, PG. 3301  
 D.R.D.C.T.

NOTE:  
 CONTRACTOR SHALL REMOVE & DISPOSE OF TREES  
 AND DEBRIS LOCATED IN CREEK FROM STATION  
 9+40 TO STATION 12+60 AND GRADE.



NO.	DATE	REVISION	APPROV.
4			
3			
2			
1			

TOWN OF ADDISON, TEXAS  
 MIDWAY/BELTLINE SANITARY SEWER  
 PHASE II  
 LINE B  
 FROM STATION 8+00 TO STATION 12+00

**Carter & Burgess**  
 Consultants in Engineering, Architecture,  
 Planning and the Environment  
 CARTER & BURGESS, INC.  
 7550 EMBROOK DRIVE, SUITE 250  
 DALLAS, TX 75247-4961

Unit	Scale	Horiz. 1"=20' Vert. 1"=5'	Date	04-05-96	
Designed	J. Lindner	Checked	J. Lindner	Job No.	93327601D
Drawn	R. Howman	Approved	J. Lindner	Sheet	33 of 63

32765536.DGN  
 95/96