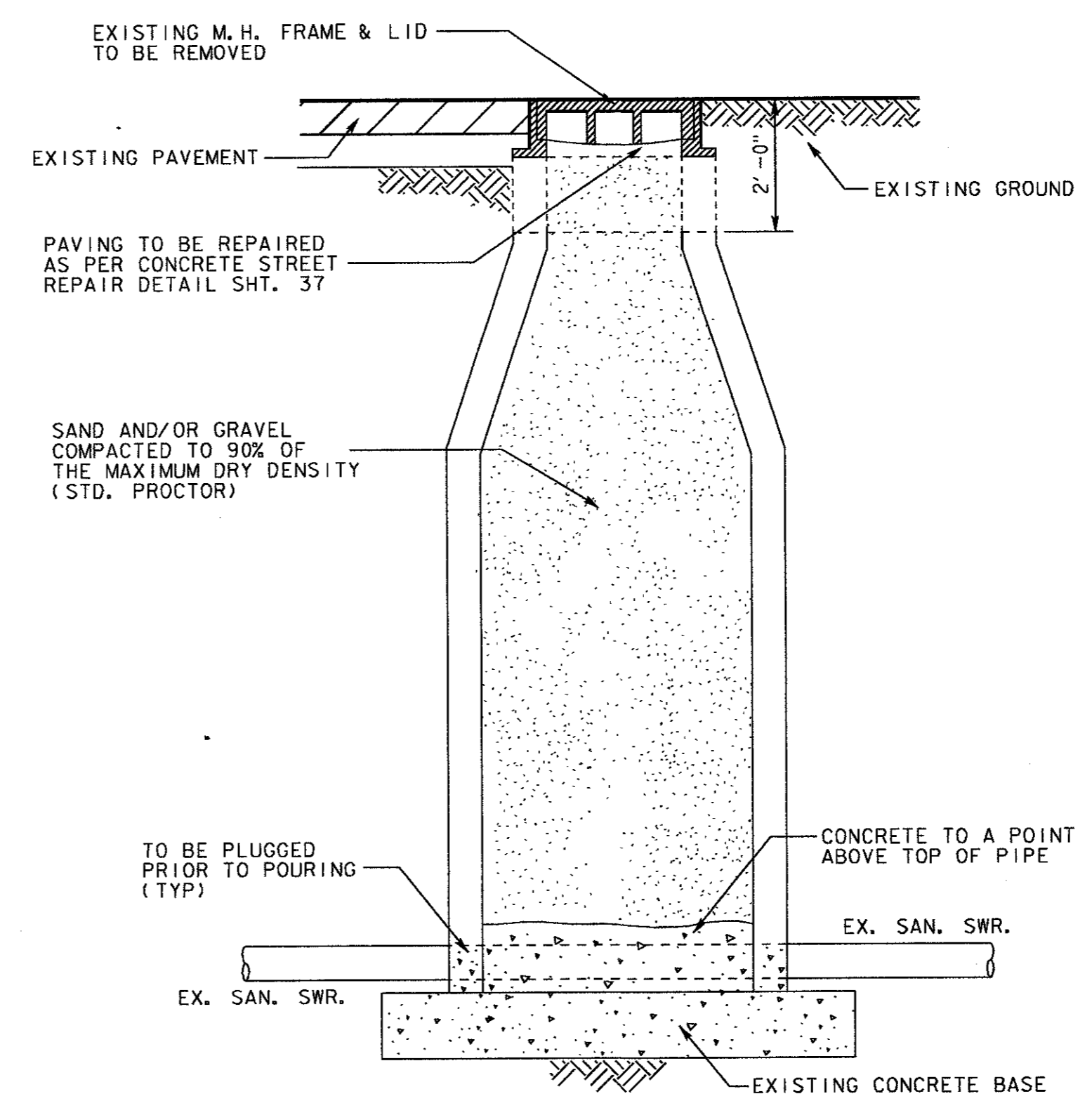


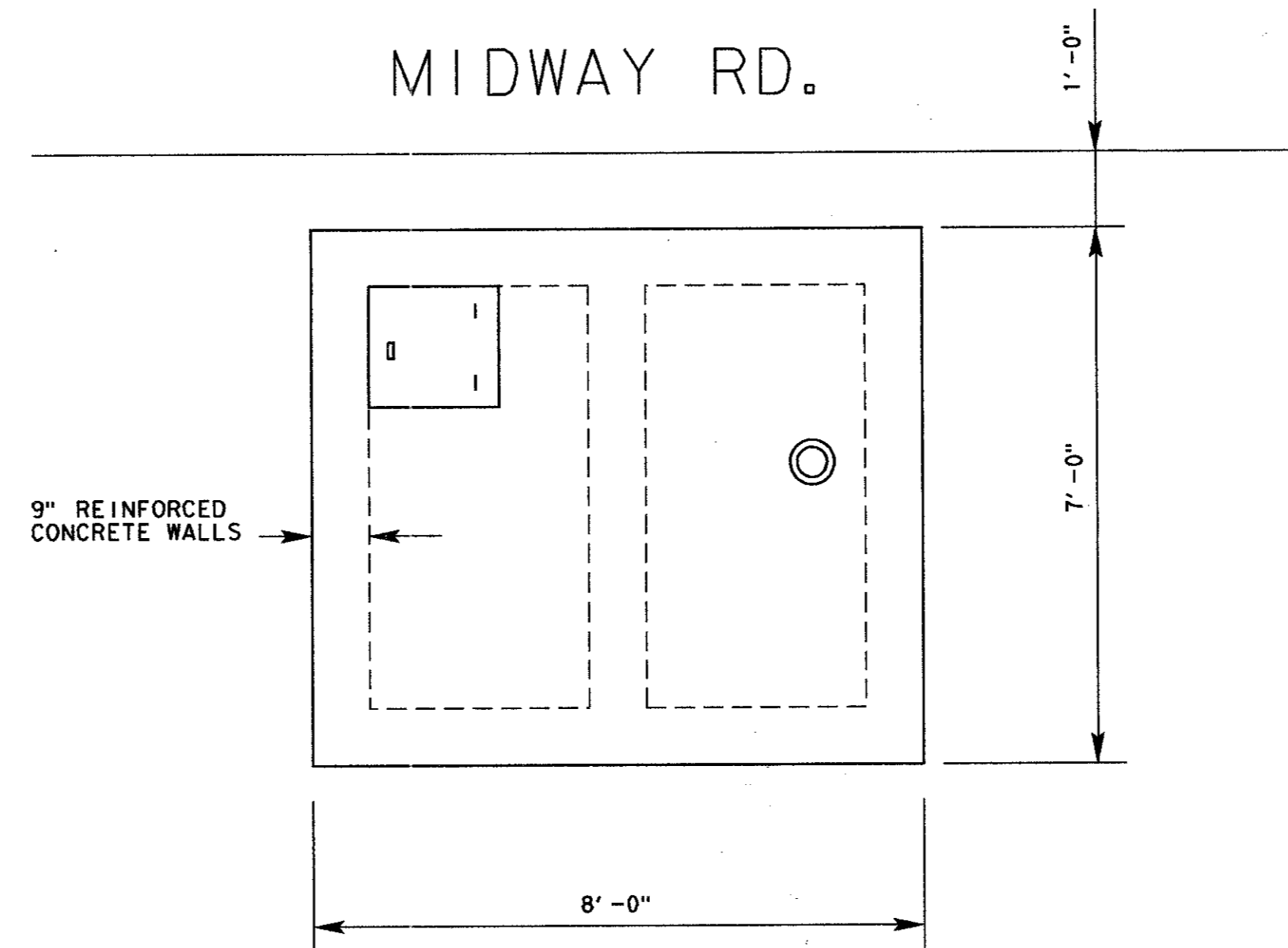
**RAWHIDE CREEK LIFT STATION
ABANDONMENT DETAIL**

☁ - INDICATES WORK TO BE DONE AS PART OF THIS CONTRACT.



**ABANDONMENT OF
EXISTING MANHOLE**

NOTE: ABANDONMENT OF MANHOLE UNIT PRICE SHALL INCLUDE PAVEMENT, SOD AND LANDSCAPE REMOVAL AND REPLACEMENT.



**MIDWAY METER STATION
ABANDONMENT DETAIL**

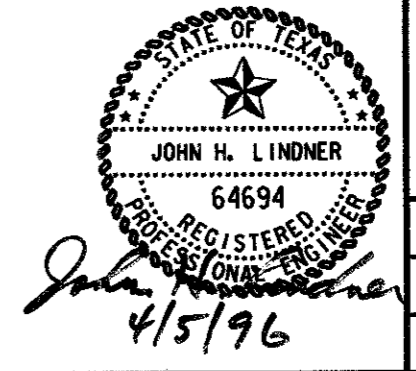
- NOTES:
1. REMOVE TOP AND WALLS OF METER STATION TO 2'-0" FT BELOW EXISTING GRADE AND DISPOSE.
 2. CUT AND PLUG EXISTING S.S. LINES.
 3. FILL LIFT STATION WITH BACKFILL MATERIAL AND COMPACT TO 90% STANDARD PROCTOR. USE TOPSOIL FOR TOP 1'-0" AND SOD.

- NOTES:
1. REMOVE AND DELIVER TO THE TOWN OF ADDISON 2 PUMPS, ELECTRICAL CONTROLS, CONTROL PANELS AND FLOATS.
 2. REMOVE TOP 2'-0" OF LIFT STATION INCLUDING HATCH, VENT AND DISPOSE.
 3. REMOVE AND DISPOSE OF ALL PIPING.
 4. FILL LIFT STATION WITH BACKFILL MATERIAL AND COMPACT TO 90% STANDARD PROCTOR. USE TOPSOIL FOR TOP 1'-0" AND SOD.
 5. PUMP OUT EXISTING LIFT STATION & EMPTY 8" FORCEMAIN PRIOR TO ABANDONMENT OF LIFT STATION.

| 4 | | | |
|-----|------|----------|---------|
| 3 | | | |
| 2 | | | |
| 1 | | | |
| NO. | DATE | REVISION | APPROV. |

TOWN OF ADDISON, TEXAS
MIDWAY/BELTLINE SANITARY SEWER
PHASE II
ABANDONMENT DETAIL SHEET

Carter-Burgess
Consultants in Engineering, Architecture,
Planning and the Environment
CARTER & BURGESS, INC.
7950 EMBROOK DRIVE, SUITE 250
DALLAS, TX 75247-4960



| | | | |
|----------|------------|----------|------------|
| Unit | Scale | Date | 04-05-96 |
| Designed | J. Lindner | Checked | J. Lindner |
| Drawn | R. Howman | Approved | J. Lindner |
| Job No. | 933216010 | Sheet | 38 of 63 |