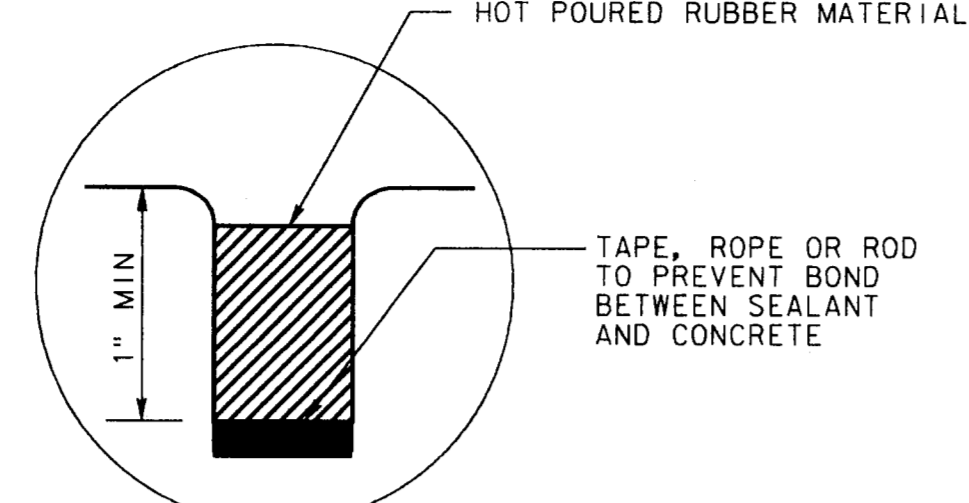
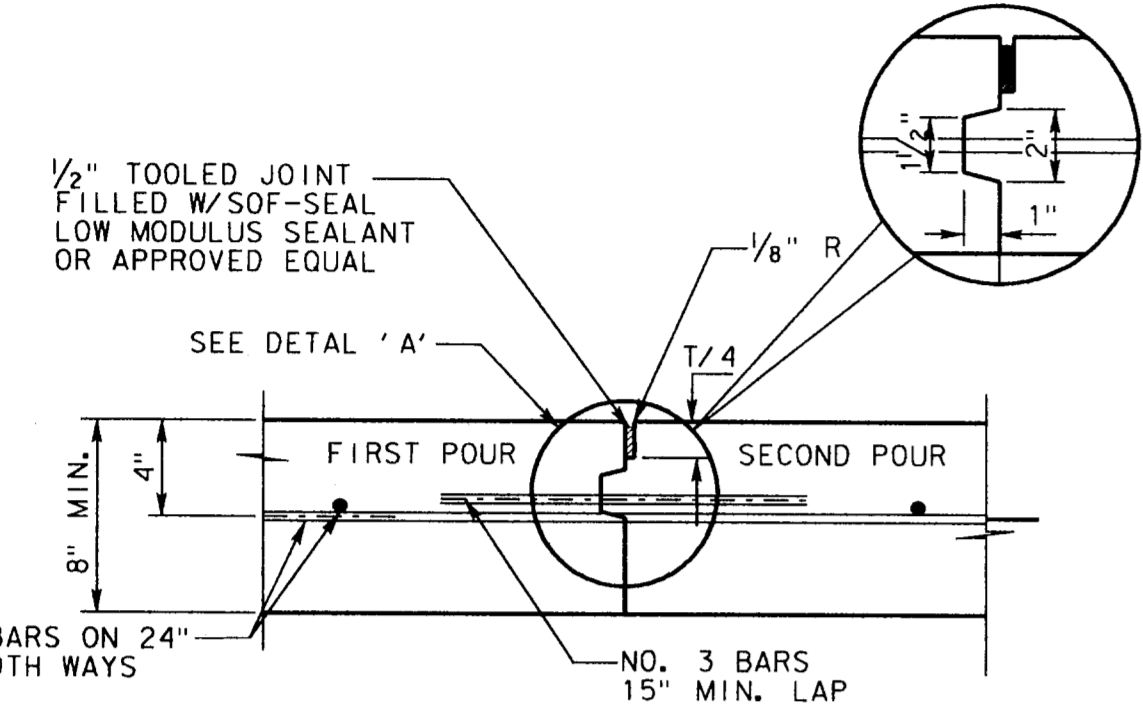


SAWED DUMMY JOINT
 (TRANSVERSE DUMMY JOINT TO BE SPACED 16\"/>

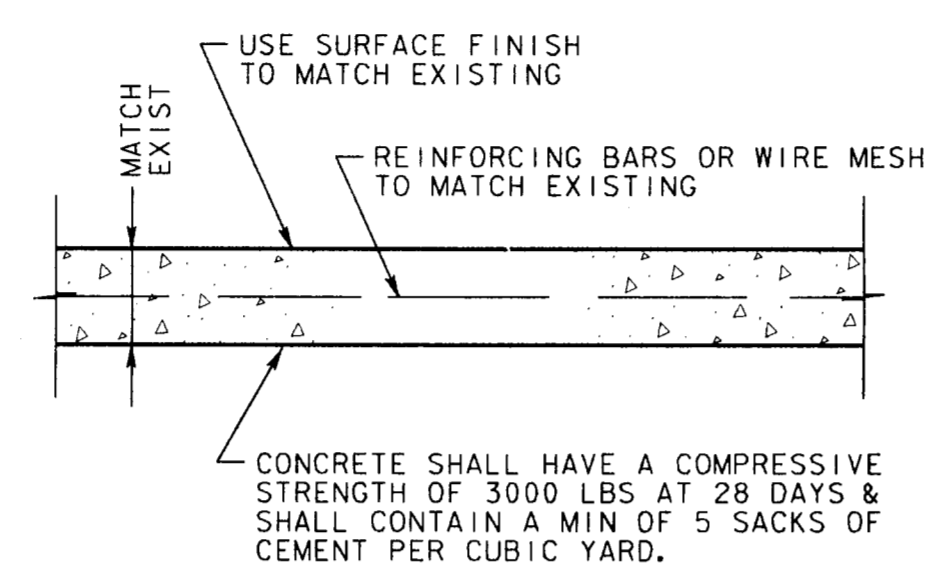


DETAIL 'A'

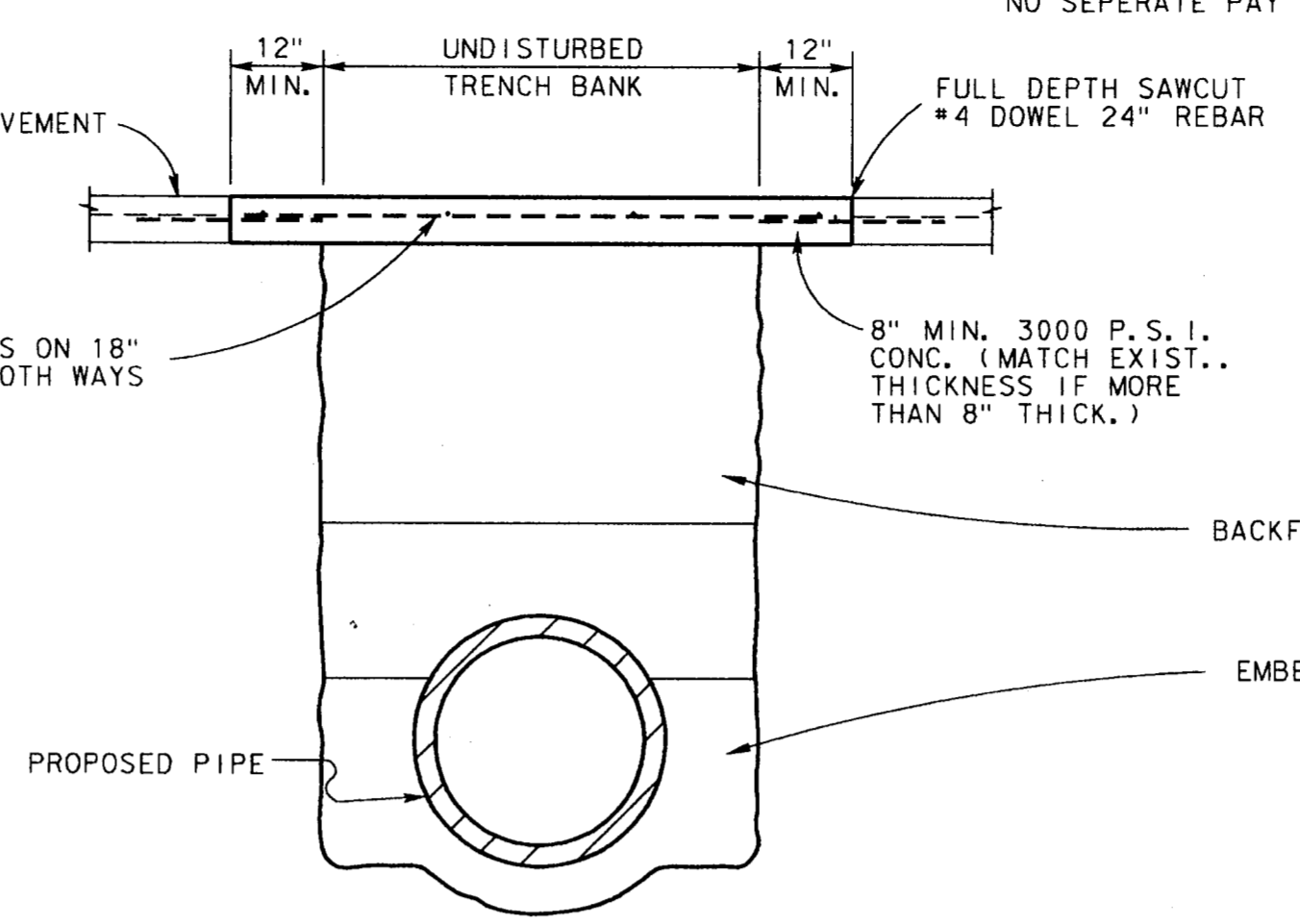


CONSTRUCTION JOINT FOR PAVEMENTS
 FOR 8\"/>

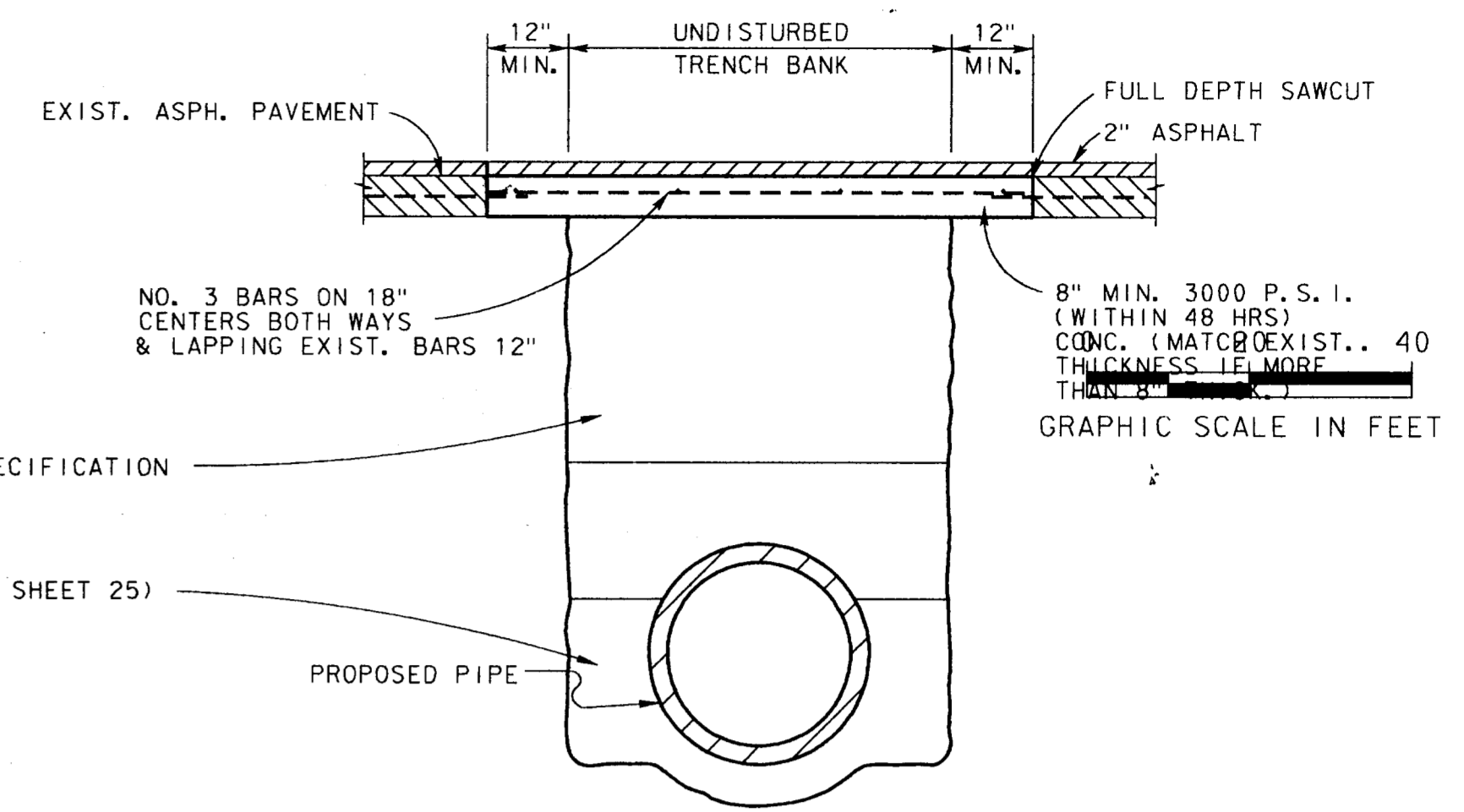
NOTE:
 CONTRACTOR SHALL PROTECT KEYWAY PRIOR TO SECOND POUR. IF LONGITUDINAL KEYWAY IS DAMAGED, CONTRACTOR SHALL REPAIR WITH THE USE OF LONGITUDINAL BUTT JOINT. DRILL DOWELS INTO FIRST POUR.
 T=PAVEMENT THICKNESS
 THICKENED EDGES ARE REQUIRED FOR FUTURE WIDENING ONLY.



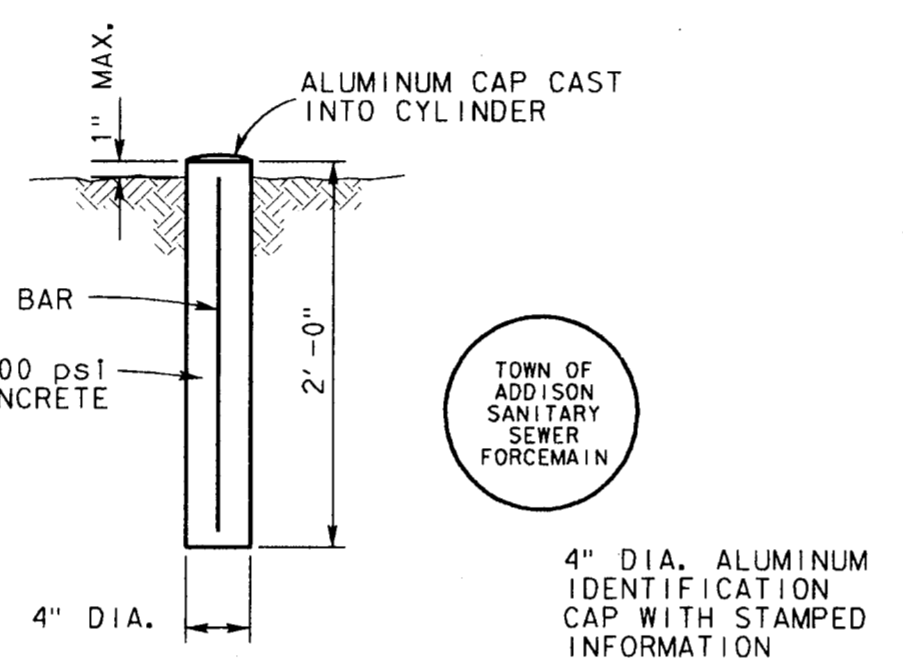
CONCRETE RIPRAP DETAIL



CONCRETE STREET OR DRIVEWAY REPAIR

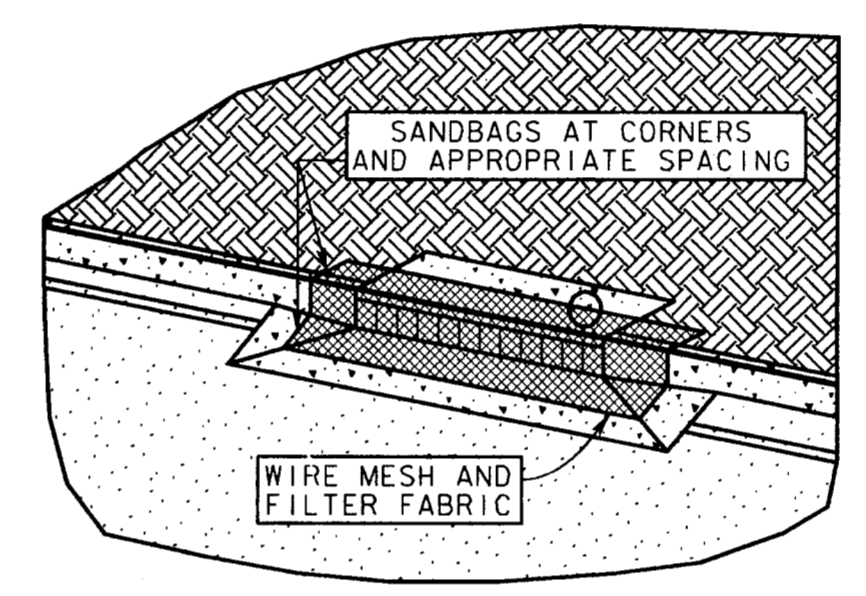


ASPHALT STREET OR DRIVEWAY REPAIR



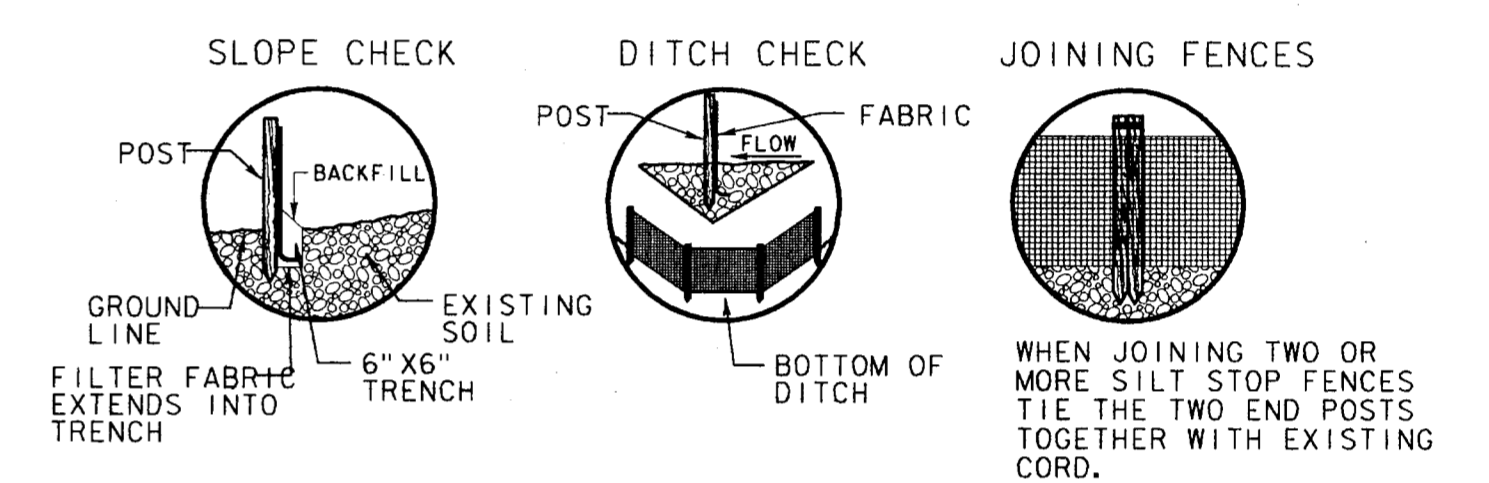
FORCE MAIN MARKER DETAIL

LOCATE FORCE MAIN MARKERS ON CENTERLINE AT 300 FEET MAXIMUM SPACING AND AT ALL P. I.'S.



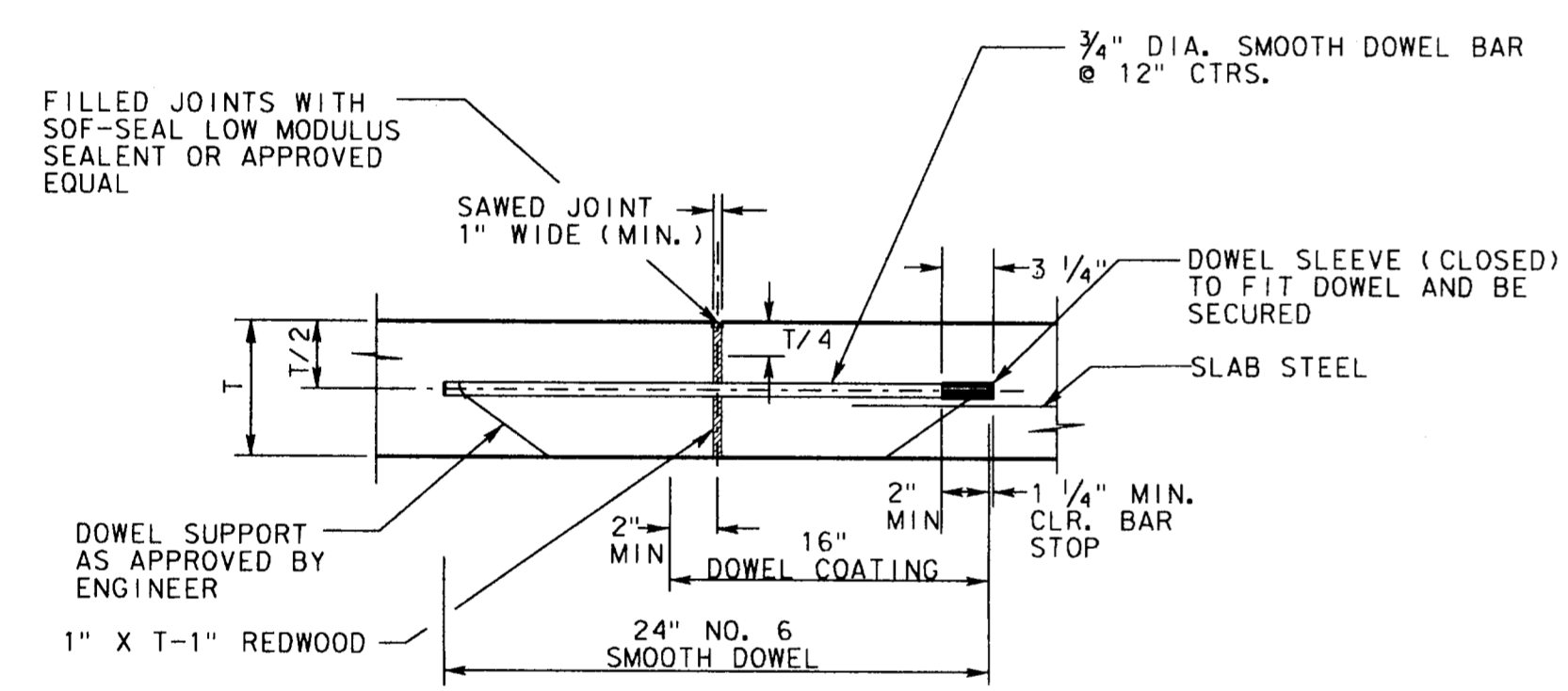
SEDIMENT BARRIER AT INLET OR APPROVED EQUAL

NO SCALE



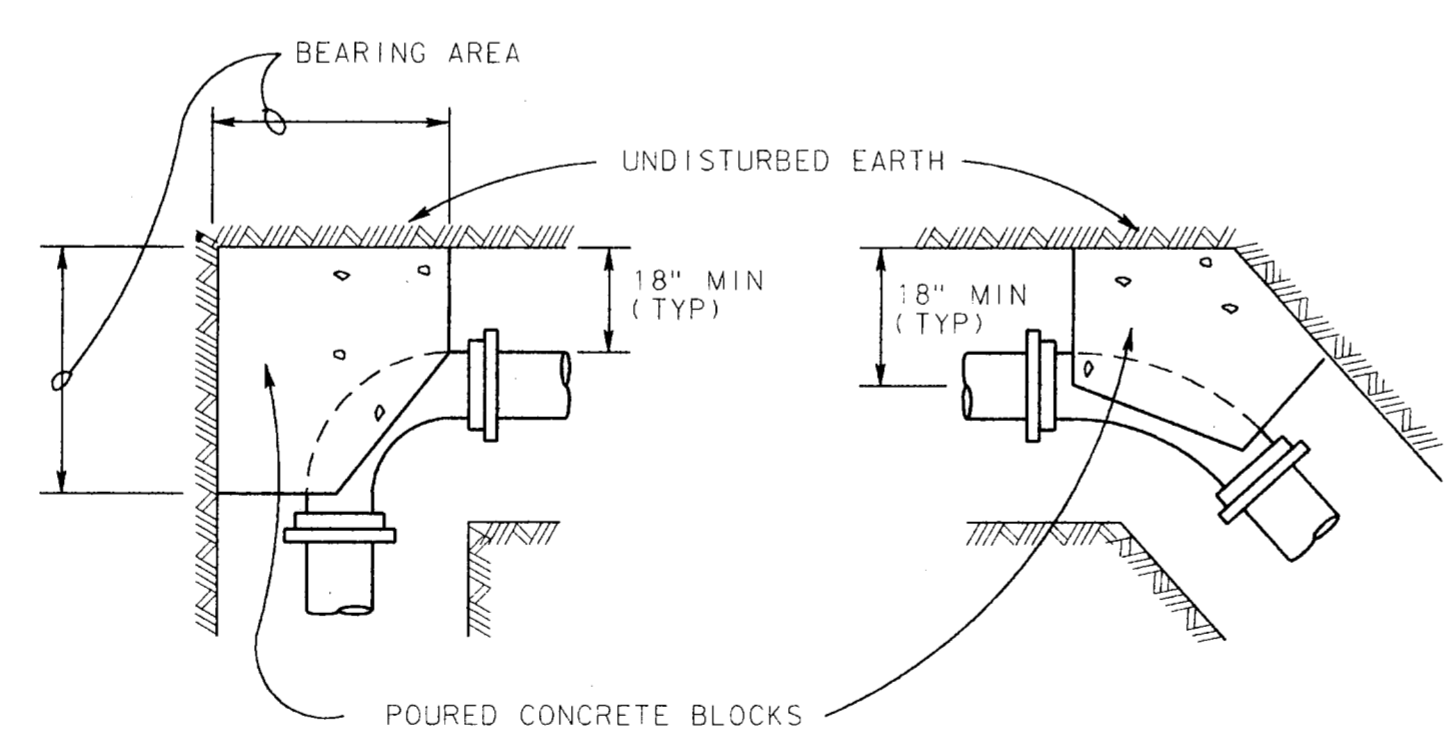
SILT FENCE DETAIL
 (NOT TO SCALE)

NOTE:
 1.) SILT FENCE FABRIC SHALL BE MIRAFI 100 X OR EQUAL.
 2.) INSTALL SILT FENCES AND HAY BALES AT LOCATIONS DIRECTED BY OWNER.
 3.) FENCE POSTS SHALL BE GALVANIZED STEEL AND MAY BE ROLLED, FORMED OR TUBULAR IN CROSS-SECTION. "T" POSTS MAY BE USED WHEN IN CONFORMANCE WITH SPECIFICATION.



TRANSVERSE EXPANSION JOINT

NOTES:
 1. DOWEL SPACER TO BE PLACED ON FIRST POURED SIDE OF DOWELS.
 2. SPACER SHALL BE ALIGNED SUCH THAT DOWELS ARE PARALLEL TO EACH OTHER, AND PERPENDICULAR TO REDWOOD.

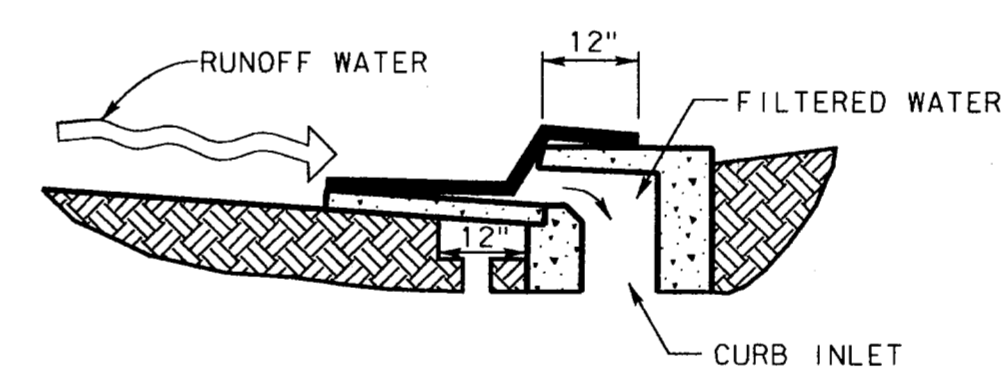


THRUST BLOCK DETAILS
 NOT TO SCALE

FITTING SIZES	BEARING AREA OF BLOCK IN SQ. FT.				
	TEE & END	90° BEND	45° BEND	22 1/2° BEND	11 1/4° BEND
6"	3.6	5.4	2.5	1.5	0.8
8"	6.3	8.9	4.8	2.5	1.3
10"	9.9	13.9	7.6	3.9	2.0
12"	14.2	20.0	10.9	5.6	2.8

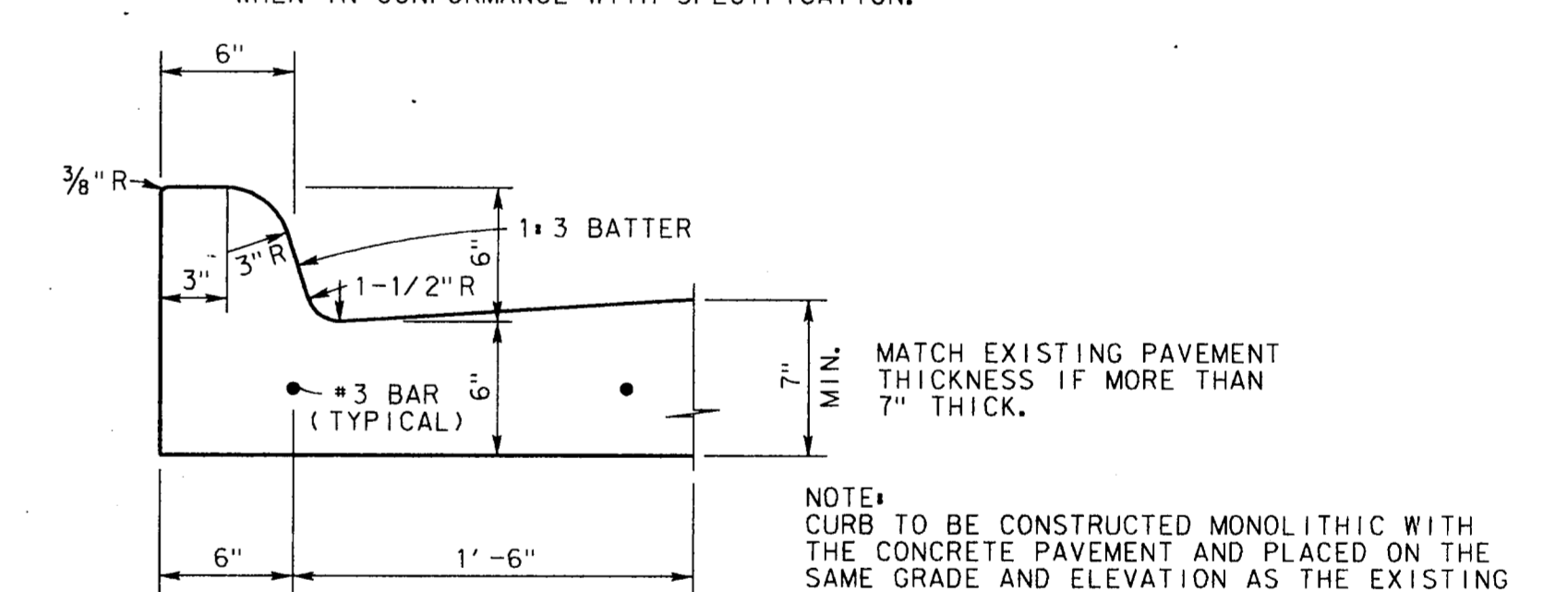
NOTE:
 AREAS BASED ON PIPE BURST PRESSURE OF 250 PSI.
 SOIL BEARING PRESSURE MULTIPLIER

1000	2.0
1500	1.33
2000	1.0
3000	0.67



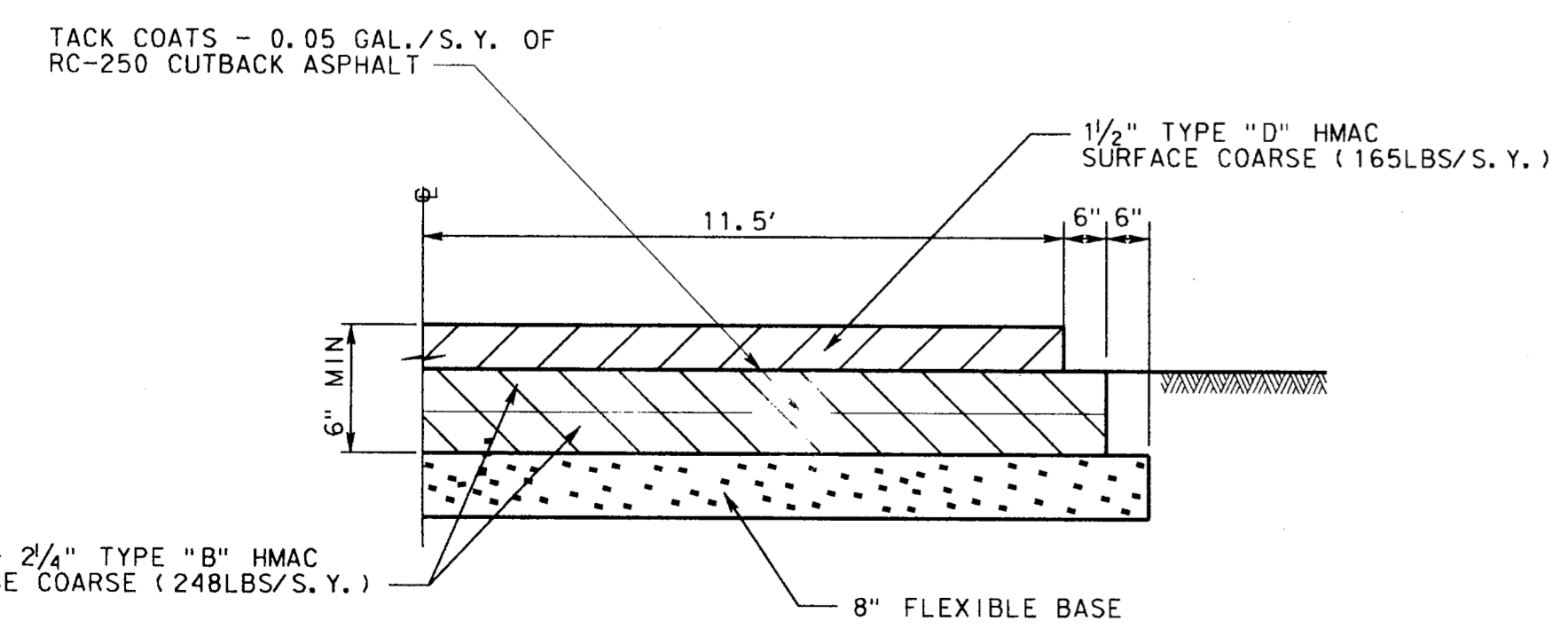
SEDIMENT BARRIER AT INLET OR APPROVED EQUAL

NO SCALE

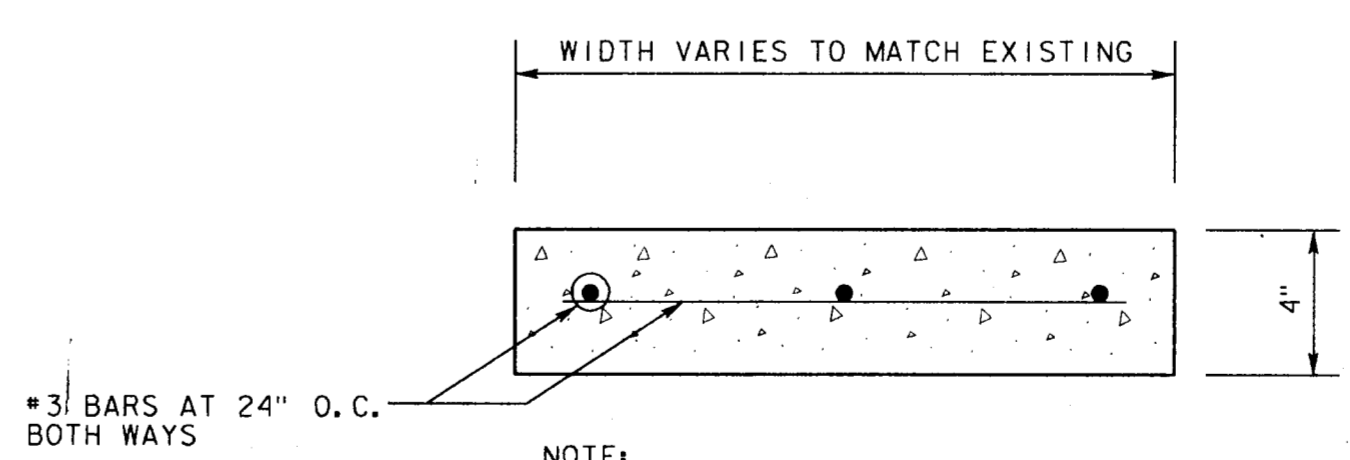


6\"/>

NOTE:
 CURB TO BE CONSTRUCTED MONOLITHIC WITH THE CONCRETE PAVEMENT AND PLACED ON THE SAME GRADE AND ELEVATION AS THE EXISTING CURB.



6 INCH ASPHALT PAVEMENT DETAIL



SIDEWALK REPLACEMENT DETAIL

NOTE:
 CONC. TO HAVE A MINIMUM 2000PSI COMPRESSIVE STRENGTH AT 28 DAYS AND MINIMUM CEMENT CONTENT OF 4 1/2 SACKS (423 LBS) PER CUBIC YD. OF CONCRETE.

4			
3			
2			
1	3-4-98	AS BUILT DRAWING	J. H. L.
NO.	DATE	REVISION	APPROV.

TOWN OF ADDISON, TEXAS
MIDWAY/BELTLINE SANITARY SEWER PHASE II
SANITARY SEWER DETAILS SHEET 2

Carter Burgess
 Consultants in Engineering, Architecture, Planning and the Environment
 CARTER & BURGESS, INC.
 7950 ELMBROOK DRIVE, SUITE 250
 DALLAS, TX 75247-4961

STATE OF TEXAS
 JOHN H. LINDNER
 64694
 REGISTERED PROFESSIONAL ENGINEER
 415196

Unit	Scale	1" = 2'	Date	04-05-98	
Designed	J. Lindner	Checked	J. Lindner	Job No.	93327601D
Drawn	R. Howman	Approved	J. Lindner	Sheet	37 of 63