

INDEX OF SHEETS

SHEET NO.	DRAWING TITLE
1	COVER SHEET
2	INDEX AND SHEET LAYOUT LINES A-1 & A-3
3	SHEET LAYOUT LINES A-2, B & C
3	GENERAL NOTES
4	PLAN & PROFILE STA. 0+00 TO 4+50 LINE A-1
5	PLAN & PROFILE STA. 4+50 TO 9+00 LINE A-1
6	PLAN & PROFILE STA. 9+00 TO 13+50 LINE A-1
7	PLAN & PROFILE STA. 13+50 TO 18+00 LINE A-1
8	PLAN & PROFILE STA. 18+00 TO 22+50 LINE A-1
9	PLAN & PROFILE STA. 0+00 TO 1+29.50 LINE A-3
10	PLAN & PROFILE STA. 22+50 TO 27+00 LINE A-1
11	PLAN & PROFILE STA. 27+00 TO 31+00 LINE A-1
12	PLAN & PROFILE STA. 31+00 TO 34+50 LINE A-1
13	PLAN & PROFILE STA. 34+50 TO 38+00 LINE A-1
14	PLAN & PROFILE STA. 38+00 TO 42+50 LINE A-1
15	PLAN & PROFILE STA. 42+50 TO 47+00 LINE A-1
16	PLAN & PROFILE STA. 47+00 TO 51+50 LINE A-1
17	PLAN & PROFILE STA. 51+50 TO 56+00 LINE A-1
18	PLAN & PROFILE STA. 56+00 TO 60+00 LINE A-1
19	PLAN & PROFILE STA. 60+00 TO 64+00 LINE A-1
20	PLAN & PROFILE STA. 64+00 TO 68+00 LINE A-1
21	PLAN & PROFILE STA. 68+00 TO 72+00 LINE A-1
22	PLAN & PROFILE STA. 72+00 TO 76+00 LINE A-1
23	PLAN & PROFILE STA. 76+00 TO 80+50 LINE A-1
24	PLAN & PROFILE STA. 80+50 TO 85+00 LINE A-1
24	PLAN & PROFILE STA. 85+00 TO 87+84.35 LINE A-1
25	PLAN & PROFILE STA. 115+37.35 TO 119+50 LINE A-2
26	PLAN & PROFILE STA. 119+50 TO 124+00 LINE A-2
27	PLAN & PROFILE STA. 124+00 TO 128+50 LINE A-2
28	PLAN & PROFILE STA. 128+50 TO 132+00 LINE A-2
29	PLAN & PROFILE STA. 132+00 TO 136+50 LINE A-2
30	PLAN & PROFILE STA. 136+50 TO 139+95.27 LINE A-2
31	PLAN & PROFILE STA. 0+90 TO 5+00 LINE B
32	PLAN & PROFILE STA. 5+00 TO 9+00 LINE B
33	PLAN & PROFILE STA. 9+00 TO 13+50 LINE B
34	PLAN & PROFILE STA. 13+50 TO 17+68.31 LINE B
35	PLAN & PROFILE STA. 0+00 TO 3+37.66 LINE C
36	SANITARY SEWER DETAILS - SHEET 1
37	SANITARY SEWER DETAILS - SHEET 2
38	ABANDONMENT DETAIL SHEET
39	LIFT STATION SITE & GRADING PLAN
40	LIFT STATION - FLOOR PLAN
41	LIFT STATION - ARCHITECTURAL BUILDING SECTIONS
42	LIFT STATION - ARCHITECTURAL EXTERIOR ELEVATIONS
43	LIFT STATION - ARCHITECTURAL DETAILS - SHEET 1
44	LIFT STATION - ARCHITECTURAL DETAILS - SHEET 2
45	LIFT STATION - STRUCTURAL PLANS & GENERAL NOTES
46	LIFT STATION - STRUCTURAL BUILDING SECTIONS
47	LIFT STATION - STRUCTURAL BUILDING SECTIONS & DETAILS
48	LIFT STATION - STRUCTURAL DETAILS - SHEET 1
49	LIFT STATION - STRUCTURAL DETAILS - SHEET 2
50	LIFT STATION - MECHANICAL PLAN & SECTION
51	LIFT STATION - MECHANICAL PLAN SECTIONS
52	LIFT STATION - HVAC FLOOR PLANS
53	LIFT STATION - HVAC SECTIONS
54	LIFT STATION - ELECTRICAL SYMBOLS & ABBREVIATIONS
55	LIFT STATION - ELECTRICAL SITE PLAN
56	LIFT STATION - ELECTRICAL FLOOR PLAN
57	LIFT STATION - ELECTRICAL BUILDING SECTIONS
58	LIFT STATION - ELECTRICAL DETAILS
59	LIFT STATION - ELECTRICAL SCHEDULES
60	LIFT STATION - LANDSCAPE ARCHITECTURAL SITE PLAN
61	LIFT STATION - LANDSCAPE ARCHITECTURAL DETAILS
62	LIFT STATION - IRRIGATION SITE PLAN
63	LIFT STATION - IRRIGATION DETAILS

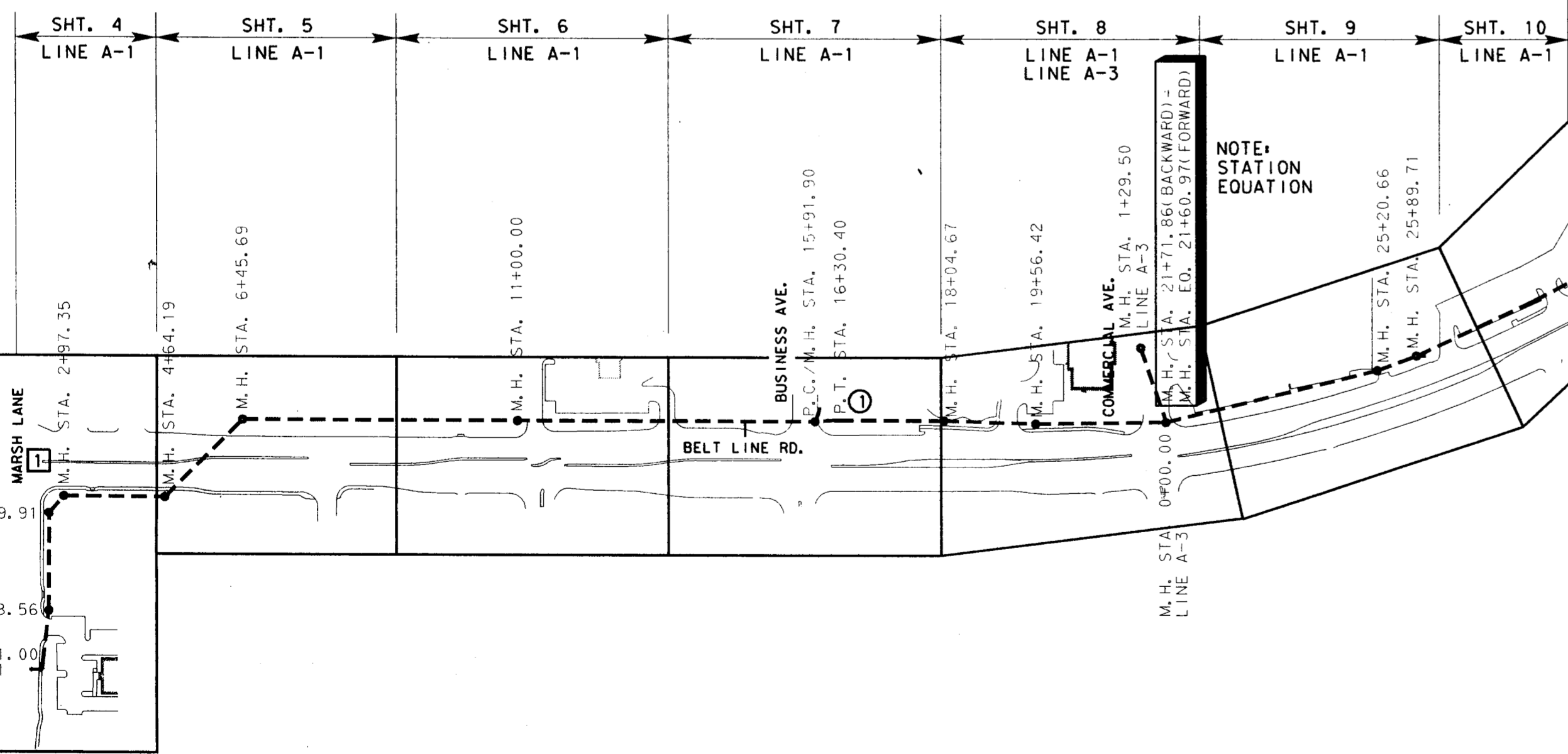
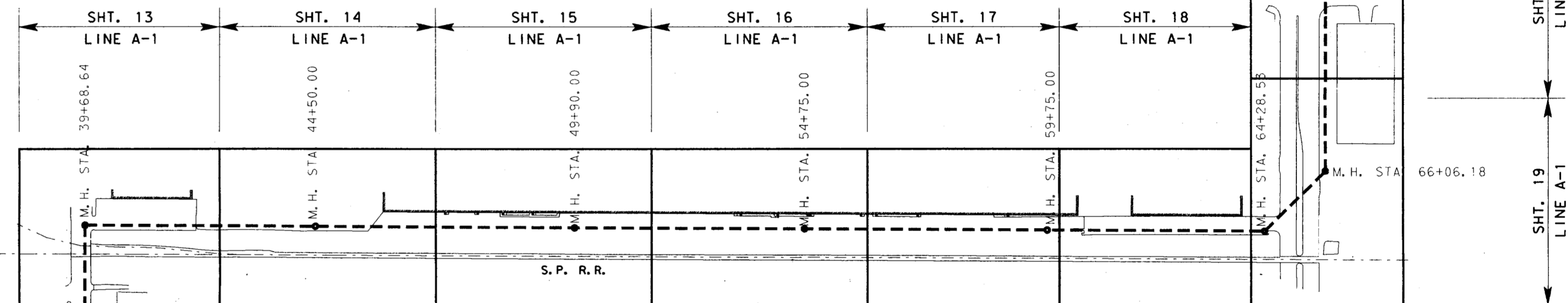
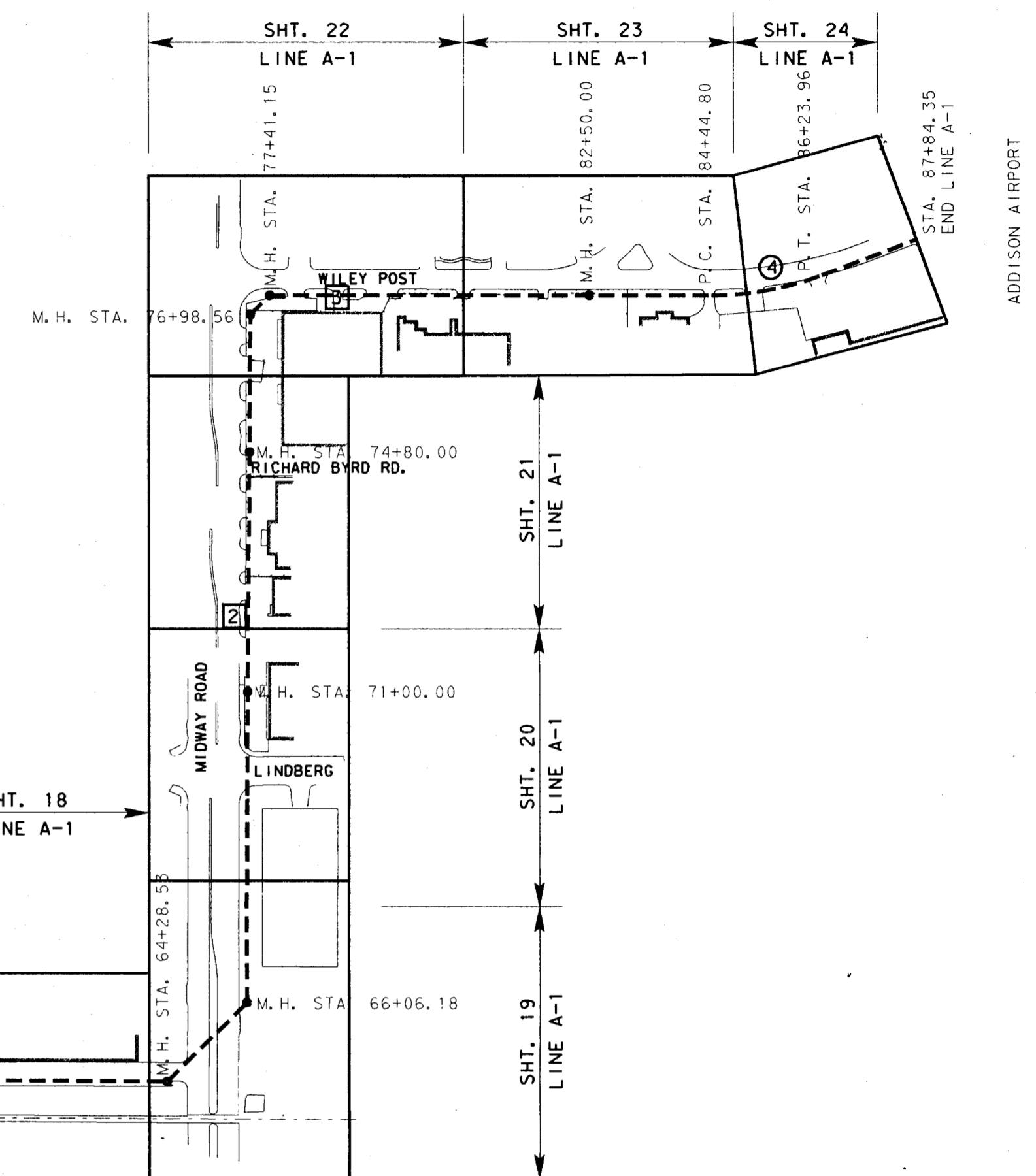
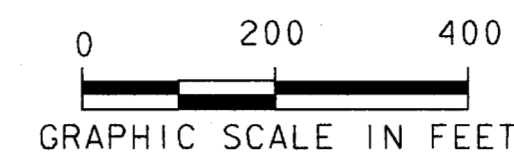
BENCH MARKS

- 1 BM NO. 9A
SQUARE BOX CUT IN NOSE OF MEDIAN IN CENTERLINE BELTLINE DRIVE APPROXIMATELY 50 FEET EAST OF CENTERLINE INTERSECTION WITH MARSH LANE. ELEVATION - 571.24
- 2 BM NO. 38
"X" CUT IN BRAK-O PARKING LOT APPROXIMATELY 16 FEET EAST OF THE EAST RECESSED CURB LINE OF MIDWAY RD. AND APPROXIMATELY 550 FEET SOUTH OF THE CENTERLINE INTERSECTION OF WILEY POST RD. AND MIDWAY RD. ELEVATION - 624.95
- 3 BM NO. P100
"X" CUT IN CONCRETE ENTRANCE OF PARKING LOT SOUTH SIDE OF WILEY POST ROAD APPROXIMATELY 280 FEET EAST OF THE CENTERLINE OF MIDWAY ROAD. ELEVATION - 635.26

CURVE NO.	Δ	R	T	L
1	4° 24' 46"	500.00'	19.26'	38.50'
2	5° 16' 16"	300.00'	13.81'	27.60'
3	6° 25' 01"	300.00'	16.82'	33.60'
4	20° 31' 49"	500.00'	90.56'	179.16'

STATION	POINT	COORDINATES	
		NORTHING	EASTING
0+11.00	BEGIN PIPE	468255.23	2197768.81
0+98.56	M. H.	468342.09	2197779.85
2+59.91	M. H.	468503.44	2197779.79
2+97.35	M. H.	468531.59	2197804.47
4+64.19	M. H.	468531.14	2197971.31
6+45.69	M. H.	468659.48	2198099.65
11+00.00	M. H.	468658.76	2198553.96
15+91.90	M. H./P. C.	468657.97	2199045.86
16+30.40	P. T.	468660.30	2199084.28
18+04.67	M. H.	468659.78	2199258.55
19+56.42	M. H.	468654.77	2199410.21
21+71.86	M. H.	468657.50	2199625.63
21+60.97	M. H./STA. EQ.	468657.50	2199625.63
25+20.66	M. H.	468743.17	2199974.98
25+89.71	M. H.	468767.27	2200039.68
29+51.57	M. H.	468924.43	2200365.63
30+50.78	M. H./P. C./STA. EQ.	469105.72	2200448.23
31+41.41	M. H./P. C.	469105.72	2200448.23
31+69.01	P. T.	469133.25	2200446.52
32+48.66	P. C.	469212.44	2200437.95
32+82.26	P. T.	469245.98	2200436.20
35+72.53	M. H.	469536.24	2200437.38
36+82.90	M. H.	469646.39	2200430.32
39+68.64	M. H.	469932.13	2200431.51
44+50.00	M. H.	469929.66	2200912.87
49+90.00	M. H.	469926.83	2201452.86
54+75.00	M. H.	469924.42	2201931.34
59+75.00	M. H.	469921.82	2202437.84
64+28.53	M. H.	469919.49	2202891.37
66+06.18	M. H.	470044.46	2203017.63
71+00.00	M. H.	470538.27	2203020.00
74+80.00	M. H.	470918.27	2203023.32
76+98.56	M. H.	471136.82	2203025.06
77+41.15	M. H.	4471166.79	2203055.17
82+50.00	M. H.	471166.50	2203564.03
84+44.80	P. C.	471166.35	2203758.82
86+23.96	P. T.	471198.00	2203934.20
87+84.35	END	471254.15	2204084.44

STATION	POINT	COORDINATES	
		NORTHING	EASTING
0+00.00	M. H.	468657.50	2199625.63
1+29.50	M. H.	468780.13	2199584.01



NO.	DATE	REVISION	APPROV.
4			
3	9-4-98	AS BUILT DRAWING	J. H. L.
2	10-29-98	REVISED MANHOLE LOCATION	J. H. L.
1			

TOWN OF ADDISON, TEXAS
 MIDWAY/BELTLINE SANITARY SEWER
 PHASE II
 INDEX AND SHEET LAYOUT
 LINES A-1 AND A-3



Consultants in Engineering, Architecture,
 Planning and the Environment
 CARTER & BURGESS, INC.
 7950 EMBROOK DRIVE, SUITE 250
 DALLAS, TX 75247-4961

Unit	Scale	Date
	1"=200'	04-05-96
Designed	J. Lindner	Checked J. Lindner
Drawn	R. Howman	Approved J. Lindner
Sheet	1 of 63	Job No. 93327601D

JOHN H. LINDNER
 64694
 REGISTERED PROFESSIONAL ENGINEER
 STATE OF TEXAS
 10/30/96