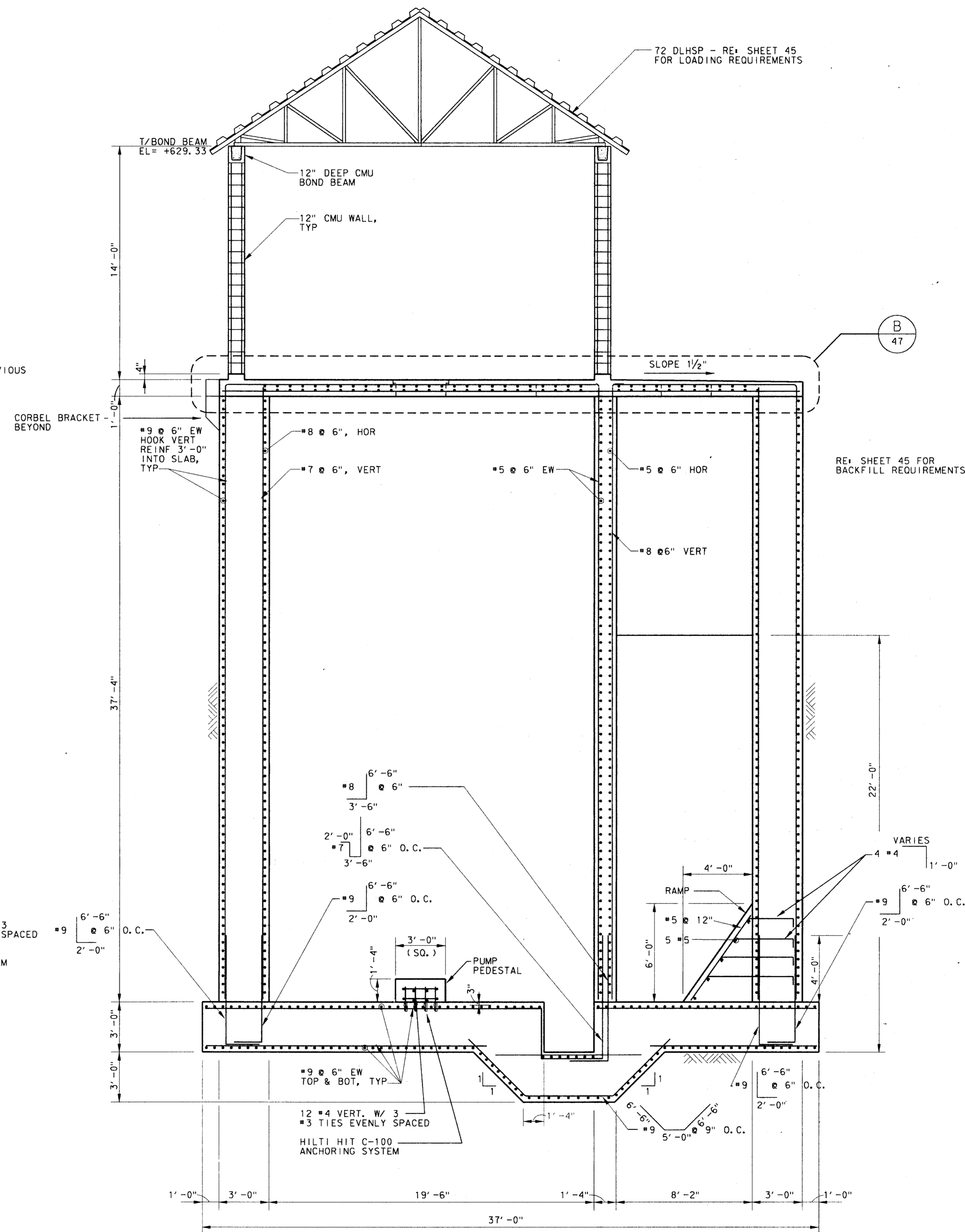


SECTION A  
1/4" = 1'-0"

NOTE: BRACE WALLS CONTINUOUSLY AT TOP DURING BACKFILLING OPERATION. BRACING TO REMAIN IN PLACE UNTIL TOP SLAB HAS REACHED 75% OF ITS DESIGN STRENGTH.



SECTION B  
1/4" = 1'-0"

4			
3			
2			
1	9-4-98	AS BUILT DRAWING	J. H. L.
NO.	DATE	REVISION	APPROV.

TOWN OF ADDISON, TEXAS  
MIDWAY/BELTLINE SANITARY SEWER  
PHASE II

LIFT STATION  
STRUCTURAL BUILDING SECTIONS



Carter & Burgess, Inc.  
7950 ELMBROOK DRIVE, SUITE 250  
DALLAS, TX 75247-4961

Unit	Scale	Date	04-05-96
Designed	K. Houghton	Checked	K. Houghton
Drawn	C. Sammons	Approved	J. Lindner
Job No.	93327601D	Sheet	46 of 63

9/5/96