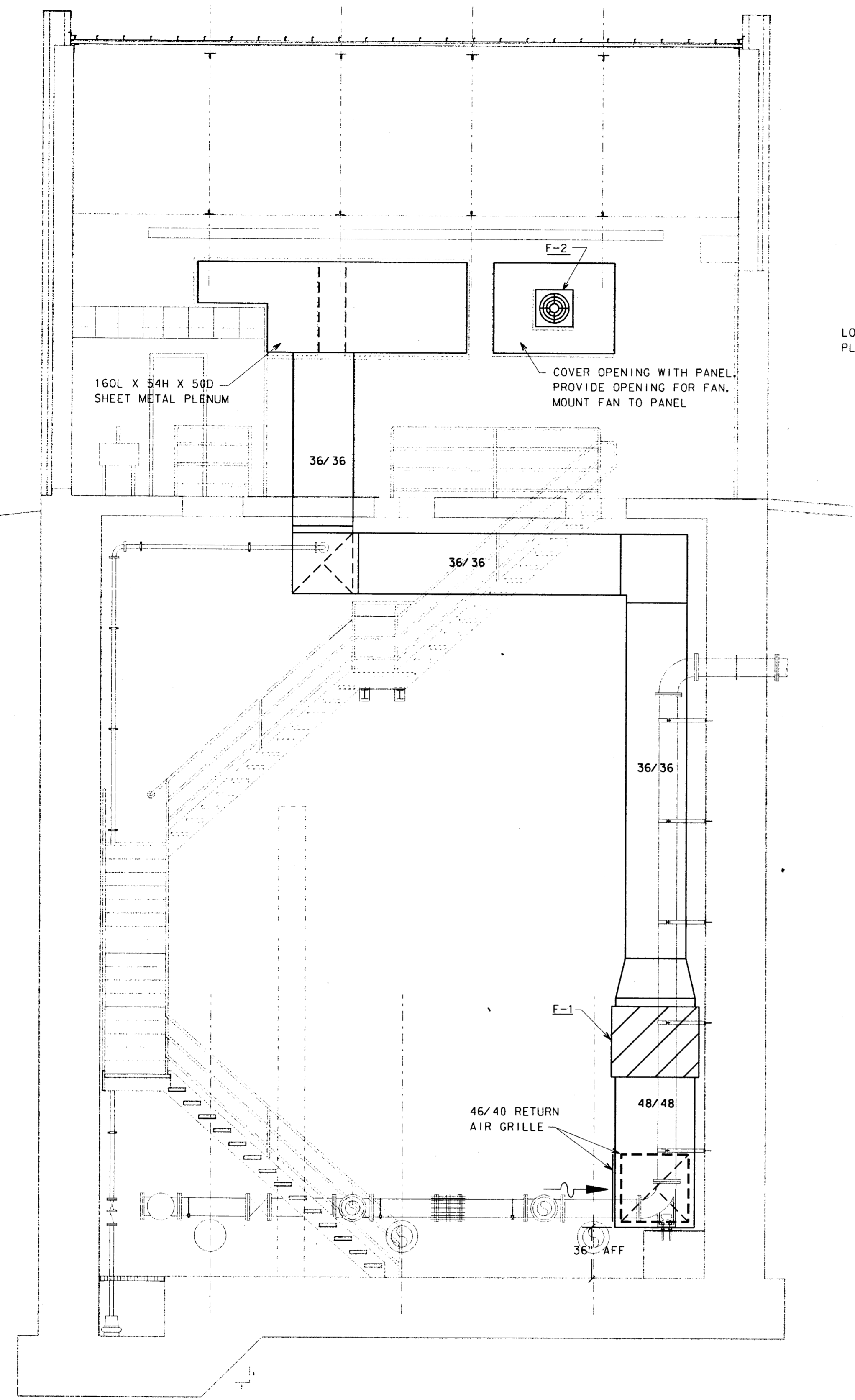
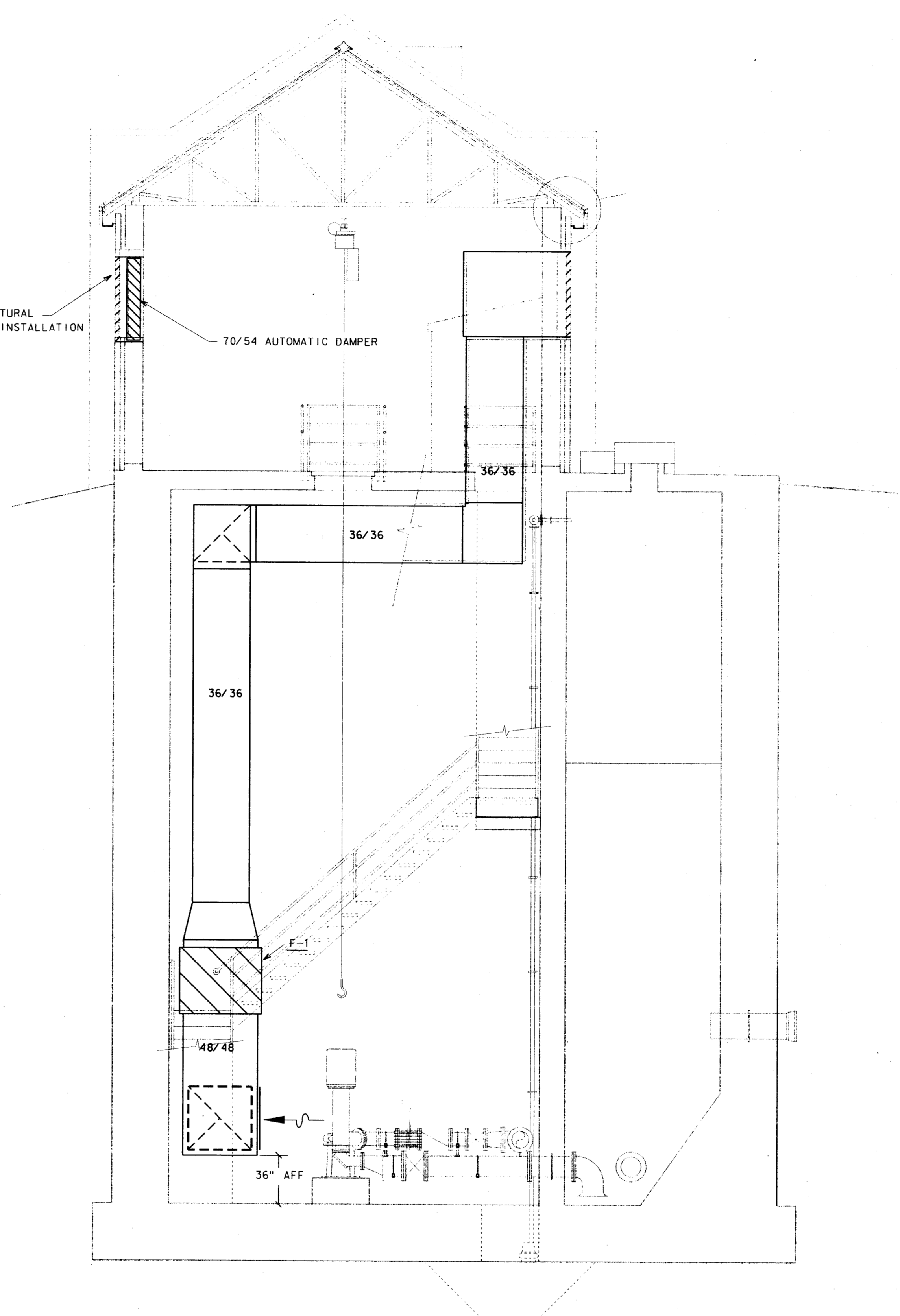


MECHANICAL
 ELECTRICAL
 PLUMBING
 STRUCTURAL
 CIVIL
 GENERAL CONTRACTOR
 ARCHITECT
 ENVIRONMENTAL
 LANDSCAPE ARCHITECTURE
 HISTORIC PRESERVATION
 INTERIOR DESIGN
 TRAFFIC ENGINEERING
 TRANSPORTATION ENGINEERING
 WATER RESOURCES ENGINEERING
 WASTE MANAGEMENT ENGINEERING
 AIR POLLUTION CONTROL ENGINEERING
 RISK ASSESSMENT
 CONSULTING ENGINEERING



SECTION A
1/4" = 1'-0" 53

LOUVER SEE ARCHITECTURAL PLANS FOR SIZE AND INSTALLATION



SECTION B
1/4" = 1'-0" 53

4			
3			
2			
1	9-4-98	AS BUILT DRAWING	J. M. L.
NO.	DATE	REVISION	APPROV.
TOWN OF ADDISON, TEXAS			
MIDWAY/BELTLINE SANITARY SEWER PHASE II			
LIFT STATION - HVAC SECTIONS			
Carter-Burgess <small>Consultants in Engineering, Architecture, Planning and the Environment</small> CARTER & BURGESS, INC. <small>7950 ELMBROOK DRIVE, SUITE 250 DALLAS, TX 75247-4961</small>			
Unit	Scale	1/4" = 1'-0"	Date
Designed	J. Grzelokowski	Checked	J. Lindner
Drawn	J. Grzelokowski	Approved	J. Lindner
		Job No.	933276010
		Sheet	53 of 63

