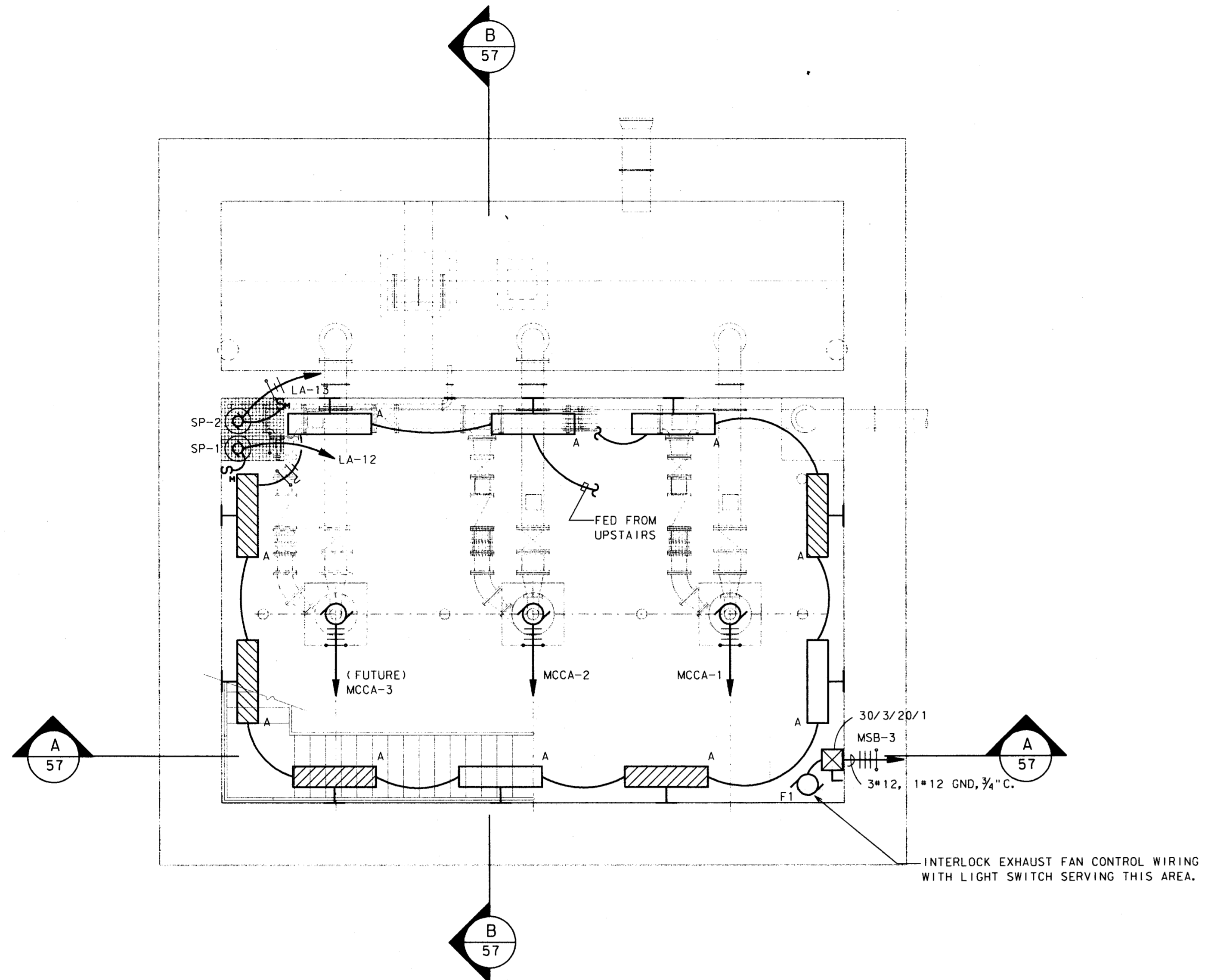
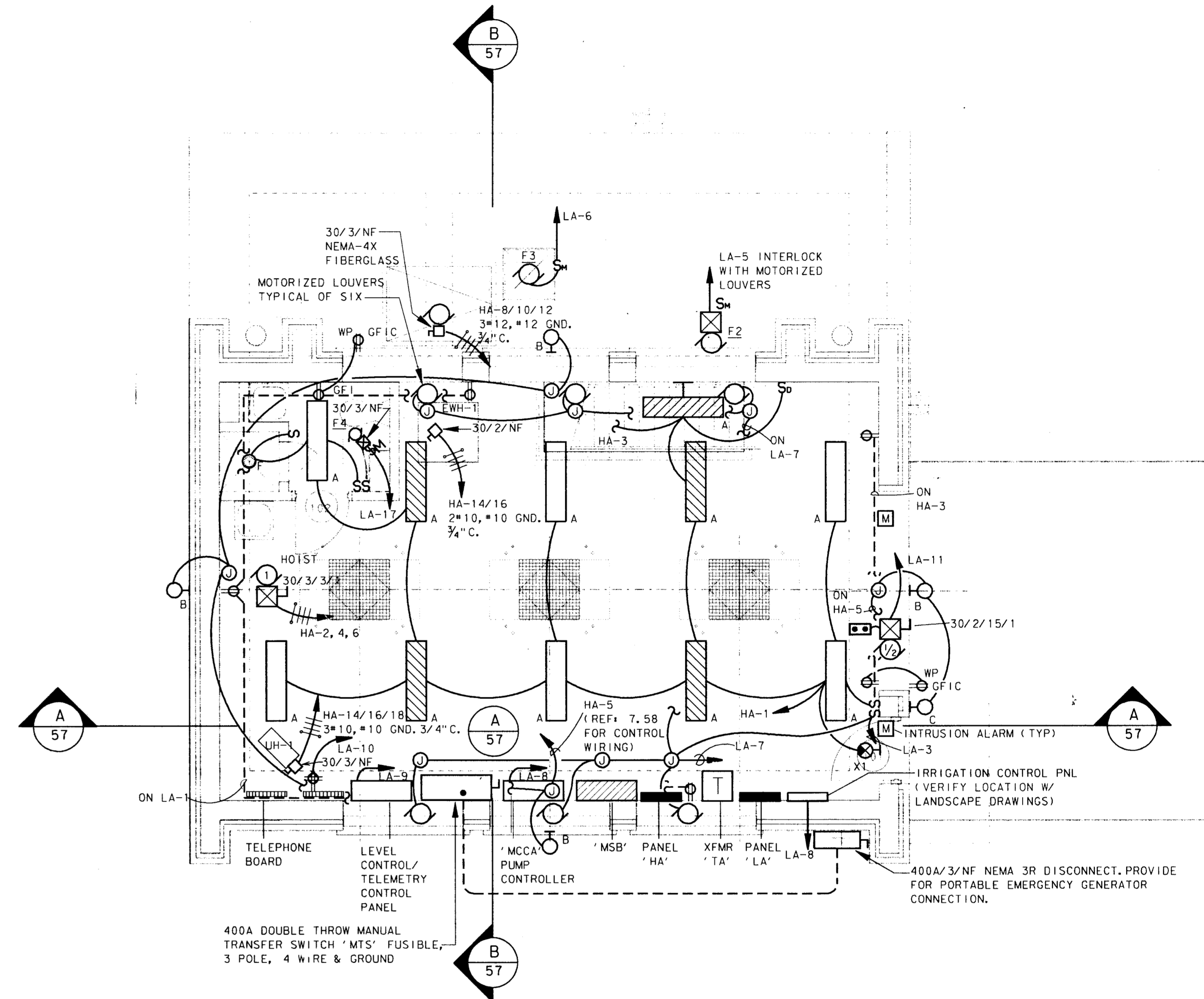


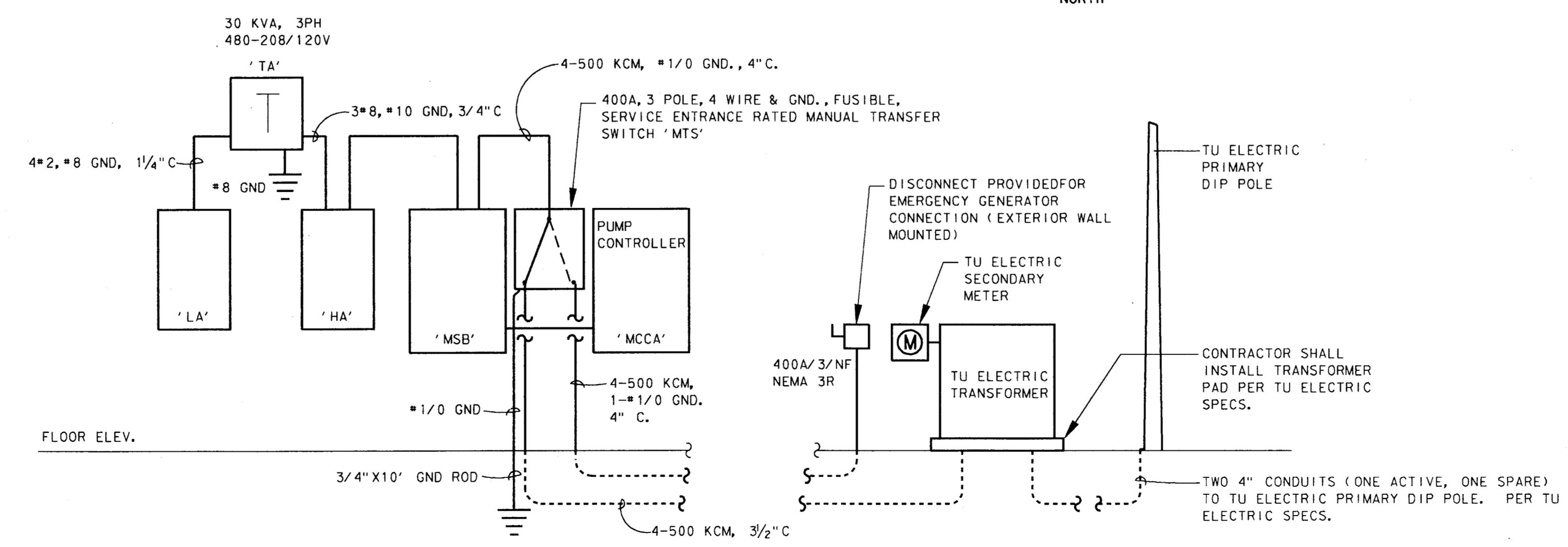
PROJECT NO. 93327601D
 SHEET NO. 56 OF 63
 DATE 04-05-96
 DRAWN BY J. WEBB
 CHECKED BY J. LINDNER
 APPROVED BY J. LINDNER
 PROJECT TITLE: MIDWAY/BELTLINE SANITARY SEWER PHASE II
 LIFT STATION ELECTRICAL FLOOR PLAN
 CONTRACTOR: RICHARD S. POWER
 7950 ELMBROOK DRIVE, SUITE 250
 DALLAS, TX 75247-4960



LOWER LEVEL LIGHTING/POWER
 SCALE: 1/4" = 1' - 0"



GROUND LEVEL LIGHTING/POWER
 SCALE: 1/4" = 1' - 0"



ELECTRICAL RISER DIAGRAM
 SCALE: NO SCALE

4			
3			
2			
1	9-4-98	AS BUILT DRAWING	J. H. L.
NO.	DATE	REVISION	APPROV.
TOWN OF ADDISON, TEXAS			
MIDWAY/BELTLINE SANITARY SEWER PHASE II			
LIFT STATION ELECTRICAL FLOOR PLAN			
 Carter & Burgess <small>Consultants in Engineering, Architecture, Planning and the Environment</small> CARTER & BURGESS, INC. <small>7950 ELMBROOK DRIVE, SUITE 250 DALLAS, TX 75247-4960</small>			
Unit	Scale	Date	04-05-96
Designed	J. Webb	Checked	J. Lindner
Drawn	J. Webb	Approved	J. Lindner
Job No.	93327601D	Sheet	56 of 63

