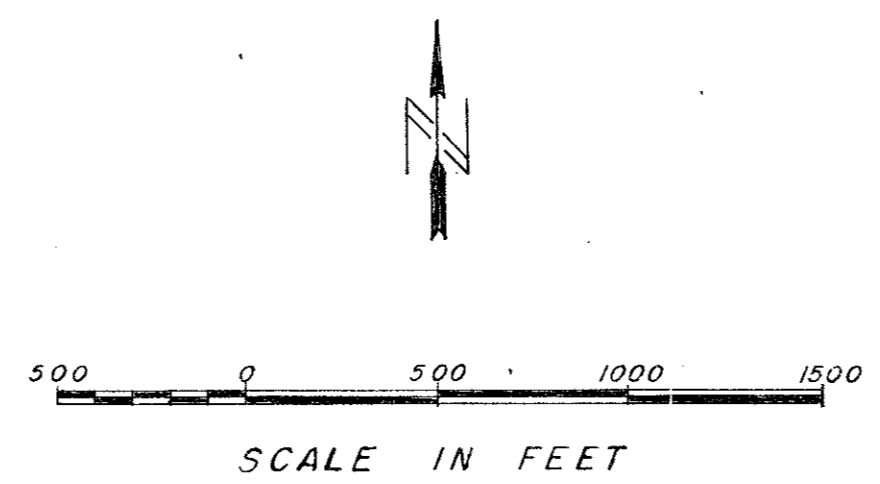
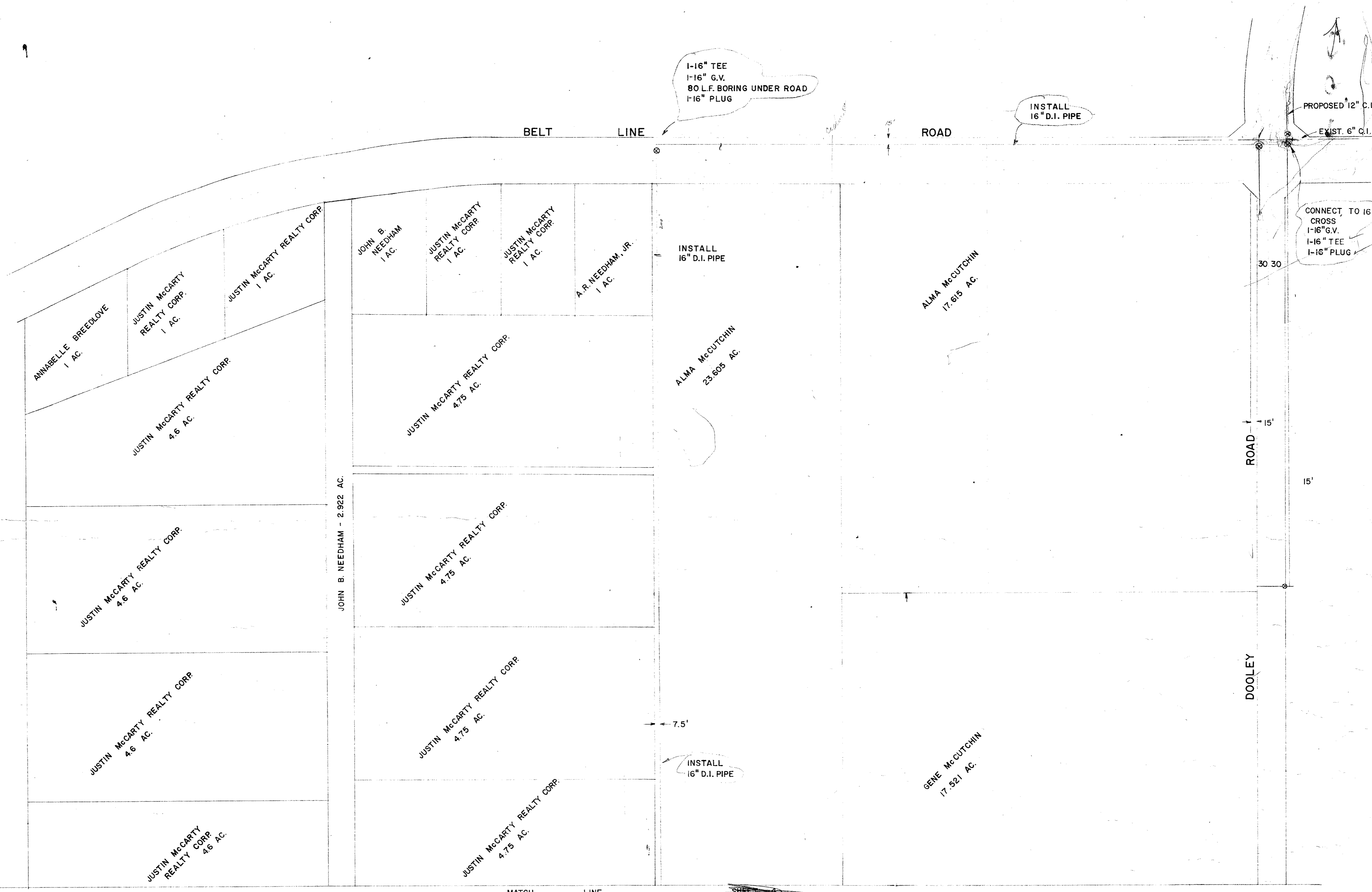


THIS CONTRACT
SHEET 3-5



CITY OF ADDISON, TEXAS WATER SYSTEM IMPROVEMENTS

RIEWE & WISCHMEYER, INC.
CONSULTING ENGINEERS
DALLAS, TEXAS



1-16" TEE
 1-16" G.V.
 80 L.F. BORING UNDER ROAD
 1-16" PLUG

INSTALL
 16" D.I. PIPE

CONNECT TO 16"
 CROSS
 1-16" G.V.
 1-16" TEE
 1-16" PLUG

INSTALL
 16" D.I. PIPE

ALMA McCUTCHIN
 23.605 AC.

INSTALL
 16" D.I. PIPE

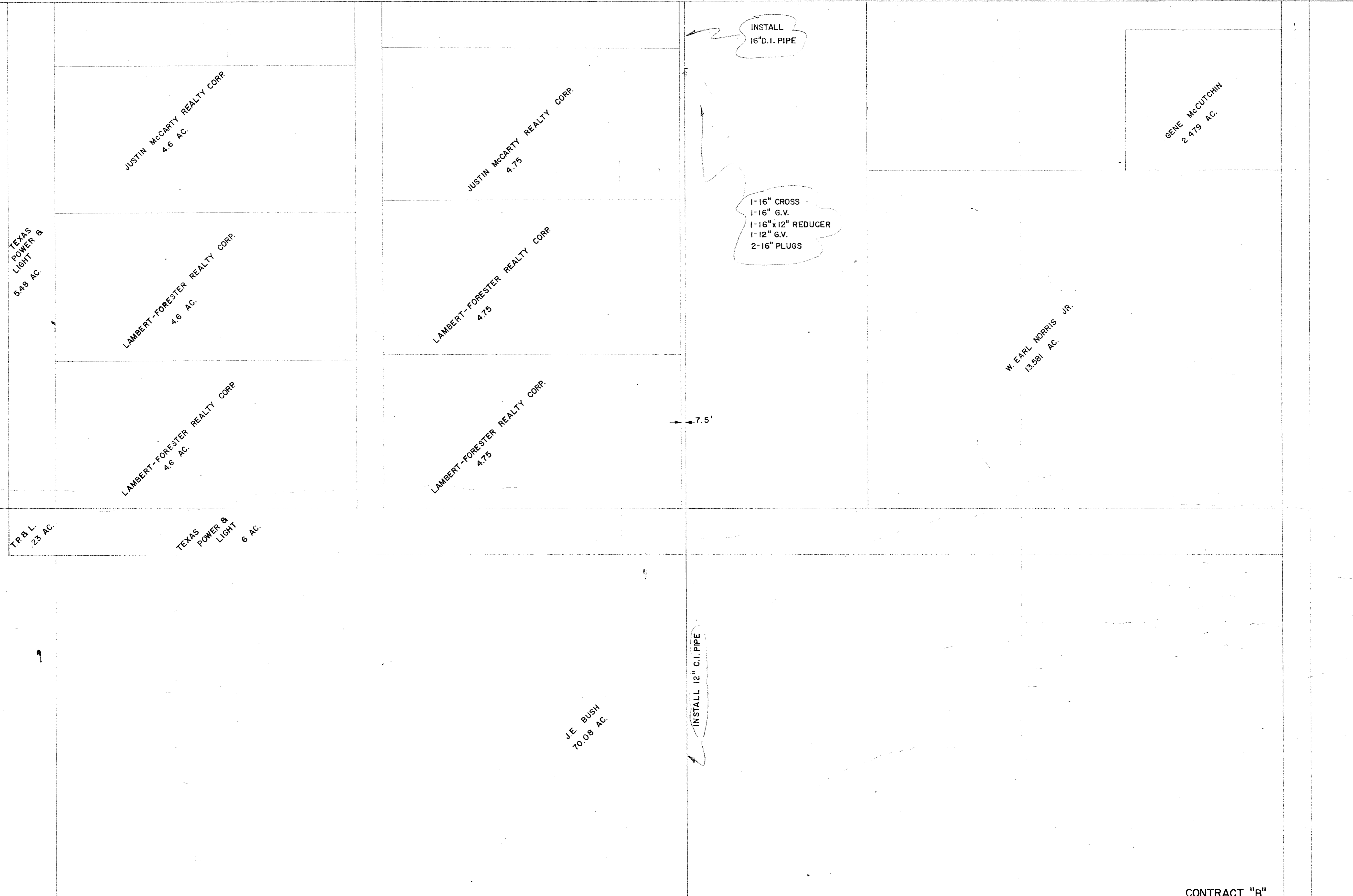
QUANTITIES	CONTRACT
5,100	L.F. 12" C.I. PIPE
80	L.F. FOR MACHINE BORE FOR 16" D.I. PIPE
2	EA. WET CONNECTION TO EXIST. WATER MAIN
5	EA. 12" G.V.
80	SY. ASPHALTIC CONCRETE PAVEMENT
3.6	TON CAST IRON FITTINGS
18	L.F. 8" C.I. PIPE
3	E.A. 16" G.V.
3,050	L.F. 16" D.I. PIPE

CONTRACT "B"
 ADDISON, TEXAS
WATER SYSTEM IMPROVEMENTS

DESIGNED: _____
 APPROVED: E.M.R.
 DATE: JULY 1971

Riewe & Wischmeyer, Inc.
 CONSULTING ENGINEERS
 DALLAS, TEXAS

JOB NO. _____ SHEET NO. 3 of 5 SCALE: 1"=100'



CONTRACT "B"

ADDISON, TEXAS

WATER SYSTEM IMPROVEMENTS

Riewe & Wischmeyer, Inc.
 CONSULTING ENGINEERS
 DALLAS, TEXAS

DESIGNED: _____
 APPROVED: E.M.R.
 DATE: JULY 1971

JOB NO. _____ SHEET NO. 4 of 5 SCALE: 1"=100'

MATCH LINE

J.E. BUSH
70.08 AC.

GREENHILL SCHOOLS & CORPORATION
81.106 AC.

ROAD

DOOLEY

INSTALL 12" C.I. PIPE

2-12" TEE
2-12" PLUG
2-12" G.V.

INSTALL 12" C.I. PIPE

SPRING VALLEY ROAD

1-12" TEE
1-12" PLUG

EXIST. 8" C.I.

1-WET CONNECTION
(REMOVE EXIST. 8" TEE, 8" G.V., & 12"x8" REDUCER)

INSTALL
1-12" TEE
1-12" G.V.
1-REINSTALL 8" G.V. ON WEST SIDE OF TEE

INSTALL 12" C.I. PIPE

1-12" TEE
1-12" G.V.

CONTRACT "B"

ADDISON, TEXAS

WATER SYSTEM IMPROVEMENTS

Riewe & Wischmeyer, Inc.
CONSULTING ENGINEERS
DALLAS, TEXAS

DESIGNED:
APPROVED: E.M.R.
DATE: JULY 1971

JOB NO. SHEET NO. 5 of 5 SCALE: 1"=100'

7-98

S

S

S

105

662
496
1158

4-17-71
3-26
3-26