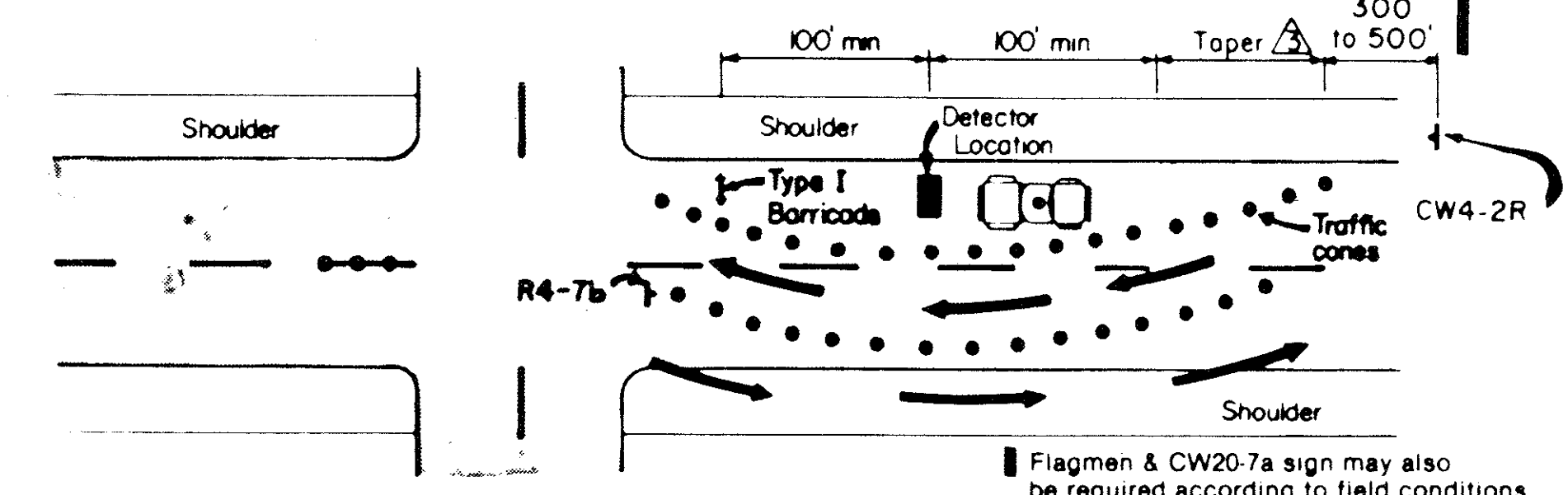
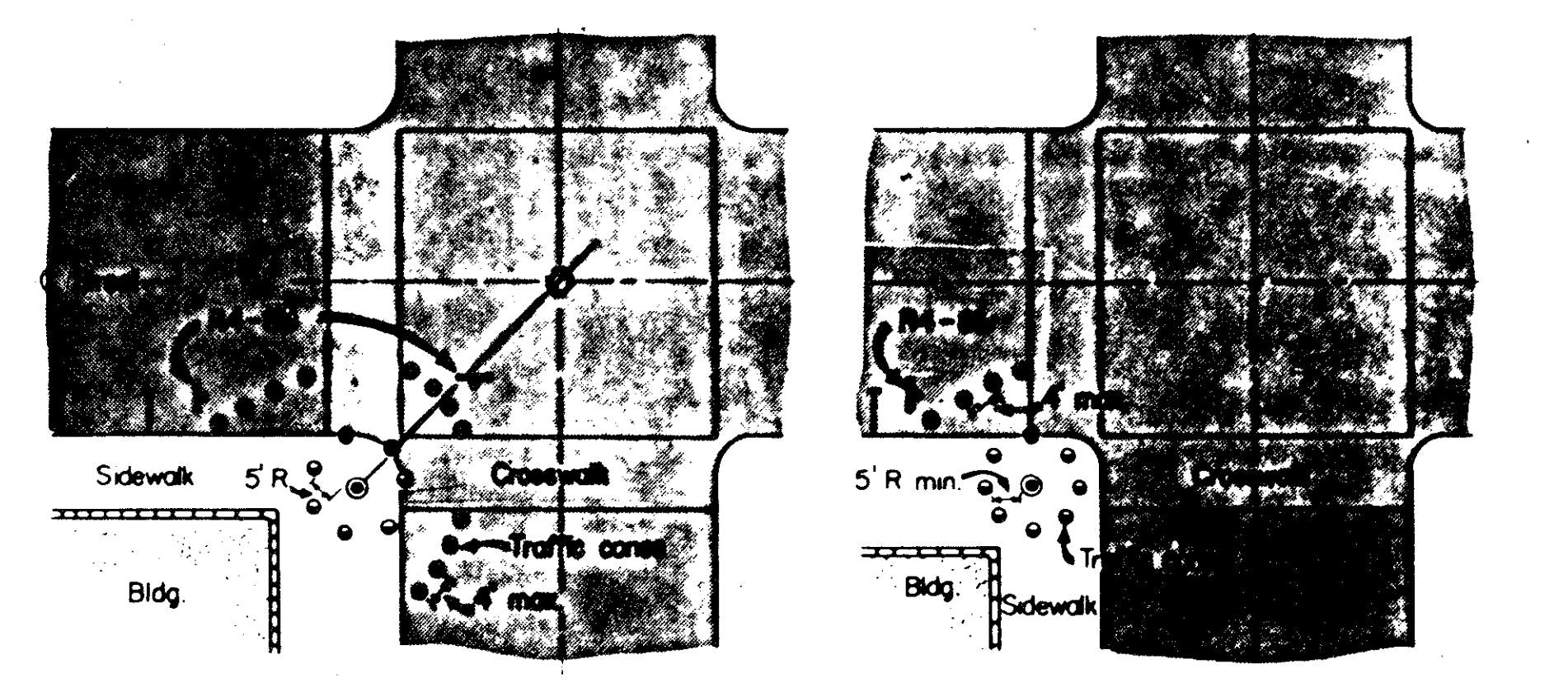


Daytime - Four Lane Roadway

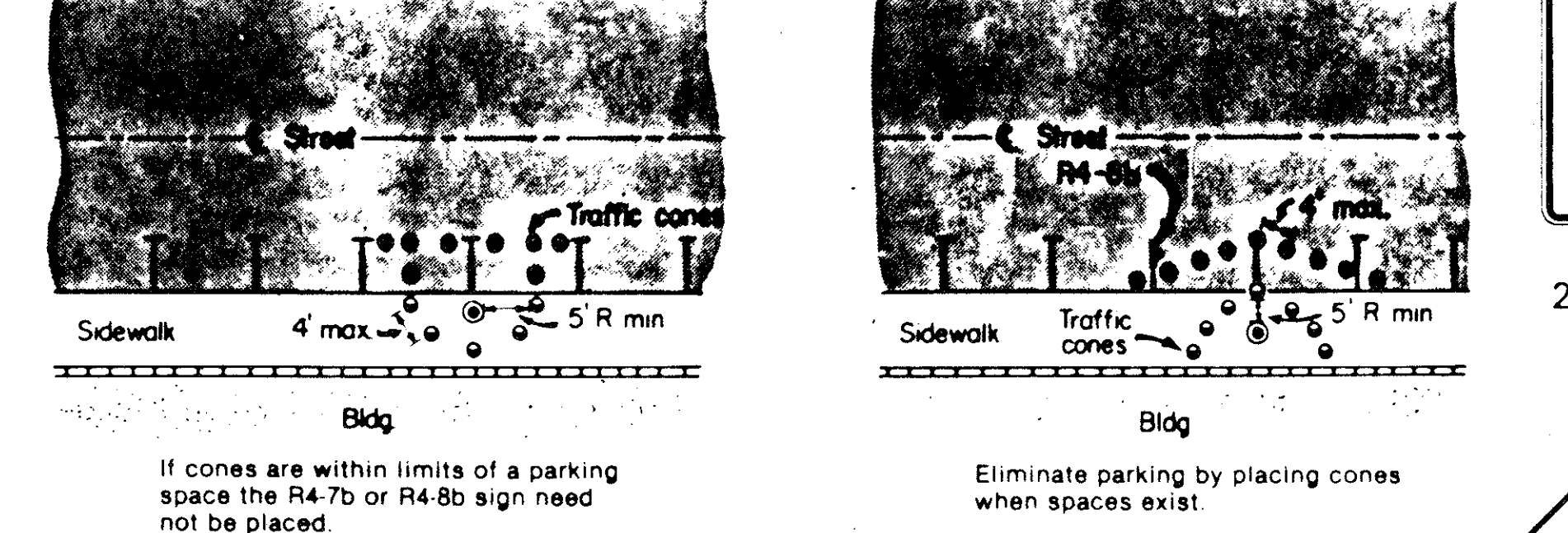


Daytime - Two Lane Roadway

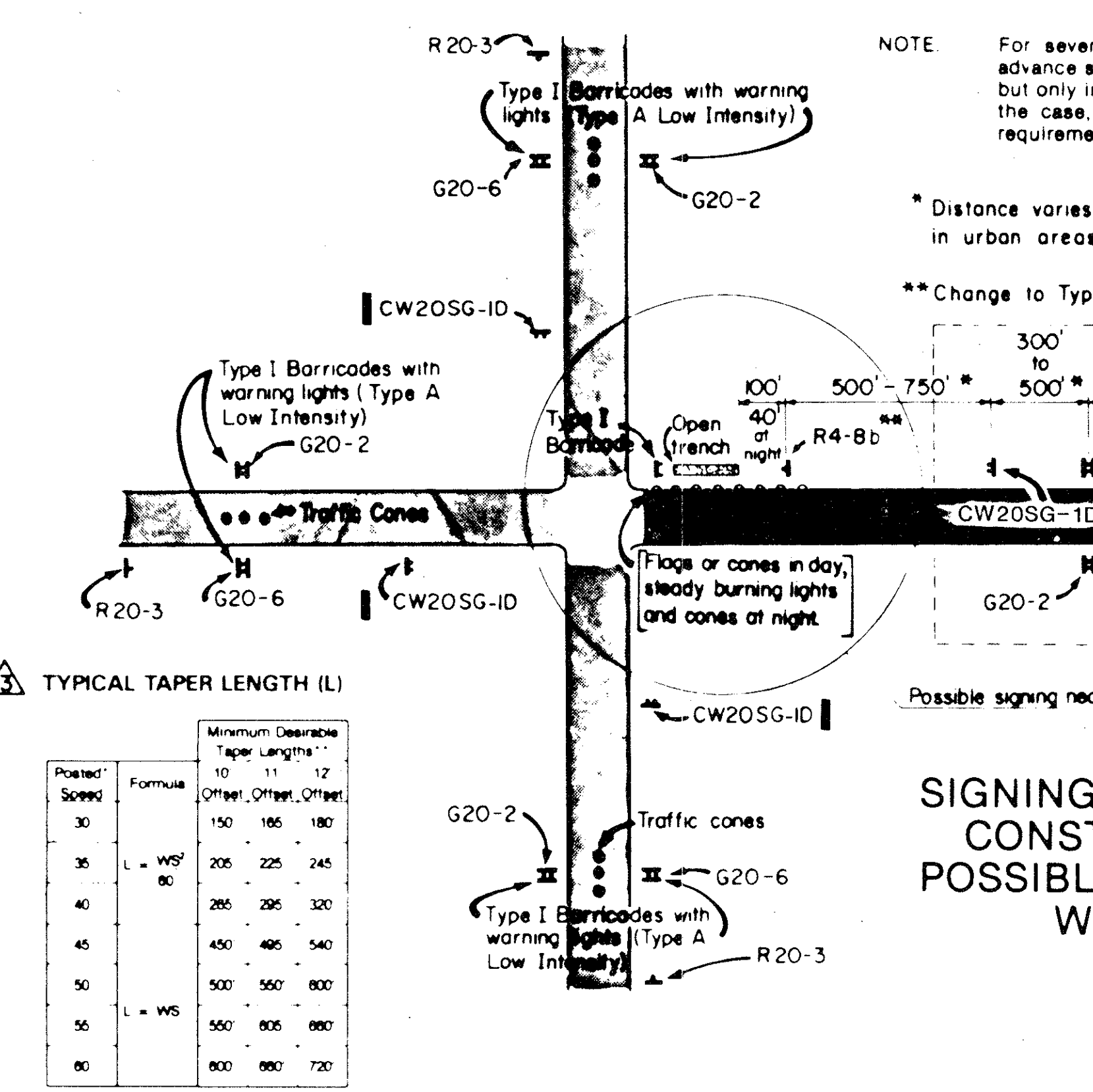
At Night—1. Steady burn lamps for delineation instead of cones.
2. Flashers on barricades.



TYPICAL RESTRICTED PEDESTRIAN MOVEMENTS



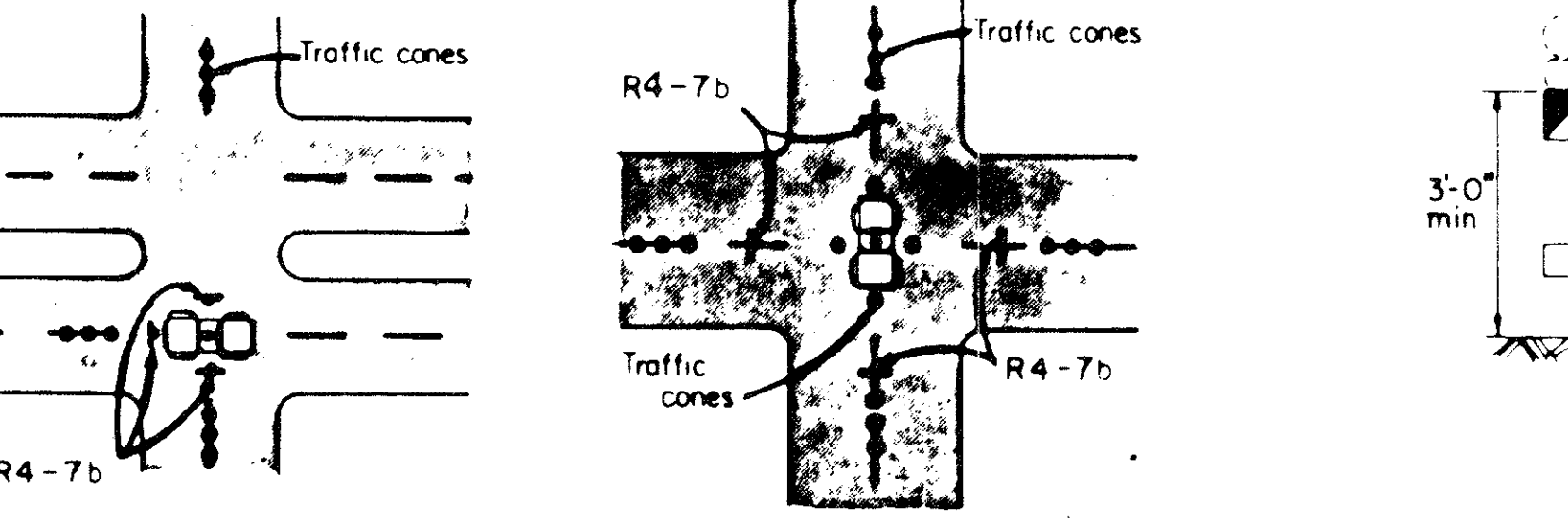
Where pedestrian movements are anticipated at night, all holes, trenches or other hazardous areas shall be adequately protected by use of barricades, lights or other protective devices.



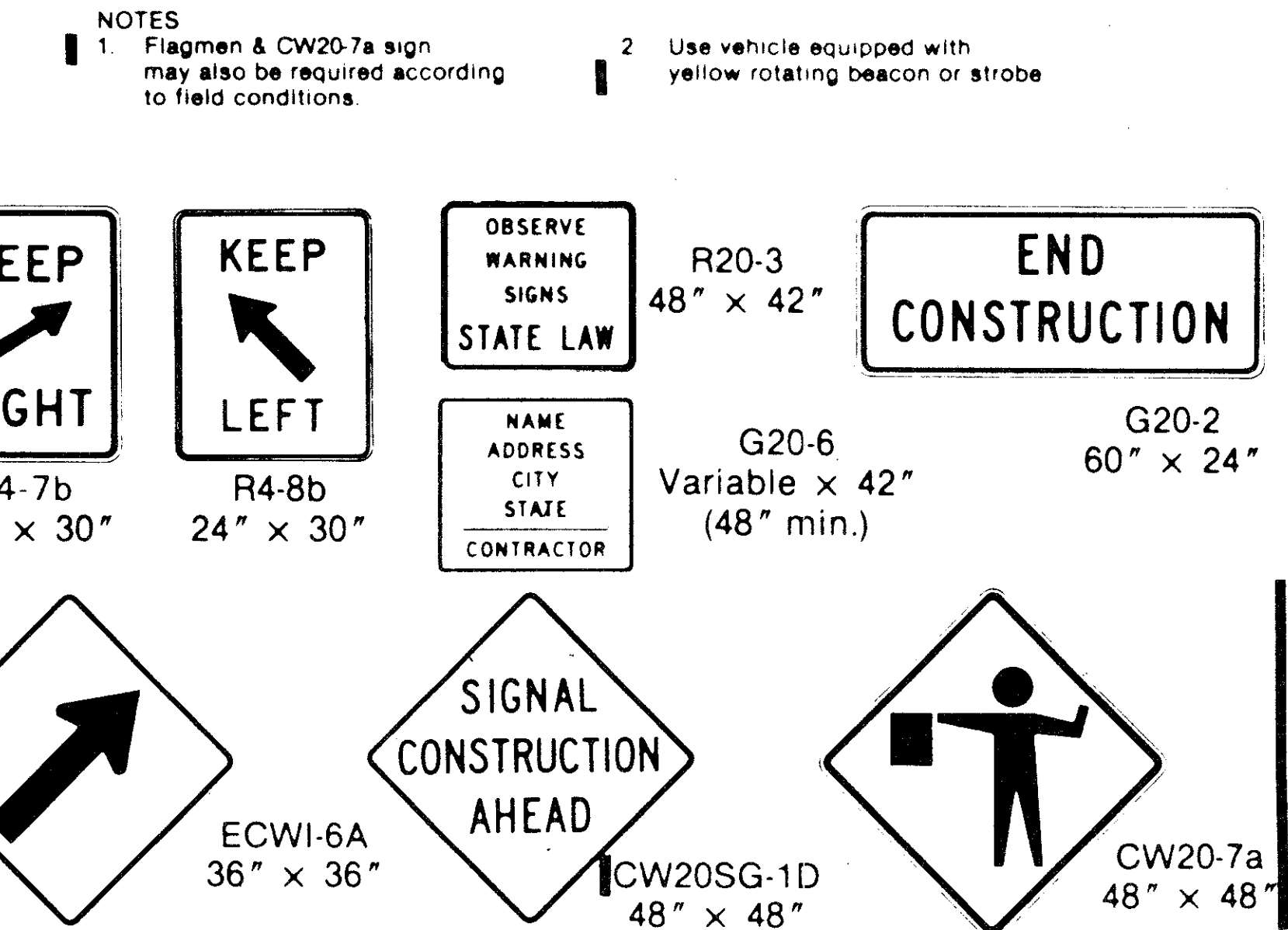
NOTE: For several closely adjoining intersections on the same project, advance signing may not be required in advance of each intersection, but only in advance of the intersections at the project limits. If this is the case, see details elsewhere in the plans for advance signing requirements.

* Distance varies with speed of traffic. Distance can be less than shown in urban areas.

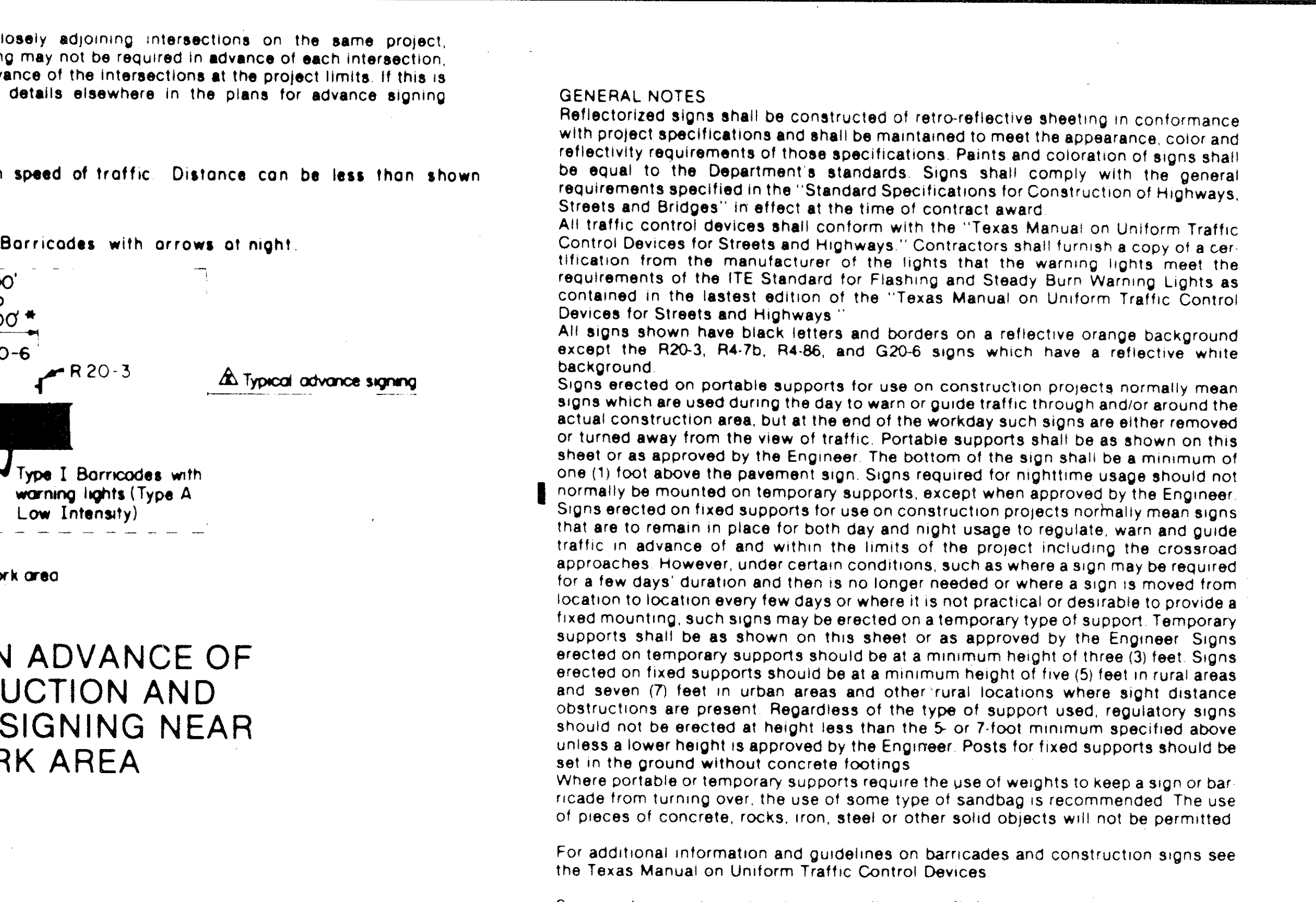
** Change to Type I Barricades with arrows at night.



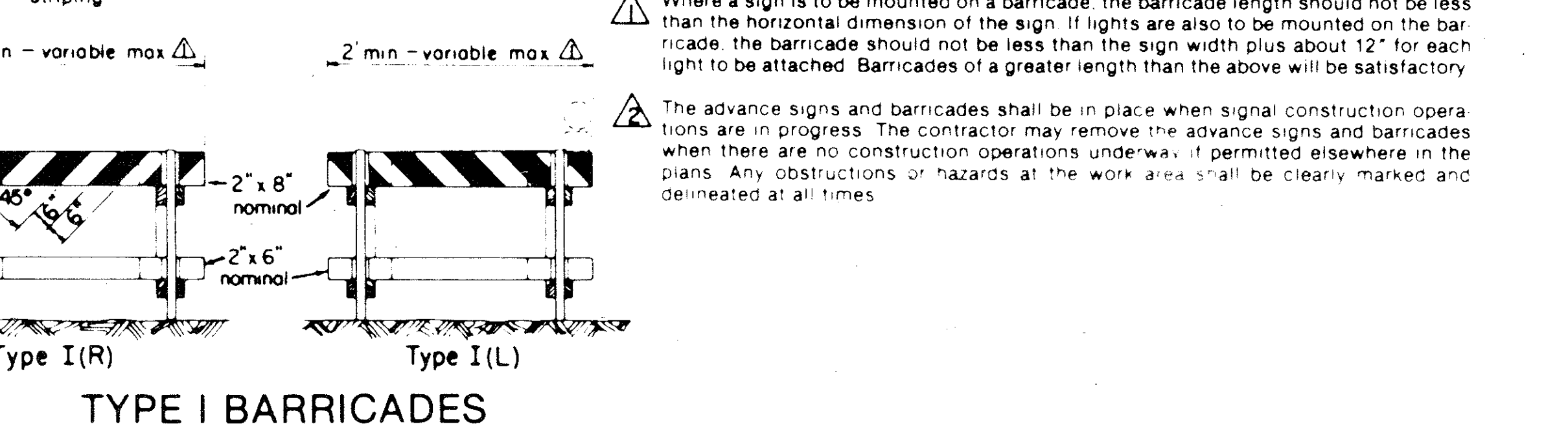
TYPICAL HANGING SIGNAL INSTALLATIONS



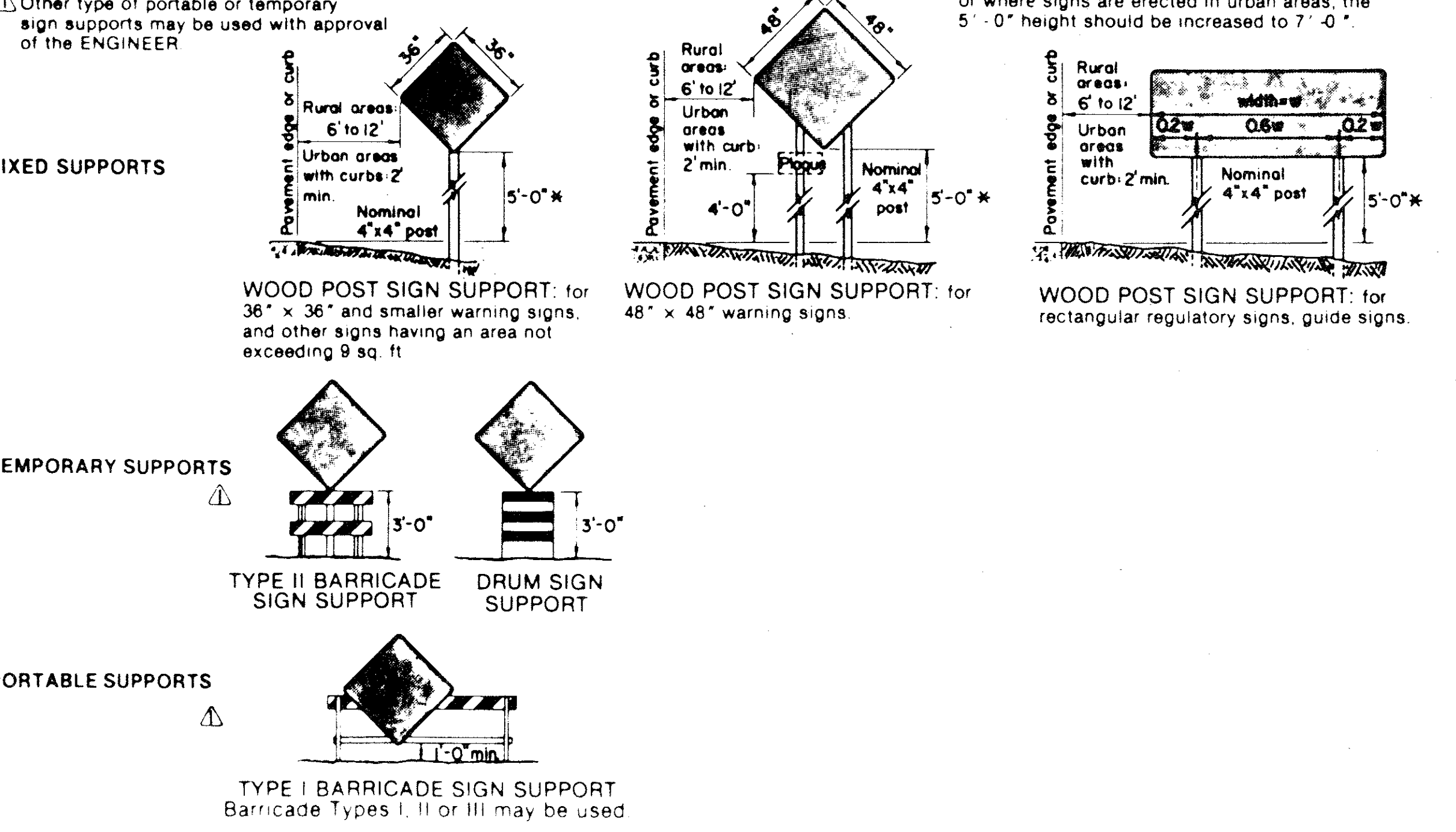
TYPICAL SIGNS USED IN TRAFFIC SIGNAL CONSTRUCTION AREAS



TYPICAL SIGN SUPPORTS



TYPICAL BARRICADES



TYPICAL BARRICADES

DESIGNED BY: _____				BARRICADES, CONSTRUCTION SIGNS AND TYPICAL CONSTRUCTION LAYOUTS FOR TRAFFIC SIGNAL INSTALLATIONS		SHEET NO.
DRAWN BY: _____				MIDWAY ROAD DRAINAGE IMPROVEMENTS GREENHILL DRIVE TO TU RIGHT-OF-WAY		OF SHEETS
CHECKED BY: _____				for		JOB NO. 16285
SCALE: _____				THE TOWN OF ADDISON		
DATE: _____						
NO.	REVISION	BY	DATE	FILE:		