

# ADDISON TEXAS

## SEWER SYSTEM IMPROVEMENTS

MIDWAY ROAD EXTENSION

MAYOR

WM C. COOK JR

COUNCIL

A.E. MARCY

R.R. ROSS

J.B. ALLEN

F. CROWDER

G. McCUTCHIN

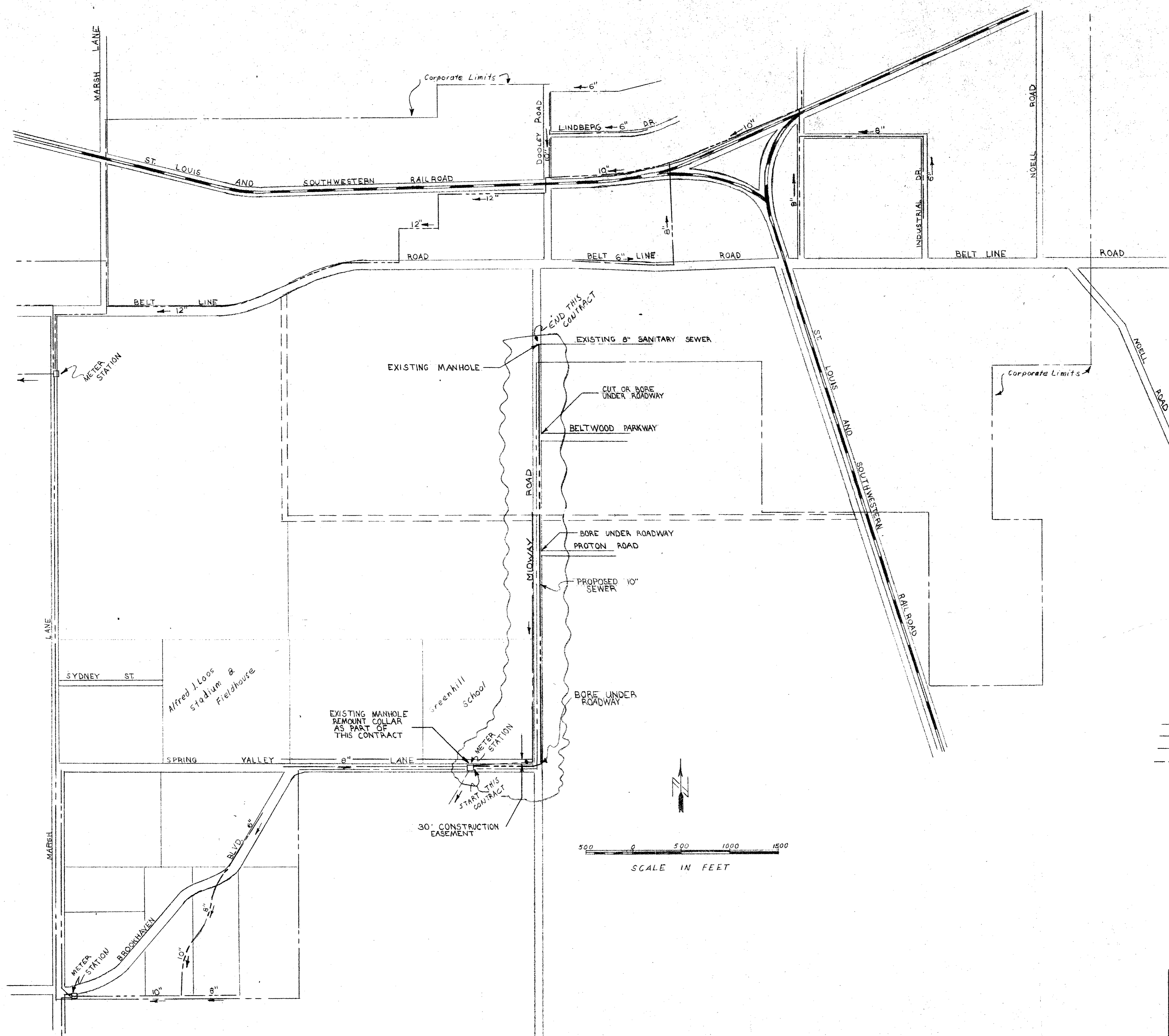
CITY ADMINISTRATOR

CHARLES HOWARD

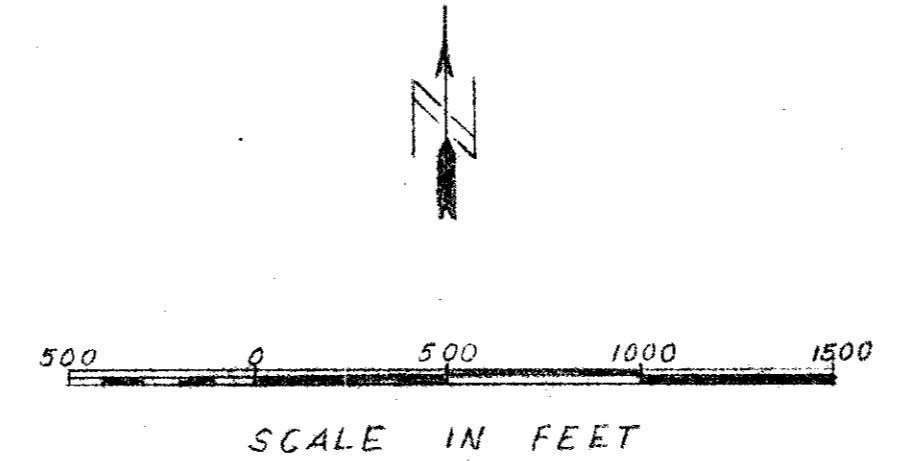
CONSULTING ENGINEERS

GINN & STACY, INC 73  
DALLAS, TEXAS

4  
~~7~~



- LEGEND**
- PORTION TO BE BID
  - 6" SANITARY SEWER
  - 8" SANITARY SEWER - CORPORATE LIMITS
  - 10" SANITARY SEWER
  - 12" SANITARY SEWER

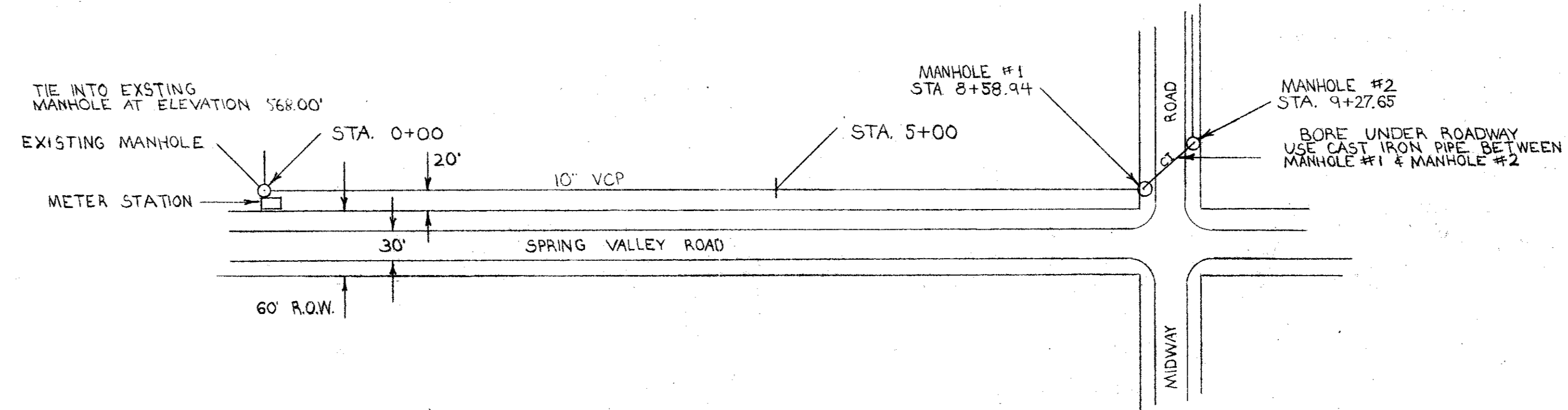


CITY OF ADDISON, TEXAS						
SEWER SYSTEM						
MIDWAY ROAD EXTENSION						
GINN & STACY, INC						
DESIGN	DRAWN	DATE	SCALE	REV'D	FILE	PAGE
JOS	JJ	12-73	1"=500'			1 of 4

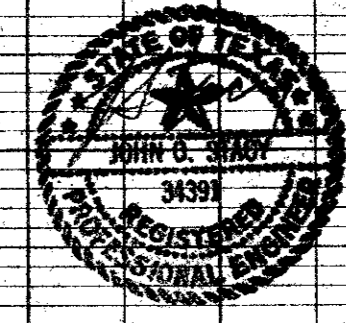
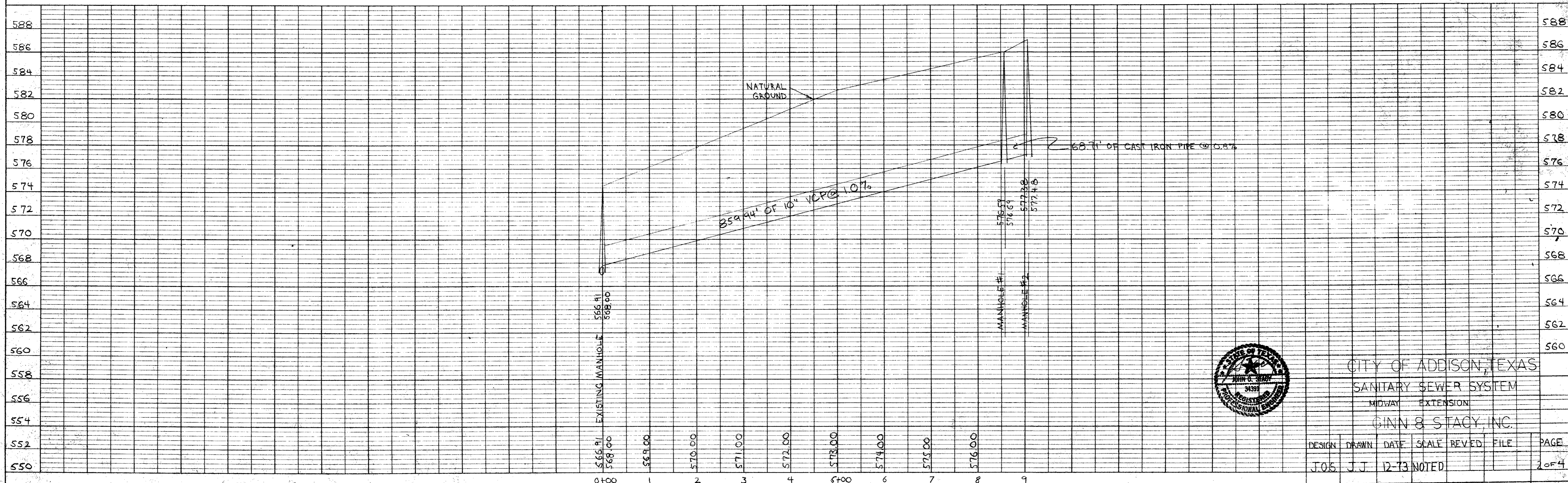


DATE	
BY	
REVISIONS	
NO.	
PLAN	
NOTE BOOK	
No.	

DATE	
BY	
REVISIONS	
NO.	
PROFILE	
NOTE BOOK	
No.	



SCALE  
HORIZONTAL 1"=100'  
VERTICAL 1"=4'



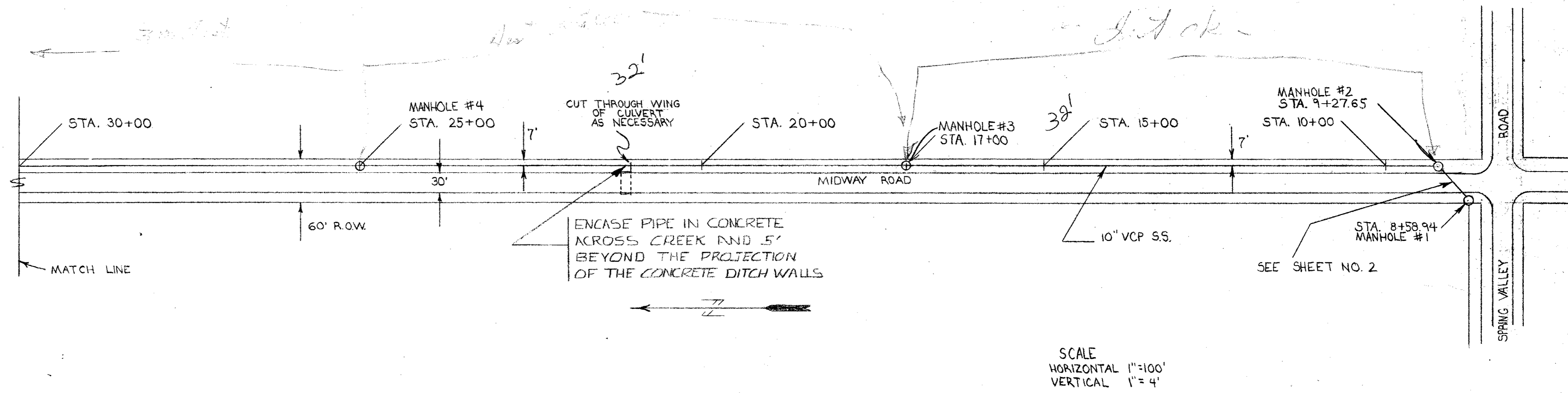
CITY OF ADDISON, TEXAS  
SANITARY SEWER SYSTEM  
MIDWAY EXTENSION  
GINN & STACY, INC.

DESIGN	DRAWN	DATE	SCALE	REV'D	FILE	PAGE
JOS	J.J.	12-73	NOTED			2 OF 4

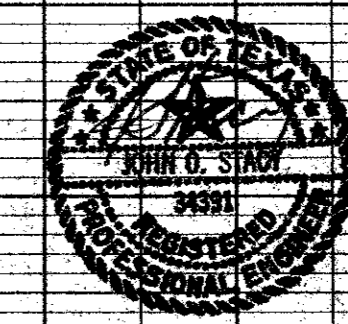
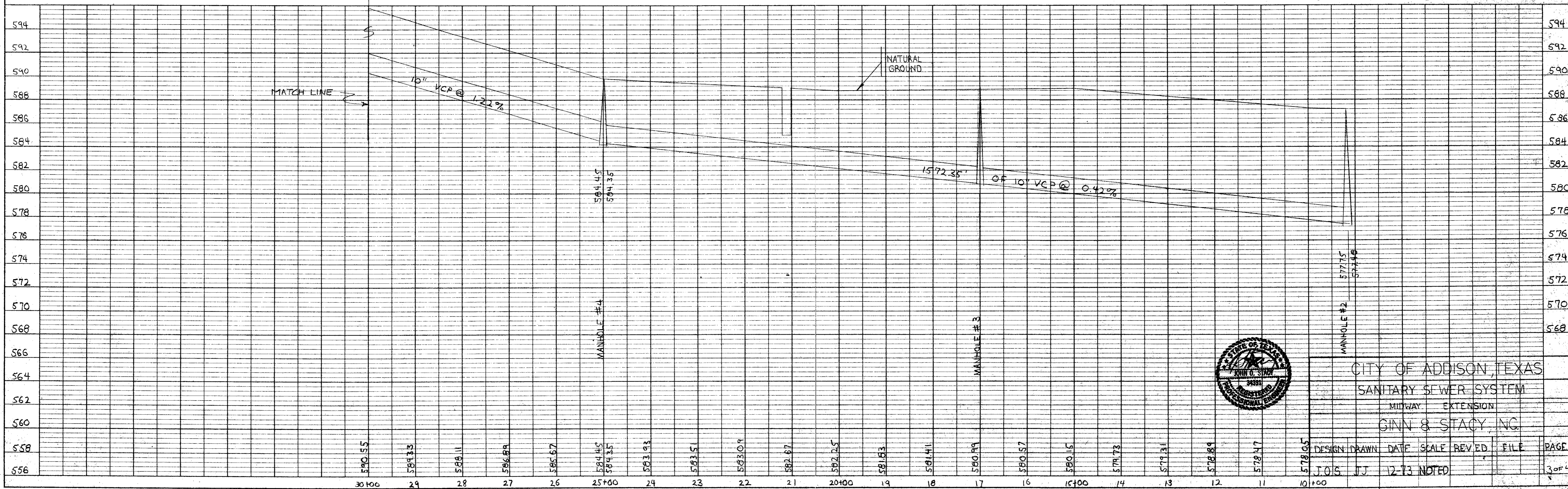


DATE \_\_\_\_\_  
 BY \_\_\_\_\_  
 SURVEYED \_\_\_\_\_  
 PLOTTED \_\_\_\_\_  
 NOTE BOOK \_\_\_\_\_  
 NO. \_\_\_\_\_

DATE \_\_\_\_\_  
 BY \_\_\_\_\_  
 SURVEYED \_\_\_\_\_  
 PLOTTED \_\_\_\_\_  
 NOTE BOOK \_\_\_\_\_  
 NO. \_\_\_\_\_



SCALE  
 HORIZONTAL 1"=100'  
 VERTICAL 1"=4'



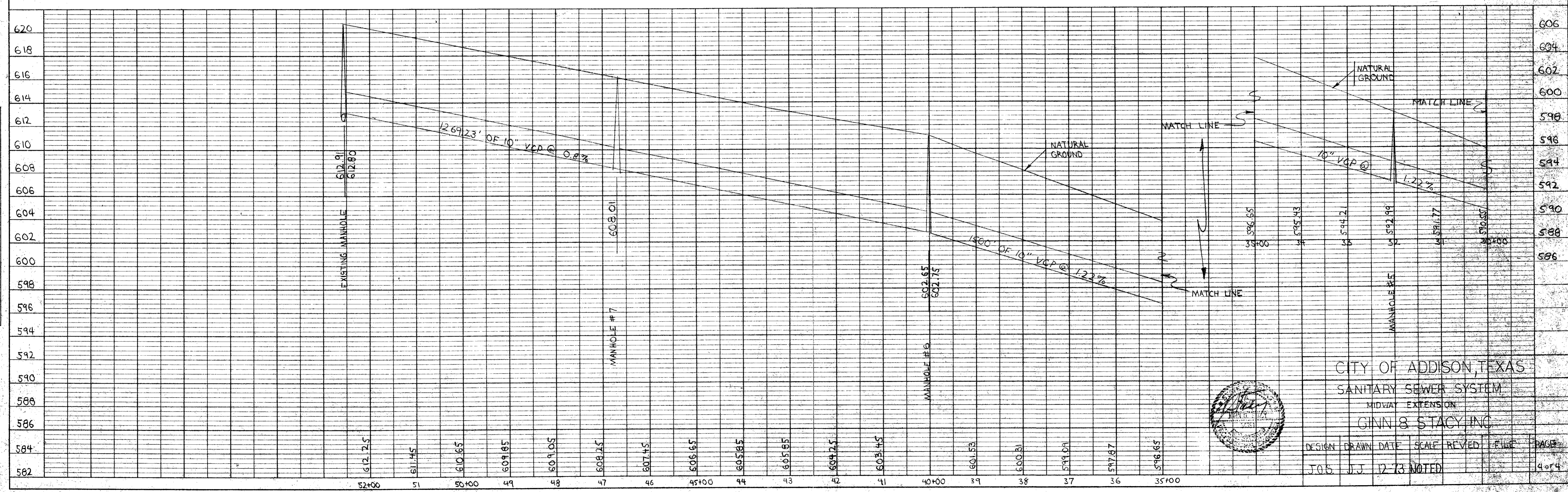
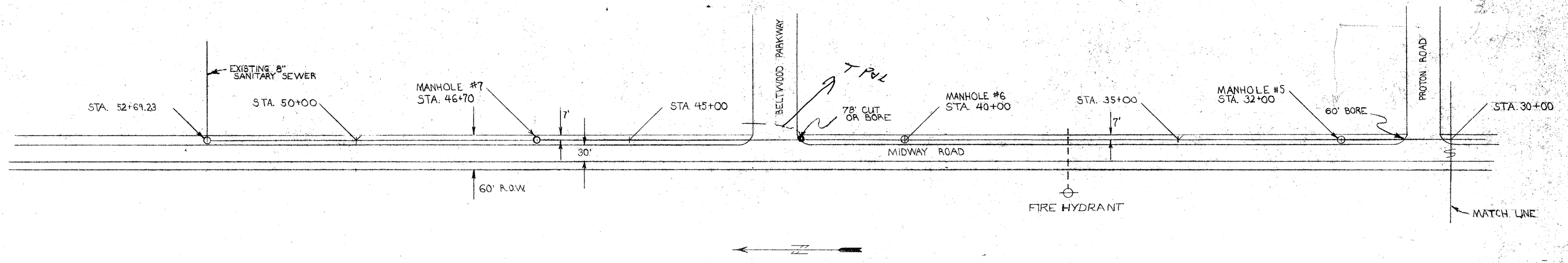
CITY OF ADDISON, TEXAS  
 SANITARY SEWER SYSTEM  
 MIDWAY EXTENSION  
 GINN & STACY, INC.

DESIGN	DRAWN	DATE	SCALE	REV. ED.	FILE	PAGE
J.O.S.	J.J.	12-73	NOTED			3 of 4



DATE: \_\_\_\_\_  
 BY: \_\_\_\_\_  
 CHECKED: \_\_\_\_\_  
 DATE: \_\_\_\_\_  
 BY: \_\_\_\_\_  
 CHECKED: \_\_\_\_\_  
 DATE: \_\_\_\_\_  
 BY: \_\_\_\_\_  
 CHECKED: \_\_\_\_\_

DATE: \_\_\_\_\_  
 BY: \_\_\_\_\_  
 CHECKED: \_\_\_\_\_  
 DATE: \_\_\_\_\_  
 BY: \_\_\_\_\_  
 CHECKED: \_\_\_\_\_



CITY OF ADDISON, TEXAS  
 SANITARY SEWER SYSTEM  
 MIDWAY EXTENSION  
 GINN & STACY, INC.  
 DESIGN: J.O.S. DRAWN: J.J. DATE: 12-73 NOTED: \_\_\_\_\_  
 SCALE: \_\_\_\_\_ REVISED: \_\_\_\_\_ FILE: \_\_\_\_\_ PAGE: 4 of 4