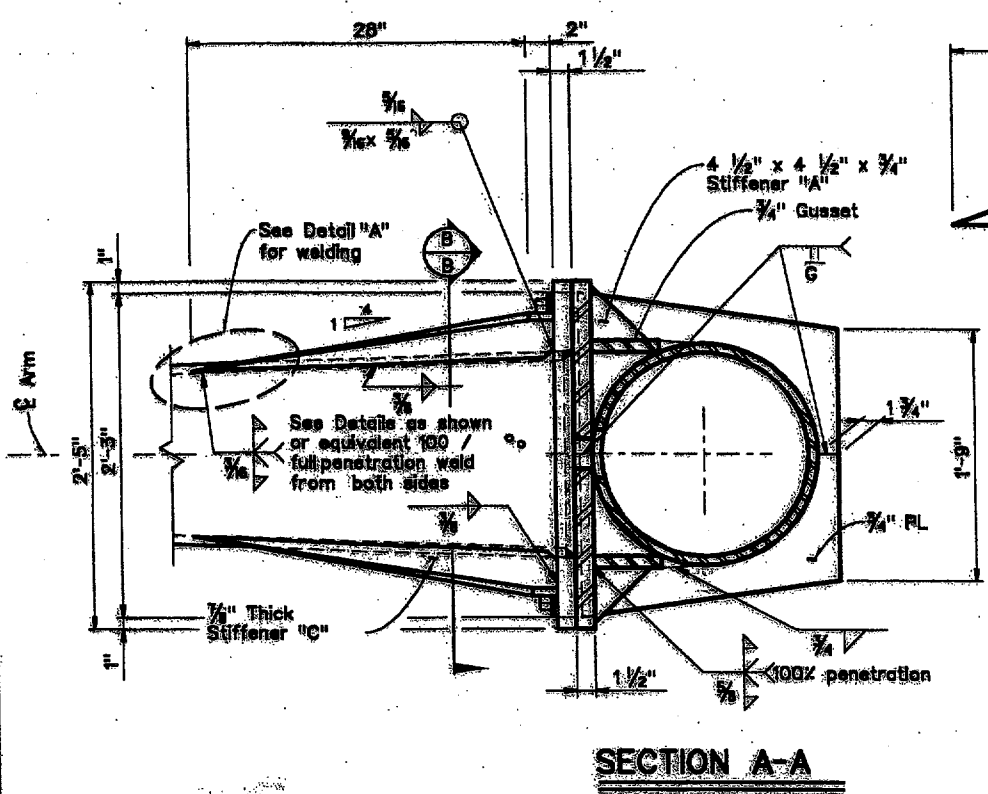


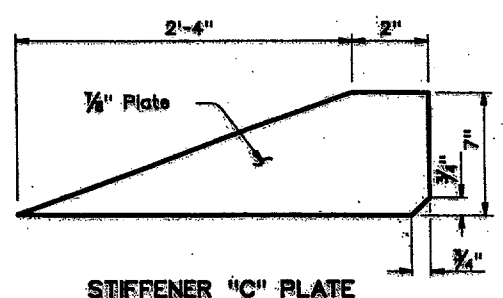
This drawing is governed by the "Texas Engineering Practice Act". No warranty of any kind is made by the State of Texas for any purpose whatsoever, including but not limited to, the conversion of this drawing to other formats or for incorrect results or damages resulting from its use.

MATERIALS	
Round Shafts or Polygonal Shafts	ASTM A595 GR A, ASTM A570 GR 50, ASTM A807 GR 50, ASTM A572 GR 50 or A38M50
Plates	ASTM A36 OR A572 GR 50 or A595 ⁽¹⁾ or A36M50
Connection Bolts	ASTM A325 except where noted
Pin Bolts	ASTM A325
Pipe	ASTM A53 GR A or B, or A501
Misc. Hardware	Galvanized steel or stainless steel or as noted

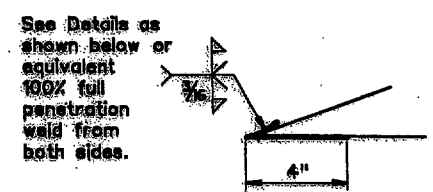
⁽¹⁾ Any of the materials listed for plates may be used where the drawings do not specify a particular Grade designation.
⁽²⁾ If A595 materials are used, it need not be cold worked to A595 requirements, but material must have 40 ksi minimum yield prior to fabrication.



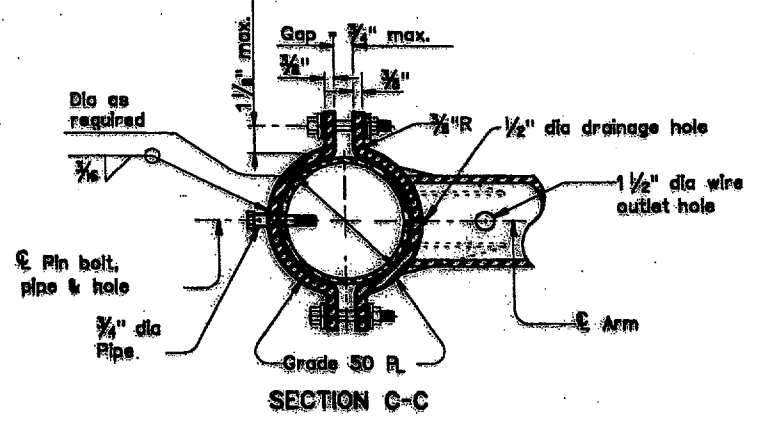
SECTION A-A



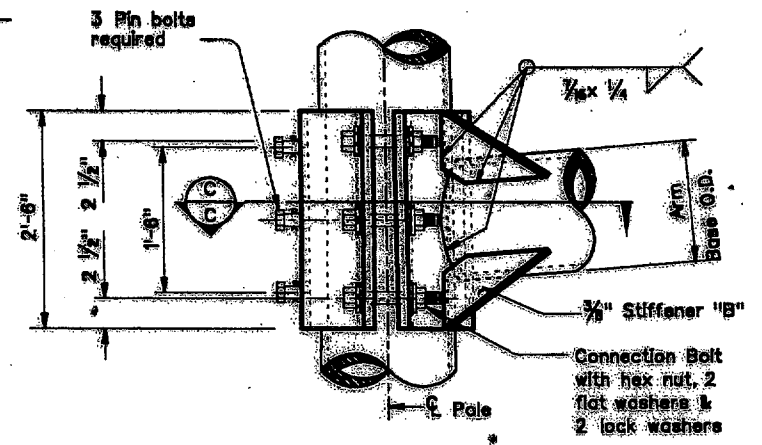
STIFFENER 'C' PLATE



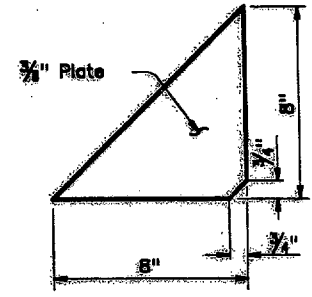
DETAIL 'A'



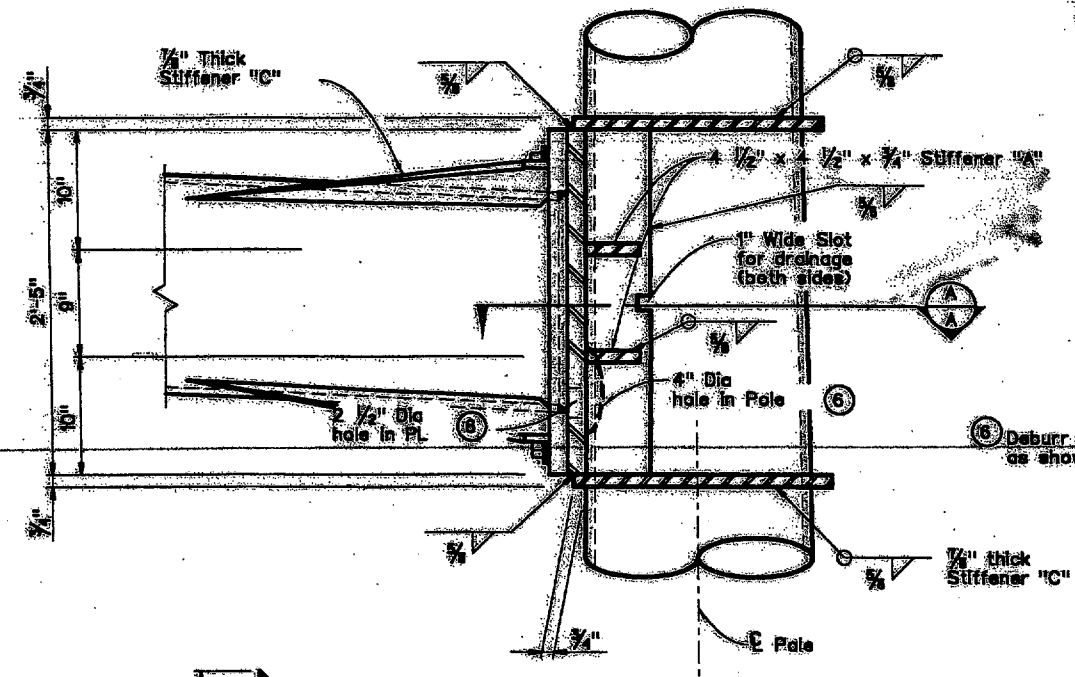
SECTION C-C



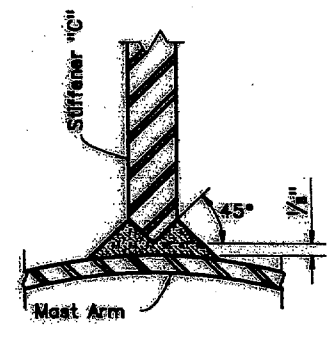
ELEVATION



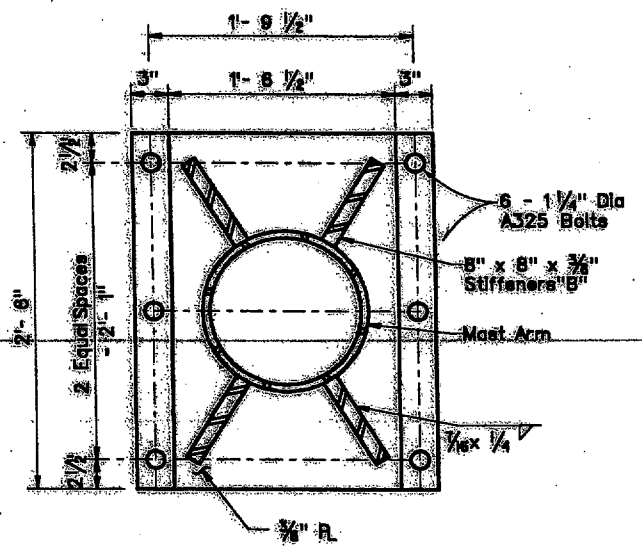
STIFFENER 'B' PLATE



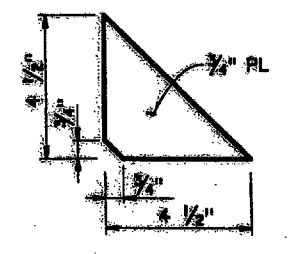
ELEVATION



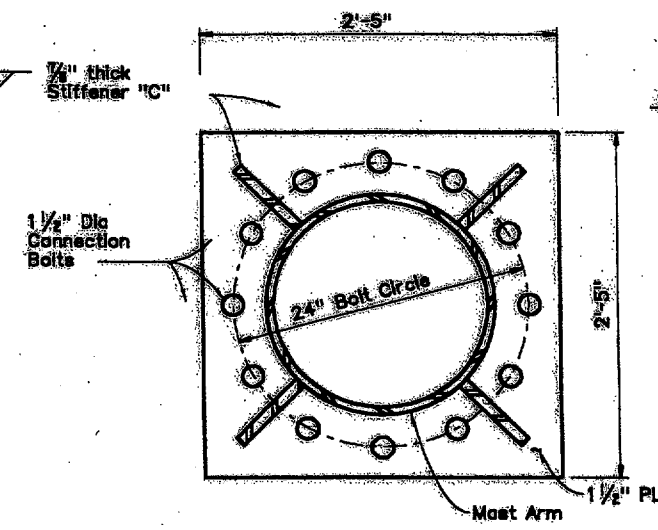
MAST ARM



MAST ARM AND ILSN ARM TO POLE CLAMP-ON DETAIL



STIFFENER 'A' PLATE



SECTION B-B

GENERAL NOTES:
 Clamp-on details are used for the second arm on dual mast arm assemblies. A maximum 1 1/2 inch wide vertical slotted hole may be cut in the front clamp plate to facilitate drainage during galvanizing. The slot shall be centered behind the arm and shall be no longer than the arm diameter minus 1".
 Fixed mount details are used for single mast arm assemblies and for the first arm on dual mast assemblies.
 Where duplicate parts occur on a detail, welds shown for one part shall apply to all similar parts on the detail.
 Pin bolts are required to prevent rotation of clamp-on arms under design wind forces.

STANDARD PLANS
 Texas Department of Transportation
 Traffic Operations Division
TRAFFIC SIGNAL SUPPORT STRUCTURES
LONG MAST ARM ASSEMBLY
 (50 TO 65 FT)
 (80 AND 100 MPH WIND ZONE)
 LMA(3)-01
 Sheet 3 of 4
 12001 July 2000
 4-20-01
 DALLAS 091845344 156
 DALLAS 091845344 156