

PLANS FOR THE CONSTRUCTION OF

MIDWAY ROAD

FROM : SPRING VALLEY ROAD
TO : BELT LINE ROAD

A COOPERATIVE EFFORT OF :

THE CITY OF FARMERS BRANCH, TEXAS
THE CITY OF ADDISON, TEXAS
THE COUNTY OF DALLAS, TEXAS

PLANS PREPARED BY THE
ENGINEERING DIVISION OF THE
PUBLIC WORKS DEPARTMENT OF
THE CITY OF FARMERS BRANCH, TEXAS

SUBMITTED: March 17th, 1978

Richard Lee Almy, PE

CITY OF FARMERS BRANCH

APPROVED: March 24th, 1978

PAUL M. WEST
CITY MANAGER

CITY OF ADDISON

APPROVED: May 25th, 1978

JOHN MILLIGAN
CITY ADMINISTRATOR

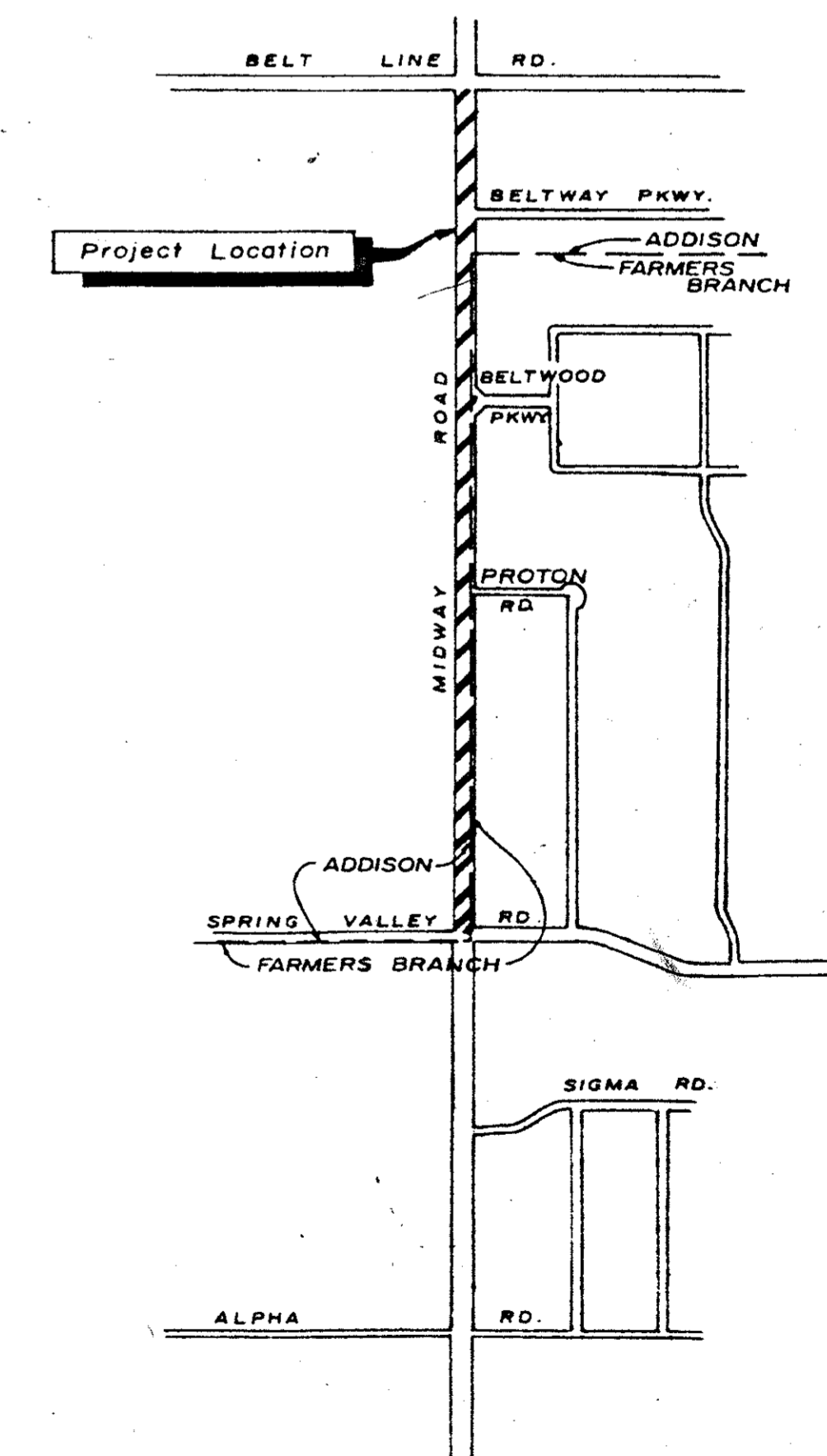
COUNTY OF DALLAS

APPROVED: _____, 1978

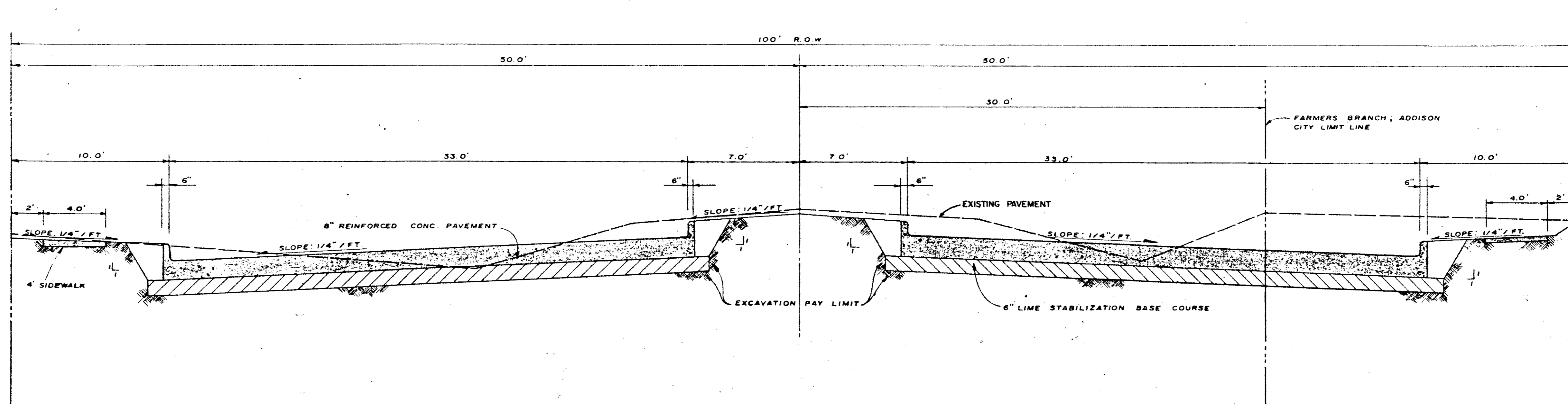
C. JUDSON SHOOK, PE
DIRECTOR OF PUBLIC WORKS

INDEX TO SHEETS

SHEET NO.	DESCRIPTION
1	TITLE SHEET with LOCATION MAP and INDEX to SHEETS
2	TYPICAL STREET SECTION with NOTES
3	STREET PLAN and PROFILE : STA. 51+00 to 56+00
4	" " " : STA. 56+00 to 61+00
5	STREET PLAN and PROFILE : STA. 61+00 to 66+00
6	" " " : STA. 66+00 to 71+00
7	STREET PLAN and PROFILE : STA. 71+00 to 76+00
8	" " " : STA. 76+00 to 81+00
9	STREET PLAN and PROFILE : STA. 81+00 to 86+00
10	" " " : STA. 86+00 to 91+00
11	STREET PLAN and PROFILE : STA. 91+00 to 96+00
12	" " " : STA. 96+00 to 101+00
13	STREET PLAN and PROFILE : STA. 101+00 to END of PROJECT
14	STORM SEWER PROFILE
15	" " "
16	STORM SEWER PROFILE
17	CONSTRUCTION PAVING DETAILS
18	" " "
19	CURB INLET DETAILS
20	UTILITY DETAILS : WATER
21	" " : SANITARY SEWER
22	SPECIAL DETAILS



LOCATION MAP



TYPICAL PAVEMENT SECTION

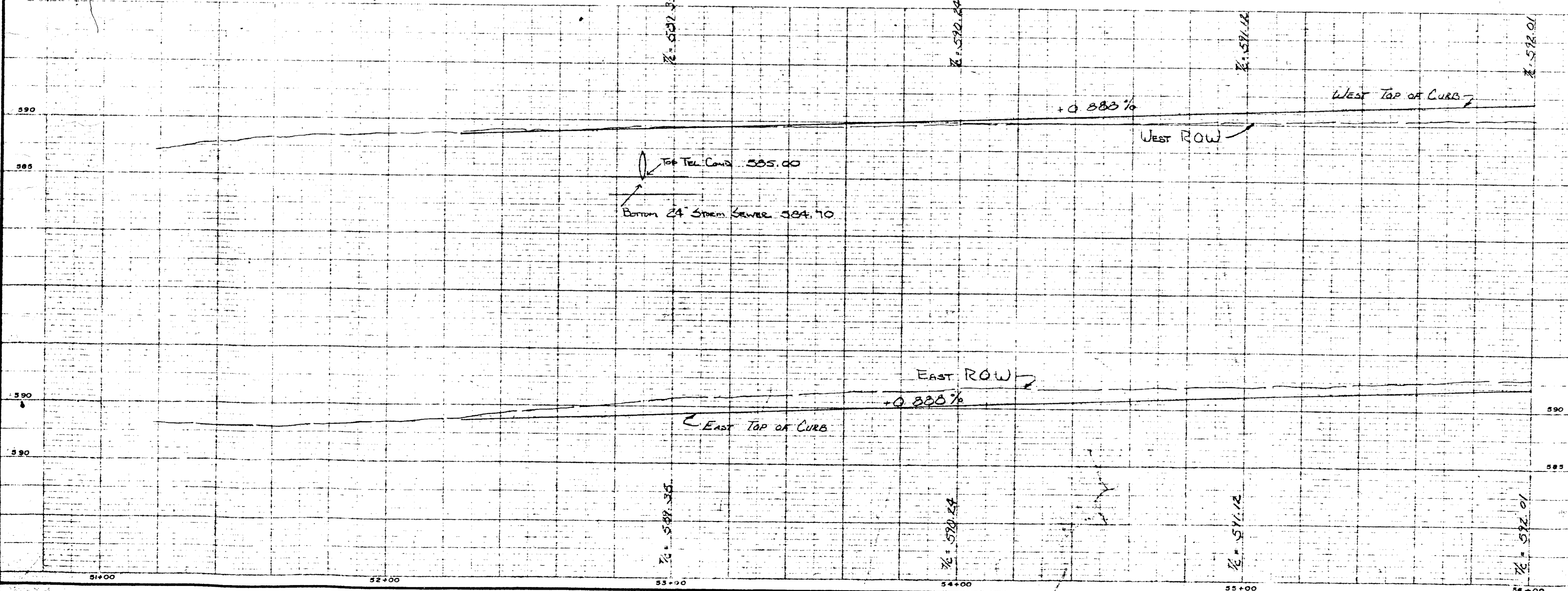
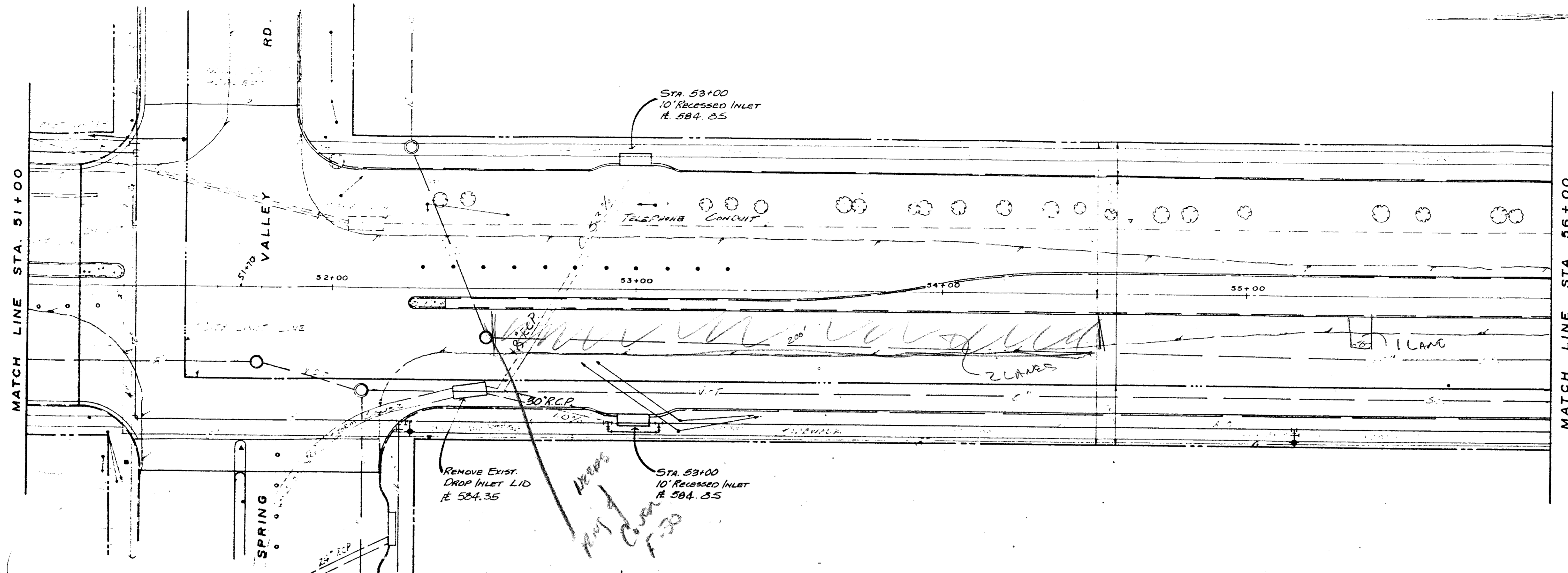
Scale: 1"=40' HORIZ; 1"=2' VERT.

GENERAL NOTES:

1. SIDEWALKS TO BE CONSTRUCTED WHERE NEEDED.
2. ADDITIONAL ITEMS CONSIDERED AS PART OF THIS PROJECT INCLUDE A SPRINKLER SYSTEM FOR THE MEDIAN AND RIGHT-OF-WAY, A SYSTEM OF STREET LIGHTS TO BE LOCATED IN THE MEDIAN AND A NEW TRAFFIC SIGNAL SYSTEM AT THE INTERSECTION OF MIDWAY ROAD AND SPRING VALLEY ROAD. PLANS FOR THESE ITEMS WILL BE FURNISHED IN THE FUTURE. PVC CONDUIT STUD-OUTS WILL BE PROVIDED WHERE NEEDED TO FACILITATE THE INSTALLATION OF THESE SYSTEMS.
3. ALL CONSTRUCTION SHALL CONFORM TO THE STANDARD SPECIFICATIONS OF THE CITY OF FARMERS BRANCH.

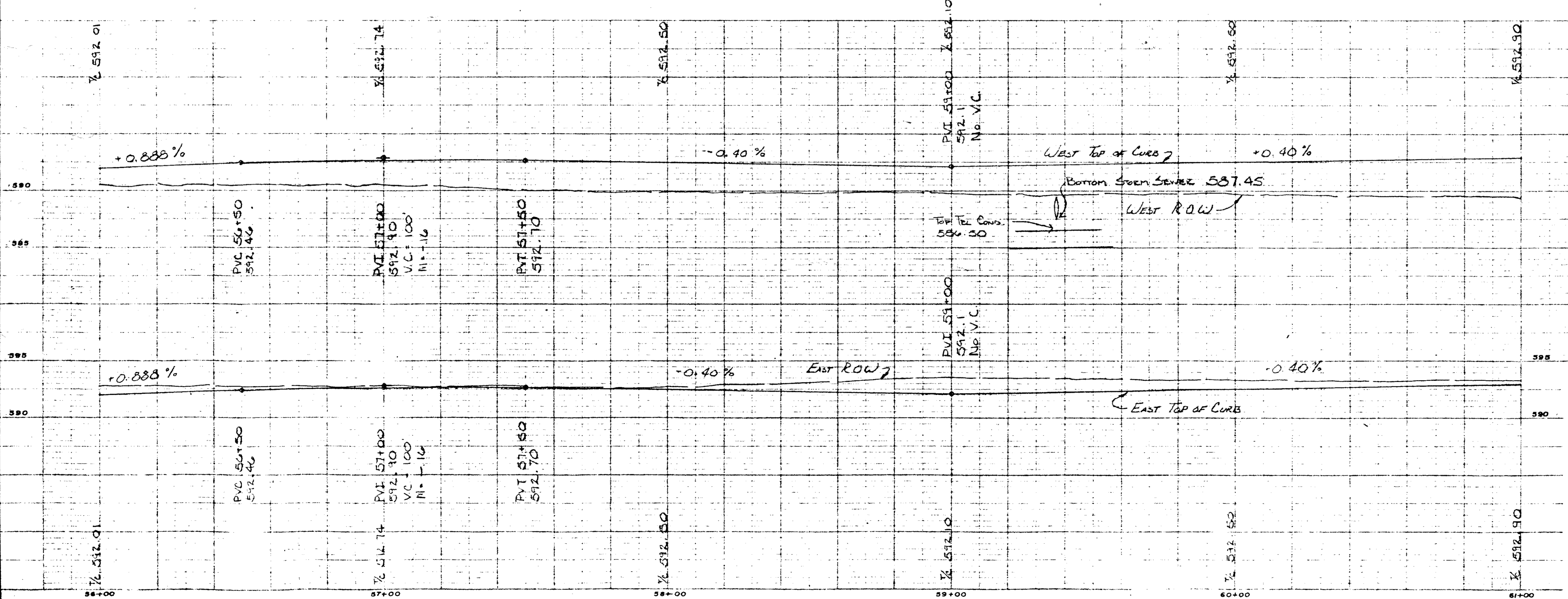
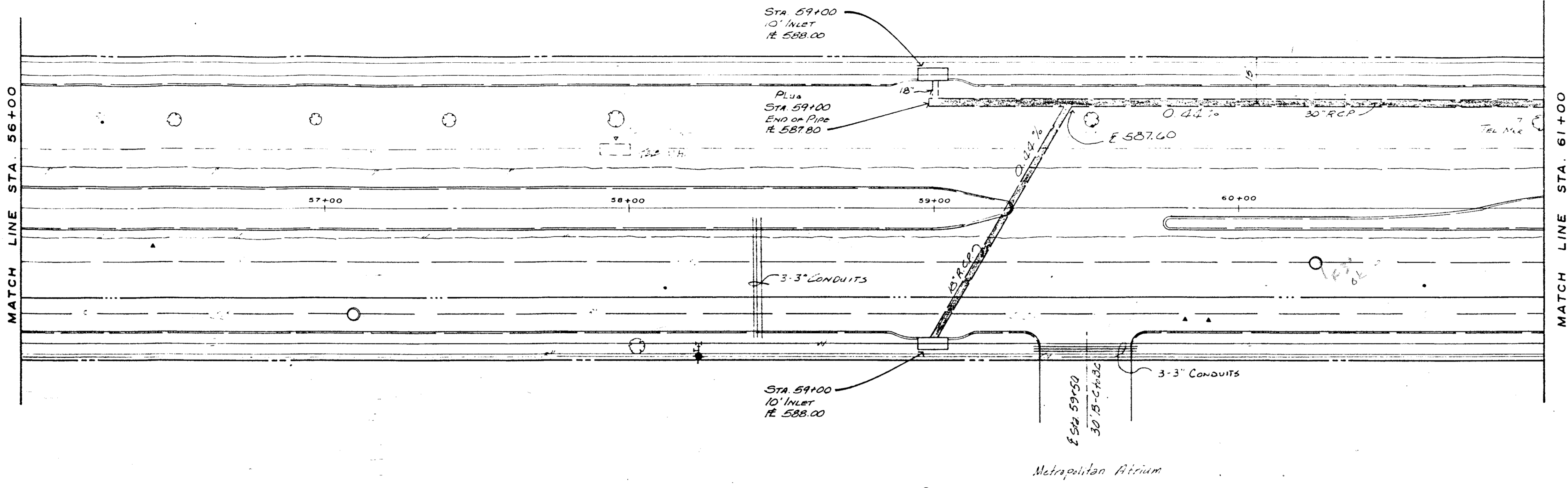
NO.	REVISION	BY	DATE
CITY OF FARMERS BRANCH, TEXAS PUBLIC WORKS DEPARTMENT ENGINEERING DIVISION			
MIDWAY ROAD PAVING SPRING VALLEY RD TO BELT LINE RD			
DRAWN BY: D.D.		APPROVED BY:	
DESIGNED BY: J.P.		DATE: 3-78	
PROJECT NO.	SCALE: 1"=20' H. / 1"=5' V.	SHEET 2 OF 2	

N



NO.	REVISION	BY	DATE
CITY OF FARMERS BRANCH, TEXAS PUBLIC WORKS DEPARTMENT ENGINEERING DIVISION			
MIDWAY ROAD PAVING SPRING VALLEY RD. TO BELT LINE RD.			
DRAWN BY D. D.		APPROVED BY T. P.	
DESIGNED BY J. P.		DATE 3-78	
PROJECT NO.	SCALE: H. 1" = 20' V. 1" = 5'	SHEET 3 OF	

F 284 PD



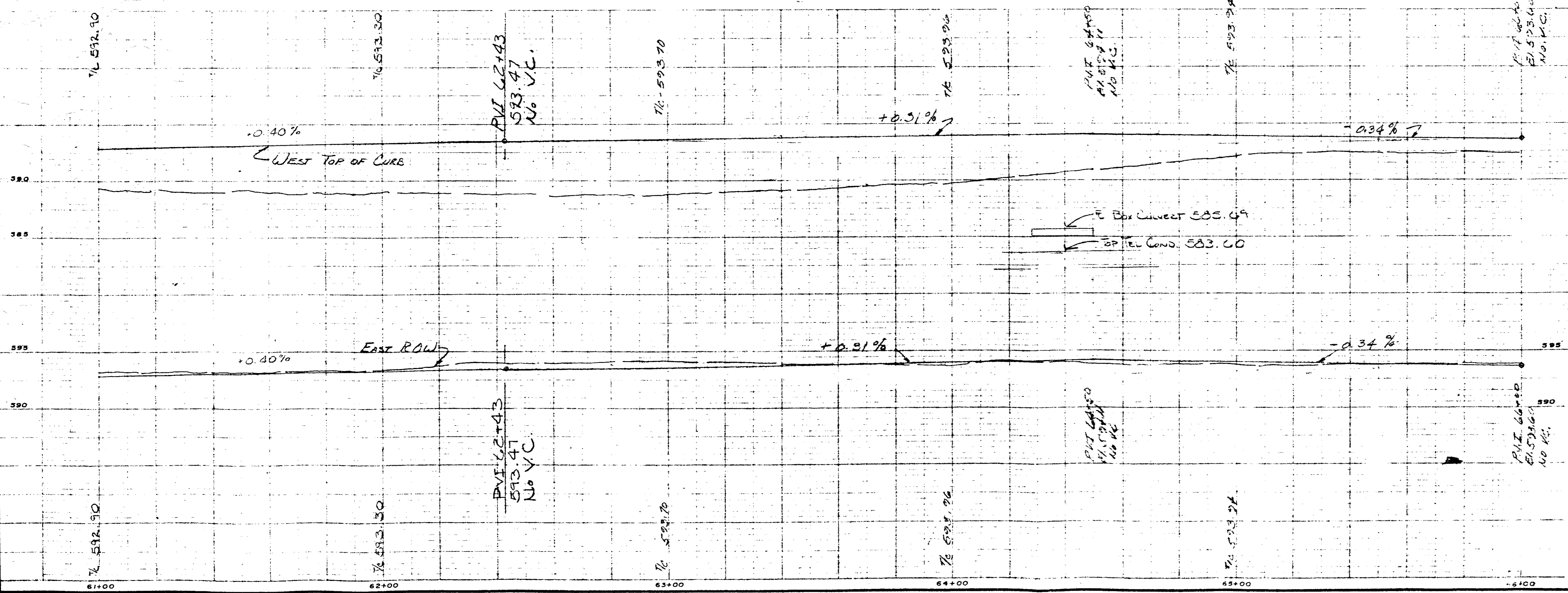
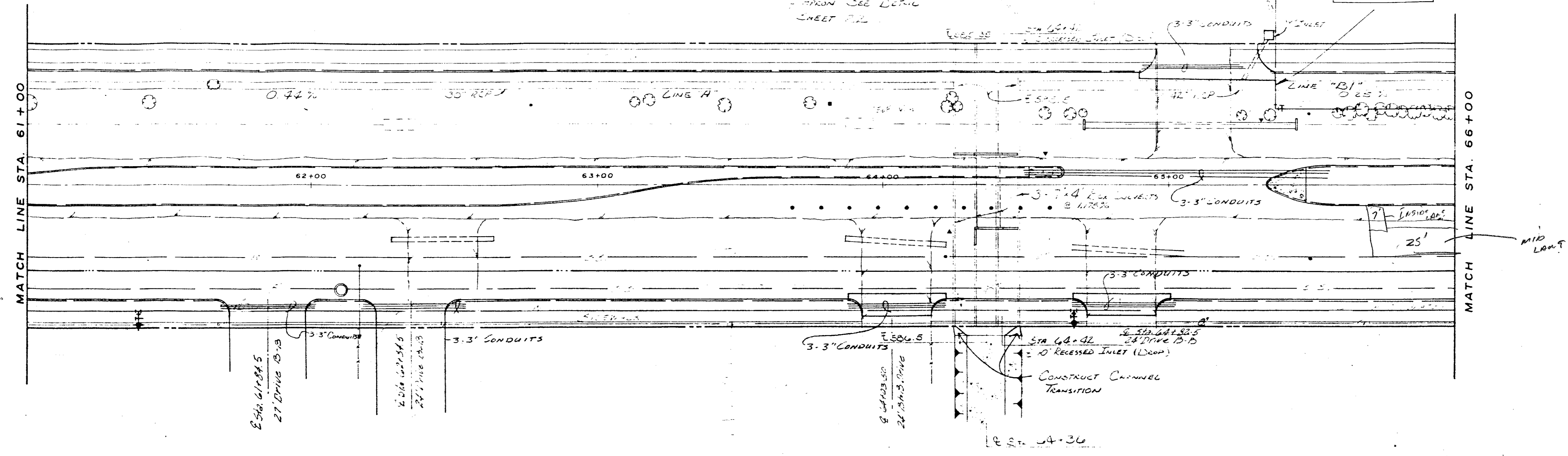
NO.	REVISION	BY	DATE
CITY OF FARMERS BRANCH, TEXAS PUBLIC WORKS DEPARTMENT ENGINEERING DIVISION			
MIDWAY ROAD PAVING SPRING VALLEY RD. TO BELT LINE			
DESIGNED BY	J.P.	APPROVED BY	T.
PROJECT NO.		DATE	3-78
SCALE	H. 1" = 20' V. 1" = 5'	SHEET	4 OF 4

TO AND DRAINAGE SEGMENT

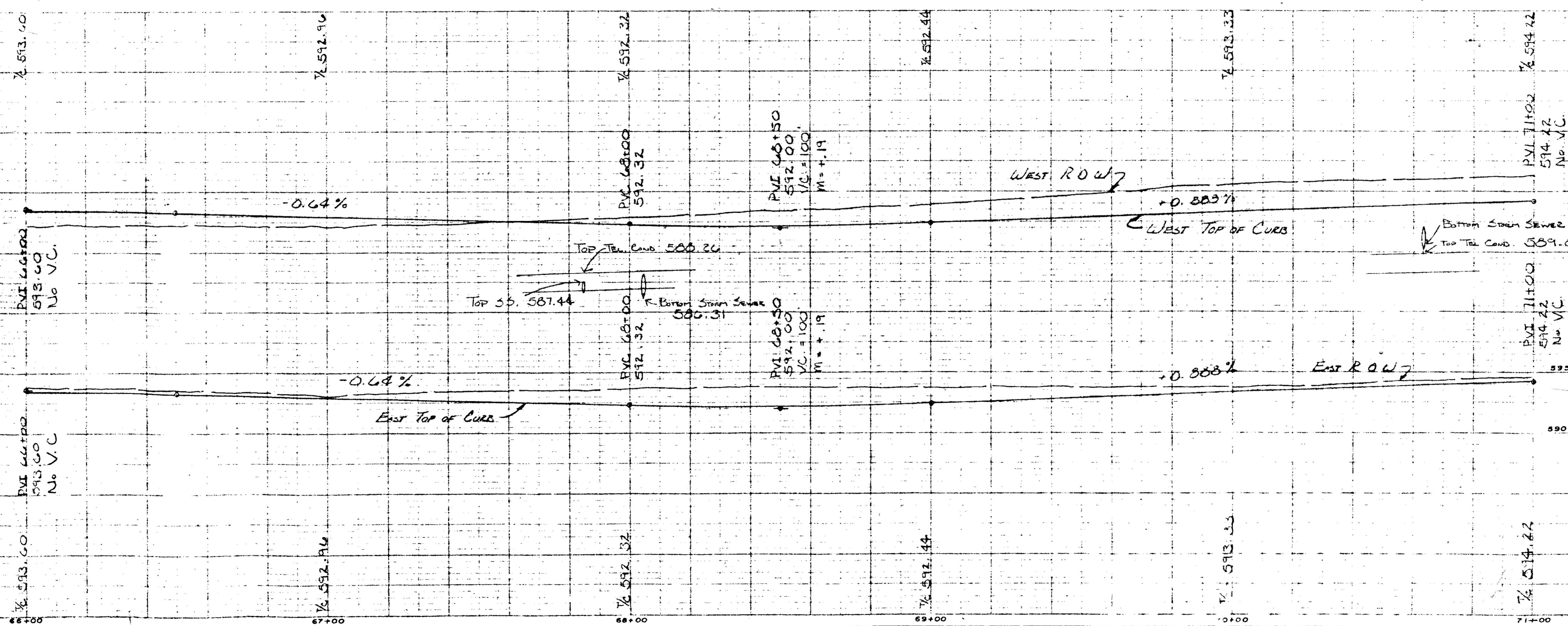
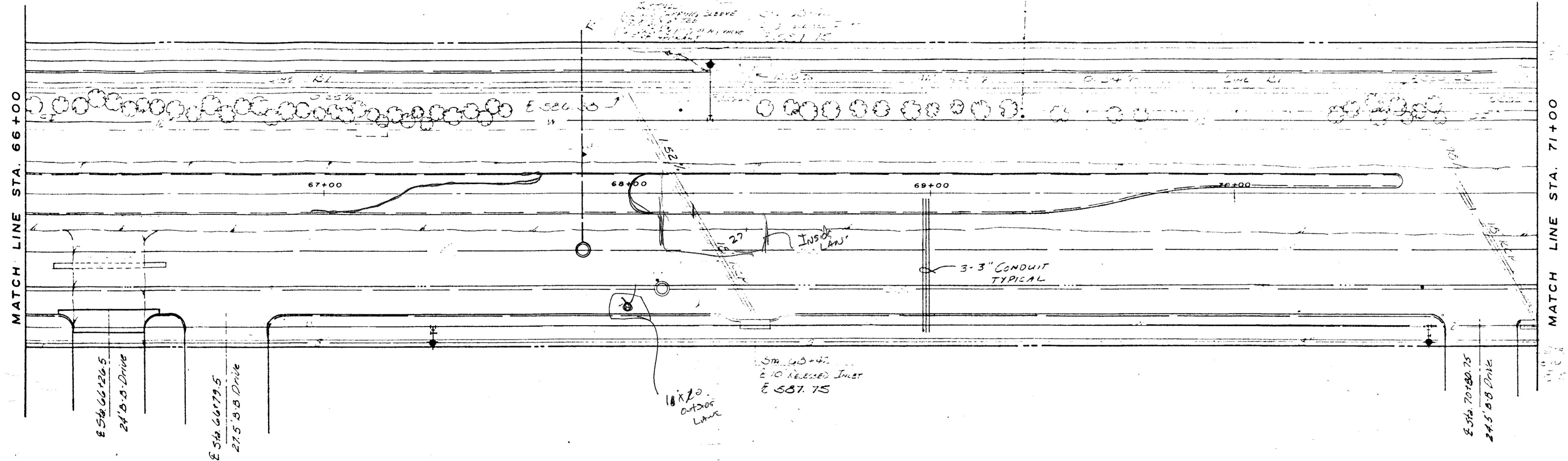
N

LOWERED WATER
LINE UNDER STORM
SEWER 4-45° BENDS

WATER TURNING WALL
- FROM SEE DETAIL
SHEET P.L.



CHANGE - 1/2\"/>			
NO.	REVISION	BY	DATE
CITY OF FARMERS BRANCH, TEXAS PUBLIC WORKS DEPARTMENT ENGINEERING DIVISION			
MIDWAY ROAD PAVING SPRING VALLEY RD. TO BELT LINE RD.			
DRAWN BY	D. D.	APPROVED BY	
DESIGNED BY	J. P.	DATE	3-78
PROJECT NO.	SCALE	H. 1" = 20' V. 1" = 5'	SHEET 5 OF

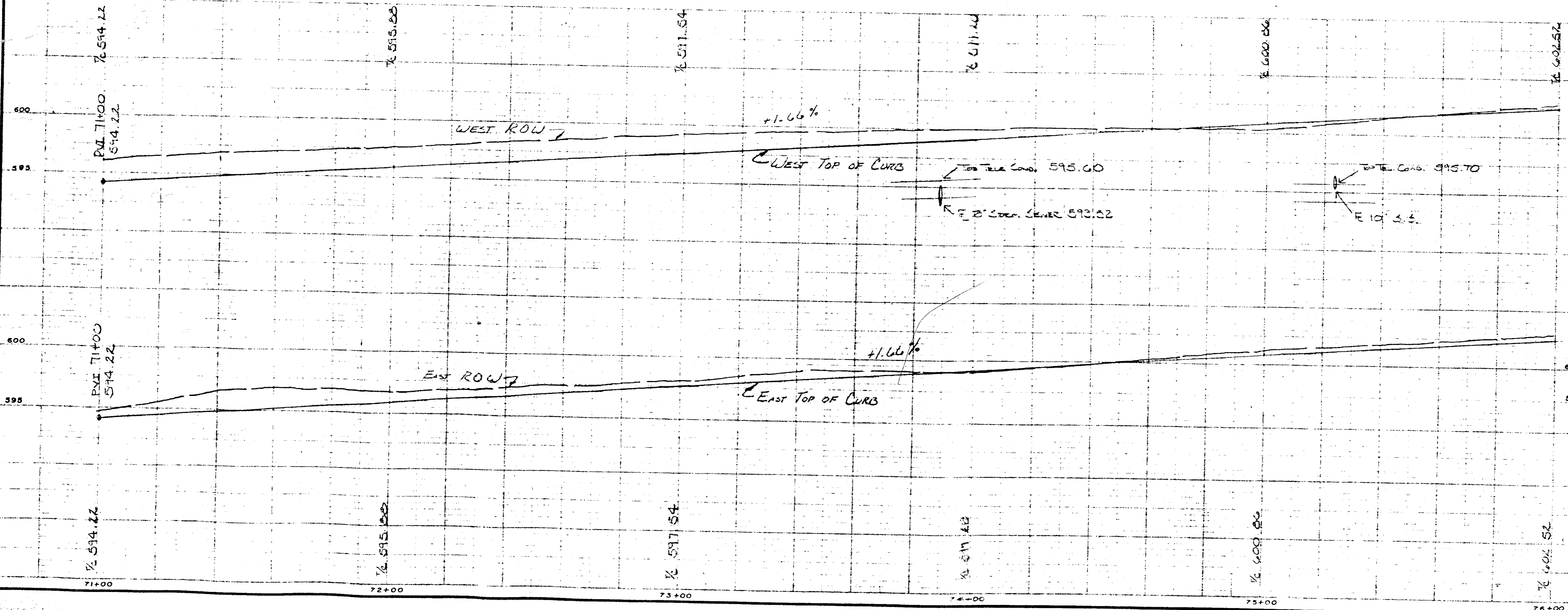
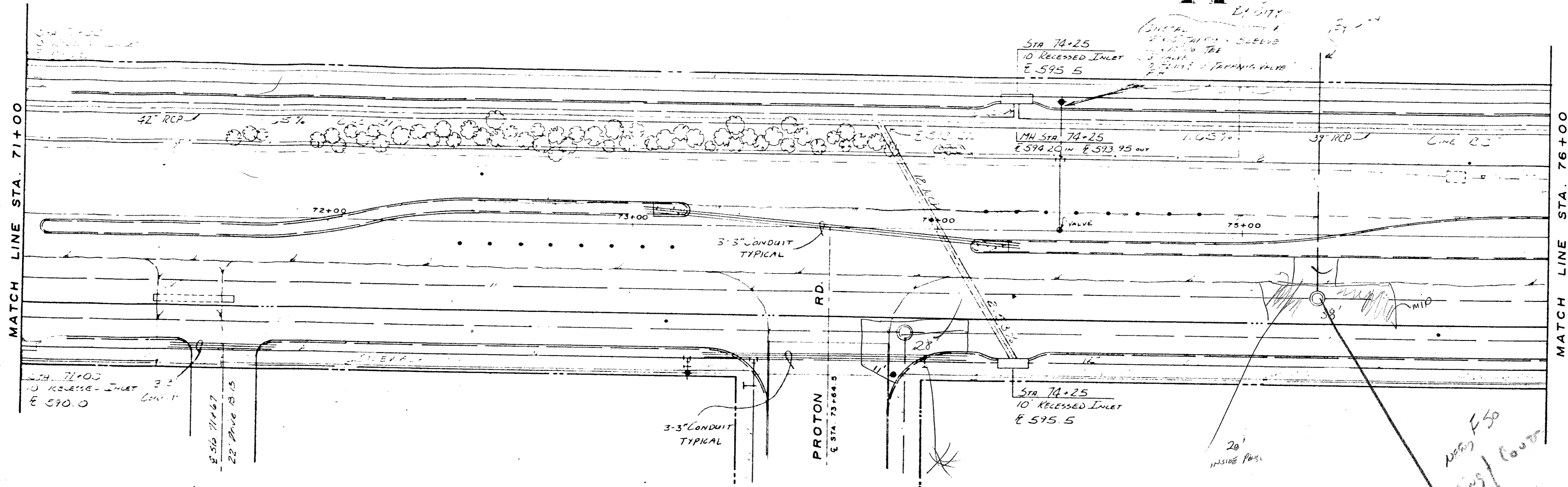


NO.	REVISION	BY	DATE

CITY OF FARMERS BRANCH, TEXAS
 PUBLIC WORKS DEPARTMENT
 ENGINEERING DIVISION

MIDWAY ROAD PAVING
 SPRING VALLEY RD. TO BELT LINE RD.

DRAWN BY: D.D. APPROVED BY: _____
 DESIGNED BY: J.P. DATE: 5-78
 PROJECT NO. SCALE: H. 1"=20' SHEET 6 OF 6



NO.	REVISION	BY	DATE

CITY OF FARMERS BRANCH, TEXAS
PUBLIC WORKS DEPARTMENT
ENGINEERING DIVISION

MIDWAY ROAD PAVING
SPRING VALLEY RD. TO BELT LINE RD.

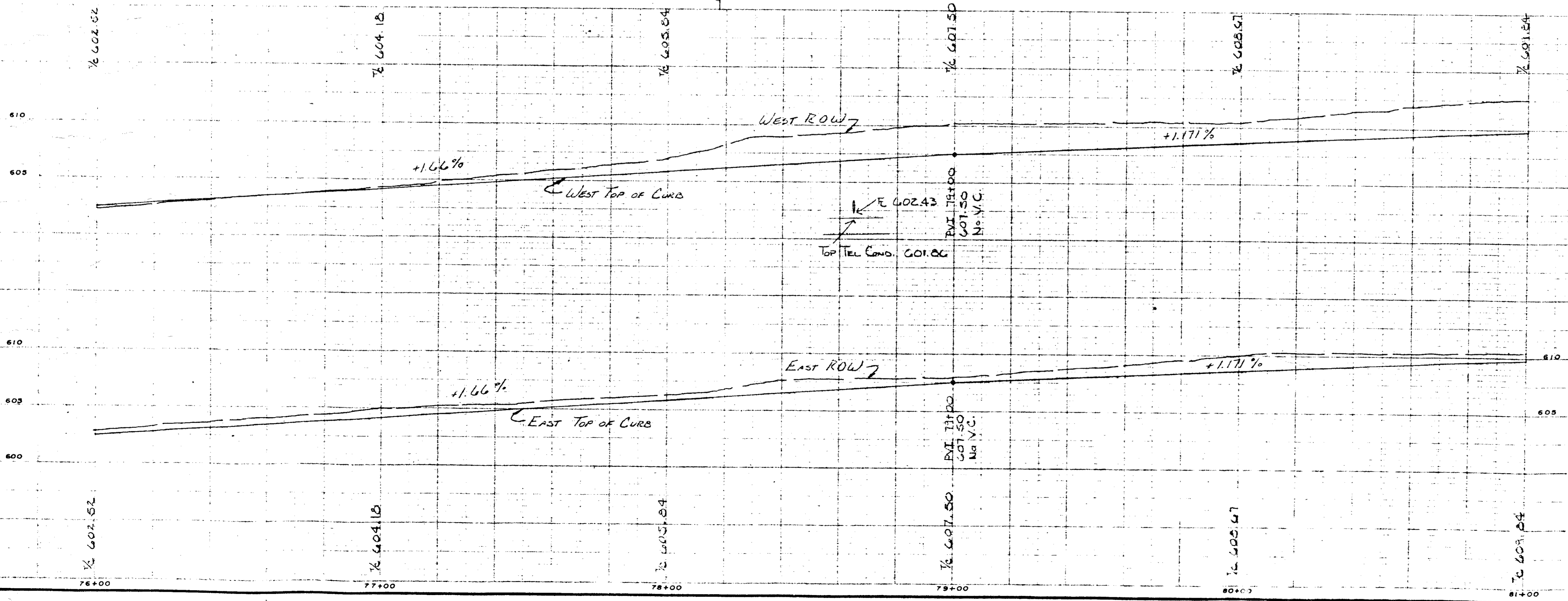
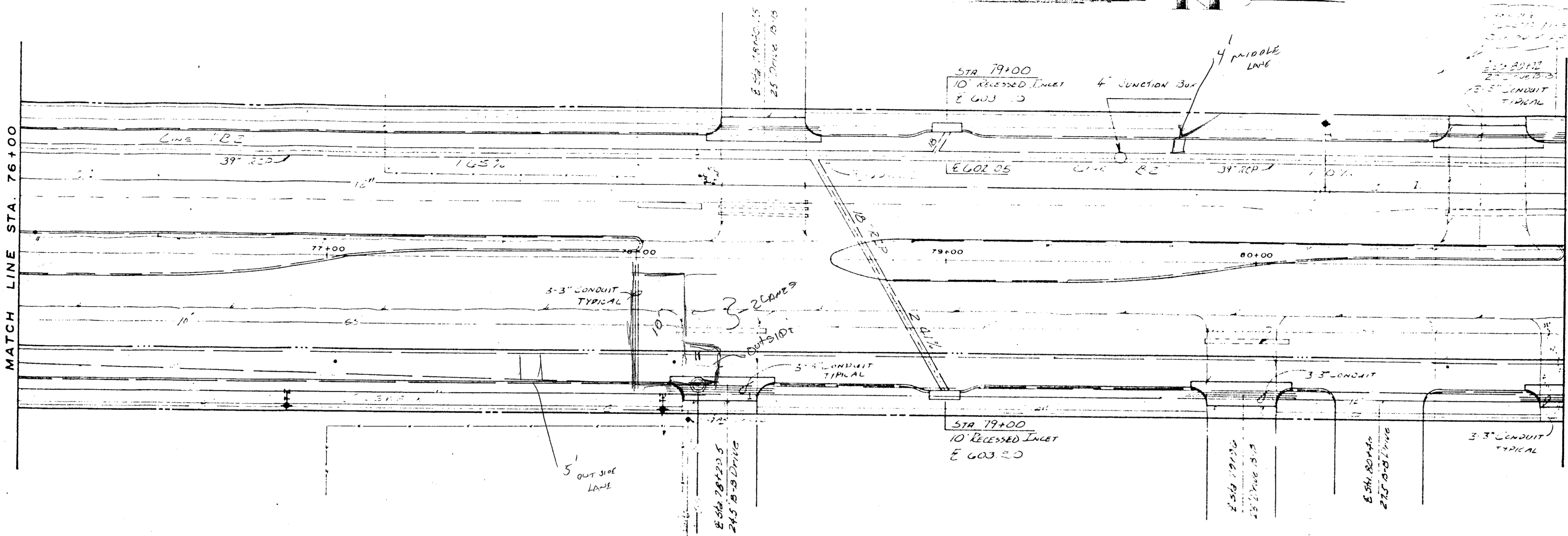
DRAWN BY D. D. APPROVED BY _____
DESIGNED BY J. P. DATE 3 - 78

PROJECT NO. _____ SCALE H. 1" = 20' V. 1" = 5' SHEET 7 OF 7

E 394 RD

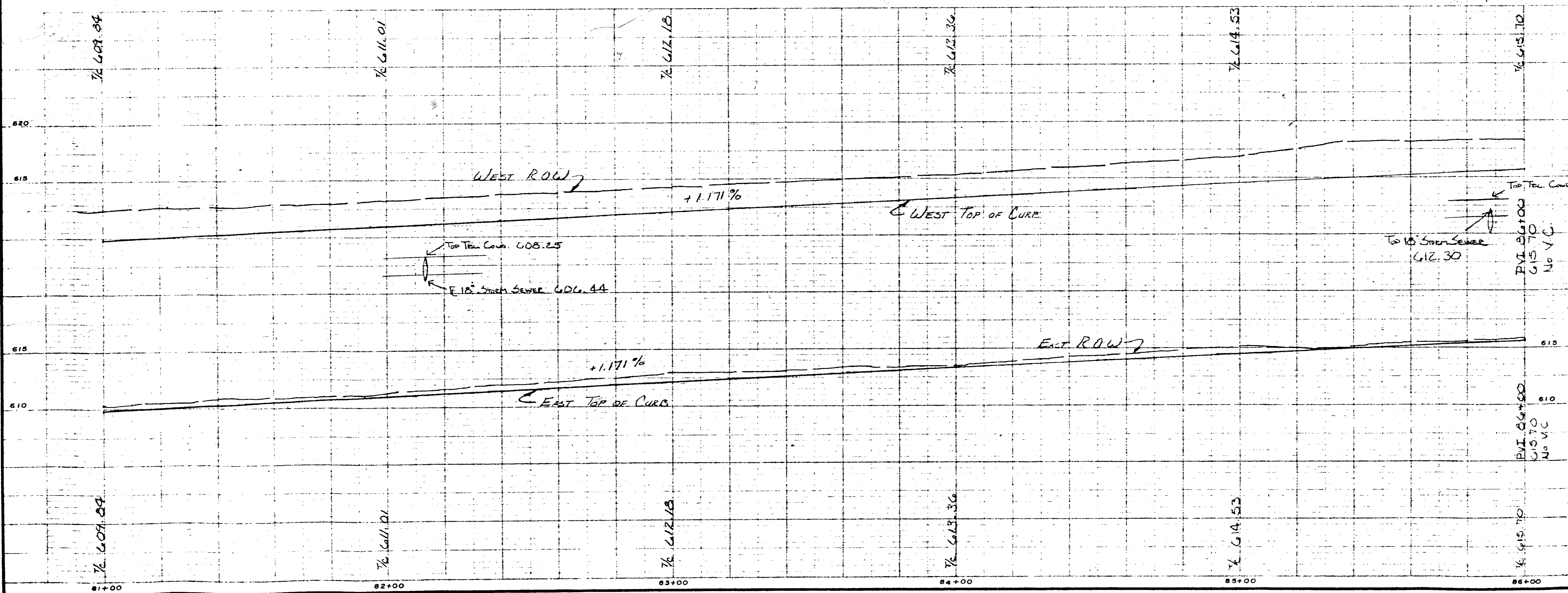
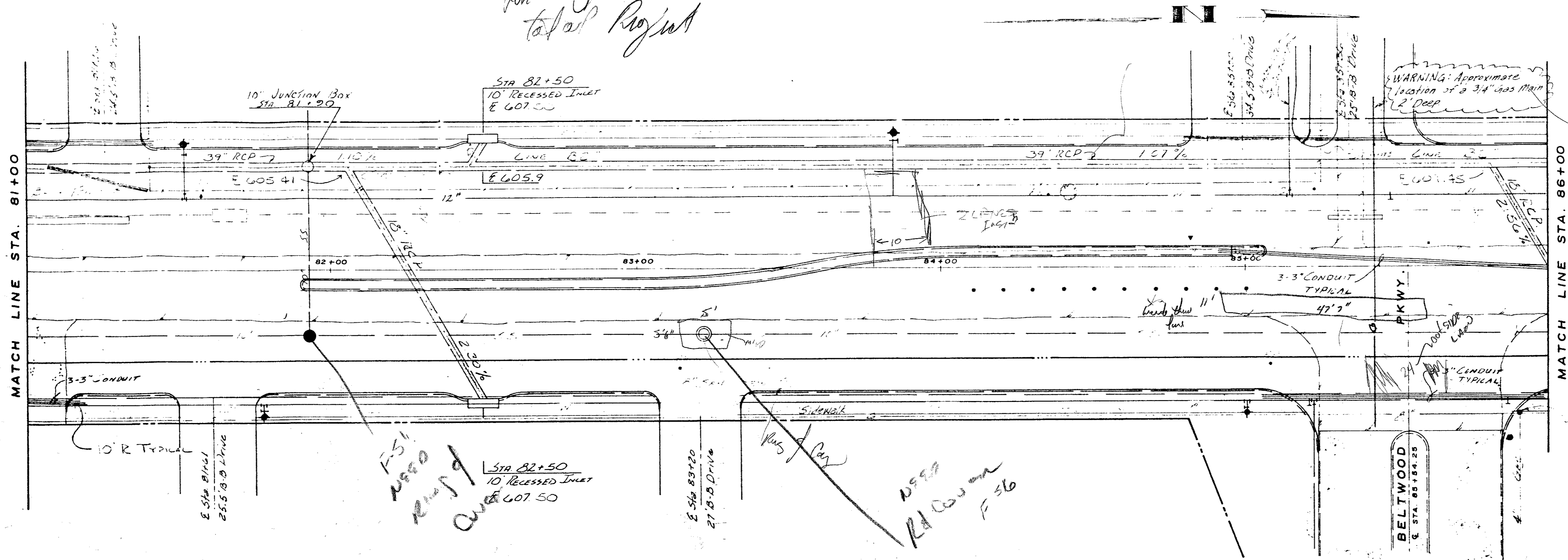
MATCH LINE STA. 76+00

MATCH LINE STA. 81+00



NO.	REVISION	BY	DATE
CITY OF FARMERS BRANCH, TEXAS PUBLIC WORKS DEPARTMENT ENGINEERING DIVISION			
MIDWAY ROAD PAVING SPRING VALLEY RD. TO BELT LINE RD.			
DRAWN BY	D. D.	APPROVED BY	
DESIGNED BY	J. P.	DATE	3-79
PROJECT NO.	SCALE: H. 1"=20' V. 1"=5'	SHEET	8 OF

Check
for Ref'd Curve
total Project



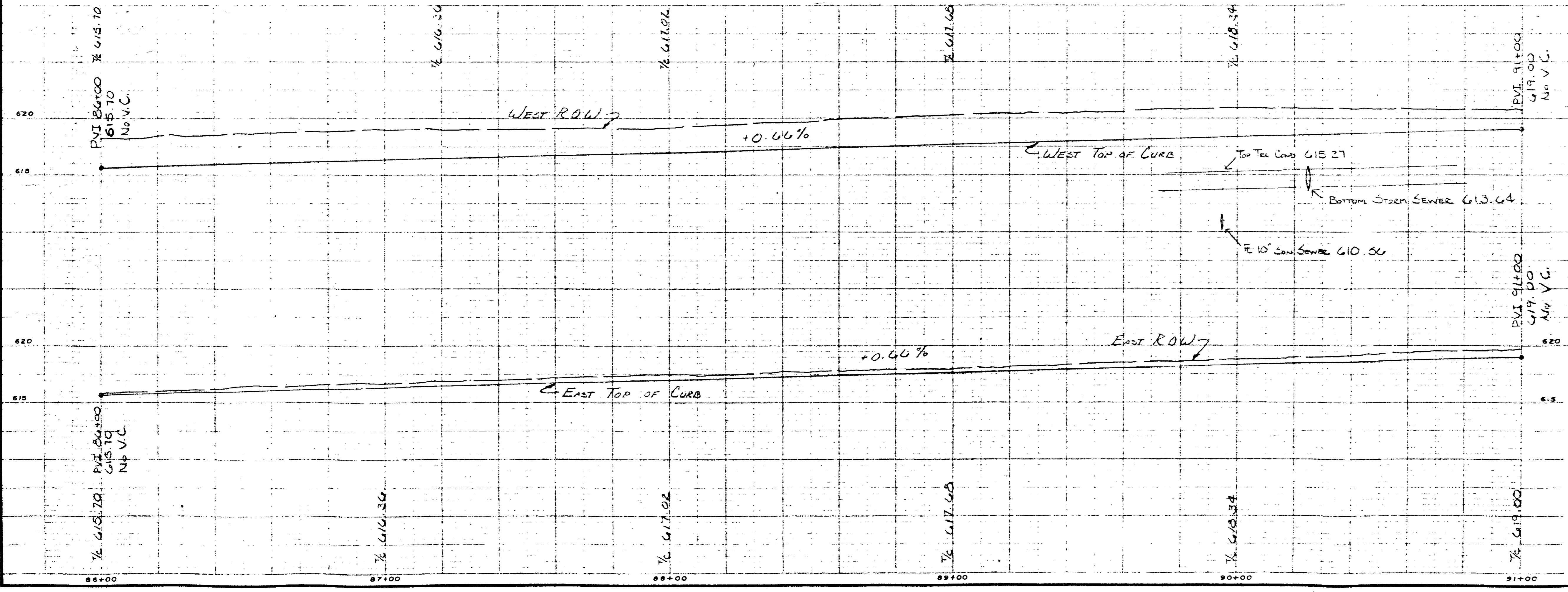
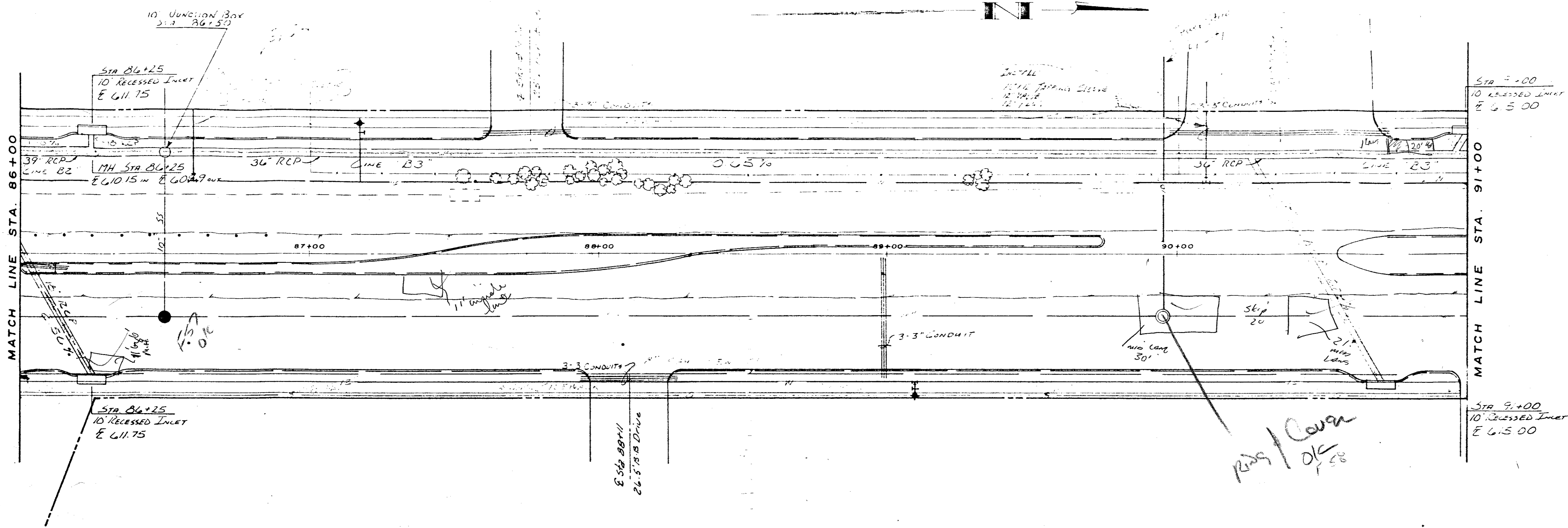
NO.	REVISION	BY	DATE

CITY OF FARMERS BRANCH, TEXAS
PUBLIC WORKS DEPARTMENT
ENGINEERING DIVISION

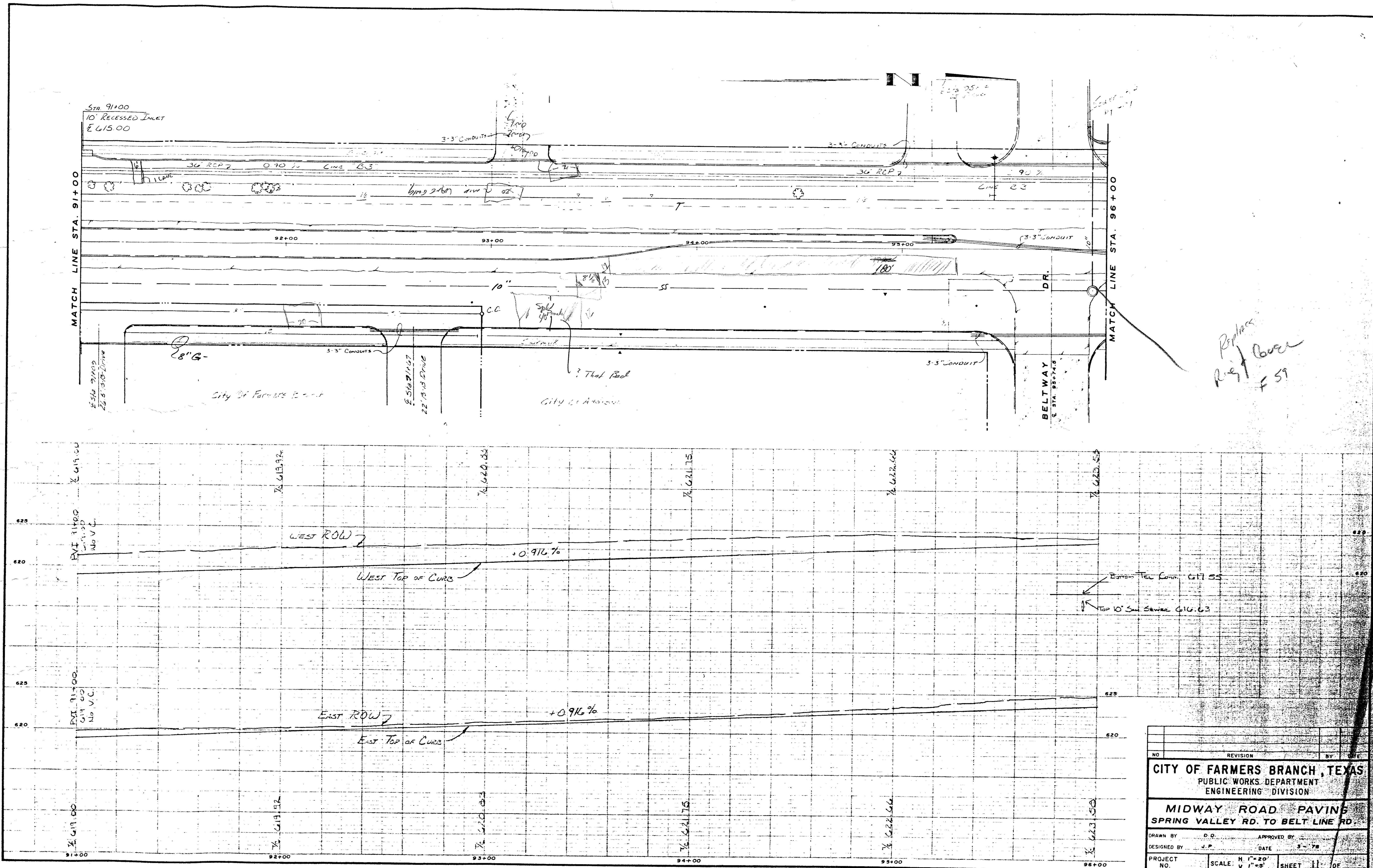
MIDWAY ROAD PAVING
SPRING VALLEY RD. TO BELT LINE RD.

DRAWN BY: O. D. APPROVED BY: _____
DESIGNED BY: J. P. DATE: 3-78

PROJECT NO. _____ SCALE: H. 1" = 20' SHEET 9 OF _____
V. 1" = 8'

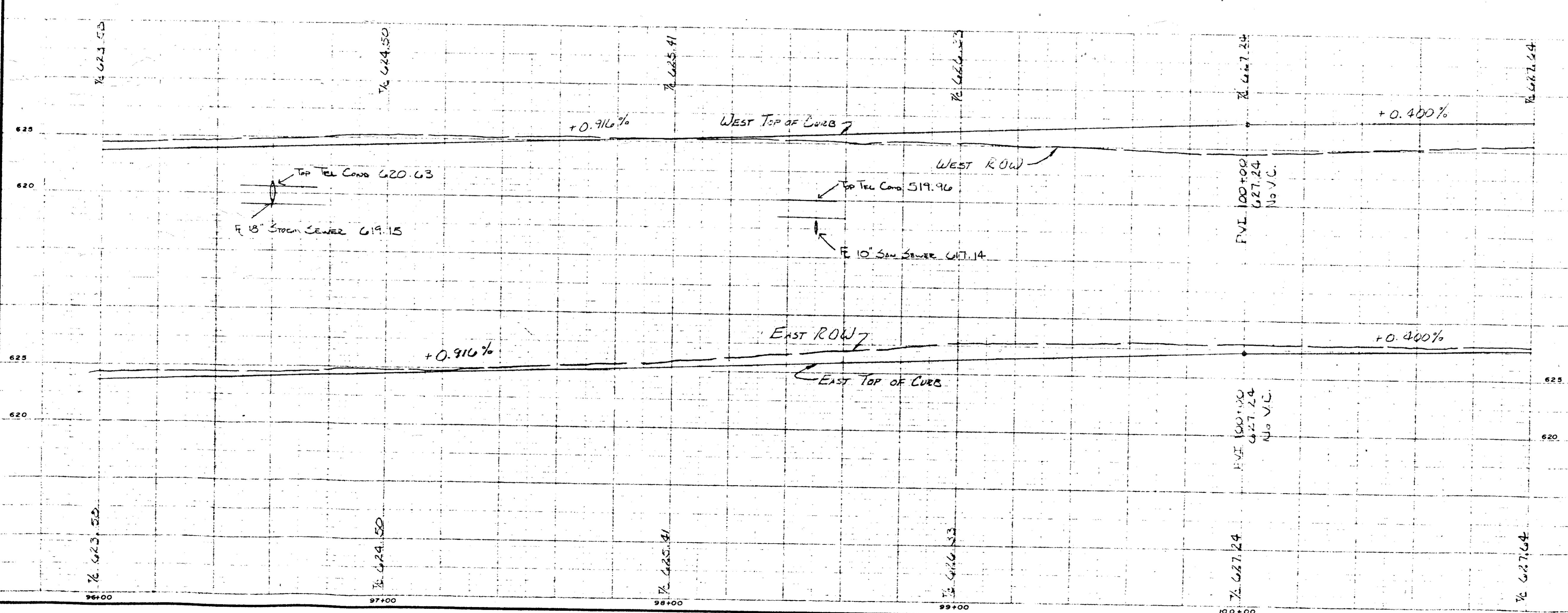
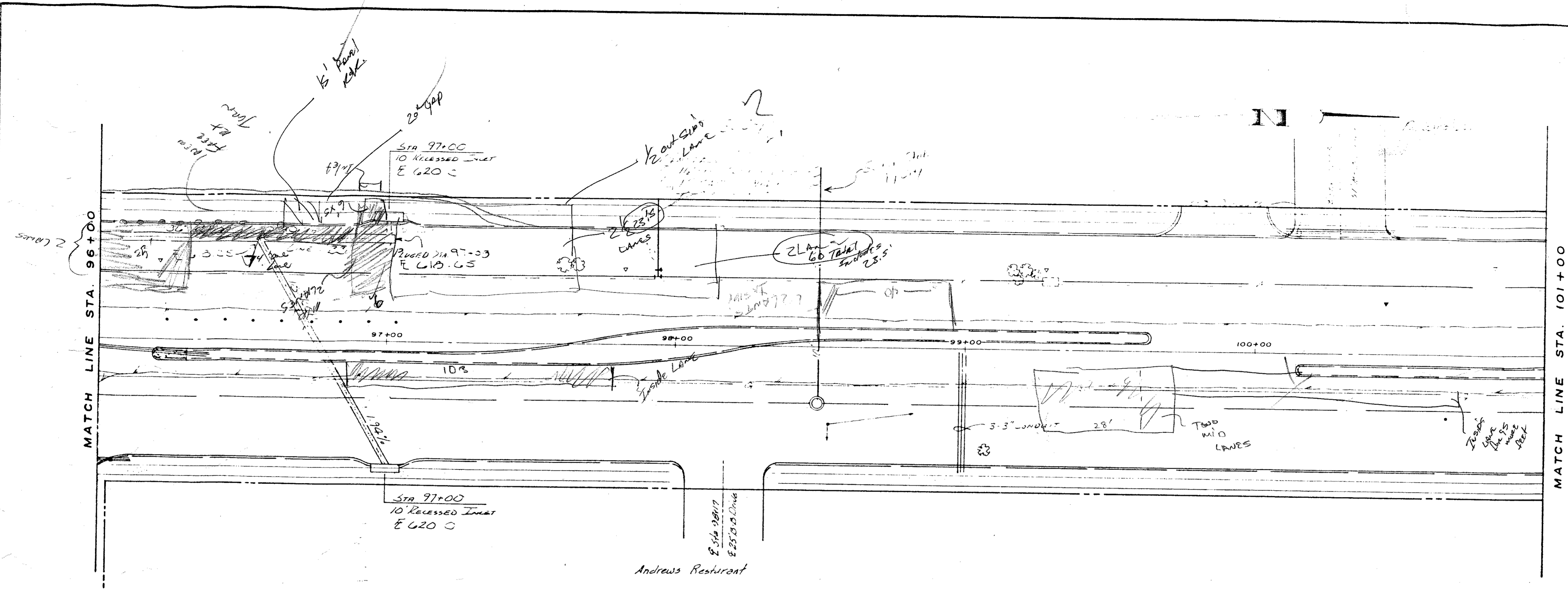


NO.	REVISION	BY	DATE
CITY OF FARMERS BRANCH, TEXAS PUBLIC WORKS DEPARTMENT ENGINEERING DIVISION			
MIDWAY ROAD PAVING SPRING VALLEY RD. TO BELT LINE RD.			
DRAWN BY D.D.		APPROVED BY	
DESIGNED BY J.P.		DATE 3-78	
PROJECT NO.	SCALE: H. 1"=20' V. 1"=8'	SHEET 10 of	



Replace
Right Cover
F 59

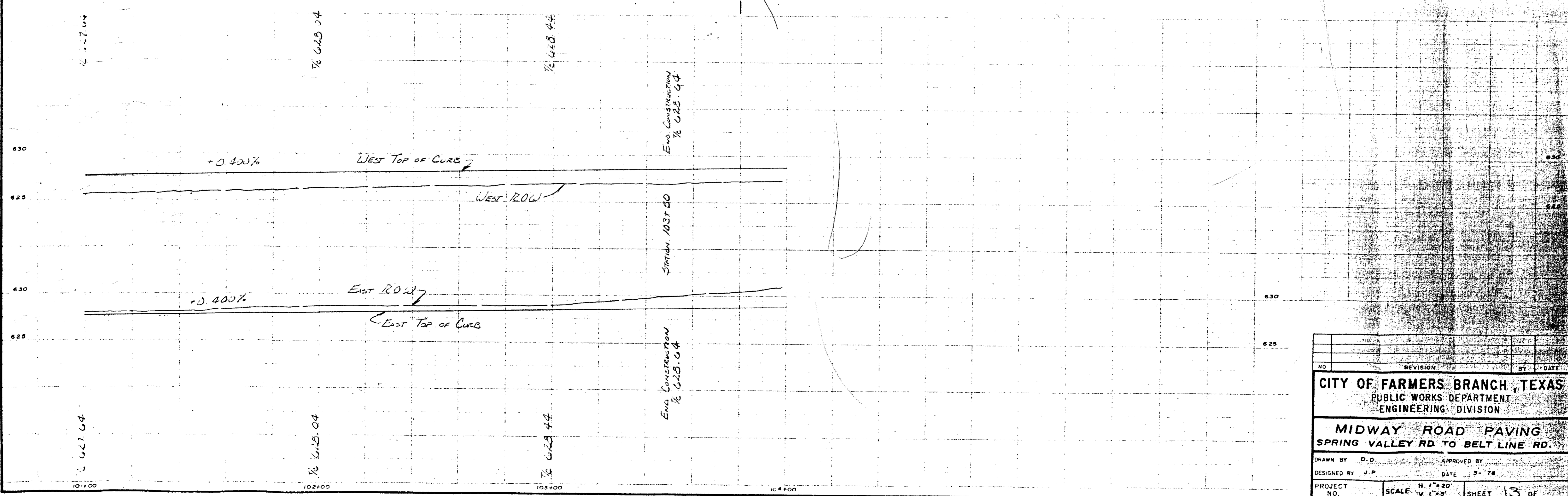
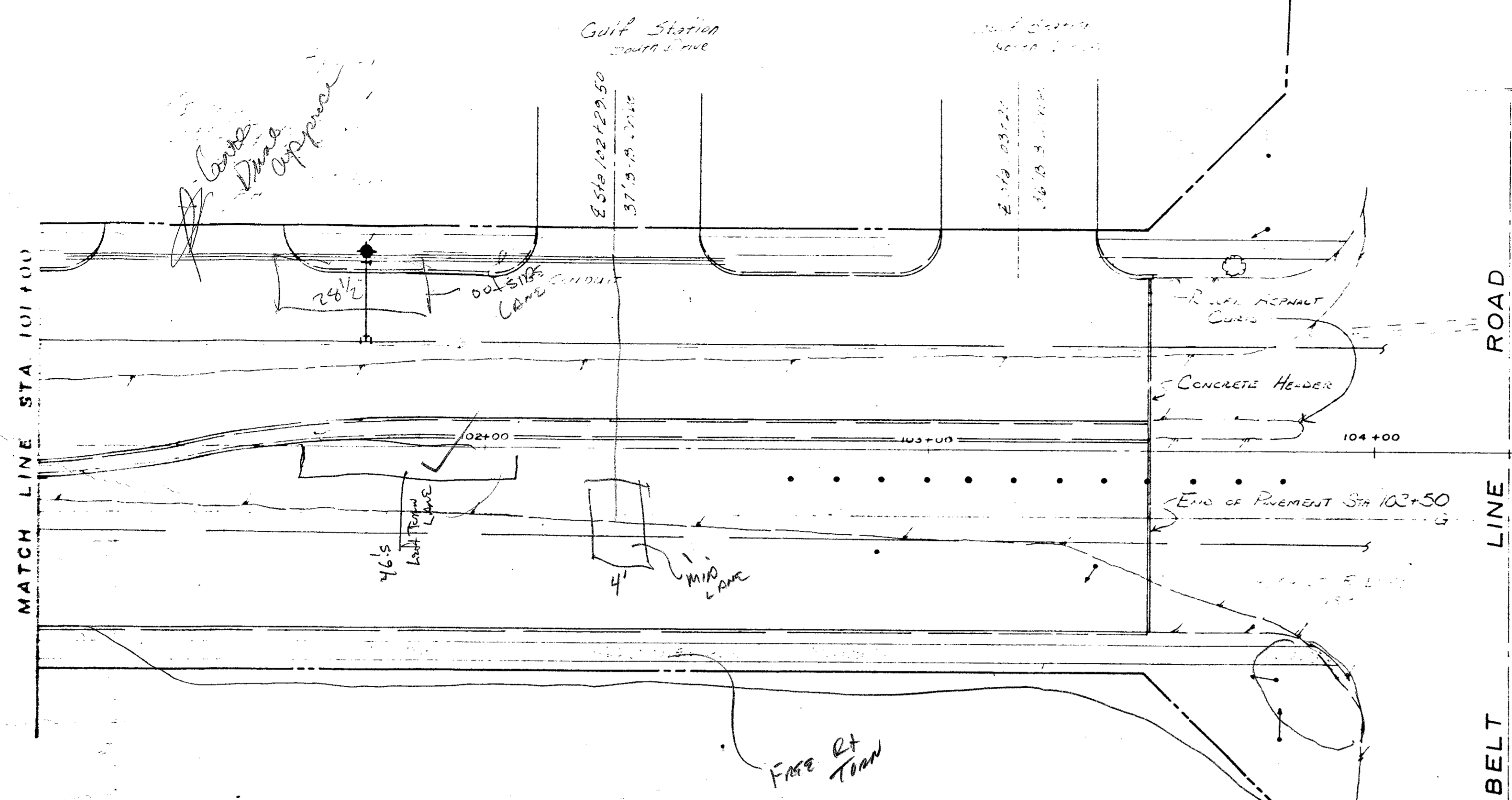
NO.	REVISION	BY	DATE
CITY OF FARMERS BRANCH, TEXAS PUBLIC WORKS DEPARTMENT ENGINEERING DIVISION			
MIDWAY ROAD PAVING SPRING VALLEY RD. TO BELT LINE RD.			
DRAWN BY	D.O.	APPROVED BY	
DESIGNED BY	J.P.	DATE	3-78
PROJECT NO.	SCALE: H. 1" = 20' V. 1" = 5'	SHEET	11 OF



NO.	REVISION	BY	DATE
CITY OF FARMERS BRANCH, TEXAS PUBLIC WORKS DEPARTMENT ENGINEERING DIVISION			
MIDWAY ROAD PAVING SPRING VALLEY RD. TO BELT LINE RD.			
DRAWN BY O. O.		APPROVED BY	
DESIGNED BY J. P.		DATE 3-78	
PROJECT NO.	SCALE H. 1" = 20' V. 1" = 5'	SHEET 12 OF	

E 584 DD

Blk-1



NO.	REVISION	BY	DATE
CITY OF FARMERS BRANCH, TEXAS PUBLIC WORKS DEPARTMENT ENGINEERING DIVISION			
MIDWAY ROAD PAVING SPRING VALLEY RD TO BELT LINE RD.			
DRAWN BY	D.D.	APPROVED BY	
DESIGNED BY	J.P.	DATE	3-78
PROJECT NO.	SCALE	H. 1" = 20' V. 1" = 5'	SHEET 13 OF