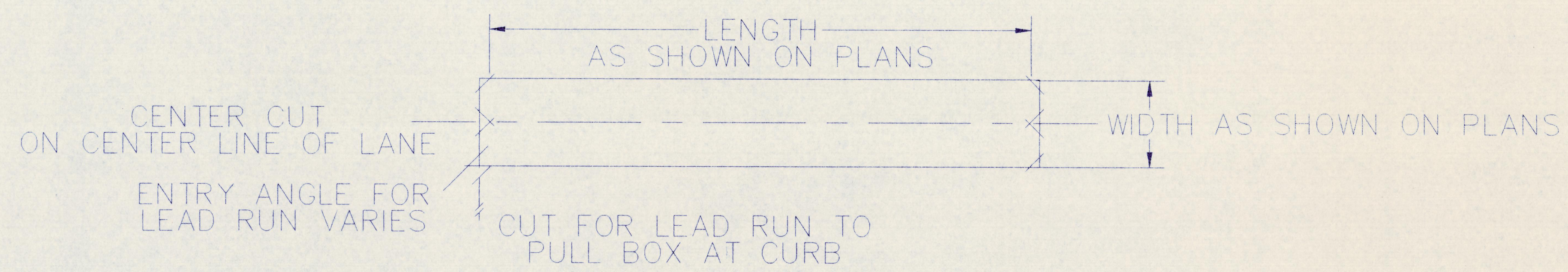
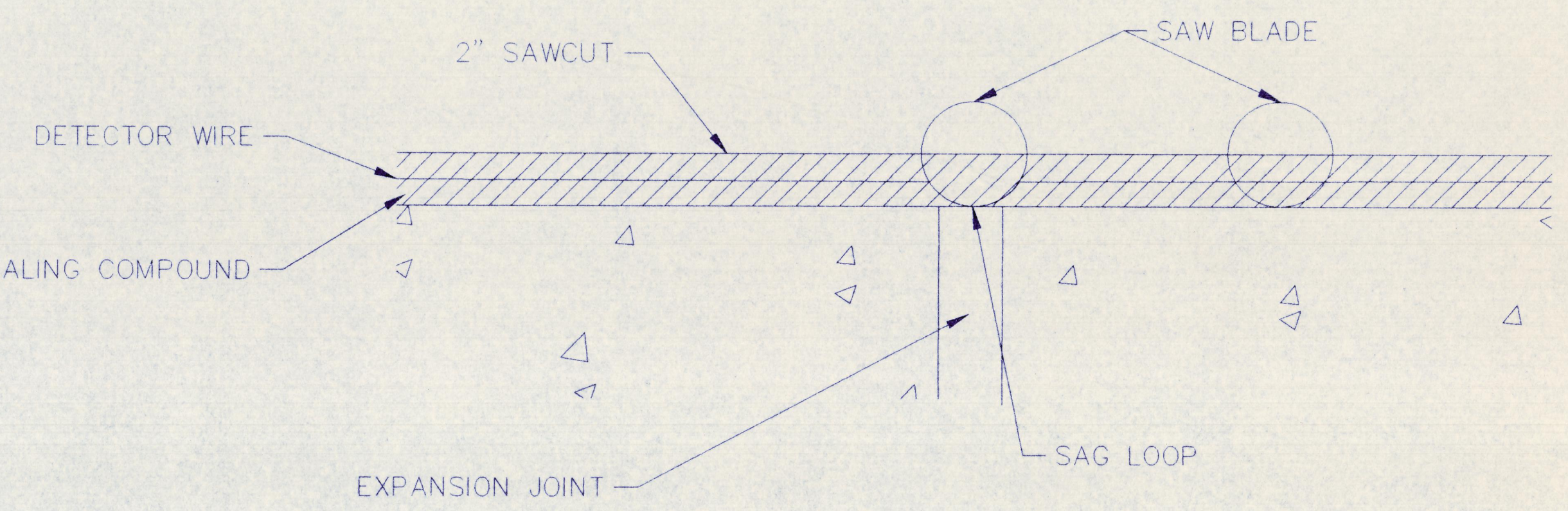


TYPICAL LOOP LAYOUT (1-2-1 QUADRIPOLE)



SAWCUT PATTERN FOR DETECTOR



TRAFFIC SIGNAL DETAILS

NOTES:

1. INSTALLATION OF WIRE LOOPS IS TO BE MADE IN THE SHORTEST TIME PRACTICAL.
2. THE PAVEMENT CUT IS TO BE CUT WITH A CONCRETE SAW TO NEXT LINES, AND THE LOOSE MATERIAL REMOVE. THE CUT SHOULD BE CLEAN AND DRY WHEN THE SEALING COMPOUND IS PLACED.
3. THE LEAD IN WIRES ARE TO BE TWISTED A MINIMUM OF TWO TURNS PER FOOT AND REMAIN UNDISTURBED AFTER THE LOOP IS TUNED.
4. EACH LOOP IS TO BE RETURNED TO CONTROLLER VIA ON PAIR OF UNSPLICED APPROVED SEALING COMPOUND SHIELDED LEAD IN WIRES. MULTIPLE, TWISTED LEADS TO MORE THAN ONE LOOP IN SINGLE LEAD RUN SAW SLOT ARE NOT PERMISSABLE.
5. WHEN WAS CUT CROSSES A TRANSVERSE EXPANSION JOINT LOWER THE DEPTH 2" WHEN SAW IS CENTERED OVER EXPANSION JOINT.
6. CONTRACTOR TO PROVIDE INDIVIDUAL SAWED CHANNELS THRU CURB & GUTTER FOR EACH WIRE LOOP.
7. SPLICES IN PULL BOXES SHALL BE SOLDERED & WEATHER SEALED.

PUBLIC WORKS DEPARTMENT BOX 114 ADDISON, TEXAS 75001 (214) 450-2840 FAX (214) 931-6643		TOWN OF ADDISON PUBLIC WORKS DEPARTMENT	PREPARED FOR:
		SCOTT CONSULTING 6220 BENTWOOD TRAIL SUITE 403 DALLAS, TEXAS 75252	PREPARED BY:
MIDWAY ROAD PAVEMENT MARKING PROJECT TRAFFIC SIGNAL DETAILS		Scale: NTS Date: 7/94 Designed By: T of Addison Drawn By: Checked By: T of Addison File: SIG-DET.DWG Project No.: MIDWAY ROAD	SHEET 01 OF 2

B30-1

Midway Rd. Details (Marking, Pavement, Signal)

B30-1